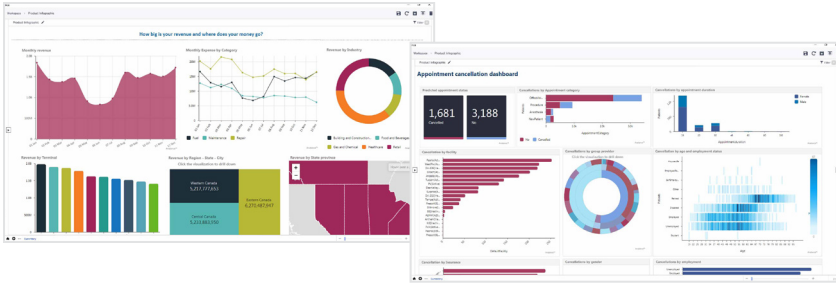


# ANALANCE BUSINESS INTELLIGENCE

**Analance Business Intelligence (ABI)** is one of the modules in the Analance Platform with an intuitive UI that allows every user (administrator, designer, or business user) to quickly and seamlessly access data and business insights. ABI is a powerful self-serve platform and collaboration tool that is easy to deploy and maintain with maximum personalization for all user groups, privacy controls, and customized BI reporting.



INFOSHEET



## ABI KEY BENEFITS

### Self-serve data discovery and interactive dashboards on the fly

Empower the team to take control of data and analytics to find answers to those critical ad-hoc, one-off questions. Make faster decisions with highly enriched interactive reports that can be further drilled into for key insights and business trends. Access data and automate report generation without the need for IT support.

### Enterprise data and intelligence accessible from a single platform

Dedicated public and private workspaces hold interactive workbooks, fully customizable, to keep projects organized. Create one or multiple sheets within each workbook to visualize something unique about the data to better understand and determine the connection in your data.

### Less time preparing data and more on analysis

Jump right into your data analysis and bring dashboards to life with intuitive and expressive visualizations like simple charts, advanced charts, stacked charts, tabular data, matrix, combinational chart, and card. See data in beautiful visuals and colors as you drag and drop values into the axis.

### Seamlessly deploy predictive models from the same platform

No need to integrate with third-party applications to visualize predictive outcomes. The advanced analytics module seamlessly integrates with the business intelligence module, allowing users to deploy predictive models into production without any interruption in the workflow.

### Ease data access, discovery, and governance

Analance allows seamless data integration and data preparation. Users can access and prepare their data for analysis on the fly from a single platform – ensuring data authenticity.

## TELL A BETTER STORY WITH ANALANCE

The single most crucial step in business data science projects is data storytelling. A good story can mean the difference between your analytics insights collecting dust and your company using these same insights to reap huge cost, service, and performance improvements.

- Easier decision making and actionable insights for your management team
- Faster, proactive response to service and performance issues
- Improved visibility for everyone, including business users, data scientists, and analysts
- Fewer gut or snap decisions that could damage your business
- Focused stories that impact the right people with the right information
- Legitimization of, and increased engagement in, data science and analytics projects

## WHO USES ANALANCE?

Analance is being used by small, medium and very large renowned enterprises in Telecommunications, Financial Services, Healthcare, Pharmaceutical and Life Sciences, Retail and Education.

### Explore Analance use cases

<https://analance.ducenit.com/solutions>

### Proof of concept

<https://analance.ducenit.com/proof-of-concept/>

### Demo

<https://analance.ducenit.com/get-a-demo>

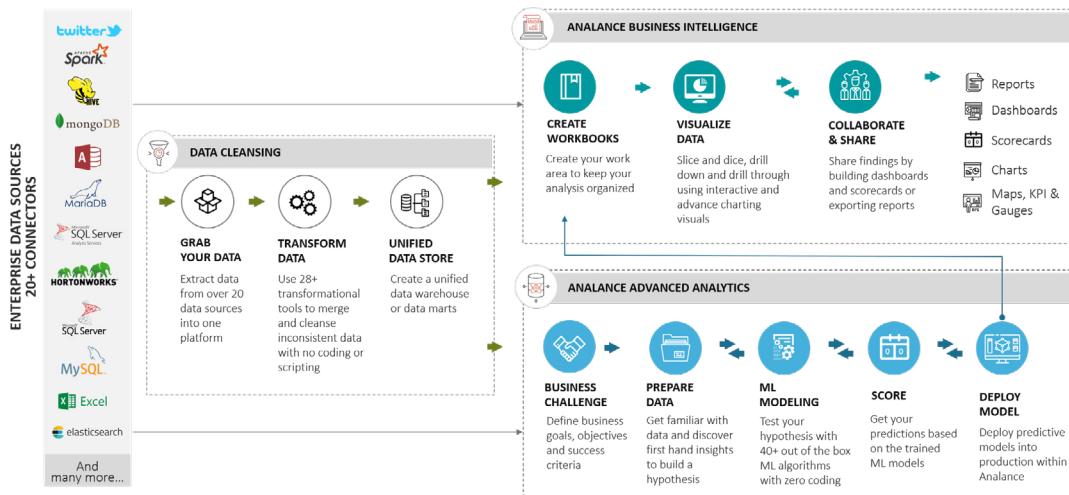
### Free trial

<https://analance.ducenit.com/free-cloud-trial>

For more information please visit [www.analance.com](http://www.analance.com)



## HOW DOES ANALANCE WORK?



ABI is one of the modules in the Analance Platform that seamlessly connects to other Analance modules without any integration challenges or breaks in process flows. Data cleansing, predictive modelling, and business intelligence – all from a single, easy-to-use enterprise analytics platform. Everything from system administration and maintenance to workload performance and training is much easier, leading to a much lower TCO for the solution.

## ABI FEATURES

### 20+ DATA CONNECTORS

- Big Data Sources (Hadoop, Hive)
- API (REST, Odata)
- RDBMS and Files
- Cubes
- Social Media

### BRING DASHBOARDS TO LIFE WITH 40+ VISUALS

- Basic Charts
- Advanced Charts
- Tabular Data
- Matrix
- Stacked Charts
- Maps
- Combinational Chart
- Card

### DEPLOYMENT OPTIONS

- Cloud** No hardware investments required! Easily scale resources horizontally or vertically to meet organizational needs.
- On-Premise** Maintain control over enterprise data and adhere to in-house security policies to protect confidential data.
- Hybrid** Combine on premise, public, and private cloud options. Control how data is accessed.

### PLATFORM SYSTEM REQUIREMENTS

- Operating System** Windows Server 2016 R2 Standard 64-bit Edition
- Processor** Intel x64 Based Architectures 2.6 GHz Six Core Processor or higher
- Disk Space** 100 GB minimum; 150 GB or higher recommended

### SYSTEM REQUIREMENTS

- Windows** Internet Explorer 11, Mozilla Firefox\*, Google Chrome\*, Opera\* *\*Latest and -1 version*
- Processor** Intel Core Duo compatible or higher recommended
- Memory** 2GB minimum; 4 GB recommended

## ABOUT DUCEN

Ducen is a trusted technology solutions provider that aims to empower Fortune 1000 companies through quality solutions and services. We work with organizations across various verticals to drive business outcomes and enhance their customer experience. Through our enterprise analytics platform, we build and manage data-driven digital platforms including business intelligence and advanced analytics solutions. We also offer a comprehensive services portfolio covering data management, cybersecurity, and application development to help clients stay ahead of the technology curve.

For more information please visit [www.analance.com](http://www.analance.com)

**DUCEN**  
A Sryas Company