

LADDER STANCHION SYSTEM

6514/6515



The **OPTIMUM** solution for fixed ladder safety

www.relsafe.com



Can you climb a ladder? Sure you can; but year in year out fatalities from both fixed and portable ladders claim the lives of workers who answer this very question with a simple, "YES!" By looking at historical trends, ladder falls are routinely the 2nd leading cause of fatalities in industry. When the results don't end in a fatality, they are more often serious disabling type injuries.

As of November 2016, OSHA has turned their focus to this known hazard by providing new regulations for fall protection ladder safety. Ladder cages are a solution of the past, and the requirement for fixed ladder safety systems is the new normal. This new normal will mean big changes over the next 20 years for industry facilities, worker safety, and the training required ensuring this standard is a success.

Since 2010 Reliance has advocated these changes be met with sensible ready-made solutions. The first launch of the Vertical Ladder Stanchion (Part # 6512) proved successful for contractors in plant facilities by creating an overhead anchorage used with our high performing Self-Retracting Lanyards. The new and improved Vertical Ladder Stanchion (Part # 6514/6515) features greater adjustability, and taller anchor heights that keep your Self-Retracting Lanyard overhead even with step-thru style ladders. This makes the Vertical Ladder Stanchion System the optimum solution for fixed ladder safety moving forward.

1910.28(b)(9)(i)

For fixed ladders that extend more than 24 feet (7.3 m) above a lower level, the employer must ensure:

1910.28(b)(9)(i)(A)

Existing fixed ladders. Each fixed ladder installed before November 19, 2018 is equipped with a personal fall arrest system, ladder safety system, cage, or well;

1910.28(b)(9)(i)(B)

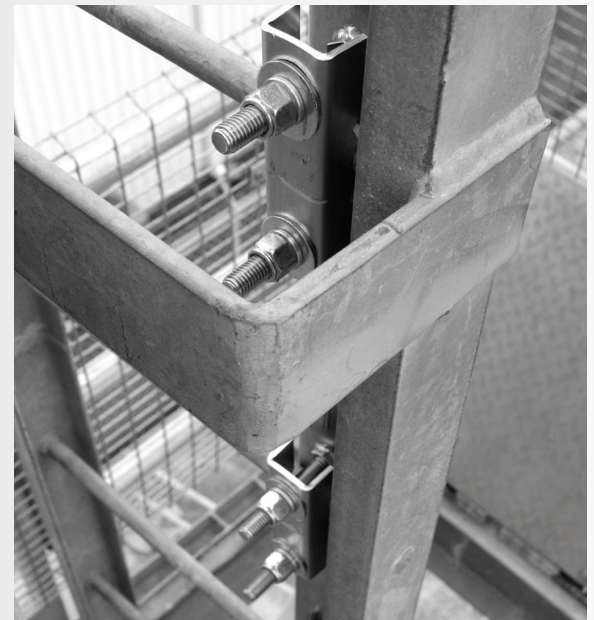
New fixed ladders. Each fixed ladder installed on and after November 19, 2018, is equipped with a personal fall arrest system or a ladder safety system;

1910.28(b)(9)(i)(C)

Replacement. When a fixed ladder, cage, or well, or any portion of a section thereof, is replaced, a personal fall arrest system or ladder safety system is installed in at least that section of the fixed ladder, cage, or well where the replacement is located; and

1910.28(b)(9)(i)(D)

Final deadline. On and after November 18, 2036, all fixed ladders are equipped with a personal fall arrest system or a ladder safety system.



ADVANTAGES

Vertical Ladder Stanchion System

- Overhead anchorages coupled with the Reliance Skyloc II SRL means arrest distances less than 24"
- Inspection procedures kept simple
- Standard dorsal D-ring harness will work
- System user training is much easier than other complex ladder safety systems
- Kits available in 30', 50', and 100' lengths
- Use your existing fleet of Self-Retracting Lanyards or convert to the high performing Skyloc II

Our opinion : Keep it simple. The use of Self-Retracting Lanyards is much more of an industry standard of practice than the alternative options available for fixed ladder safety. The Vertical Ladder Stanchion is the most sensible solution for your facilities, and the workers exposed to fall hazards on your ladders.

Many fall protection manufacturers recommend the use of expensive and complex fixed cable or rail systems for ladder safety. Though these solutions have been widely adopted in longer ascent and descent applications, they are much more difficult to use, and present additional challenges for users. Start by replacing all your harnesses which will require a sternal d-ring to connect to the system. This added expense alone makes the use of these types of systems infeasible. Couple that with the added cost of providing multiple cable grabs can send your budget out of control.

Step-thru style ladders become even more of a hazard while exposing the worker at the most dangerous section of the ladder, the top. Entering and exiting the system atop the step-thru style ladder leaves the worker vulnerable to the same old fall hazard we are trying to mitigate. Let's leave these type of systems in the hands of highly trained tower climbers and not introduce this hazardous scenario to everyday ladder climbing.

DISADVANTAGES Traditional Fixed/Engineered Vertical Climbing System

- Requires a harness with sternal d-ring
- Multiple users of a ladder either require their own cable grab, or waste time sending the unit back down, reducing worker productivity and efficiency
- Most manufacturers require trained installers of the systems which is often a third party installation cost
- Step-Thru style ladders create a fall hazard when connecting or disconnecting atop the ladder
- Longer deceleration distances (up to 39") allowed for these type of systems during a fall arrest is way too far
- Extensive user training to ensure proper installation, inspection, use, and misuse
- Expensive annual inspections most often performed by the third party installer
- These systems tend to be highly mis-used & the cost of resulting injuries can be severe



SYSTEM COMPONENTS

ACCESSORIES

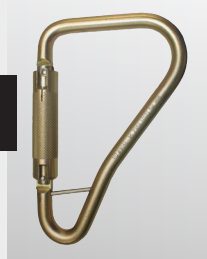


6515-1
Ladder Stanchion Davit



Skyloc II
Self Retracting Lifeline

Carabiner
2" Gate Opening



6514-1
Ladder Davit Receptacle

Tag Line
Neon Orange Nylon



80000AC
Ironman Lite Harness



880041
D-Ring Extender

Vertical Stanchion System & Components

Part Number	Description
6514-1	Receptacle Ladder Davit Adjustable
6515-1	Vertical Ladder Stanchion Davit
6520-1	Vertical Ladder Stanchion and Receiver System (Includes 6514-1 and 6515-1)
6520-30	Vertical Ladder Stanchion System, 30' Includes: Ladder Stanchion, Stanchion Receiver, Skyloc II 30', Large Carabiner, and 30' Tag Line
6520-50	Vertical Ladder Stanchion System, 50' Includes: Ladder Stanchion, Stanchion Receiver, Skyloc II 50', Large Carabiner, and 50' Tag Line
6520-100	Vertical Ladder Stanchion System, 100' Includes: Ladder Stanchion, Stanchion Receiver, Skyloc II 100', Large Carabiner, and 100' Tag Line