

Continuum RMM *Network Care*

A Fully-Managed Extension of Continuum RMM

The Continuum-Auvik integration provides MSPs with a complete network management solution, combining Auvik's powerful software with support from Continuum's Network Operations Center (NOC). With Continuum's technicians providing 24x7 monitoring, proactive troubleshooting and issue remediation, you're able to profitably manage client networks without the need to hire expensive network engineers or other internal resources.

Support Entire Networks, Not Just Endpoints

Network infrastructure management enables MSPs to capture a greater view of the environments they're supporting, while extending support capabilities beyond traditional endpoint management to support routers, switches, firewalls, Wi-Fi controllers and more. Auvik greatly simplifies network management by providing a powerful software solution with a simplified user interface, real-time network mapping capabilities and other features designed to help MSPs profitably deliver network services to clients.

Scale with a Fully-Managed Solution

When you deploy Auvik through Continuum, our NOC will remediate nearly all critical and actionable alerts—representing up to 65% of all network alert traffic—and will filter remaining alerts so you'll only be notified when an action is actually needed. You'll have far fewer alerts to deal with, and you won't have to hire specialists or network engineers to manage the tool.

Centralize Monitoring and Management of Networks and Endpoints

The Continuum-Auvik integration allows you to manage alerts and tickets for all endpoints and networks from one portal, and single-source billing from Continuum simplifies the payment process and helps save you valuable time.

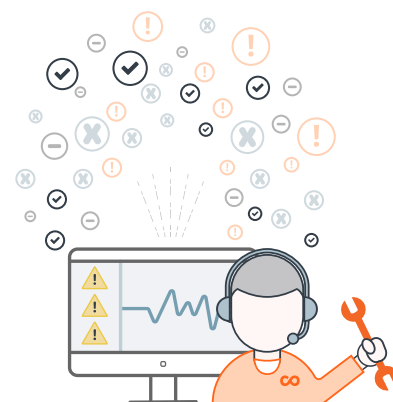
Maximize Margins with On-Demand Network Experts and a Pay-As-You-Grow Model

With Continuum's NOC technicians available 24x7, you're able to leverage our expertise as needed while keeping your labor costs to a minimum. You'll only ever pay for devices that are active on your clients' networks, and there's no need to prepay or purchase anything upfront—and you'll also receive discounts for volume pricing as you continue to grow your business.

Continuum is excited to partner with a leading software provider in Auvik to deliver this powerful combination of network monitoring, management and remediation to our MSP partners.

Ready to learn more?

Get in touch with us today, or reach out to your Partner Development Manager if you're already a Continuum partner!



Continuum RMM *Network Care*

Features Overview

NETWORK TOPOLOGY

AUTOMATED NETWORK MAPPING

In minutes, see a complete map of your physical and logical topologies.

AUTOMATED INVENTORY

Have a profile for every device on your network at your fingertips.

IP ADDRESS MANAGEMENT

Get an automatic list of all the IP addresses you're currently using and which devices are using them.

NETWORK DOCUMENTATION

Instantly know how everything on your network is connected.

MAP EXPORT

Print any map view to PDF for easy sharing or storage.

MAP SEARCH & FILTER

Quickly find and visually isolate any part of your network.

NETWORK MONITORING

ALERTS & NOTIFICATIONS

Stay on top of important events on your network with both preconfigured and customizable alerting.

SERVICE MONITORING

Inventory and monitor the services running on nearly any device on your network.

LIVE & HISTORIC DATA

View network performance as it happens with 60-second polling or dive into detailed logs.

CONTEXT-AWARE DATA

Get relevant and actionable information tailored to each device type.

RICH STATISTICS

Understand and improve the stability of your network with usage and health stats.

NETFLOW DATA & ANALYTICS

Gain real-time visibility into network traffic. Powered by Kentik.

REMOTE MANAGEMENT

IN-APP TERMINAL

Securely access any Telnet or SSH-enabled device on your network — from anywhere.

PASSWORD MANAGEMENT

Never again forget device credentials or leave them vulnerable.

USER & CREDENTIAL MANAGEMENT

REMOTE BROWSER

Log into any device's web interface directly from your Auvik dashboard.

TWO-FACTOR AUTHENTICATION

Add an extra layer of security to your Auvik account.

TROUBLESHOOTING

CONTEXT-AWARE DATA

All the technical debugging data you need, pooled in one easy-to-access location.

NETWORK EVIDENCE

Instantly know where a device has been seen across your network.

CONFIGURATION MANAGEMENT

Know exactly how your devices are configured and when they change. Never miss a backup.

LIVE & HISTORIC DATA

Instantly bring back any configuration from your version history.

NETFLOW DATA & ANALYTICS

Get suggestions for improving the performance and stability of your network.

CONTINUUM'S NOC SUPPORT

The NOC will notify you of issues, perform remote troubleshooting, and restart devices when needed. Auvik tickets will be integrated into the Continuum portal. Continuum's NOC will remediate almost all critical alerts (~65% of all network alerts) and filter the remaining alerts so you see only the ones that require action by you. 7 Critical Alerts will be managed by the NOC.

1. High Broadcast Traffic
2. High memory utilization
3. High CPU utilization
4. High interface utilization
5. Packet discard(s)
6. Packet error(s)
7. Configuration backup

The remaining alerts tend to fall into 2 categories. They are either low priority alerts that are more informational and possibly suppressed (e.g. printer related alerts), or they require on-site presence to be able to resolve (e.g. a device has gone offline).