

UNITECH DURA-READER OVERVIEW

Dura Reader **Model DRG3227-612UC** is a USB connected device that emulates a com port when the appropriate driver is installed. The reader uses the FTDI chipset to create the virtual com port.

The latest FTDI Virtual Com Port (VCP) driver for Windows can be downloaded from the FTDI website <http://www.ftdichip.com/Drivers/VCP.htm>

The driver can be downloaded as exe file from the link highlighted below
Download the driver to a suitable and save it to a suitable location before continuing

Drivers

- VCP Drivers**
- D2XX Drivers
- D3XX Drivers
- Firmware
- Support
- Android
- EVE
- MCU
- Sales Network
- Web Shop
- Newsletter
- Corporate
- Contact Us

Chip **FTDI** NOW ON **INDIEGOGO**

Virtual COM Port Drivers

This page contains the VCP drivers currently available for FTDI devices.

For D2XX Direct drivers, please click [here](#).

Installation guides are available from the [Installation Guides](#) page of the Documents section of this site for selected operating systems.

VCP Drivers

Virtual COM port (VCP) drivers cause the USB device to appear as an additional COM port available to the PC. Application software can access the USB device in the same way as it would access a standard COM port.

This software is provided by Future Technology Devices International Limited "as is" and any express or implied warranties, including, but not limited to, the implied warranties of merchantability and fitness for a particular purpose are disclaimed. In no event shall future technology devices international limited be liable for any direct, indirect, incidental, special, exemplary, or consequential damages (including, but not limited to, procurement of substitute goods or services; loss of use, data, or profits; or business interruption) however caused and on any theory of liability, whether in contract, strict liability, or tort (including negligence or otherwise) arising in any way out of the use of this software, even if advised of the possibility of such damage.

FTDI drivers may be used only in conjunction with products based on FTDI parts.

FTDI drivers may be distributed in any form as long as license information is not modified.

If a custom vendor ID and/or product ID or description string are used, it is the responsibility of the product manufacturer to maintain any changes and subsequent WHCK re-certification as a result of making these changes.

For more detail on FTDI Chip Driver licence terms, please [click here](#).

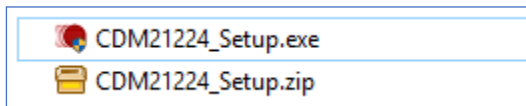
Currently Supported VCP Drivers:

Operating System	Release Date	Processor Architecture							Comments
		x86 (32-bit)	x64 (64-bit)	PPC	ARM	MIPSII	MIPSIV	SH4	
Windows*	2016-03-16	2.12.16	2.12.16	-	-	-	-	-	WHQL Certified. Includes VCP and D2XX. Available as a setup executable. <small>Please read the Release Notes and Installation Guides.</small>

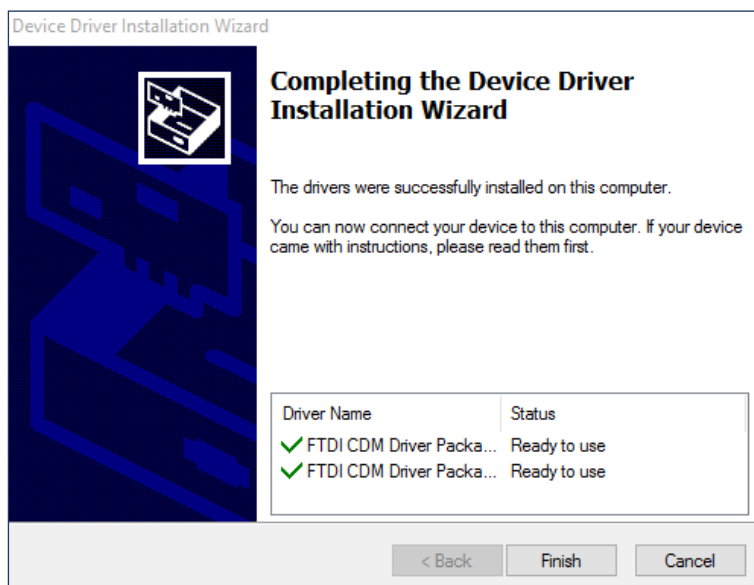
INSTALLING THE FTDI DRIVER

Before you start **DISCONNECT THE READER FROM THE PC**

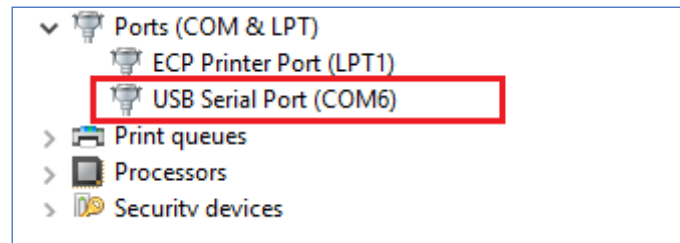
1. Download the FTDI driver installer package to a known location
2. Un-zip the driver package if needed
3. Run the downloaded exe file as an Administrator



4. Follow the simple onscreen instructions until the driver installation is complete



5. Open Windows Device Manager and view the current available Com Ports for reference
6. Plug the reader in to an available USB port and monitor activity in Device Manager.
The driver will install automatically and create new com port in Device Manager



7. The installation of the reader's driver is now complete.
The reader is now available to the operating system and therefore can be configured in Gladstone360 or Plus2 as needed.