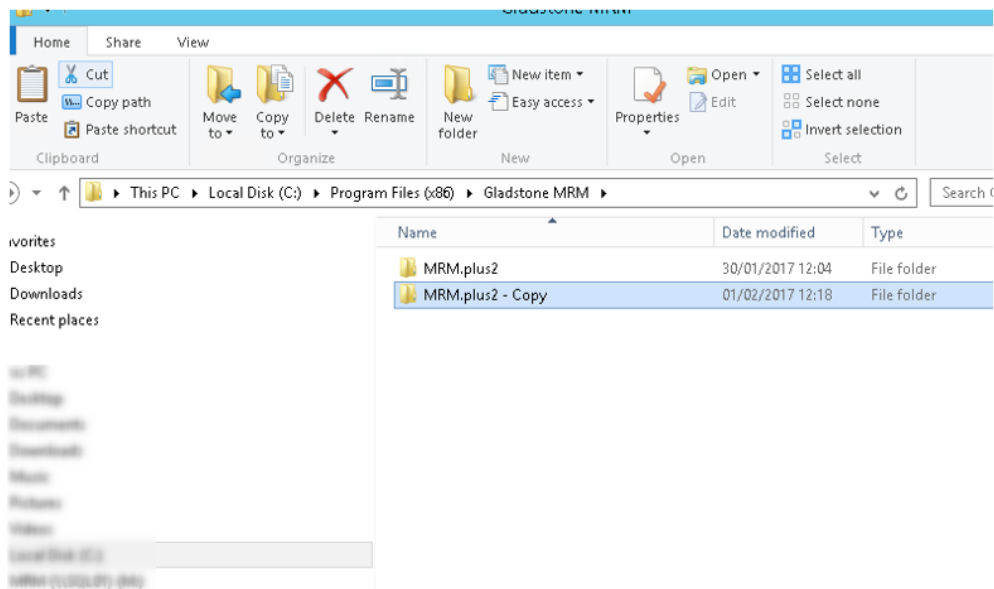




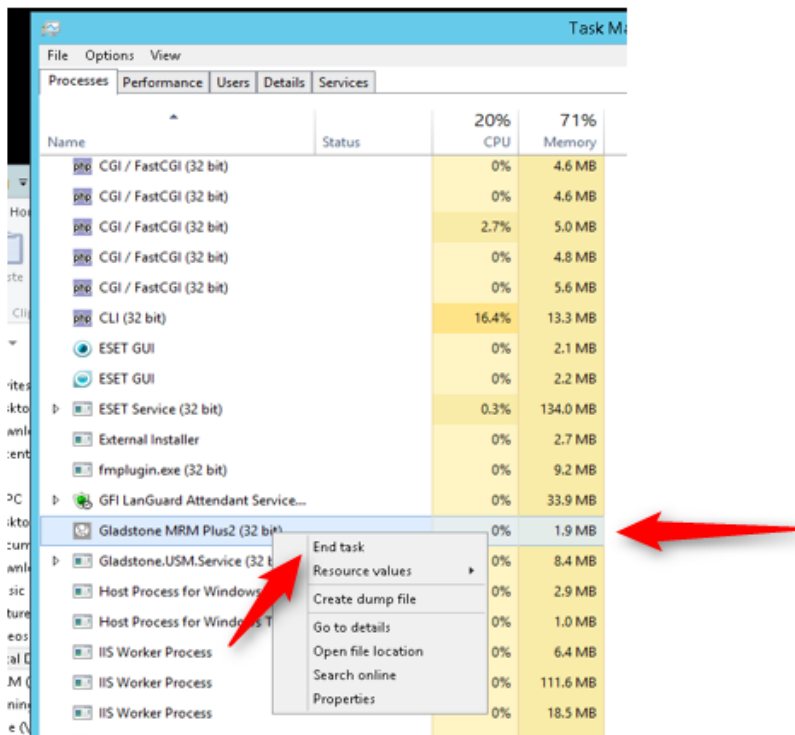
GB Group Install TLS Fix

GB Group Install – TLS Fix

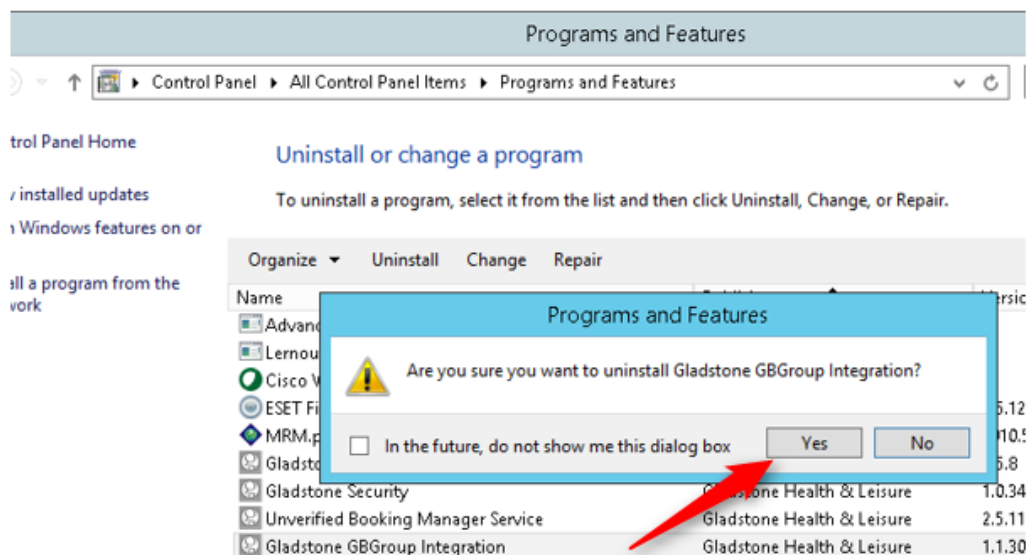
1/ Locate the Plus2 directory and make a backup of this



2/ Open the Task Manager and check that everyone is logged out of Plus2 are no instances of Plus2 are running. If there are any instances running, then please end the task as shown below.

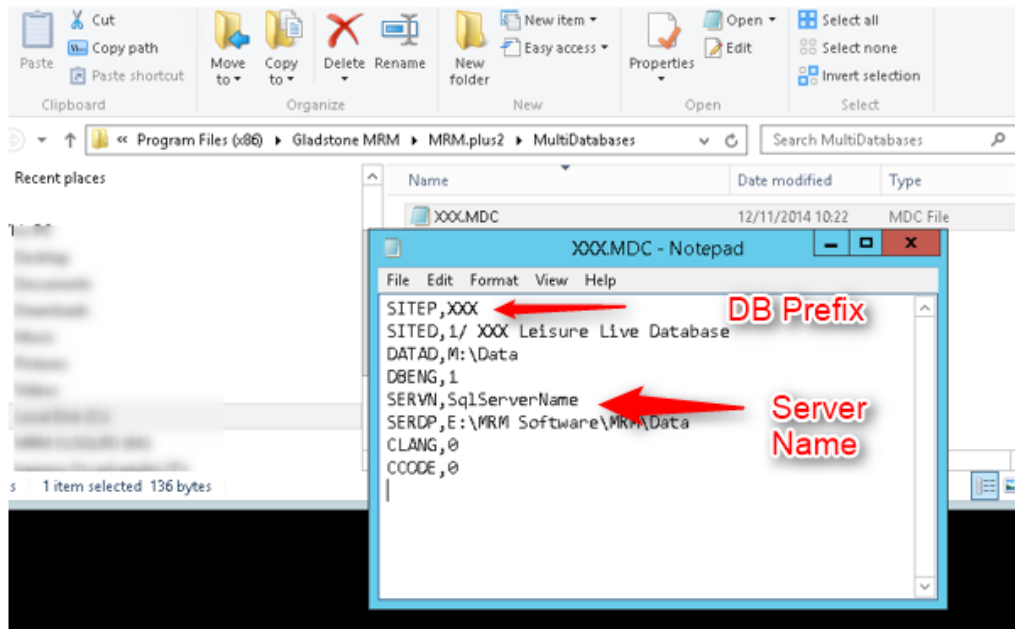


3/ Uninstall 'Gladstone GBGroup Integration' in 'Programs and Features'

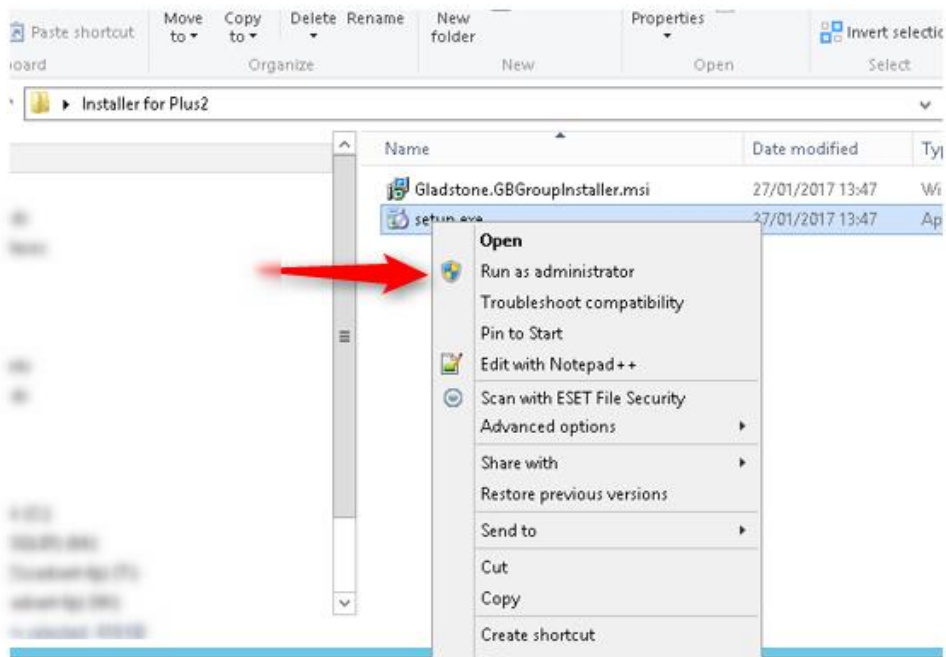


4/ Navigate to the Plus2 directory and open the 'MultiDatabases' folder. Select the .MDC which corresponds to your live database and use Notepad to open this.

Take a note of the value of 'SITEP' and 'SERVN' as you will need these later.

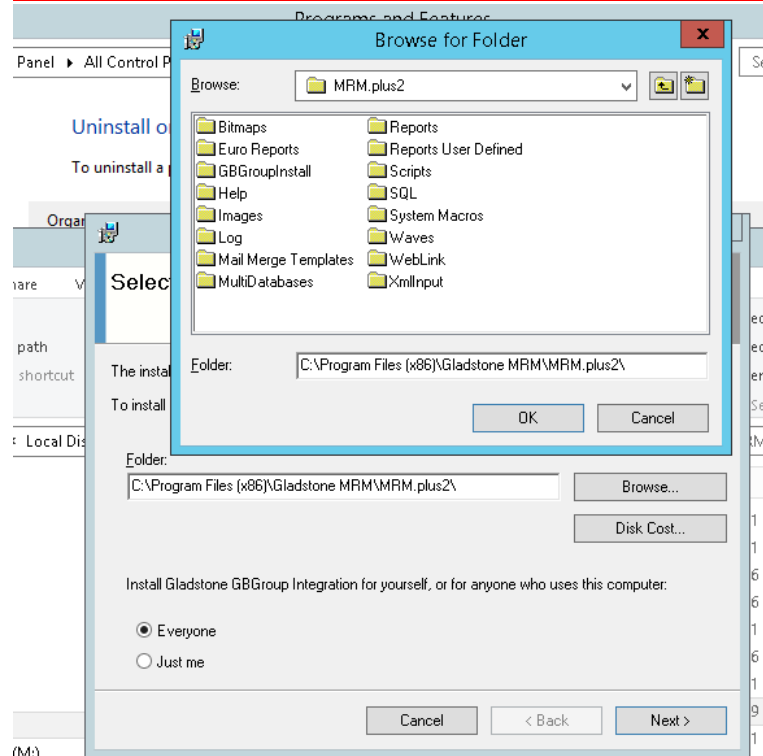


5/ Navigate to the folder named 'Installer for Plus2' and right-click on 'setup.exe' and select 'Run as administrator'

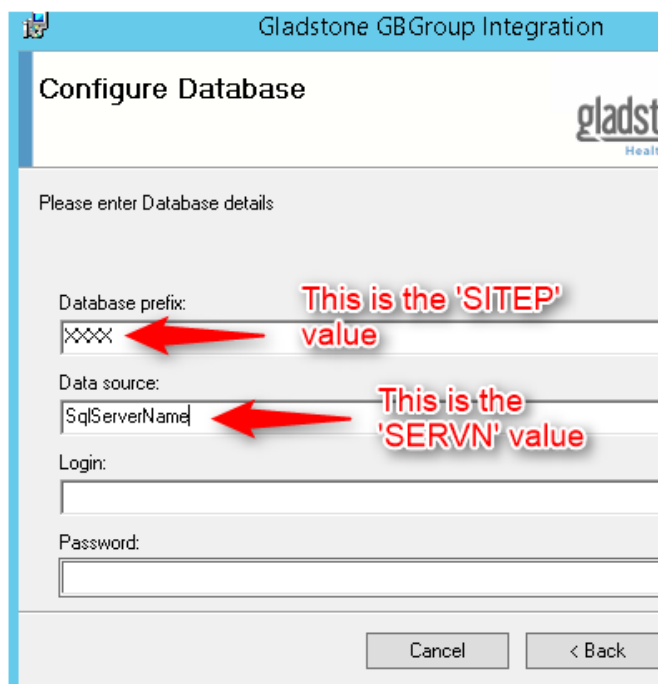


6/ When prompted to select an installation path, be sure to make sure that path is the location where Plus2 is installed.

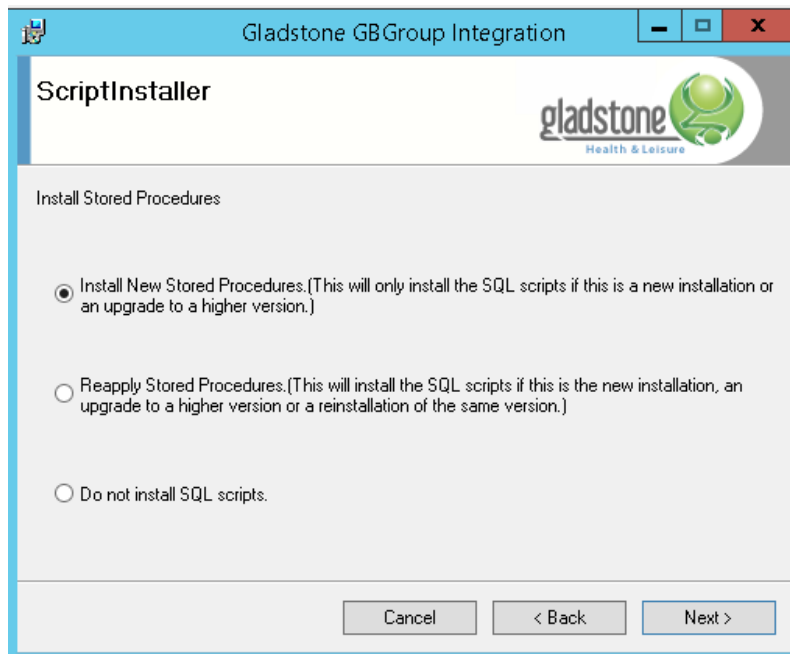
IT IS VERY IMPORTANT THAT THIS PATH IS THE PLUS2 DIRECTORY, IF THE PATH IS WRONG THEN THE SOFTWARE WILL NOT WORK.



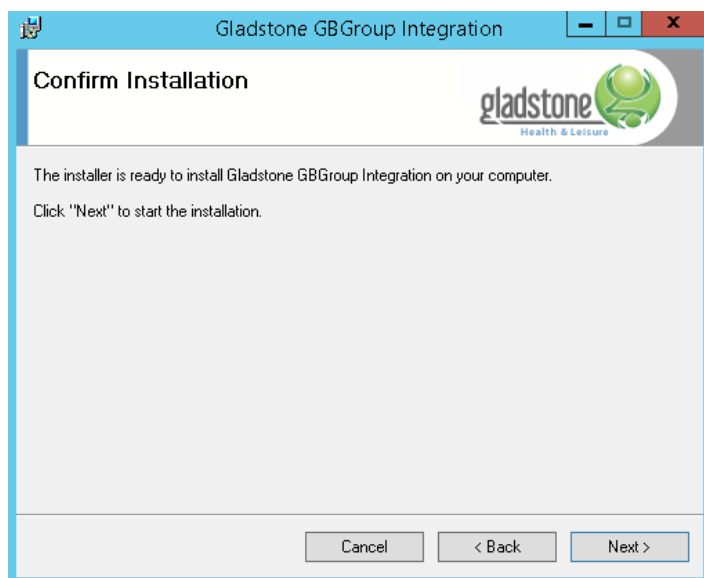
7/ When prompted for database details, use the values that you obtained in step 4. Leaving 'Login' and 'Password' blank, then select 'Next'



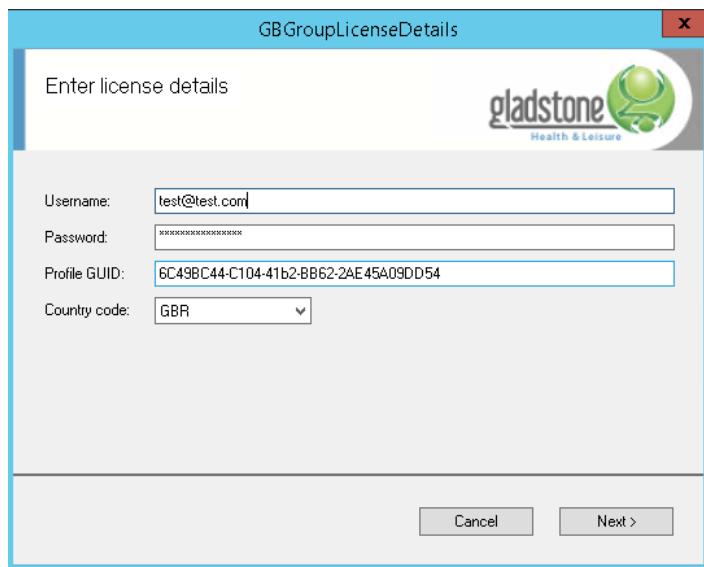
8/ Select 'Install New Stored Procedures' and select 'Next'



9/ Select 'Next' on the 'Confirm Installation' screen



10/ Make sure all fields are populated then Select 'Next' when presented with the following screen



GBGroupLicenseDetails

Enter license details

Username: test@test.com

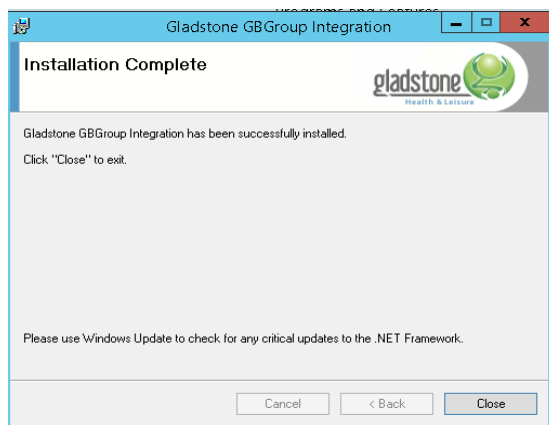
Password: xxxxxxxxxxxx

Profile GUID: 6C49BC44-C104-41b2-BB62-2AE45A09DD54

Country code: GBR

Cancel Next >

11/ Select 'Close'



Gladstone GBGroup Integration

Installation Complete

Gladstone GBGroup Integration has been successfully installed.
Click: "Close" to exit.

Please use Windows Update to check for any critical updates to the .NET Framework.

Cancel < Back Close

12/ Please test the Postcode Lookup functionality within Plus2.