

# Gantry Cranes

## ➤ Certified overload protection

### ➤ Requirements

- Safety cut-off in overload situations
- Lift protection
- Slack rope detection
- Unbalanced and single load detection
- Various load sensing methods
- Rough working environments
- Crane capacities ranging from 3 to 500 tonnes
- Compliance with EN 15011 / EN 13849 / EN 62061 (PL d / SIL2)

### ➤ Solutions

- Flexible standard overload protection systems
- Communication with crane controller
- Safety chain calculation
- Optimized crane uptime
- Reduced downtimes
- Load monitoring with alarm indication/advance warning
- Standard solutions with 1, 2, 4 or 8 sensors
- Support for redundant sensors
- Datalogger
- Service user interface

### ➤ Hardware

#### Cranes equipped with Hirschmann MCS iSCALE Control System:

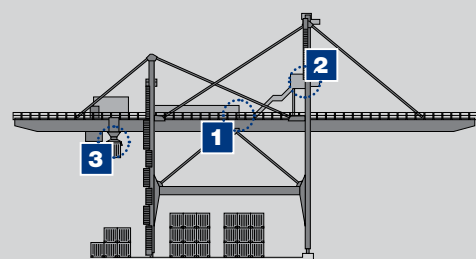
##### 1 Optimal visualisation with vSCALE D2:

- User-friendly HMI console with function keys and rotary encoder for display, operation, and diagnostics (e.g. error codes, load counter/load spectrum recorder)
- Horizontal or vertical mounting
- Temperature range: -30°C to +70°C
- Robust and long service life



##### 2 cSCALE S6: reliable control in harsh environmental conditions

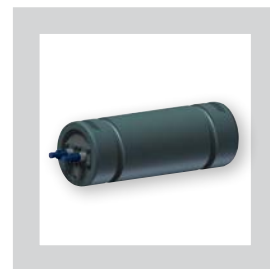
- IP20
- Expandable I/Os
- Integrated data logger
- 32-bit CPU with 48 MB flash memory
- Mid-range or high-end control
- Wire cabin mounted





### 3 Precise force measurement with fSENS sensors

- Enabled by fSENS RDKA or fSENS KMD Compression Load Cell or fSENS MA Load Pin
- Adapted to specific individual requirements
- TÜV certified



#### ➤ Software

- Safety cut-off in overload situations
- Special functions
- Configurable snag load protection
- Detection and monitoring system for cut-off in case of an unbalanced load in a container
- Slack rope detection

#### ➤ Datalogger

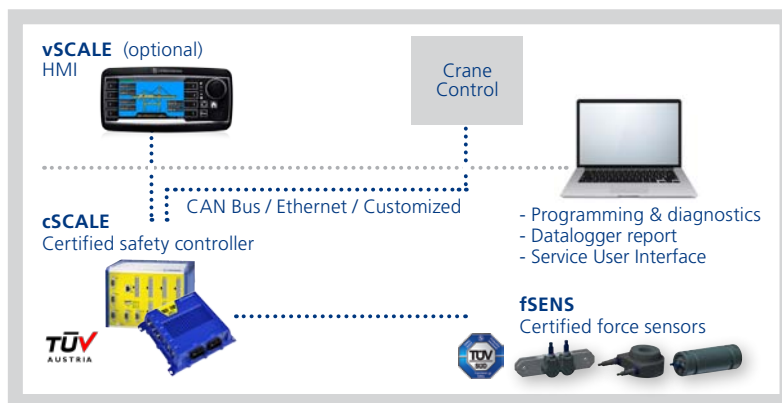
- Load counter (lift data counter according to standard)
- Load spectrum recorder (cumulative load counter according to standard)
- Easy data capture via USB, presentation and analysis in Excel
- Dynamic maintenance intervals

#### ➤ Features

- Standard Ethernet CANopen / PROFIBUS interface for external control by visualizing data transmitted to other control systems
- Parametrization/calibration/diagnosis by web visualization

#### Mobile Machine Control Solutions Hirschmann Automation and Control GmbH

Hertzstr. 32-34  
76275 Ettlingen, Germany  
Telephone: +49 (7243) 709-0  
hirschmann.mcs-sales@belden.com  
www.hirschmann-mcs.com



### Hirschmann MCS is the world market leader in safe load indication for telescopic and lattice boom cranes and a specialist for safety solutions in gantry and port cranes.

As one of the leading system suppliers, the company sets standards in innovative automation platforms for mobile applications in harsh environments. Drawing on expertise and experience gained during more than 40 years, the team of Hirschmann MCS enables communication between people and machines. The product and system solutions include software and hardware for sensors, controllers, and consoles for mobile cranes, earthmoving machines,

mining, road construction and port industry applications.

As a reliable, innovative, and flexible provider of leading-edge technology, high-quality products, and first-rate services, Hirschmann MCS is committed to ensuring that today's components and solutions already comply with tomorrow's specific safety requirements and generally valid standards.