

Installation Guide

10GX™ Patch Panel mounting on 19" racks

Version 03.00 2007 PX103840

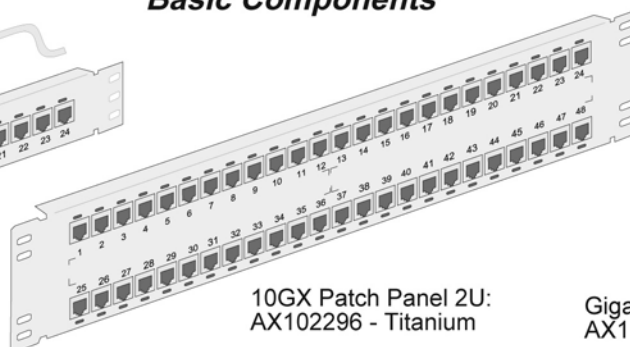
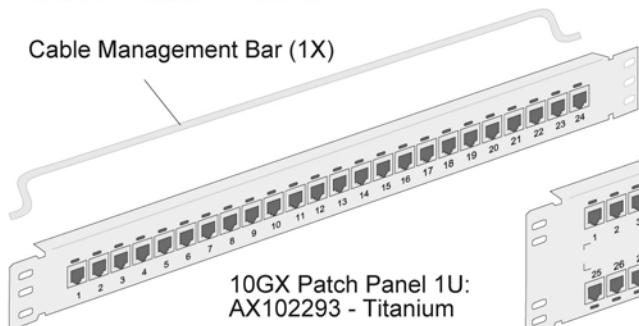
BELDEN

1 of 2 pages

10GX Patch Panel

Basic Components

Select the required components to your workplan (Typical items shown here)



Reference Documents
PX103771
- 10GX Module
Installation Guide

Machine Screws:
- 10 x 32 Qty: 4
- 12 x 24 Qty: 4



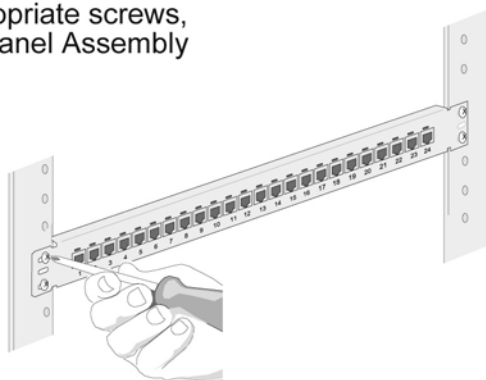
Velcro Ties - Qty: 4



GigaFlex Tool:
AX100749 (or equivalent)

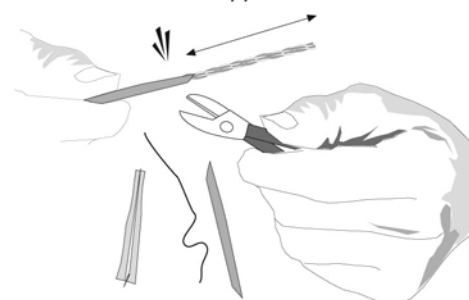
Standard Tools
- Phillips screwdriver
- Cable stripper
- Wire stripper

1. Using the appropriate screws, attach the Patch Panel Assembly to the rack.



(10 X 32 screws and 12 X 24 screws supplied)

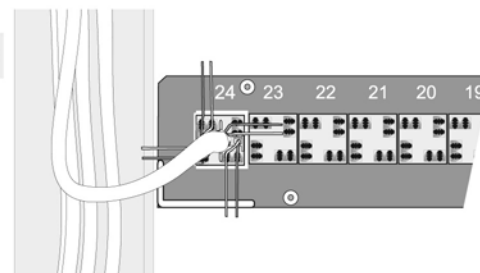
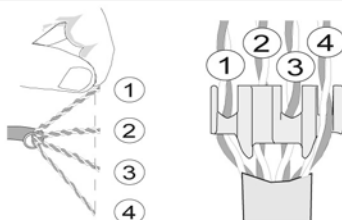
2. Prepare cable for termination.
approx. 3"



3. Wire Preparation

Refer to PX103771 for detailed instructions on terminating 10GX modules!

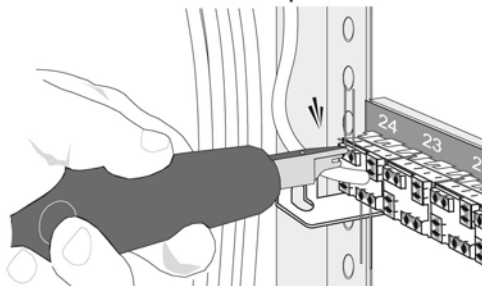
1	2	3	4
568A: BL	BR	G	O
568B: BL	BR	O	G



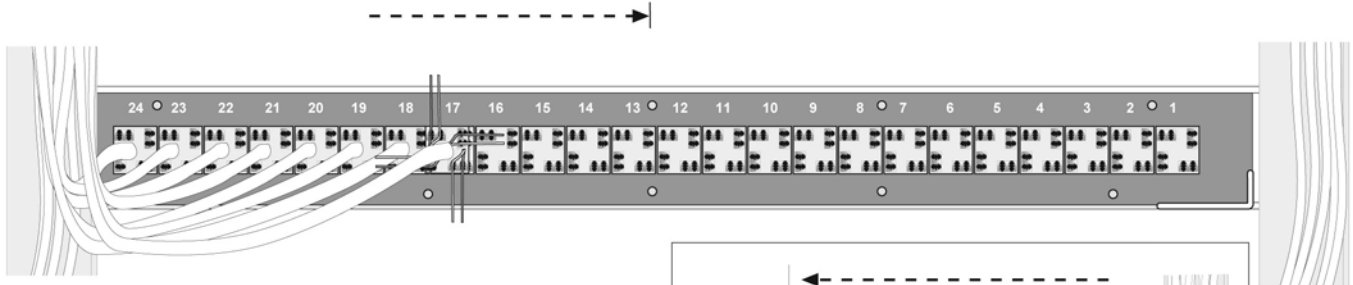
4. Wire Termination

Using the GigaFlex Connecting Tool, terminate the first four pairs onto the **first module**.

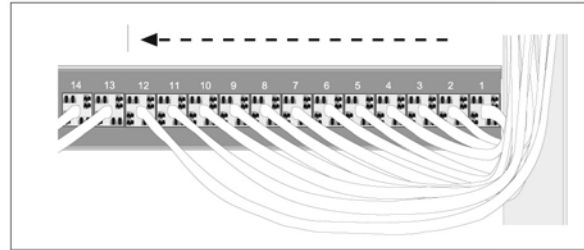
Important:
Always respect minimum bend radius of the cable!



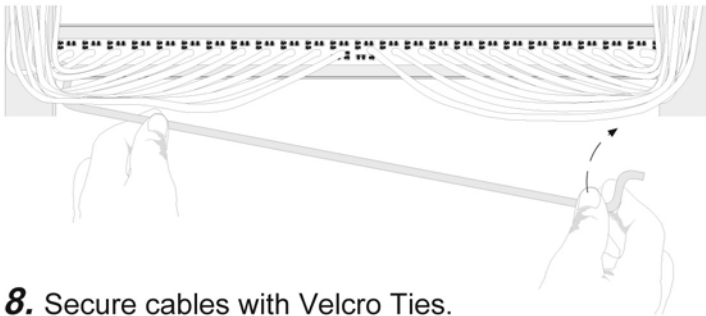
5. Continue assembling the **left side**, in this sequence, to the center of the panel.



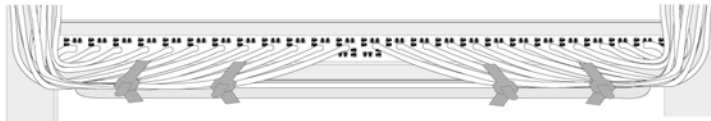
6. Repeat the assembly sequence for the **right side**, moving inward to the center of the panel.



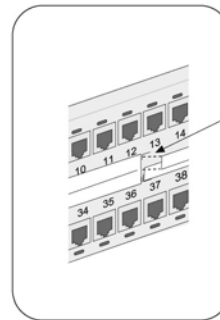
7. Guide the Cable Management Bar under the cables, and secure in the lower mounting holes of the patch panel.



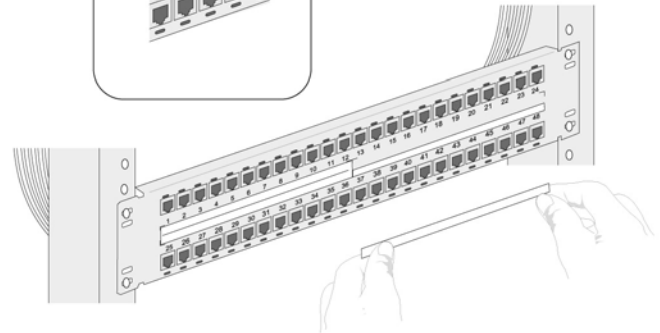
8. Secure cables with Velcro Ties.



9. Install Port I.D. Labels.



Use positioning marks as a guide.

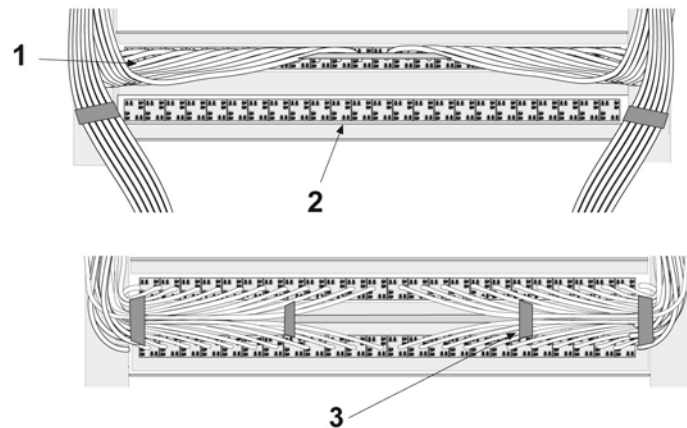


A completed 10GX Patch Panel Assembly

Installer's Tip

To facilitate wiring a **2U Type** 10GX Patch Panel, the following procedure is recommended:

1. Terminate the **upper row**, as previously shown.
2. Terminate the **lower row**.
3. Secure cables with Velcro Ties.



For additional technical information on the 10GX Patch Panel, or our other connecting products, call 1-800-858-7954