



### 1



#### GUDIBI NA'

ne nisa, ne xhabu, ne  
panapu alcohol ne' laa  
gudibine ni

### 2



#### BITAGU XHI NE RUA'LU

pa' gusiaaxhilo o curuu lu, ndani  
xacodo na' luu biquiñe, ne panapu  
bayu, biquiñe laa ne bisabi' ni

### 3



#### BIQUIÑE TI GUIDCHII GUTAGU RUALU

Pa' nabepe cusiaaxhiluu  
ne curuu

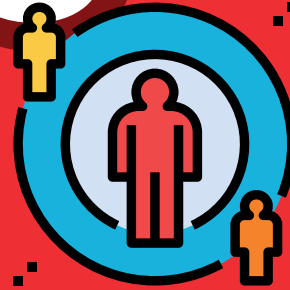
### 4



#### CADII CANUU XII LU', RUALU' O LULU'

Pa' caru quibilu' nalú

### 5



#### BIDUBA TI NDAGA DEE LABE

Pa' guyu binii huara napa ixha gaa

### 6



#### BIYUBI BINI RUSIANDA

Pá napu' shindxa',  
cayuuba ladu', guudxi' o hruu'

### 7



#### CANI CHITOO LO LAA, BIQUI' CANI NEZAA

jma' ca beela ma' ni

### 8



#### CADII GUDII DIOU

nii cayou o ni cayeuu  
studxi

### 9



#### CADII GUIXHIÑALU

manii nuu raaña

