



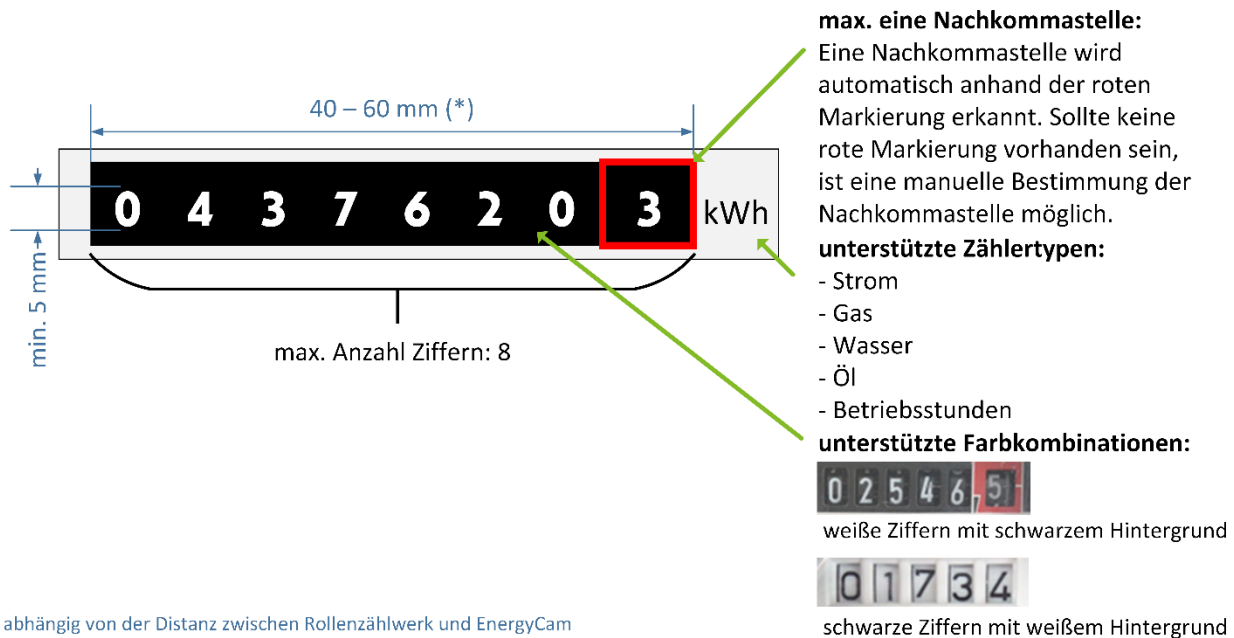
Q-loud EnergyCam1 Compatible meters

Q-loud

Ein Unternehmen der QSC AG

EnergyCam1 - Compatible meters

1. EnergyCam in general



max. Anzahl Ziffern: 8	Max. number of digits: 8
<p>max. eine Nachkommastelle:</p> <p>Eine Nachkommastelle wird automatisch anhand der roten Markierung erkannt. Sollte keine rote Markierung vorhanden sein, ist eine manuelle Bestimmung der Nachkommastelle möglich.</p> <p>unterstützte Zählertypen:</p> <ul style="list-style-type: none"> • Strom • Gas • Wasser • Öl • Betriebsstunden 	<p>Max. of one decimal place:</p> <p>One decimal place is detected automatically based on the red square. If there is no red square, the decimal place can be determined manually.</p> <p>Compatible meter types:</p> <ul style="list-style-type: none"> • Electricity • Gas • Water • Oil • Operating hours
<p>unterstützte Farbkombinationen:</p> <p>weiße Ziffern mit schwarzem Hintergrund</p>	<p>Compatible colour combinations:</p> <p>White digits against a black background</p>

Namenskonvention (Dateieigenschaft Kategorie) Dokument_Versionsnummer_Datum

EnergyCam1 - Compatible meters

schwarze Ziffern mit weißem Hintergrund	Black digits against a white background
(*) abhängig von der Distanz zwischen Rollenzählwerk und EnergyCam	(*) Depending on the distance between the roller counter and the EnergyCam

- ✓ EnergyCam supports mechanical meters such as electricity, gas, water, oil and operating hours (support only for Q-loud approved gas and electricity meters)
- ✓ Support for forward and reverse meters
- ✓ Mounting the EnergyCam takes place as standard and can also take place overhead

To be able to install the EnergyCam on an electricity, gas, water, oil or operating hours meter, the meter sight glass has to be freely visible and large enough for the EnergyCam to be mounted above or below the roller counter. Owing to the angled view of the camera, the cut-out on the front panel must be large enough to view the digits in full. Any smudges on the meter window under or above the roller counter may interfere with the EnergyCam working properly.

EnergyCam1 - Compatible meters

2. EnergyCam on Ferraris meters

The EnergyCam can be mounted on Ferraris meters with:



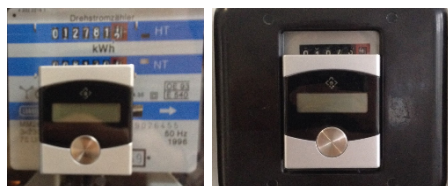
Small sight glass

Standard sight glass



Meter, top

Meter, bottom



Coloured front panel

Black and white front panel

✓ Small or standard sight glasses

✓ Above or below

✓ Coloured or black-and-white front panels

Owing to the design of individual meters, the picture taken by the EnergyCam may not record all the digits on the counter.

A constantly updated list of non-compatible meters can be found in the document "Q-loud Energy Cam1 - Non-Compatible Meters - Ferraris Meters"

EnergyCam1 - Compatible meters

Namenskonvention (Dateieigenschaft Kategorie) Dokument_Versionsnummer_Datum