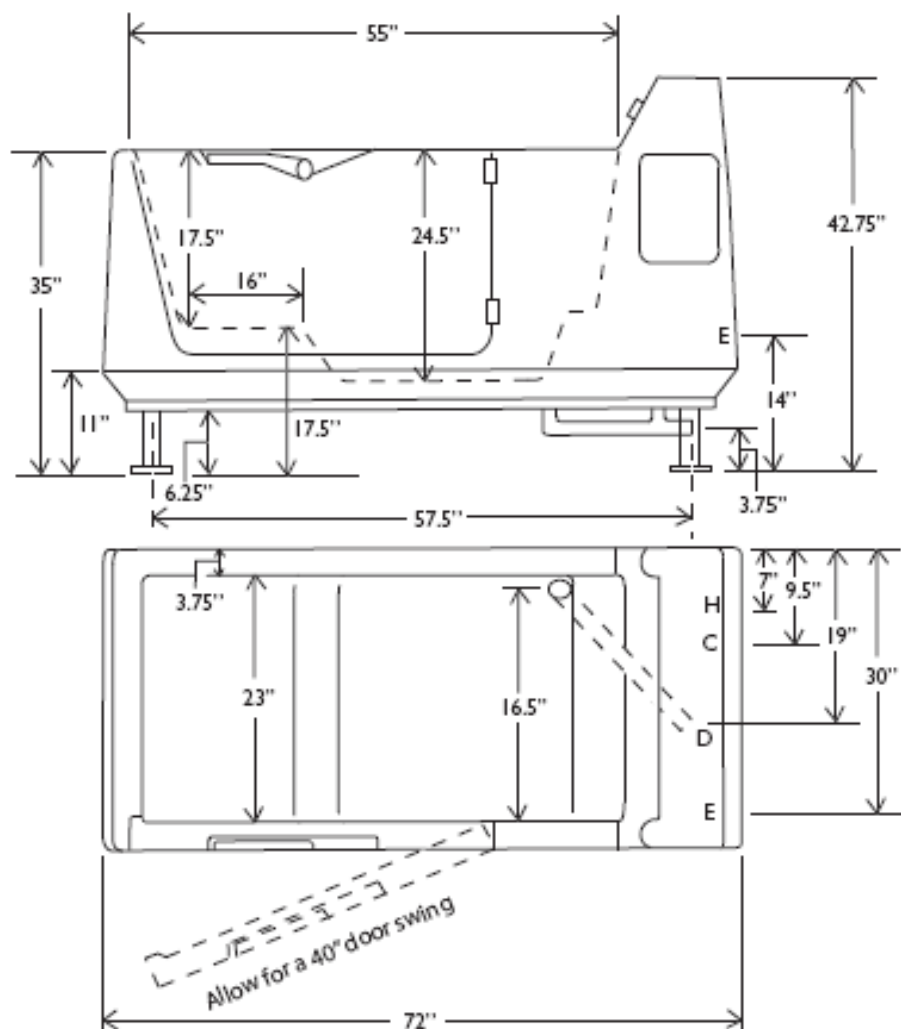


TheraPure™ 3602GXL Free-Standing Side-Entry Tub



Invacare Continuing Care, Inc.

www.invacare-cc.com

info_icc@invacare.com

USA

One Invacare Way
Elyria, Ohio 44035
USA
800-668-2337

Canada

994 Hargrieve Road
London, Ontario
N6E 1P5 Canada
800-668-2337

Trademarks are identified by the symbol ™ and ®.
All trademarks are owned or licensed to Invacare Corporation or its subsidiaries unless otherwise noted.

© 2010 Invacare Corporation.



Yes, you can: