

Diamonds - It's brilliant!

# HTC Superfloor™ Bronze



## Definition

The HTC Superfloor™ method involves finishing concrete floors mechanically by diamond grinding and/or polishing. HTC Superfloor™ is available in four different concepts, Platinum, Gold, Silver and Bronze.

This product data sheet describes HTC Superfloor™ Bronze.



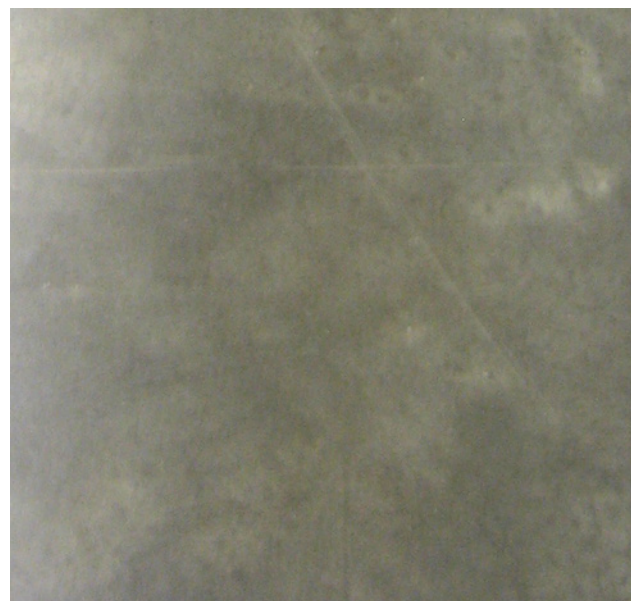
## HTC Superfloor™ Bronze

**Bronze** is a concept solely consisting of polishing steps. This concept does not expose fine material, gravel or larger aggregates. The concrete skin is polished without grinding it away, and the polished surface makes the floor easy to clean and more resistant to tire marks from forklifts and dirt. Moreover, light is reflected in a pleasant way.

**Important!** The concrete surface must be smooth with good surface treatment during casting. Irregularities in the concrete surface's colour and appearance are not removed by polishing.

The floor is polished according to a well-established and tested method, using HTC's machines and HTC's diamond tools and in accordance with HTC's grinding guide.

The floor receives a completely smooth and glossy surface.



# HTC Superfloor™

## Bronze

### Areas of application

- On old as well as newly laid concrete
- Public spaces
- Shops
- Domestic environments



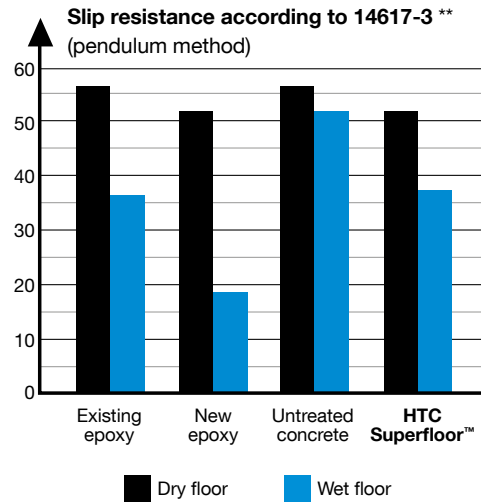
### Advantages

- Ecological - concrete consists solely of natural material
- Long service life and minimal maintenance give a low LCC cost (Life Cycle Cost)\*.
- Diffusion open
- No diffusion-tight surface layer
- Easy to clean
- Improved work environment thanks to lighter and cleaner premises
- Minimises harmful vibrations for forklift drivers
- Quieter traffic and reduced forklift maintenance



## Technical characteristics

HTC Superfloor™ has been tested for Friction at SP (Technical Research Institute of Sweden).

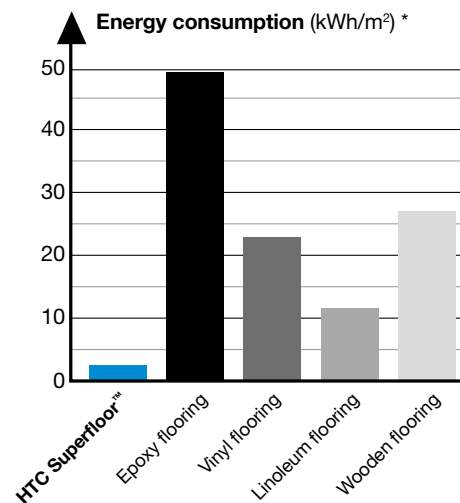


## Environmental information

A floor polished in accordance with the HTC Superfloor™ Bronze concept consists of pure concrete.

In the process, only environmentally friendly impregnation and cleaning fluids are used, which means the floor doesn't present a hazard to health or the environment.

HTC Superfloor™ Bronze has a minimum impact on the environment.



### HTC Superfloor™ vs. epoxy flooring. How many times less is the environmental impact (Factor)? \*

	Epoxy Peran 3 mm	HTC Superfloor™	Factor
<b>Potential greenhouse effect CO2</b>	16 700	88.2	189
<b>Acidification</b>	102	0.186	548
<b>Eutrophication</b>	13.5	0.0178	758

\* Source: "Life Cycle Assessment of Industrial Flooring", LITH-IKP-EX-06/2383--SE

\*\* Source: Report from SP, F812033-2

# HTC Superfloor™

## Bronze

### Fire Class

The European Commission has awarded HTC Superfloor™ the highest European classification, A1FL (decision 96/603/EC) and it is therefore considered to be fireproof/non-combustible.

### ESD - Electrostatic discharge

Resistance tests, performed on beam structures and on concrete slabs on the ground, have shown that HTC Superfloor™ complies with the requirements in standard SS-EN 61340-5-1.

Measured values also fulfil the international IEC standard and the American standard ANSI/ESD.

Walking tests with ESD shoes give, in general, no or little static charge. HTC Superfloor™ has not exceeded the threshold values for the ESD standard in any case. The limit values in the standard for handling electronics have not been exceeded in any case by HTC Superfloor™. Nevertheless, we still recommend the use of END shoes on HTC Superfloor™, particularly when handling electronics with maximum 100 volts.

### Cleaning and maintenance

Cleaning: A floor polished in accordance with the HTC Superfloor™ Bronze concept is cleaned using a combi-scrubber and Twister™ Green, water and, where appropriate, Twister™ Floor Conditioner. Smaller areas can be dry-mopped.

**NB!** Strong alkaline or acidic agents will damage the floor properties and should not be used. For further information, go to [www.htc-twister.com](http://www.htc-twister.com).

### Surface protection

HTC Stain Protection Pore primer.

### Reconditioning

If a floor polished in accordance with the HTC Superfloor™ Bronze concept becomes dull, the gloss and cleanability are restored by simple repolishing.

### Project planning guide

Text according to the following:

"Concrete floor treated in accordance with HTC Superfloor™ Bronze".

Polishing in accordance with HTC's grinding guide. By polishing a test area, the floor quality and appearance can be checked, and the best work method selected.

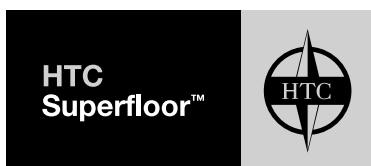
During new casting, there is the opportunity to colour the cement paste, thus creating a totally unique floor.

HTC Superfloor™ is suitable for concrete floors that are constructed with traditional net reinforcement, not steel fibres.

### Reports

All reports referred to in this document are available for downloading from our website. In some cases, the report is only available in the original language.

Use the link [www.htc-floorsystems.com/testresult](http://www.htc-floorsystems.com/testresult) for direct access to the reports.



#### HTC Sweden AB

Postal address: Box 69, 614 22 Söderköping

Office/goods address: Klevvägen 7

614 92 Söderköping

Telephone: 0121-294 00. Fax: 0121-152 12

Email: [info@htc-sweden.com](mailto:info@htc-sweden.com)

