

## Monthly update – July 2017

John Lockton +61 2 8247 3118 | john.lockton@wilsonsadvisory.com.au; Michael Rong +61 3 9640 3863 | michael.rong@wilsonsadvisory.com.au

### Domestic market

The Australian market had another flat month in July, down 0.01%, with gains from the Materials (+3.6%) and Financials (+1.3%) sectors propping up the index. Within the Financials sector two of the 'Big Four' Westpac (+4.3%) and ANZ (+3.2%) enjoyed positive gains, while non-bank lenders FlexiGroup (+5.8%) and recently listed Eclix Group (+3.9%) rose after reaffirming earnings guidance for FY17. Gold miner Saracen Mineral Holdings (+15.0%) led the gains for the Materials sector.

Healthcare, which added 23.5% in H1 2017, was down in July, falling 7.5%. Mayne Pharma (-11.5%) was the hardest hit, with further underperformance of its \$900m generic portfolio acquisition from Teva Pharmaceutical Industries. Bucking the trend was Sigma Healthcare (+7.3%), which reached a negotiated settlement with Chemist Warehouse Group over a disputed supply agreement. Australian small cap shares managed a small positive gain, with the S&P/ASX Small Ordinaries Index returning 0.3%.

### Global markets

The S&P 500 gained 1.9% in USD terms and pushed to a new record high, but fell 1.9% in AUD terms as the USD weakened. Telecommunications (+2.3%) and Information Technology (+0.4%) were the only sectors to gain in AUD terms. Heavyweight Verizon Communications posted 5.7%, while Facebook A-shares rose 7.9% and GPU manufacturer NVIDIA gained 8.2%. The Dow Jones Industrial Average pushed above 22,000 points for the first time, with no small thanks to Apple, which jumped 3.3% in USD terms before hitting a new record high in early August.

Globally, the MSCI World Index lost 1.6% in AUD terms with the Japanese and German markets the main drags. The Euro Stoxx 600 Index fell 0.8%, with gains from the Resources (+7.7%) and Insurance (+2.9%) sectors helping to stem the tide. The DAX fell 3.9% as a crisis erupted in Germany's automotive industry, with the European and German competition authorities threatening the Big Five (Audi, BMW, Daimler, Porsche and VW) with multi-billion euro fines for cartel behaviour. The French CAC 40 eased 1.0%, while in the UK the FTSE 100 Index fell a further 1.7% after dropping 4.7% in June. In Asian markets, the Nikkei 225 Index fell 2.6% and the Shenzhen CSI 300 Index was down 1.3%. The MSCI Emerging Markets Index rose 1.8%, supported by Chinese and Indian shares.

### Market wrap

Index	July return
S&P 500 Index	2.1%
MSCI World Index	1.5%
MSCI Emerging Markets (AUD)	1.8%
FTSE 100 Index	0.9%
DAX (Germany)	2.2%
CSI 300 Index	1.9%
Nikkei 225 Index	(0.5%)
STOXX Europe 600	(0.4%)
S&P/ASX 200 Index	0.0%
S&P/ASX All Ordinaries	0.2%
S&P/ASX Small Ordinaries	0.3%

Source: Capital IQ. All returns in local currency.

### Table of contents

Month in review – markets	1
Our LIC key preferences	3
LIC key metrics	10
Charts: Monthly change in premium/discount to NTA	13
Performance metrics	15
Charts: NTA premium/discount and total return vs benchmark	18
Charts: 12-month historical dividend yield	19
Charts: Pre-tax NTA premium discount vs long-term average	21
Charts: Pre-tax NTA growth vs NTA premium/discount	23
Charts: Historical premium/discount to pre-tax NTA	25

### Wilsons Investment Strategy

Issued by Wilsons Advisory and Stockbroking Limited ("Wilsons") ABN 68 010 529 665 - AFSL No. 238375, a participant of ASX Group. Past performance is not a reliable indicator of future performance. This document should be read in conjunction with the disclosures and disclaimer at the end of this document.

## Currencies

The AUD rose 3.8% against the USD in July, from 0.7689 to 0.7980, reaching its highest level since May 2015. In trade-weighted terms, the AUD was lifted 2.8%, boosted by a rise in trade and commodity prices. The AUD ended the month higher against major currencies, including the GBP (+2.5%), JPY (+2.0%), NZD (+1.5%) and EUR (+0.5%).

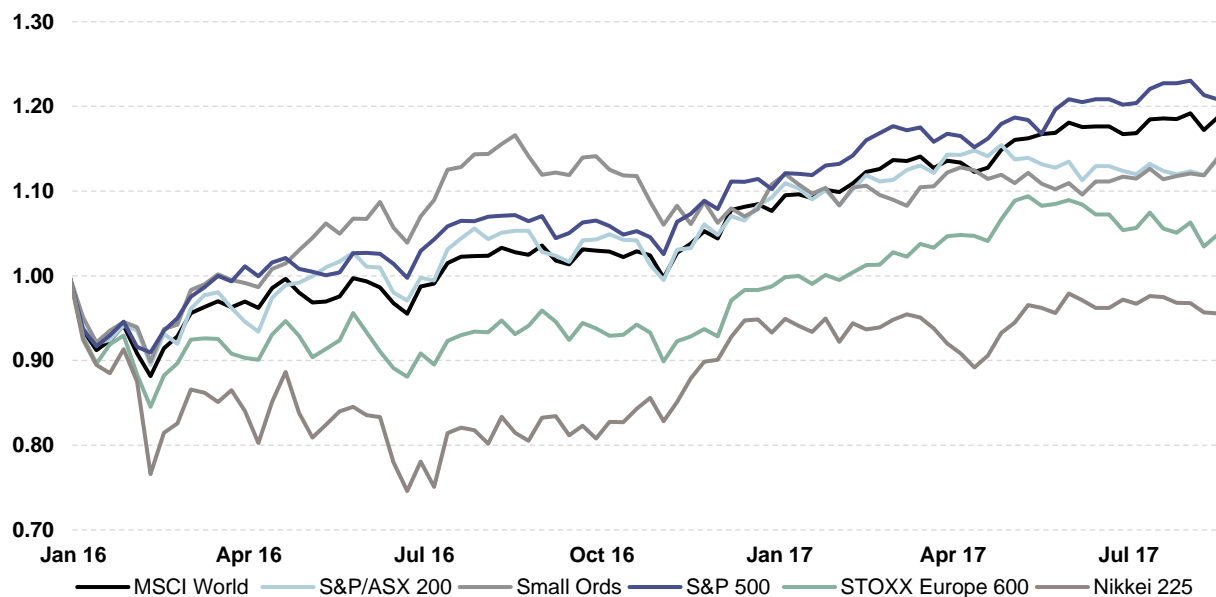
The US Dollar Index closed the month 2.9% lower, reaching its lowest level since January 2015. The USD fell against major currencies including the EUR (-3.2%), JPY (-1.8%) and GBP (-1.3%), and gaining modestly against the CHF (+0.9%). The USD has been falling since the start of 2017, and was hit hard heading into the non-farm payrolls release by reports that a grand jury had been empanelled to investigate the Trump campaign's ties with Russia. Meanwhile, the EUR has had an impressive winning streak through the year to date, associated with continued signs of economic recovery on the continent.

## Commodities

Commodities rallied through July, with sharp moves higher in copper (+7.3%) and nickel (+8.8%). Tin (+3.4%) built steadily through the month, while lead (+1.8%) and zinc (+1.3%) were flatter but still posted gains. Aluminium (-0.1%) finished the month slightly down despite a late rise. Gold (+2.2%) finished higher at US \$1,269.44/oz after hitting a low of \$1,212.46. The price of iron ore delivered to Qingdao in China rose a further 13.5% in July after shooting 13.9% in June, finishing the month at US \$73.70/t, but still below its February high of \$94.86.

Oil ended the month on a high with US inventories falling by 10.2m bbl in the final week, Saudi Arabia's energy minister announcing a cap on exports, and US energy companies announcing capex reductions. The Brent crude oil spot price rose from US \$47.01/b to \$51.99 (+10.4%) through the month, and similarly WTI increased from US \$46.02/b to \$50.21.

World equity indices' price performance (rebased 01 Jan 2016)



Source: Wilsons, Lonsec, S&P Capital IQ

## LIC key preferences

---

We provide an overview of our preferred LICs within each category:

1. Domestic equities – large/medium cap and medium/small cap
2. Absolute return funds
3. International equities
4. Specialist funds

When selecting these funds we examined their performance against the following key metrics:

- **NTA and total return (share price and dividends paid) performance** – has the LIC delivered on its investment objective of outperforming its underlying benchmark?
- **Dividends paid and stability of dividends paid** – has the LIC paid a dividend to shareholders and has there been a stable and continuous dividend paid profile?
- **Premium/discount to NTA** – what is the current premium/discount to NTA? How has the share price traded relative to its NTA through time?
- **Liquidity** – is there sufficient liquidity to enter and exit the fund?
- **Underlying management team** – is the manager well regarded in the market? Is there transparency in the underlying portfolio and the team's investment process?

Company	ASX code	Investment focus
<b>Australian Equities</b>		
AMCIL	AMH	Large/Medium Cap
QV Equities	QVE	Medium Cap
Acorn Capital Investment	ACQ	Small Cap
<b>Absolute Return Funds</b>		
Watermark Market Neutral Fund	WMK	Market Neutral
<b>International Equities</b>		
Antipodes Global Investment Company	APL	Global
<b>Specialist Shares</b>		
Blue Sky Alternatives Access Fund	BAF	Alternative Assets



## Domestic equities large cap: AMCIL (AMH)

### Key data

Investment style	All cap, value
Benchmark	S&P/ASX 200 Accumulation Index
Management fee	0.77%
Performance fee	No
Market cap	\$227.0m
Listing date	10 February 2000

### Share price

As at 22/08/2017 \$0.94

### NTA at 31/07/2017

Pre-tax NTA \$0.94  
 Post-tax NTA \$0.88

### Share price premium/discount to NTA

Pre-tax NTA -1%  
 Post-tax 6%  
 1-year average -2%

### 12-month historical

Dividend yield 4.0%  
 Gross dividend yield 5.7%

Source: Wilsons, company data, IRESS  
 \*NTA performance is exclusive of dividends paid. Total return is share price and dividends paid.

### Fund description

AMCIL manages a concentrated investment portfolio comprising 40 to 50 stocks covering large and small companies in the Australian equity market.

As a result, small companies by market size can have an equally important impact on portfolio returns as larger companies in the Australian market. The number of holdings in the portfolio will depend on market conditions and investment opportunities. The selection of stocks in the portfolio is based on attractive valuations as well as the outlook for growth and the competitive structure of the industry.

Given the concentrated investment focus of AMCIL, holdings will be sold from time to time to fund additional investments to the portfolio.

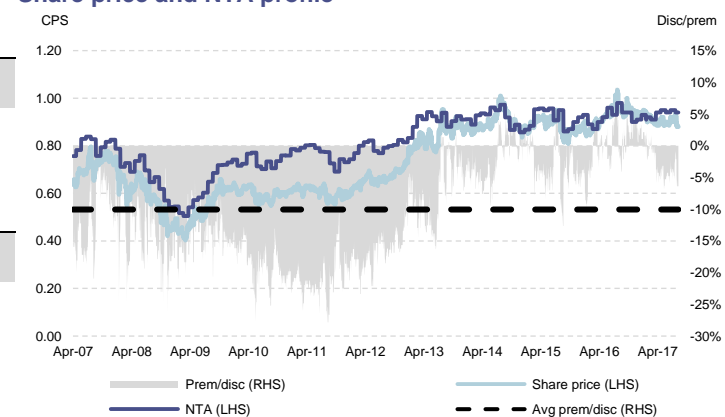
### Portfolio performance\*

Total return			Total return out/under-performance		
1yr	3yr	5yr	1yr	3yr	5yr
-4%	8%	82%	-15%	-27%	14%

Pre-tax NTA performance			Pre-tax NTA out/under-performance*		
1yr	3yr	5yr	1yr	3yr	5yr
-4%	-3%	19%	-8%	-8%	-22%

### Share price and NTA profile



### Top holdings as at 31 July 2017

BHP Billiton	4.42%
Lifestyle Communities	4.12%
Mainfreight	4.00%
Commonwealth Bank	3.91%
National Australia Bank	3.89%

### Sector allocation

Not disclosed



## Domestic equities medium cap: QV Equities (QVE)

### Key data

Investment style	Value, medium cap, ex top 20
Benchmark	S&P/ASX 300 Accumulation Index excluding the S&P/ASX 20 Accumulation Index
Management fee	1.10%
Performance fee	No
Market cap	\$371.3m
Listing date	22 August 2014

### Share price

As at 22/08/2017 \$1.36

### NTA at 31/07/2017

Pre-tax NTA \$1.19  
Post-tax NTA \$1.15

### Share price premium/discount to NTA

Pre-tax NTA 14%  
Post-tax 18%  
3-yr average 0%

### 12-month historical

Dividend yield 2.5%  
Gross dividend yield 3.5%

Source: Wilsons, company data, IRESS  
\*NTA performance is exclusive of dividends paid. Total return is share price and dividends paid.

### Fund description

The investment objective is to provide long-term capital growth over a five year-plus investment horizon through investment in a diversified portfolio of quality, undervalued ASX-listed equities and other investment securities, outside the ASX top 20 securities.

The ASX top 20's composition is very concentrated by sector, with the Financials and Materials sectors combined representing almost 70% of holdings. An investment portfolio that is based on stocks outside the top 20 has a much broader and evenly spread set of sectors.

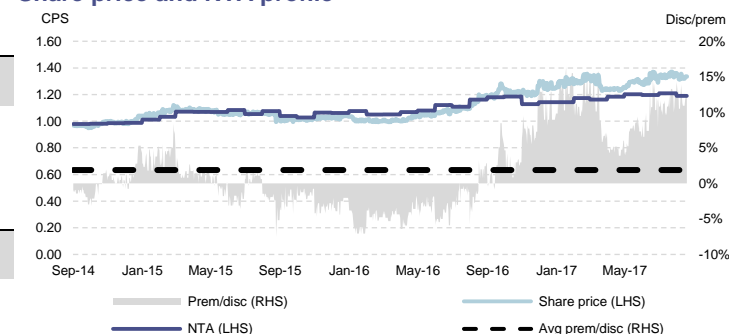
It is QV's belief that companies ex the top 20 can still be leaders in their field with competitive advantages over their peers and strong recurring and predictable earnings offering greater opportunities for above market returns.

As well as long-term capital growth, Investors Mutual (QV is one of IML's funds) is focused on long-term income growth, seeking investment opportunities that pay sustainable and growing dividends with active franking credits. The portfolio is managed from an Australian investor's perspective, with tax being an important consideration in its daily management.

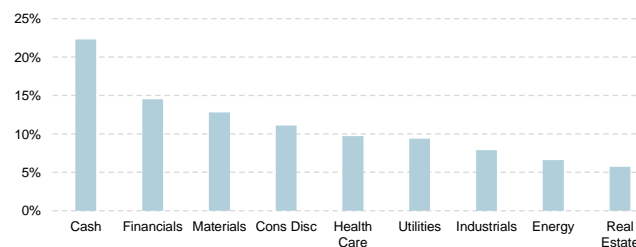
### Portfolio performance\*

Total return			Total return out/under-performance		
3m	6m	1yr	3m	6m	1yr
8%	8%	28%	7%	0%	17%
Pre-tax NTA performance			Pre-tax NTA out/under-performance*		
3m	6m	1yr	3m	6m	1yr
-1%	1%	2%	-1%	-4%	-4%

### Share price and NTA profile



### Sector allocation



### Top holdings as at 31 July 2017

Bank of Queensland	3.40%
Sonic Healthcare	3.30%
Clydesdale Bank	3.30%
Pact Group	3.20%
Fletcher Building	3.20%



## Domestic equities small cap: Acorn Capital Investment (ACQ)

### Key data

Investment style	Neutral, small/micro cap (incl unlisted)
Benchmark	S&P/ASX Small Ordinaries Accumulation Index
Management fee	0.95%
Performance fee	20% of outperformance of funds NAV to the benchmark, subject to various tests
Market cap	\$45.6m
Listing date	01 May 2014

### Share price

As at 22/08/2017 \$0.97

### NTA at 31/07/2017

Pre-tax NTA \$1.10  
Post-tax NTA \$1.07

### Share price premium/discount to NTA

Pre-tax NTA -12%  
Post-tax -9%  
1-yr average -13%

### 12-month historical

Dividend yield 1.9%  
Gross dividend yield 2.7%

Source: *Wilsons, company data, IRESS*  
\*NTA performance is exclusive of dividends paid. Total return is share price and dividends paid.

### Fund description

One of Australia's few specialist listed funds to invest in Australian microcap shares, Acorn Capital focuses on this generally neglected part of the market because of the lack of research in this area provides scope to uncover growth opportunities.

Acorn aims to exploit inefficiencies in the pricing of stocks that arise from information gaps about microcaps, and to identify opportunities for long-term growth.

The fund is style and sector neutral, holding a portfolio of typically between 65-80 stocks with a low expected portfolio turnover.

Microcap companies are defined by Acorn's manager as those entities that have an equity valuation less than the 250th largest, by full market capitalisation (and not free-float adjusted), ASX-listed entity.

Microcap companies include both listed microcaps (being those listed on ASX) and unlisted microcaps (being either entities that are not ASX listed, or non-ASX listed instruments of listed microcaps).

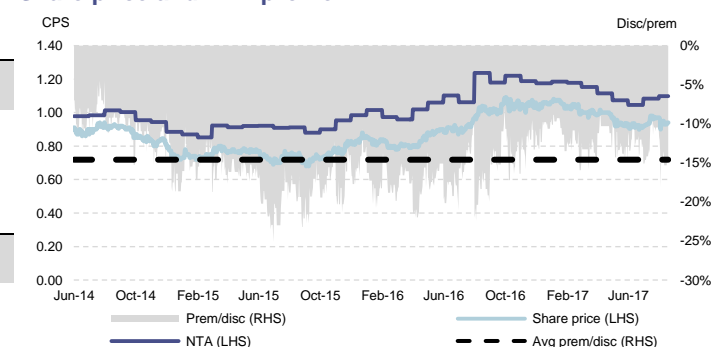
### Portfolio performance\*

Total return			Total return out/under-performance		
3m	6m	1yr	3m	6m	1yr
0%	-4%	4%	1%	-6%	3%

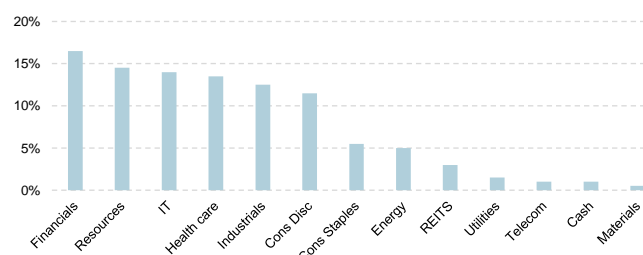
  

Pre-tax NTA performance			Pre-tax NTA out/under-performance		
3m	6m	1yr	3m	6m	1yr
2%	-7%	-11%	3%	-8%	-12%

### Share price and NTA profile



### Sector allocation



### Top holdings as at 31 July 2017

HUB24	6.80%
Genea (UL)	4.70%
Carbon Revolution	3.40%
Redbubble	3.10%
Msl Solutions	2.90%

\*(UL) Unlisted



## Absolute: Watermark Market Neutral (WMK)

### Key data

Investment style	All cap, market neutral, domestic and global mandate
Benchmark	RBA cash rate
Management fee	1.00%
Performance fee	20% (plus GST) of performance above the benchmark
Market cap	\$86.9m
Listing date	18 July 2013

### Share price

As at 22/08/2017 \$1.00

### NTA at 31/07/2017

Pre-tax NTA \$1.00  
 Post-tax NTA \$1.01

### Share price premium/discount to NTA

Pre-tax NTA 0%  
 Post-tax -1%  
 1-yr average -4%

### 12-month historical

Dividend yield 6.5%  
 Gross dividend yield 7.6%

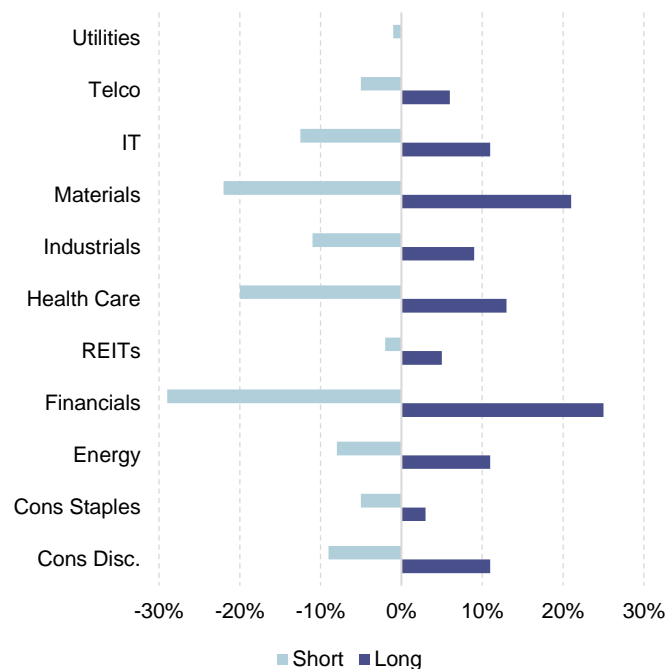
Source: Wilsons, company data, IRESS  
 \*NTA performance is exclusive of dividends paid. Total return is share price and dividends paid.

### Fund description

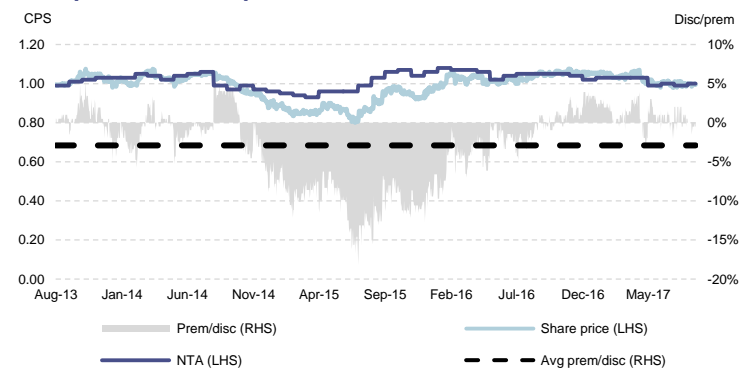
In a market-neutral structure, returns are derived from the difference in performance between a long and a short portfolio of shares. As both portfolios are of equal size, the fund is fully hedged, retaining little or no net exposure to the share market. Irrespective of whether the portfolios are rising or falling, a positive return is achieved when the long portfolio outperforms the short. In this way, returns from a market neutral strategy will have no correlation with the performance of the broader share market, reflecting instead the investment manager's success in selecting the right securities.

While the share market is generally efficient in valuing companies, there will always be a select group of companies that are mispriced at any given point in time. Watermark's investment strategy allows investors to benefit from its success in identifying "strong" companies to invest in and "weaker" companies to sell short, without being fully exposed to the volatility and risks of the share market.

### Sector exposure



### Share price and NTA profile



### Portfolio performance\*

Total return			Total return out/under-performance		
6m	1yr	3yr	6m	1yr	3yr
-2%	3%	12%	-3%	1%	10%

Pre-tax NTA performance			Pre-tax NTA out/under-performance		
6m	1yr	3yr	6m	1yr	3yr
-3%	-5%	1%	-4%	-6%	-1%

## International: Antipodes Global Investment Company (APL)

### Key data

Investment style	Long/short, value
Benchmark	MSCI All Country World Net Index in AUD
Management fee	1.10%
Performance fee	15% of net outperformance, subject to a high watermark
Market cap	\$372.6m
Listing date	18 October 2016

### Share price

As at 22/08/2017 \$1.21

### NTA at 31/07/2017

Pre-tax NTA \$1.19  
 Post-tax NTA \$1.15

### Share price premium/discount to NTA

Pre-tax NTA 2%  
 Post-tax 5%  
 1-yr average N/A

### 12-month historical

Dividend yield N/A  
 Gross dividend yield N/A

Source: Wilsons, company data, IRESS  
 \*NTA performance is exclusive of dividends paid. Total return is share price and dividends paid.

### Fund description

Long-short global securities investment portfolio with a currency overlay. The portfolio will aspire to grow wealth over the long term by generating positive returns in excess of the benchmark at below market levels of risk.

The manager seeks to purchase securities in what it considers to be great businesses that are not valued as such and build a high conviction portfolio with a capital preservation focus. Investors should be aware that returns can vary considerably from broad index returns.

Antipodes was formed in March 2015 by Jacob Mitchell with the backing of Pinnacle Investment Management. The portfolio manager, Mr Mitchell, has more than 20 years' investment experience and prior to forming Antipodes was Deputy Chief Investment Officer and Portfolio Manager at Platinum Asset Management.

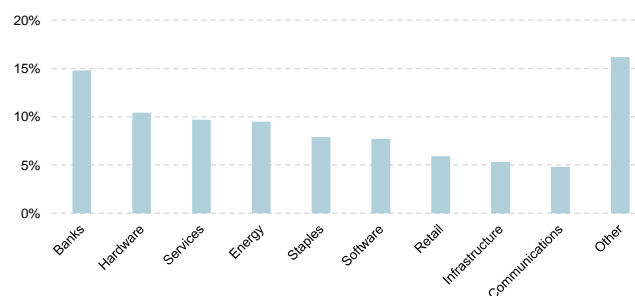
### Portfolio performance

Total return			
	3m	6m	1yr
	3%	11%	-

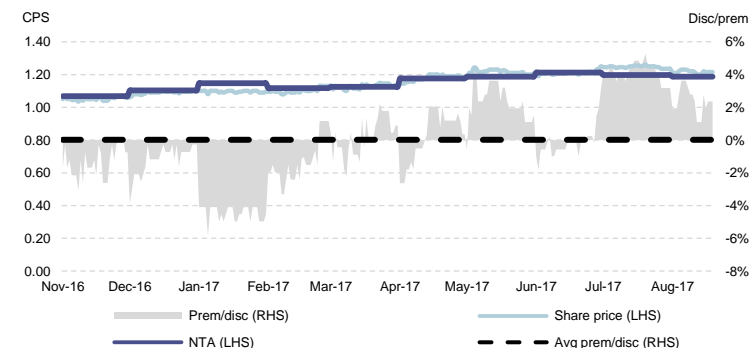
  

Pre-tax NTA performance			
	3m	6m	1yr
	0%	3%	-

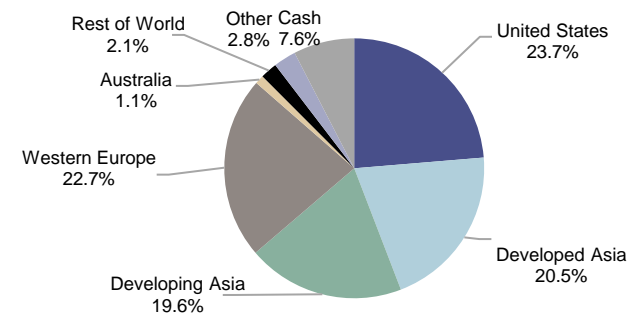
### Sector allocation



### Share price and NTA profile



### Regional allocation





## Alternatives: Blue Sky Alternative (BAF)

### Key data

Investment style	Alternative assets
Benchmark	8% per annum
Management fee	1.12%
Performance fee	17.5% fee on returns above hurdle rate of 8%
Market cap	\$205.4m
Listing date	16 June 2014

### Share price

As at 22/08/2017 \$1.23

### NTA at 31/07/2017

Pre-tax NTA \$1.15  
 Post-tax NTA N/A

### Share price premium/discount to NTA

Pre-tax NTA 7%  
 Post-tax N/A  
 1-yr average 0%

### 12-month historical

Dividend yield 4.1%  
 Gross dividend yield 5.9%

Source: Wilsons, company data, IRESS  
 \*NTA performance is exclusive of dividends paid. Total return is share price and dividends paid.

### Fund description

Blue Sky Alternative is an ASX-listed (ASX:BLA) alternative asset manager with more than \$2bn in assets under management. Blue Sky has built a strong investment track record across private equity, venture capital, hedge funds, private real estate and real assets (primarily water and water infrastructure) of 16.7% per annum compounding (net of fees).

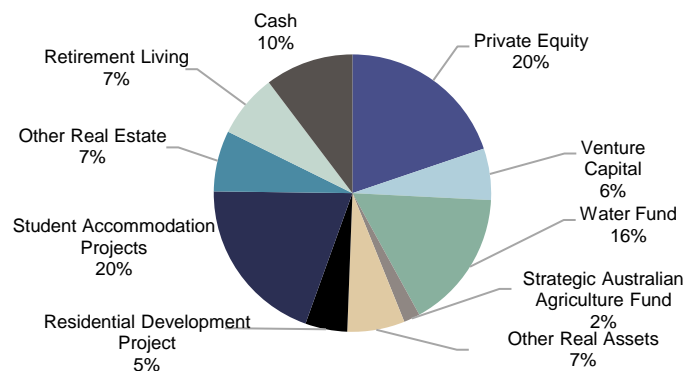
The Fund Limited is mandated to invest in a diversified portfolio of alternative assets, including: 1) private equity and venture capital, 2) real assets, 3) private real estate, and 4) hedge funds.

### Portfolio performance\*

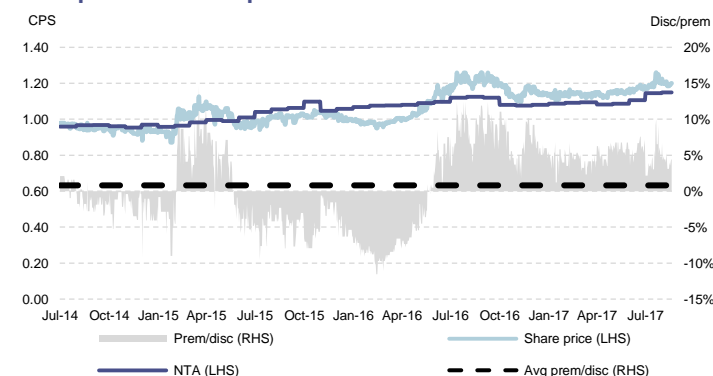
	Total return		
	3m	6m	1yr
	7%	7%	4%

	Pre-tax NTA performance		
	3m	6m	1yr
	6%	6%	2%

### Sector allocation



### Share price and NTA profile



### Top holdings as at 31 July 2017

Not disclosed



## LIC key metrics

Company	ASX code	Investment focus	Listing date	Mcap (\$Am)	Last price \$A	Pre-tax NTA \$A	Pre-tax NTA prem/disc	3yr avg prem/disc	Post-tax NTA \$A	Post-tax NTA prem/disc	Diluted NTA \$A	Diluted discount/premium	Options exercise price \$A	Options expiry date	Dividend yield	Gross dividend yield	Mgmt fee	Perf fee	
<b>Australian Equities</b>																			
Aberdeen Leaders	ALR	Large Cap	25-Aug-97	68	1.16	1.24	-7%	-4%	1.19	-3%					4.3%	6.2%	2.40%	No	
AFIC	AFI	Large Cap	01-Jan-36	6939	6.11	5.87	4%	3%	5.06	21%					4.1%	5.8%	0.18%	No	
Aust Gov Masters Index Funds	AQF	Large Cap	10-Feb-10	50	1.90	1.95	-3%	-1%	1.83	4%					4.1%	5.8%	0.49%	No	
Argo Inv	ARG	Large Cap	01-Jan-47	5560	7.99	7.71	4%	4%	6.80	18%					3.8%	5.4%	0.18%	No	
Aust United Inv	AUI	Large Cap	01-Jan-74	1048	8.49	8.58	-1%	-6%	7.46	14%					4.0%	5.7%	0.13%	No	
Arowana Aust Value Opps Fund	AWQ	Large Cap	05-Jan-15	69	0.92	1.05	-12%	-3%	1.03	-11%					4.1%	4.1%	1.00%	Yes	
Century Aust Inv	CYA	Large Cap	08-Apr-04	89	0.95	0.94	1%	-7%	0.99	-4%					3.8%	5.4%	1.08%	No	
Djerriwarrah Inv	DJW	Large Cap	28-Jun-95	779	3.83	3.24	18%	27%	3.26	17%					6.7%	9.6%	0.39%	No	
Milton Corp	MLT	Large Cap	30-Jan-62	2895	4.61	4.54	2%	1%	4.00	15%					4.2%	6.0%	0.14%	No	
Plato Income Maximiser	PL8	Large Cap	05-May-17	317	1.11	1.03	7%		1.04	6%							0.80%	No	
AMCIL	AMH	Large/Medium Cap	10-Feb-00	226	0.94	0.94	-1%	-2%	0.88	6%			29-Apr-19		4.0%	5.7%	0.77%	No	
BKI Inv Co	BKI	Large/Medium Cap	12-Dec-03	1017	1.72	1.61	7%	1%	1.52	13%					4.4%	6.3%	0.19%	No	
Carlton Inv	CIN	Large/Medium Cap	28-Feb-71	844	32.26	36.36	-11%	-11%	30.21	7%					3.8%	5.4%	0.10%	No	
Clime Capital	CAM	Large/Medium Cap	03-Feb-01	78	0.88	0.87	1%	-8%	0.87	1%					5.6%	8.0%	1.00%	Yes	
CBG Capital Limited	CBC	Large/Medium Cap	19-Dec-14	23	0.91	0.97	-7%		0.97	-6%					3.4%	4.9%	1.00%	Yes	
Diversified United Inv	DUI	Large/Medium Cap	19-Dec-91	806	3.80	3.98	-5%	-7%	3.46	10%					3.6%	5.2%	0.17%	No	
Flagship Inv	FSI	Large/Medium Cap	20-Dec-00	40	1.57	1.80	-13%	-15%	1.72	-9%					4.6%	6.6%	No Fee	Yes	
Perpetual Inv Co	PIC	Large/Medium Cap	18-Dec-14	266	1.06	1.11	-4%	-4%	1.10	-3%					2.6%	3.7%	1.00%	No	
QV Equities	QVE	Large/Medium Cap	22-Aug-14	364	1.36	1.19	14%	0%	1.15	18%					2.5%	3.5%	1.00%	No	
WAM Leaders	WLE	Large/Medium Cap	12-Aug-99	465	1.12	1.16	-4%		1.15	-3%	1.14	-2%	1.10	17-Nov-17			1.00%	Yes	
Whitefield	WHF	Large/Medium Cap	02-Aug-71	393	4.53	4.86	-7%	-7%	4.47	1%							0.35%	No	
<b>Mcap weighted average</b>							3%	2%	16%	0%					4%	5%			
<b>Simple average</b>							-1%	-2%	5%	-2%					4%	6%			
Acorn Capital Inv Fund	ACQ	Medium/Small Cap	01-May-14	46	0.97	1.10	-12%	-13%	1.07	-9%					1.9%	2.7%	0.95%	Yes	
Contango Income Generator	CIE	Medium/Small Cap	14-Aug-15	80	1.00	1.02	-2%	-1%	1.01	-1%	1.01	-2%	1.00	30-Mar-18	6.6%	7.8%	0.95%	No	
Mirrabooka Inv	MIR	Medium/Small Cap	28-Jun-01	435	2.65	2.27	17%	13%	2.07	28%					5.5%	7.8%	0.70%	No	
Ozgrowth	OZG	Medium/Small Cap	02-Jan-08	57	0.16	0.19	-17%	-15%	0.19	-15%	0.19	-16%	0.18	31-Aug-17	3.1%	4.5%	1.00%	Yes	
WAM Capital	WAM	Medium/Small Cap	12-Aug-03	1558	2.47	1.96	26%	10%	1.93	28%					5.9%	8.4%	1.00%	Yes	
WAM Research	WAX	Medium/Small Cap	19-Aug-13	295	1.60	1.22	31%	9%	1.22	31%					5.3%	7.5%	1.00%	Yes	
Westoz Inv Co	WIC	Medium/Small Cap	16-Sep-09	124	0.99	1.08	-8%	-11%	1.06	-7%	1.07	-8%	1.05	31-Aug-17	6.3%	9.1%	1.28%	Yes	
8lp Emerging Companies Limited	8EC	Small Cap	01-Dec-15	38	0.90	1.06	-15%		1.04	-14%							1.25%	Yes	
Contango MicroCap	CTN	Small Cap	25-Mar-14	158	0.94	1.00	-6%	-10%	1.01	-7%					6.7%	7.9%	1.25%	Yes	
Glennon Small Cos	GC1	Small Cap	21-Aug-15	42	0.94	0.99	-5%	-2%	0.98	-4%					4.2%	6.0%	1.00%	Yes	
Mercantile Inv Co	MVT	Small Cap	26-Aug-08	43	0.15	0.18	-17%	-15%	0.16	-8%									
NAOS Absolute Opps Co	NAC	Small Cap	12-Nov-14	54	1.05	1.09	-4%		1.07	-2%					4.7%	6.7%	1.75%	Yes	
NAOS Emerging Opps Co	NCC	Small Cap	26-Feb-13	85	1.38	1.33	4%		1.27	9%					4.8%	6.8%	1.25%	Yes	
Sandon Capital Inv	SNC	Small Cap	23-Dec-13	47	0.97	1.00	-3%		0.97	0%					5.0%	7.2%	1.25%	Yes	
<b>Mcap weighted average</b>							17%	6%	20%	-1%					5.5%	7.7%			
<b>Simple average</b>							-1%	-4%	2%	-9%					5.0%	6.8%			

Source: IRESS, company data. Previous 12-month dividend yield. NTA as at 31/07/2017. Share price as at close 22/08/2017.



Company	ASX code	Investment focus	Listing date	Mcap (\$Am)	Last price \$A	Pre-tax NTA \$A	Pre-tax NTA prem/disc	3yr avg prem/disc	Post-tax NTA \$A	Post-tax NTA prem/disc	Diluted NTA \$A	Diluted discount/premium	Options exercise price \$A	Options expiry date	Dividend yield	Gross dividend yield	Mgmt fee	Perf fee
<b>Absolute Return Funds</b>																		
Absolute Equity Performance Fund	AEG	Absolute Return	16-Dec-15	102	1.13	1.10	3%		1.12	1%	1.10	3%	1.10	16-Nov-17			1.50%	Yes
Ironbark Capital	IBC	Absolute Return	02-Apr-87	70	0.51	0.54	-6%		0.53	-5%					2.4%	3.4%	0.65%	Yes
Katana Capital	KAT	Absolute Return	23-Dec-05	32	0.71	0.86	-18%	-7%	0.83	-15%					8.2%	11.7%	1.25%	Yes
Thorney Opps	TOP	Absolute Return	22-Mar-00	119	0.69	0.78	-12%	-4%	0.73						1.67%	2.4%	0.75%	Yes
Aust Leaders Fund	ALF	Long/Short	10-Feb-04	339	1.28	1.26	1%	9%	1.27	0%					8.0%	11.5%	1.50%	Yes
Cadence Capital	CDM	Long/Short	05-Dec-06	358	1.28	1.17	9%	6%	1.25	3%					6.9%	9.9%	1.00%	Yes
Monash Absolute Investment Co	MA1	Long/Short	12-Apr-16	40	0.79	0.88	-10%		0.92		0.94	-16%	1.10	28-Sep-17			1.50%	Yes
WAM Active	WAA	Long/Short	11-Jan-08	44	1.10	1.06	3%	4%	1.06	3%					4.4%	6.3%	1.00%	Yes
Watermark Market Neutral Fund	WMK	Market Neutral	18-Jul-13	87	1.00	1.00	0%	-4%	1.01	-1%					6.5%	7.7%	1.00%	Yes
<b>Mcap weighted average</b>								1%	1%	0%		0%			5.5%	8.9%		
<b>Simple average</b>								-3%	1%	-2%		-7%			5.4%	7.5%		
<b>International Equities</b>																		
Asian MastersFund	AUF	Asia	04-Dec-07	184	1.32	1.30	2%	1%	1.20	10%					1.6%	2.2%	1.00%	Yes
Ellerston Asian Inv	EAI	Asia	15-Sep-15	105	0.94	1.07	-12%	-4%	1.05	-10%	1.04	-10%	1.00	28-Feb-19			0.95%	Yes
PM Capital Asian Opps Fund	PAF	Asia	22-May-14	62	1.12	1.22	-9%	-9%	1.15	-3%					2.3%	3.2%	1.00%	Yes
Platinum Asia Inv	PAI	Asia	21-Sep-15	375	1.08	1.10	-2%	0%	1.08	0%	1.05	2%	1.00				1.10%	Yes
Emerging Markets Masters Fund	EMF	Emerging Markets	11-Oct-12	184	1.91	1.85	3%	3%	0.00						3.1%	3.1%	1.08%	No
Argo Global Listed Infrastructure	ALI	Global	03-Jul-15	253	1.77	2.03	-13%	-3%	2.02	-13%	2.02	-12%	2.00		1.7%	1.7%	1.20%	No
Antipodes Global Investment Company	APL	Global	18-Oct-16	372	1.21	1.19	2%		1.15	5%	1.15	5%	1.10	15-Oct-18			1.10%	Yes
Ellerston Global Inv	EGL	Global	20-Oct-14	77	1.01	1.16	-13%	-2%	1.15	-12%	1.11	-9%	1.00	10-Apr-18	2.0%	2.8%	0.75%	Yes
Future Generation Global Inv Co	FGG	Global	10-Sep-15	313	1.11	1.14	-3%	1%	1.12	-2%	1.12	-1%	1.10	15-Sep-17	0.9%	1.3%	No Fee	No
Global Value Fund	GVF	Global	21-Jul-14	138	1.14	1.09	5%	-5%	1.08	5%					2.6%	3.8%	1.50%	Yes
Hunter Hall Global Value	HHV	Global	19-Mar-04	284	1.18	1.17	1%	-11%	1.17	0%					5.6%	8.0%	1.77%	Yes
Magellan Flagship Fund	MFF	Global	19-Dec-06	960	1.96	2.26	-13%	-6%	1.93	2%	2.14	-8%	1.05	31-Oct-17	1.0%	1.5%	1.25%	Yes
PM Capital Global Opps Fund	PGF	Global	12-Dec-13	384	1.11	1.22	-9%	-9%	1.16	-4%					2.8%	3.9%	1.09%	Yes
Platinum Capital	PMC	Global	29-Jun-94	480	1.77	1.65	7%	9%	1.58	12%					4.3%	6.1%	1.50%	Yes
Templeton Global Growth	TGG	Global	28-May-97	308	1.38	1.47	-7%	-9%	1.42	-3%					3.3%	4.0%	1.00%	No
<b>Mcap weighted average</b>								-5%	-3%	1%		-2%		2.0%	2.7%			
<b>Simple average</b>								-4%	-3%	-1%		-5%		2.6%	3.5%			
<b>Specialist Shares</b>																		
Aust Enhanced Income Fund	AYF	Hybrids	17-Oct-06	20	6.07	6.10	0%		0.00						6.3%	7.0%	0.85%	No
Blue Sky Alternatives Access Fund	BAF	Alternative Assets	16-Jun-14	205	1.23	1.15	7%	0%	0.00						4.15%	5.9%	1.12%	Yes
Balidor Technology Inv	BTI	Internet-Related Co's	21-Nov-14	101	0.86	1.07	-20%	-10%	1.03	-17%							1.75%	Yes
Future Generation Inv Fund	FGX	Fund of Funds	12-Sep-14	385	1.09	1.14	-5%		1.15	-5%					3.6%	5.2%	1.00%	No
Lion Selection Group	LSX	Junior Mining/Exploration	13-Mar-13	44	0.40	0.00		-30%	0.38								0.75%	Yes
<b>Mcap weighted average</b>								-3%	-3%	-5%				3.1%	4.4%			
<b>Simple average</b>								-6%	-13%	-11%				4.7%	6.0%			

Source: IRESS, company data. Previous 12-month dividend yield. NTA as at 31/07/2017. Share price as at close 22/08/2017.



## Outstanding options

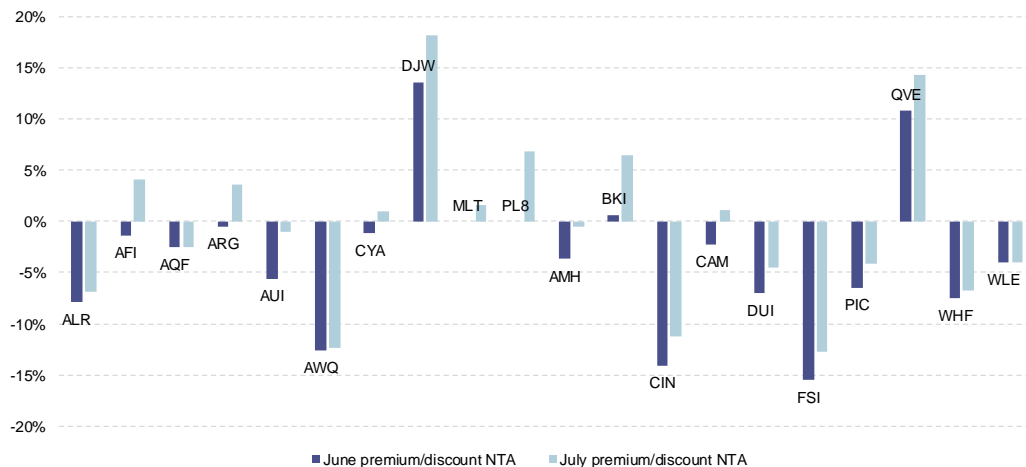
Company	Options ASX code	Shares on issue	Mcap (\$Am)	Last price \$A (options)	Last price \$A	Options exercise price \$A	Pre-tax NTA \$A	Potential raising \$A	Options expiry date
<b>Australian Equities</b>									
WAM Leaders	WLEO	418,240,581	466	0.01	1.12	1.10	1.16	\$328,759,268	17-Nov-17
Contango Income Generator	CIEO	81,150,494	80	0.00	0.98	1.00	1.02	\$33,887,014	30-Mar-18
Ozgrowth	OZGOB	356,957,040	57	0.00	0.16	0.18	0.19	\$6,458,076	31-Aug-17
Plato Income Maximiser	PL8O	296,278,408	311	0.01	1.07	1.10	1.03	\$325,884,248	29-Apr-19
Westoz Inv Co	WICOB	129,005,768	124	0.00	0.95	1.05	1.08	\$13,526,805	31-Aug-17
<b>Absolute Return Funds</b>									
Absolute Equity Performance Fund	AEGO	93,037,119	102	0.02	1.11	1.10	1.10	\$76,875,498	16-Nov-17
Monash Absolute Investment Co	MA1O	52,465,001	41	0.00	0.78	1.10	0.88	\$57,711,500	28-Sep-17
<b>International Equities</b>									
Ellerston Asian Inv	EAIO	112,520,244	105	0.02	0.94	1.00	1.07	\$65,167,917	28-Feb-19
Antipodes Global Investment Company	APLO	307,590,820	371	0.10	1.20	1.10	1.19	\$288,282,598	15-Oct-18
Ellerston Global Inv	EGIO	75,871,924	78	0.05	1.03	1.00	1.16	\$33,599,177	10-Apr-18
Future Generation Global Inv Co	FGGO	284,369,968	313	0.00	1.11	1.10	1.14	\$291,797,457	15-Sep-17
Magellan Flagship Fund	MFFO	489,755,992	962	0.96	1.97	1.05	2.26	\$56,525,615	31-Oct-17
								<b>\$1,578,475,172</b>	

Source: IRESS, company data. NTA as at 31/07/2017. Share price as at close 22/08/2017.

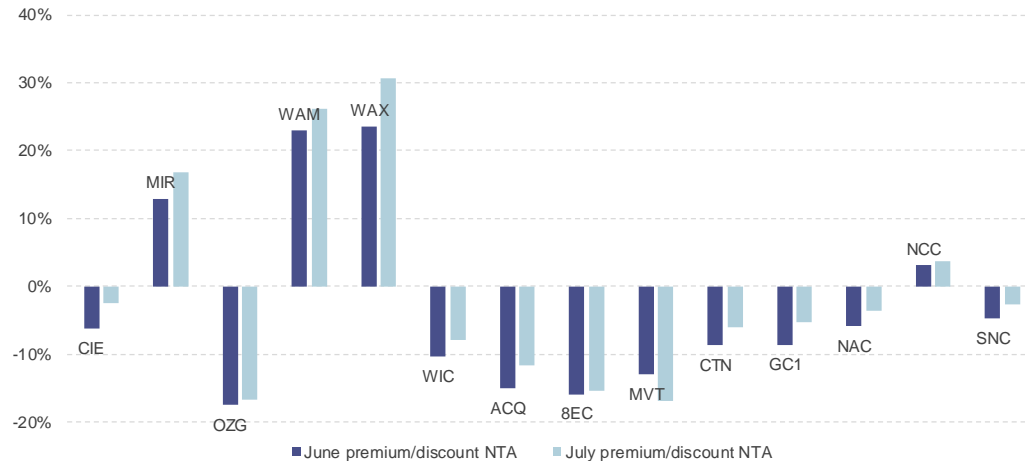


## Monthly change in premium/discount to NTA

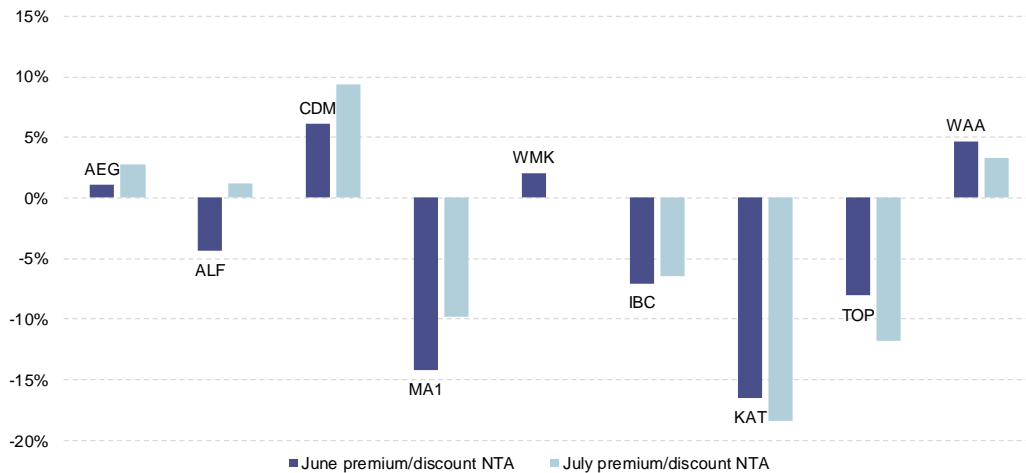
**Domestic equities (large/medium focus): Monthly change in premium/discount to NTA**



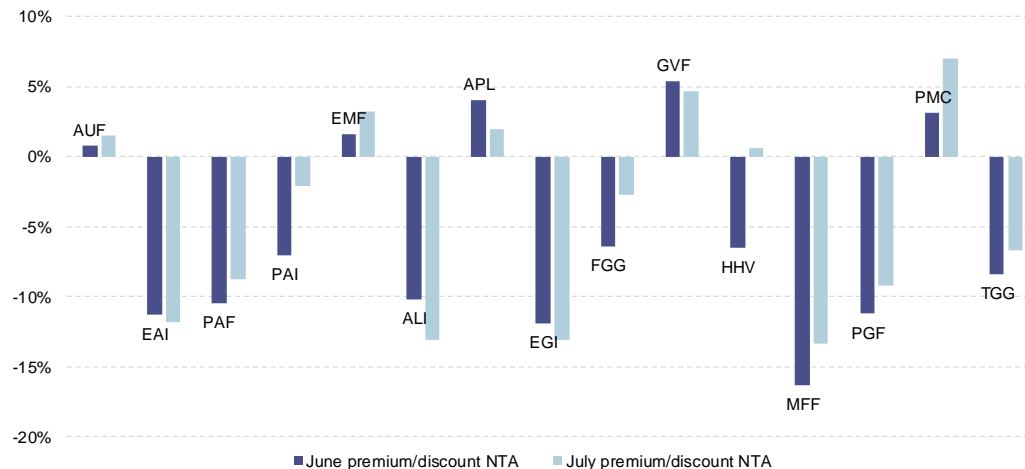
**Domestic equities (medium/small focus): Monthly change in premium/discount to NTA**



**Absolute return: Monthly change in premium/discount to NTA**



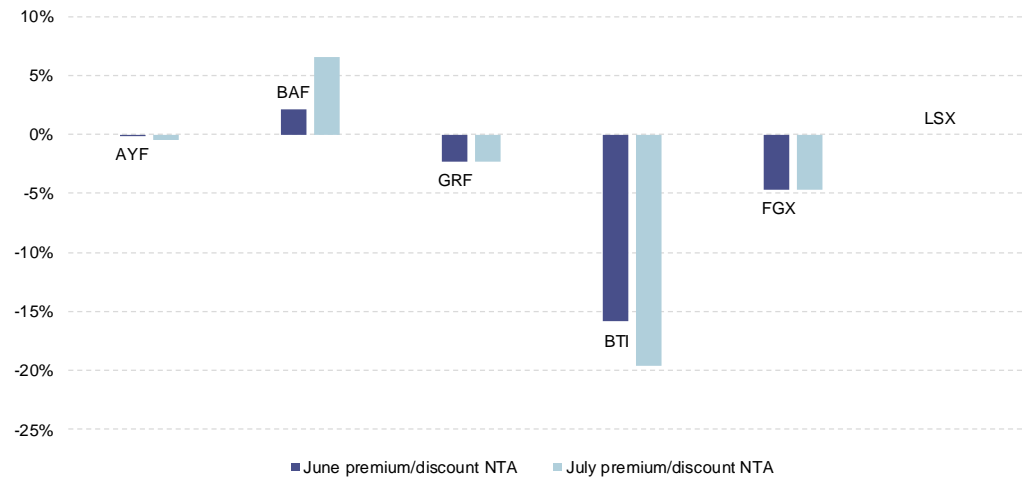
**International equities: Monthly change in premium/discount to NTA**



Source: IRESS, company data



### Specialist: Monthly change in premium/discount to NTA



Source: IRESS, company data

## Performance metrics

Company	ASX code	Total return					Total return out/under-performance					Pre-tax NTA					Pre-tax NTA out/under-performance					Benchmark
		3m	6m	1yr	3yr	5yr	3m	6m	1yr	3yr	5yr	3m	6m	1yr	3yr	5yr	3m	6m	1yr	3yr	5yr	
Australian Equities - Large/Medium		3m	6m	1yr	3yr	5yr	3m	6m	1yr	3yr	5yr	3m	6m	1yr	3yr	5yr	3m	6m	1yr	3yr	5yr	
AFIC	AFI	5%	5%	8%	10%	67%	4%	-3%	-4%	-25%	-1%	-2%	2%	1%	-3%	29%	-3%	-4%	-6%	-8%	-12%	S&P/ASX 200 Accumulation
Aberdeen Leaders	ALR	1%	6%	10%	8%	49%	0%	-2%	-1%	-28%	-19%	-6%	-2%	0%	2%	17%	-6%	-8%	-6%	-3%	-23%	S&P/ASX 200 Accumulation
AMCIL	AMH	4%	-1%	-4%	8%	82%	2%	-8%	-15%	-27%	14%	-1%	2%	-4%	-3%	19%	-1%	-3%	-11%	-8%	-22%	S&P/ASX 200 Accumulation
Aust Gov Masters Index Funds	AQF	-3%	2%	8%	8%	52%	-5%	-5%	-3%	-27%	-16%	-3%	2%	3%	-3%	32%	-3%	-4%	-3%	-7%	-9%	S&P/ASX 200 Accumulation
Argo Inv	ARG	5%	7%	11%	15%	79%	3%	0%	0%	-20%	11%	-3%	-1%	3%	1%	35%	-3%	-6%	-3%	-3%	-5%	S&P/ASX 200 Accumulation
Aust United Inv	AUI	4%	12%	20%	13%	81%	3%	5%	9%	-23%	13%	-3%	3%	6%	-4%	31%	-3%	-2%	-1%	-9%	-10%	S&P/ASX 200 Accumulation
Arowana Aust Val Opps Fund	AWQ	-2%	-1%	-4%			-4%	-9%	-15%			6%	3%	-9%			6%	-2%	-16%			S&P/ASX 200 Accumulation
BKI Inv Co	BKI	6%	3%	10%	15%	77%	5%	-5%	-1%	-21%	9%	-3%	2%	-2%	-5%	19%	-3%	-3%	-8%	-9%	-22%	S&P/ASX 200 Accumulation
Clime Capital	CAM	1%	1%	19%	6%	33%	0%	-6%	8%	-14%	-40%	-3%	-4%	-3%	-19%	-24%	-3%	-9%	-9%	-24%	-63%	All Ordinaries Accumulation
CBG Capital	CBC	-2%	-2%	8%			-4%	-10%	-4%			0%	0%	0%	0%	0%	0%	-5%	-6%	-4%	-40%	S&P/ASX 200 Accumulation
Carlton Inv	CIN	1%	1%	4%	24%	140%	-1%	-7%	-7%	-12%	71%	-2%	-4%	-1%	17%	65%	-2%	-9%	-8%	13%	24%	S&P/ASX 200 Accumulation
Century Aust Inv	CYA	0%	7%	16%	20%	98%	-1%	-1%	5%	1%	25%	-1%	1%	3%	0%	36%	-2%	-5%	-3%	-4%	-4%	S&P/ASX 300 Accumulation
Djerriwarrh Inv	DJW	6%	3%	1%	-8%	31%	4%	-5%	-10%	-43%	-37%	-2%	3%	-1%	-17%	-3%	-3%	-2%	-8%	-21%	-43%	S&P/ASX 200 Accumulation
Diversified United Inv	DUI	-1%	10%	13%	18%	90%	-2%	3%	2%	-2%	16%	-3%	4%	6%	1%	39%	-4%	-1%	0%	-4%	0%	S&P/ASX 300 Accumulation
Flagship Inv	FSI	-1%	2%	7%	11%	91%	-2%	-5%	-3%	-9%	18%	-2%	3%	-8%	0%	37%	-2%	-2%	-14%	-6%	-2%	All Ordinaries Accumulation
Milton Corp	MLT	3%	5%	10%	13%	77%	2%	-1%	0%	-7%	4%	-3%	0%	4%	1%	33%	-3%	-4%	-1%	-4%	-6%	All Ordinaries Accumulation
Perpetual Inv Co	PIC	4%	8%	16%			2%	1%	5%			-1%	0%	3%			-1%	-5%	-3%			S&P/ASX 300 Accumulation
Plato Income Maximiser	PL8																					S&P/ASX 200 Accumulation
Whitefield	WHF	1%	7%	10%	19%	106%	-1%	-1%	-1%	-17%	38%	-6%	3%	-1%	8%	58%	-6%	-2%	-7%	4%	17%	S&P/ASX 200 Accumulation
Australian Equities - Medium/Small		3m	6m	1yr	3yr	5yr	3m	6m	1yr	3yr	5yr	3m	6m	1yr	3yr	5yr	3m	6m	1yr	3yr	5yr	
8lp Emerging Companies Limited	8EC	-8%	-9%	-7%			-9%	-11%	-11%			0%	0%	0%	0%	0%	-1%	-2%	-4%	-4%	-4%	RBA Cash rate + 200bps
Acorn Capital	ACQ	0%	-4%	4%	7%		1%	-6%	3%	-1%		2%	-7%	-11%	8%		3%	-8%	-12%	0%		S&P/ASX Small Ords Accumulation
Contango Income Generator	CIE	3%	7%	10%			2%	0%	-1%			-2%	1%	-2%			-2%	-4%	-8%			All Ordinaries Accumulation
Contango Microcap	CTN	-4%	-11%	-8%	6%	35%	-3%	-12%	-8%	-2%	30%	0%	-14%	-23%	-21%	-15%	0%	-15%	-23%	-29%	-19%	S&P/ASX Small Ords Accumulation
Glennon Small Companies	GC1	-2%	1%	-4%			-1%	-1%	-4%			2%	-1%	-14%			2%	-3%	-15%			S&P/ASX Small Ords Accumulation
Mirabooka	MIR	7%	-1%	-3%	15%	107%	8%	-3%	-3%	7%	103%	-3%	-1%	-5%	0%	24%	-3%	-2%	-5%	-8%	19%	S&P/ASX Small Ords Accumulation
Mercantile	MVT	-3%	-9%	0%	15%	88%	-5%	-16%	-10%	-4%	14%						0%	-5%	-6%	-5%	-39%	All Ordinaries Accumulation
NAOS Absolute Opps Co	NAC	-4%	-6%	4%			-5%	-8%	0%			0%	-6%	-9%			-1%	-8%	-13%			RBA Cash rate + 250bps
NAOS Emerging Opps Co	NCC	-7%	6%	26%	51%		-7%	4%	26%	44%		5%	-4%	1%	8%		5%	-5%	0%	0%		S&P/ASX Small Ords Accumulation
Ozgrowth	OZG	-3%	-7%	10%	-17%	33%	-4%	-14%	0%	-37%	-40%	-9%	-6%	3%	-21%	-14%	-9%	-11%	-3%	-27%	-53%	All Ordinaries Accumulation
QV Equities	QVE	8%	8%	28%			7%	0%	17%			-1%	1%	2%			-1%	-4%	-4%			S&P/ASX 300 Accumulation
Sandon Capital	SNC	-3%	4%	27%	20%		-2%	3%	26%	12%		0%	-7%	1%	-1%		0%	-9%	0%	-9%		S&P/ASX Small Ords Accumulation
WAM Capital	WAM	4%	7%	18%	49%	115%	3%	0%	7%	29%	42%	3%	-1%	0%	7%	21%	3%	-6%	-6%	2%	-18%	All Ordinaries Accumulation
WAM Research	WAX	5%	7%	18%	67%	176%	4%	0%	8%	48%	103%	1%	-3%	-2%	13%	34%	1%	-8%	-7%	8%	-5%	All Ordinaries Accumulation
WestOz Investment Co.	WIC	8%	-3%	15%	-5%	55%	6%	-10%	4%	-25%	-18%	-3%	-2%	4%	-21%	-19%	-3%	-6%	-2%	-26%	-58%	All Ordinaries Accumulation

Source: IRESS, company data. Performance base date 31/07/2017 and is before management fees have been deducted. NTA performance does not include dividends paid.



Company	ASX code	Total return					Total return out/under-performance					Pre-tax NTA					Pre-tax NTA out/under-performance					Benchmark
		3m	6m	1yr	3yr	5yr	3m	6m	1yr	3yr	5yr	3m	6m	1yr	3yr	5yr	3m	6m	1yr	3yr	5yr	
Aurora Absolute Return Fund	ABW	-26%	-42%	-43%	-52%	-48%	-26%	-46%	-48%	-57%	-48%	-7%	-17%	-26%	-33%	-37%	-7%	-22%	-32%	-39%	-37%	RBA Cash Rate
Aust Leaders Fund	ALF	2%	-8%	-6%	-12%	59%	3%	-9%	-7%	-20%	54%	0%	-2%	-5%	-11%	-2%	1%	-4%	-5%	-19%	-6%	S&P/ASX Small Ords Accumulation
Cadence Capital	CDM	6%	11%	7%	5%	55%	5%	4%	-3%	-15%	-18%	1%	3%	3%	-19%	-13%	1%	-2%	-3%	-24%	-53%	All Ordinaries Accumulation
Ironbark Capital	IBC	3%	4%	15%	5%	37%	1%	0%	7%	-3%	29%	-1%	-2%	-2%	-9%	-3%	-3%	-6%	-10%	-17%	-12%	1YR SWAP +6%
Katana Capital	KAT	-3%	-10%	-5%	-12%	57%	-5%	-17%	-15%	-32%	-16%	0%	1%	-1%	-17%	0%	0%	-4%	-6%	-22%	-39%	All Ordinaries Accumulation
Thorney Opportunities Fund	TOP	1%	0%	12%	58%	99%						6%	6%	20%	66%							N/A
WAM Active	WAA	-2%	-2%	6%	3%	44%	-3%	-9%	-5%	-16%	-29%	-1%	0%	0%	-1%	-2%	-1%	-4%	-6%	-6%	-42%	All Ordinaries Accumulation
Watermark Neutral Fund	WMK	-1%	-2%	3%	12%		-1%	-3%	1%	10%		1%	-3%	-5%	1%		1%	-4%	-6%	-1%		RBA Cash Rate

Source: IRESS, company data. Performance base date 31/07/2017 and is before management fees have been deducted. NTA performance does not include dividends paid.





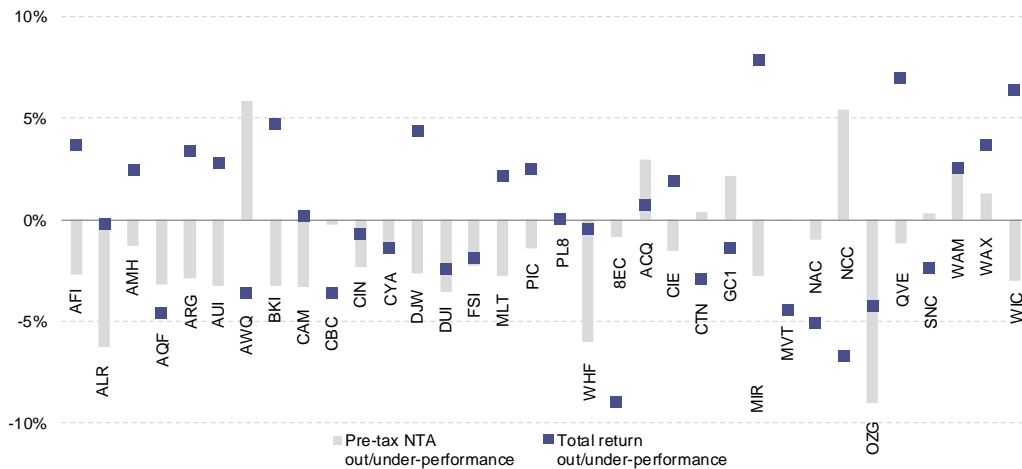
Company	ASX code	Investment focus	Total return					Pre-tax NTA					Benchmark
			3m	6m	1yr	3yr	5yr	3m	6m	1yr	3yr	5yr	
<b>International Equities</b>			<b>3m</b>	<b>6m</b>	<b>1yr</b>	<b>3yr</b>	<b>5yr</b>	<b>3m</b>	<b>6m</b>	<b>1yr</b>	<b>3yr</b>	<b>5yr</b>	
ARGO Infrastructure	ALI	Global	-3%	7%	-5%			-2%	4%	0%			A\$ benchmark 90% FTSE Global Core Infra. 50/50 index & 10% Merrill Lynch Fixed Rate Pref. Sec. index
Antipodes Global Investment Compar	APL	Global	3%	11%				0%	3%				MSCI All Country World Net Index
Ellerston Global Investments	EGI	Global	6%	4%	4%			1%	4%	5%			MSCI World Index Local
Future Generation Global	FGG	Global	6%	4%	7%			-2%	6%	7%			MSCI World Total Return Index, net dividends reinvested, AUD
Global Value Fund	GVF	Global	3%	1%	11%	25%		0%	-4%	0%	11%		BBSW 1yr rate +4%
Hunter Hall Global Value	HHV	Global	3%	1%	-11%	38%	133%	-6%	-7%	-22%	-3%	42%	MSCI World Return, net dividends reinvested, AUD
Magellan Flagship Fund	MFF	Global	5%	8%	9%	39%	157%	-4%	2%	14%	56%	143%	MSCI World (AUD)
PM Capital Global Opportunities Fund	PGF	Global	8%	14%	35%	26%		-1%	7%	22%	30%		MSCI All Country World Net Index
Platinum Capital	PMC	Global	13%	13%	15%	10%	131%	3%	6%	11%	0%	57%	MSCI All Country World TR (AUD)
Templeton Global Growth	TGG	Global	4%	11%	22%	14%	130%	-1%	3%	12%	8%	73%	MSCI World
Asian MastersFund	AUF	Asia	3%	11%	7%	38%	72%	-1%	7%	2%	24%	57%	MSCI Asia Ex Japan
Ellerston Asia Fund	EAI	Asia	6%	10%	13%			3%	11%	11%			MSCI All Country ASIA Ex Japan Net Index AUD
PM Capital Asian Opportunities Fund	PAF	Asia	12%	21%	26%	24%		4%	12%	14%	25%		MSCI AC Asia Index (AUD)
Platinum Asia	PAI	Asia	7%	18%	13%			1%	11%	14%			MSCI AC Asia Ex Japan Index
Emerging Markets Masters Fund	EMF	Emerging Markets	3%	8%	8%	25%		-1%	5%	6%	15%		MSCI Emerging Markets
<b>Specialist</b>			<b>3m</b>	<b>6m</b>	<b>1yr</b>	<b>3yr</b>	<b>5yr</b>	<b>3m</b>	<b>6m</b>	<b>1yr</b>	<b>3yr</b>	<b>5yr</b>	
Aust Enhanced Income Fund	AYF	Hybrids	2%	3%	10%	12%	37%	1%	1%	3%	-8%	-2%	UBS \$A Bank Bill Index
Blue Sky Alternatives Access Fund	BAF	Alternative Assets	7%	7%	4%	37%		6%	6%	2%	19%		8% per annum
Balidor Technology Inv	BTI	Internet-related cos	-8%	-16%	-24%			-4%	-9%	-9%			8% pa compounded annually
Future Generation Inv Fund	FGX	Fund of Funds	-3%	-3%	-2%			0%	0%	-5%			All Ordinaries Accumulation
Lion Selection Group	LSX	Junior Mining/Exploration	-2%	0%	33%	14%		N/A	N/A	N/A	N/A	N/A	ASX Small Resources

Source: IRESS, company data. Performance base date 31/07/2017 and is before management fees have been deducted. NTA performance does not include dividends paid.

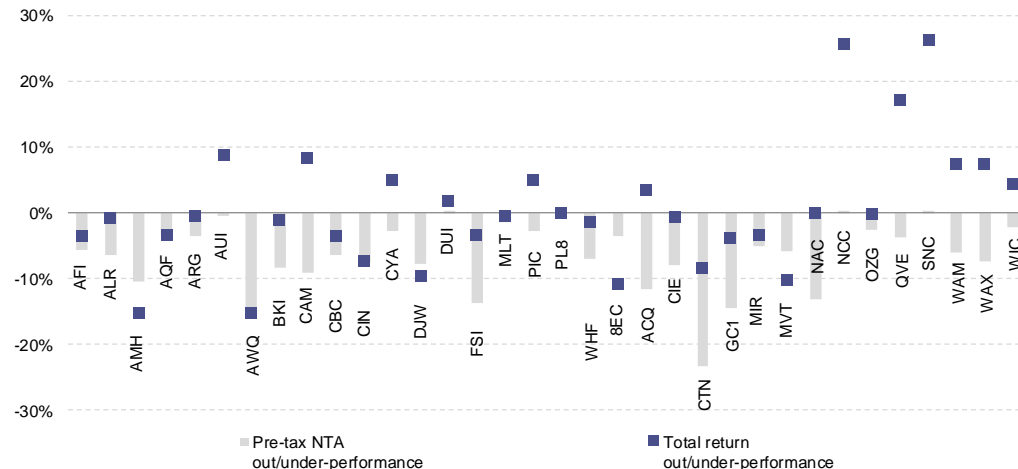


## Pre-tax NTA premium/discount and total return vs benchmark

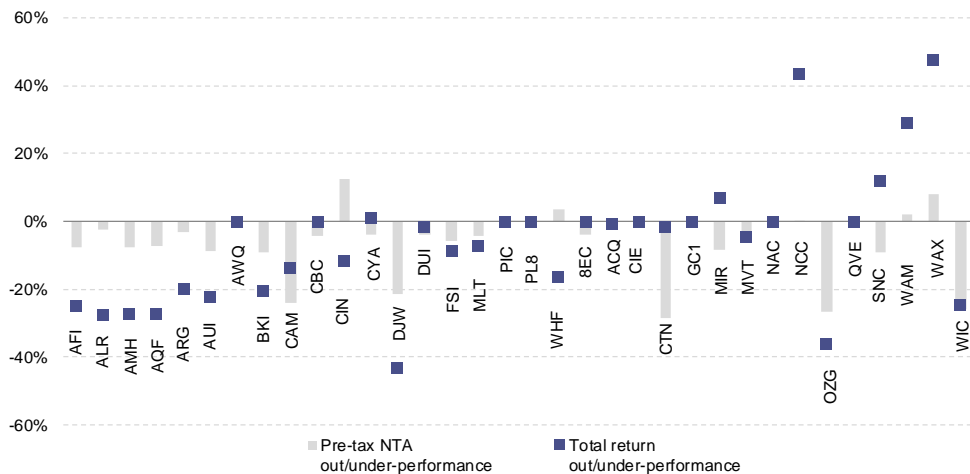
Domestic equities: 3-mth pre-tax NTA prem/disc and total return vs benchmark



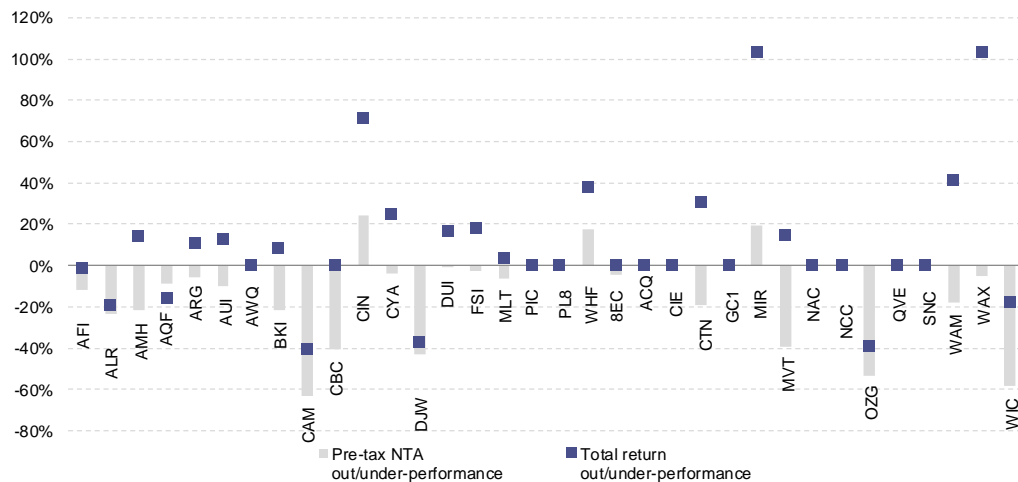
Domestic equities: 1-yr pre-tax NTA prem/disc and total return vs benchmark



Domestic equities: 3-yr pre-tax NTA prem/disc and total return vs benchmark



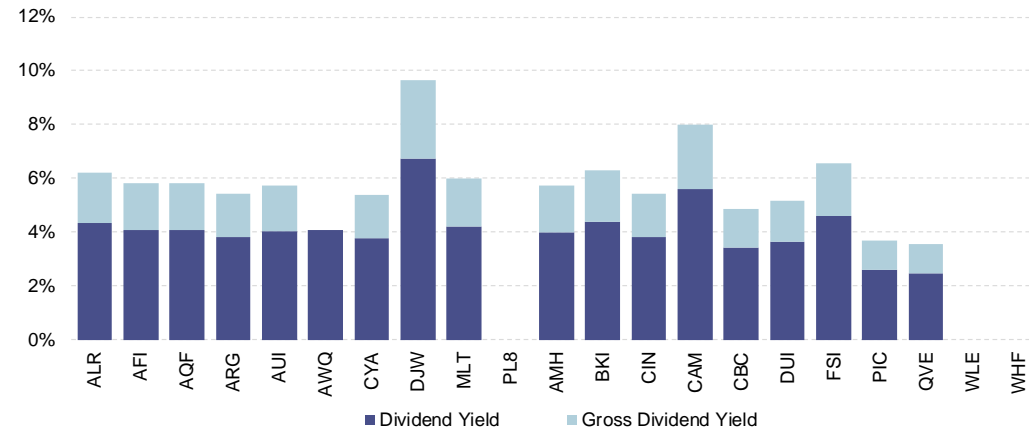
Domestic equities: 5-yr pre-tax NTA prem/disc and total return vs benchmark



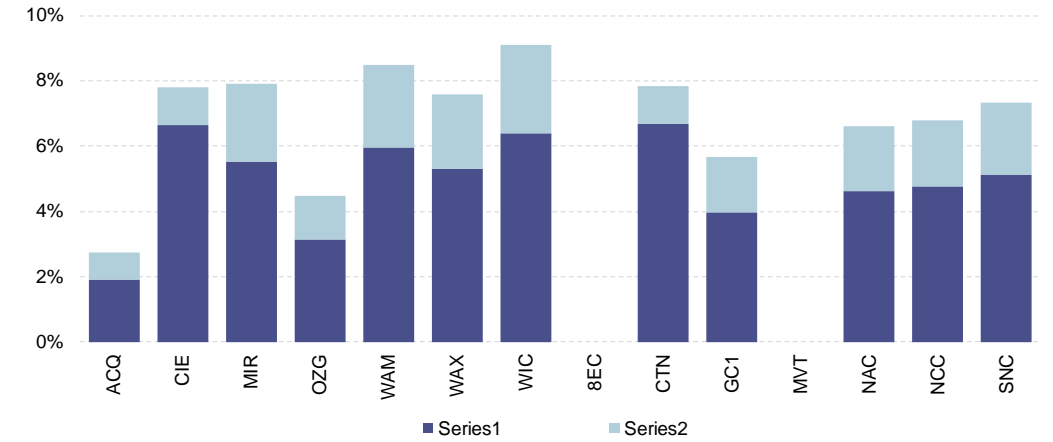
Source: IRESS, company data

## 12-month historical dividend yield

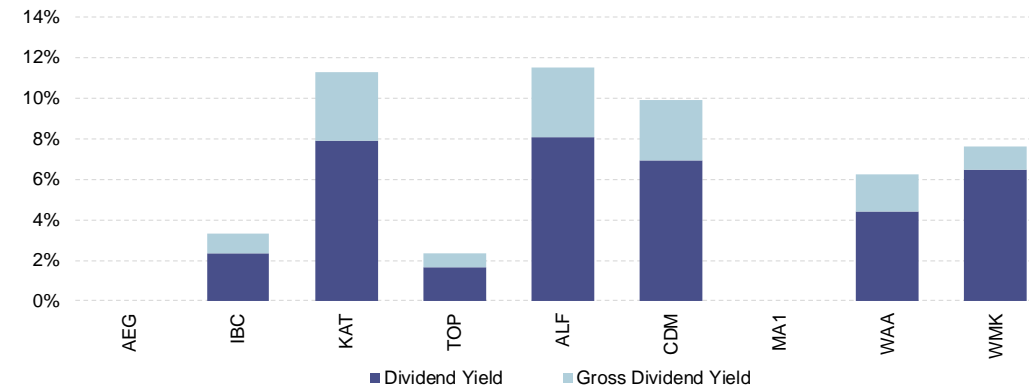
Domestic equities (large/medium focus): 12-month historical dividend yield



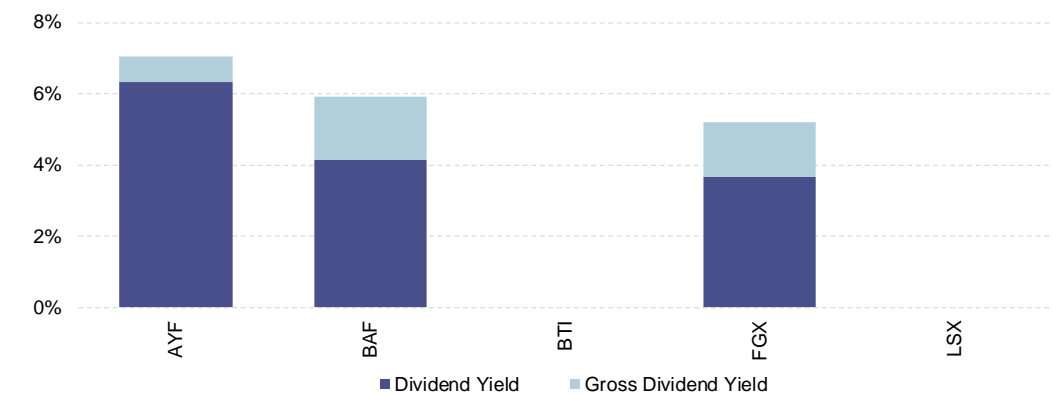
Domestic equities (medium/small focus): 12-month historical dividend yield



Absolute return: 12-month historical dividend yield



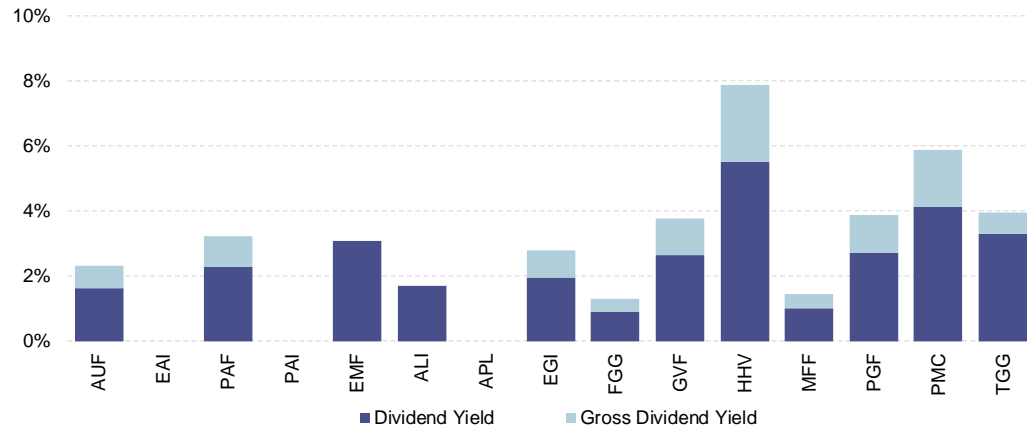
Specialist: 12-month historical dividend yield



Source: IRESS, company data



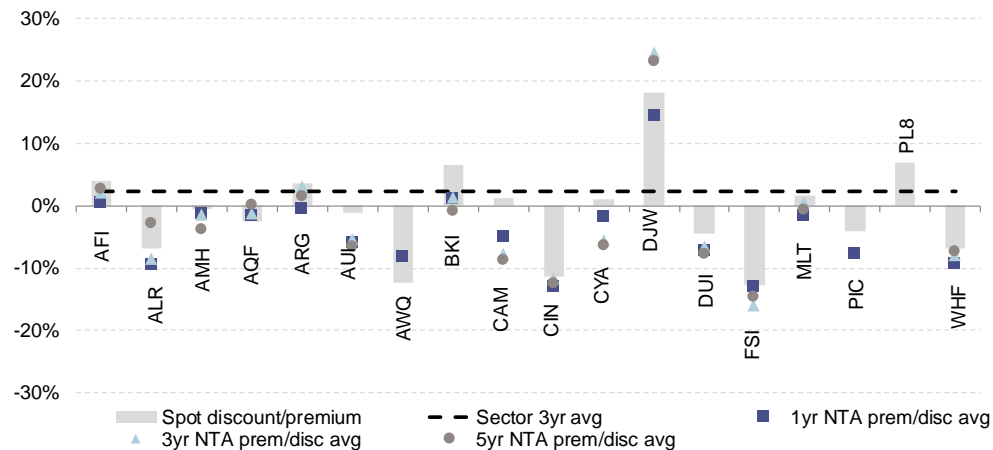
### International equities: 12-month historical dividend yield



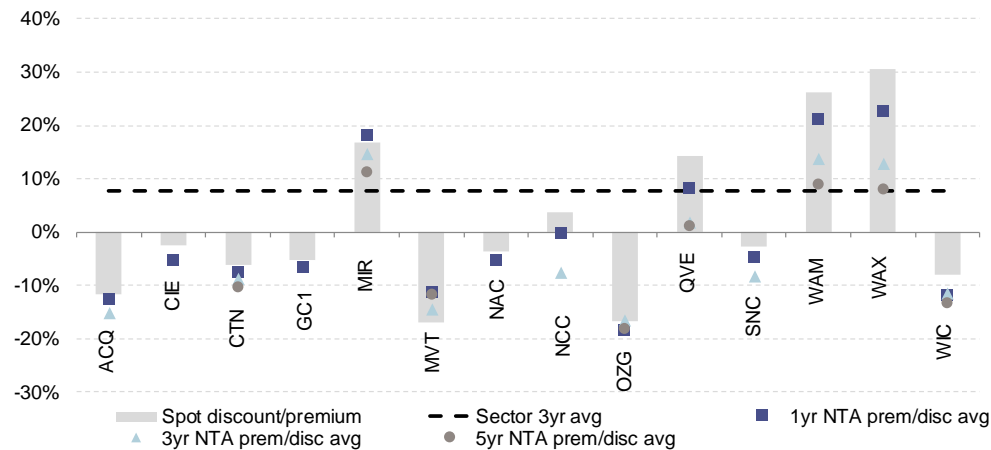
Source: IRESS, company data

## Pre-tax NTA premium/discount vs long-term averages

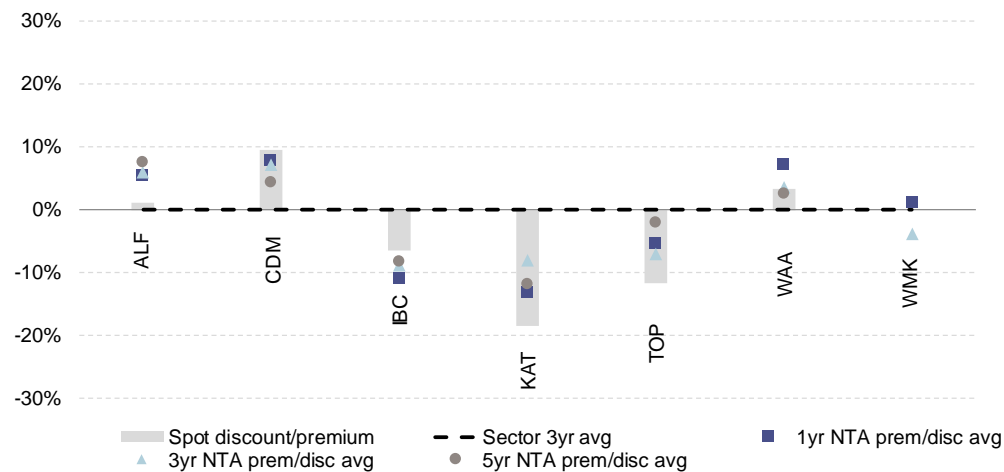
**Domestic (large/medium): NTA prem/disc vs 3-yr, 5-yr and sector average prem/disc**



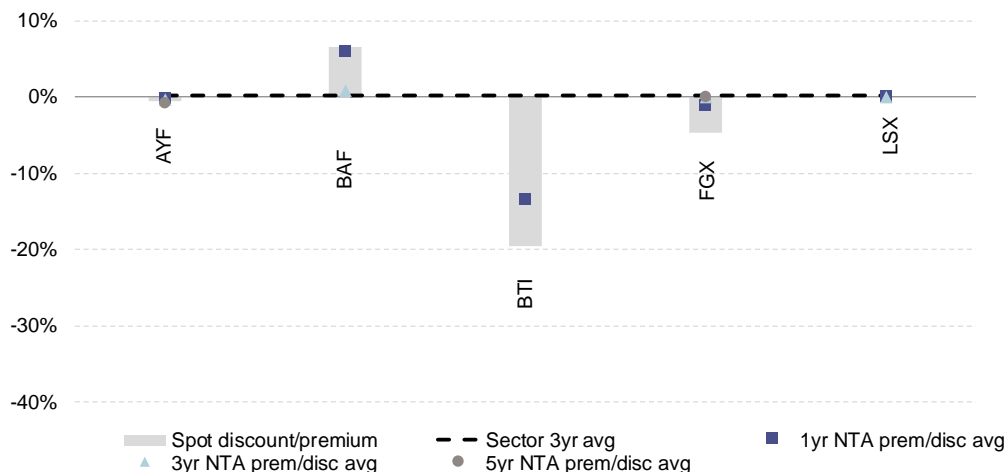
**Domestic (medium/small): NTA prem/disc vs 3-yr, 5-yr and sector average prem/disc**



**Absolute return: NTA prem/disc vs 3-yr, 5-yr and sector average prem/disc**

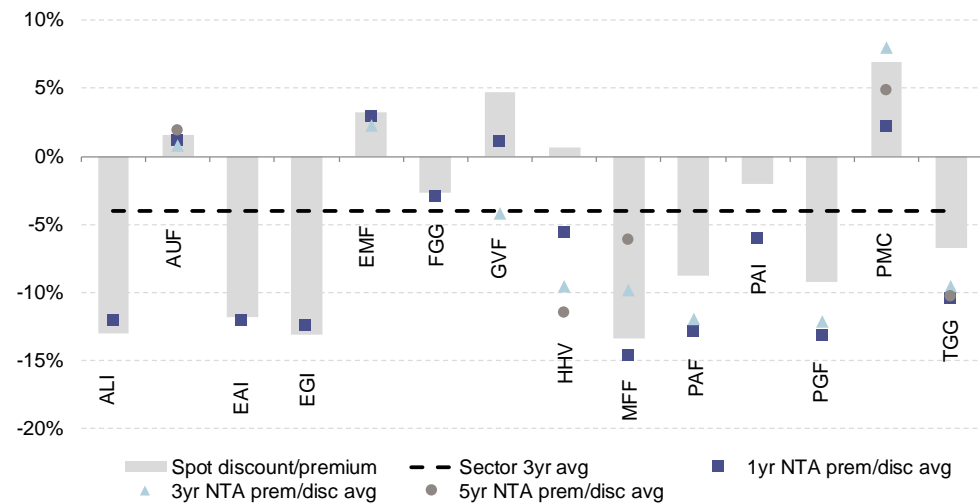


**Specialist: NTA prem/disc vs 3-yr, 5-yr and sector average prem/disc**



Source: IRESS, company data

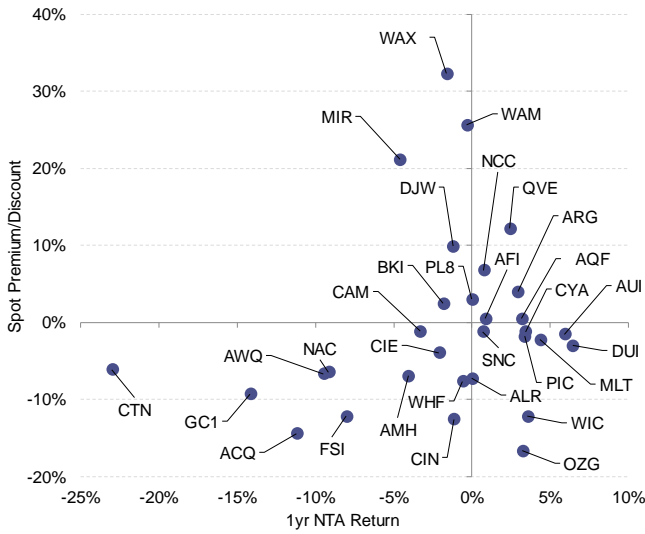
**International: NTA prem/disc vs 3-yr, 5-yr and sector average prem/disc**



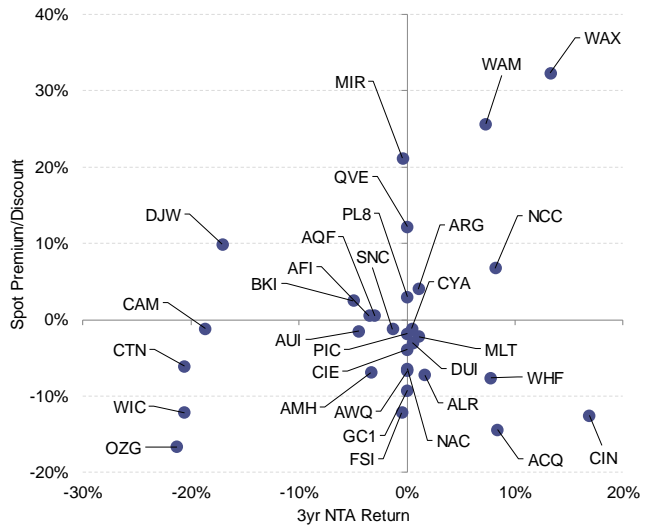
Source: IRESS, company data

# Pre-tax NTA growth vs NTA premium/discount

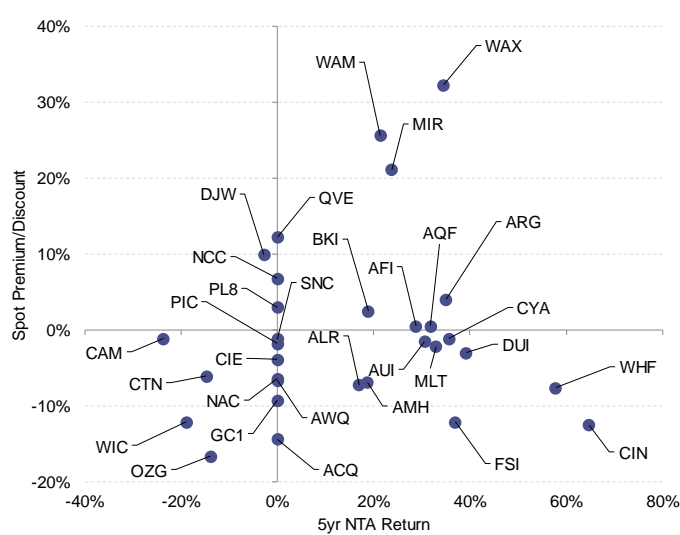
**Domestic: 1-yr pre-tax NTA growth vs NTA prem/disc**



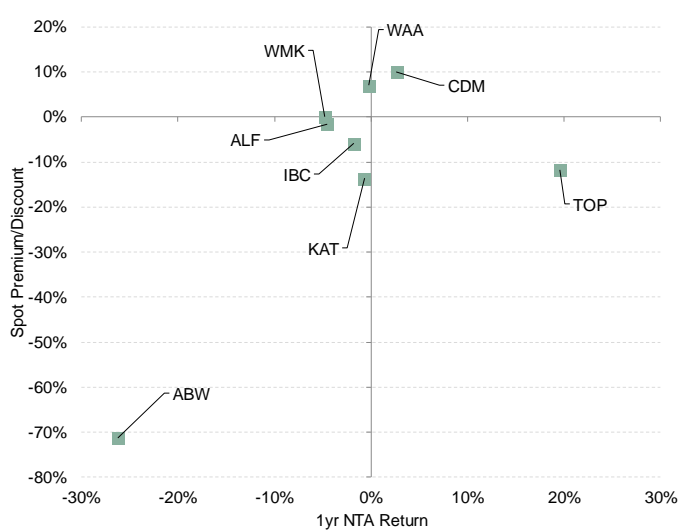
**Domestic: 3-yr pre-tax NTA growth vs NTA prem/disc**



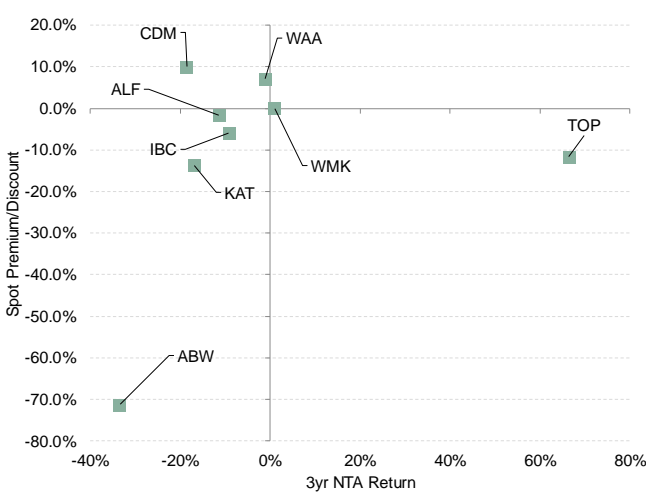
**Domestic: 5-yr pre-tax NTA growth vs NTA prem/disc**



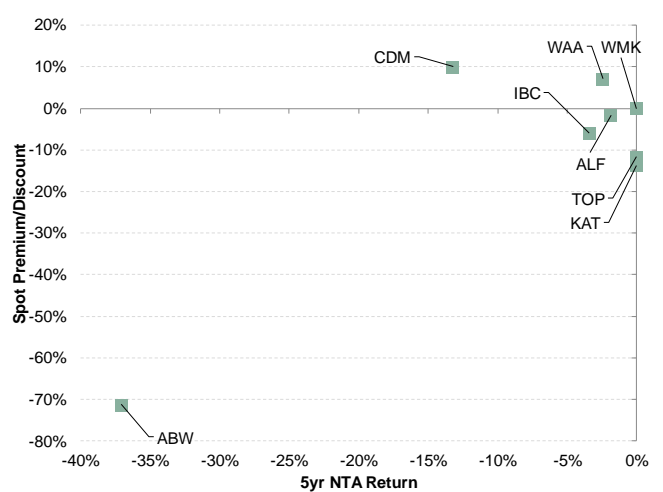
**Absolute: 1-yr pre-tax NTA growth vs NTA prem/disc**



**Absolute: 3-yr pre-tax NTA growth vs NTA prem/disc**



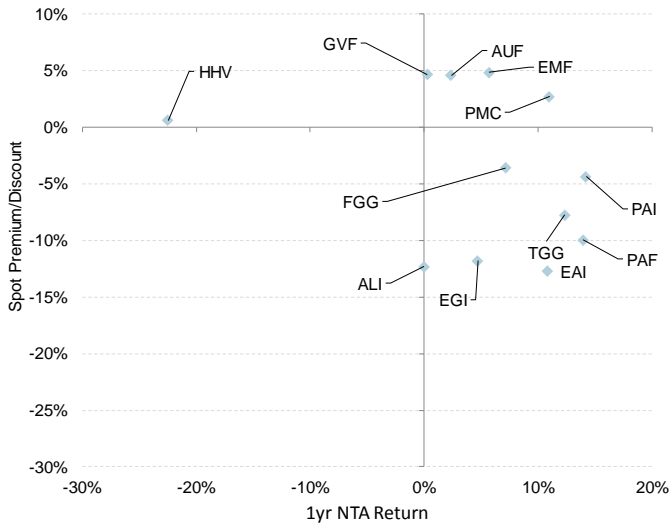
**Absolute: 5-yr pre-tax NTA growth vs NTA prem/disc**



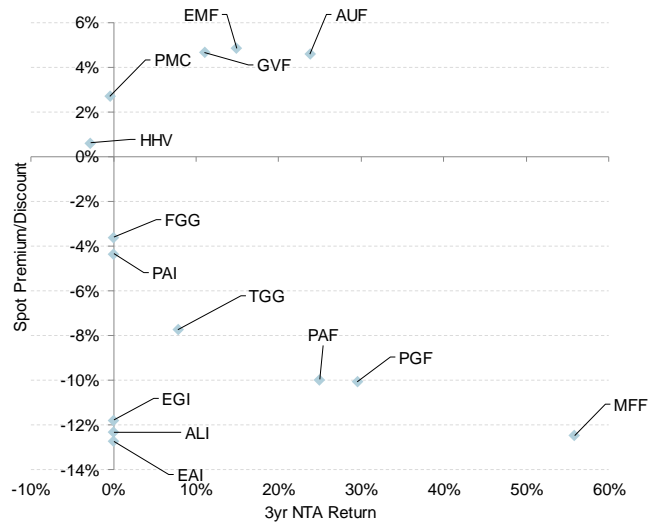
Source: IRESS, company data



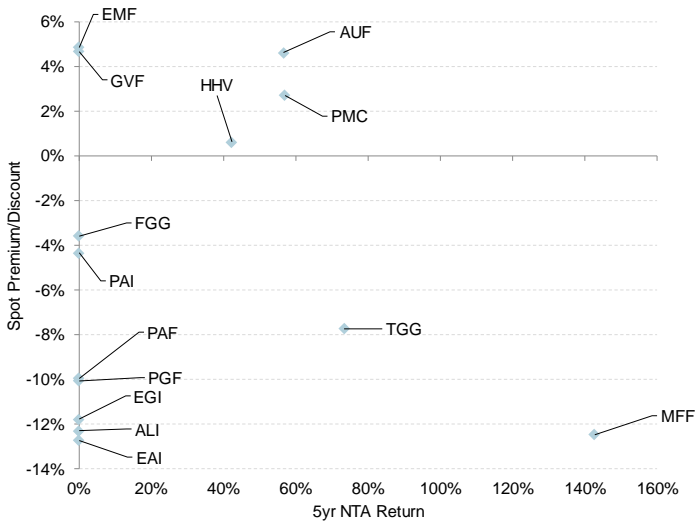
**International: 1-yr pre-tax NTA growth vs NTA prem/disc**



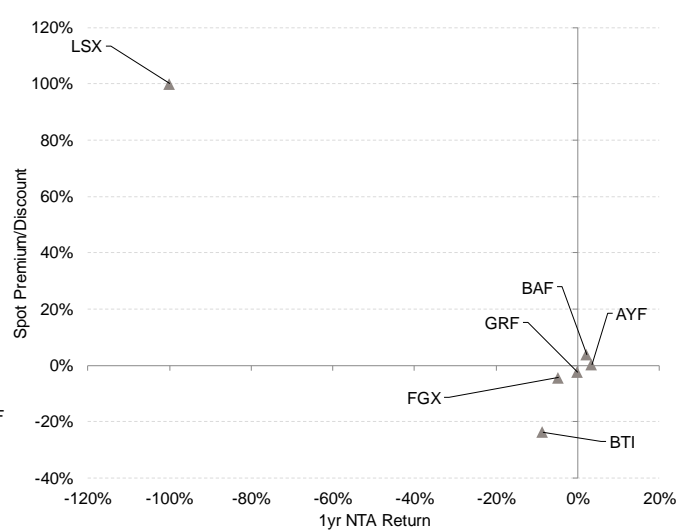
**International: 3-yr pre-tax NTA growth vs NTA prem/disc**



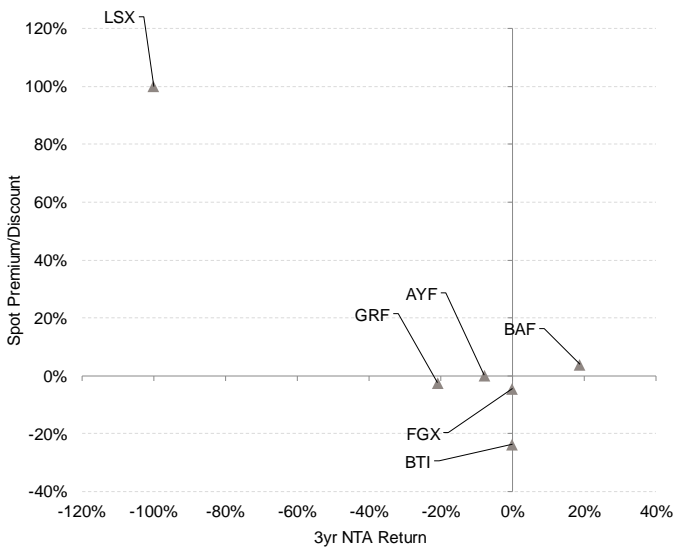
**International: 5-yr pre-tax NTA growth vs NTA prem/disc**



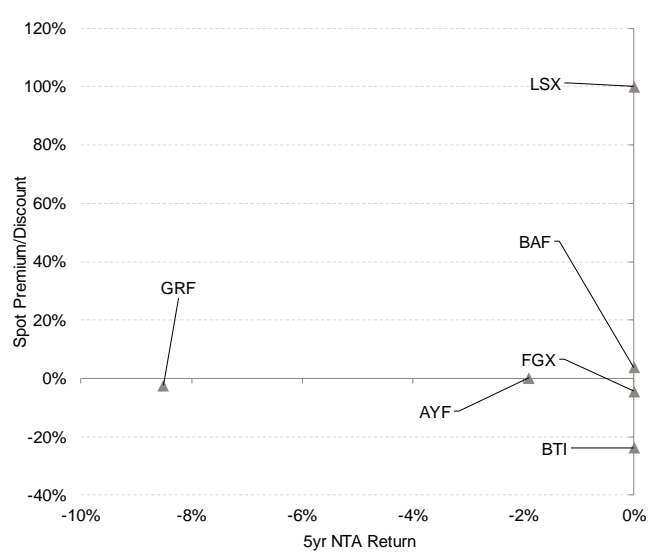
**Specialist: 1-yr pre-tax NTA growth vs NTA prem/disc**



**Specialist: 3-yr pre-tax NTA growth vs NTA prem/disc**



**Specialist: 5-yr pre-tax NTA growth vs NTA prem/disc**



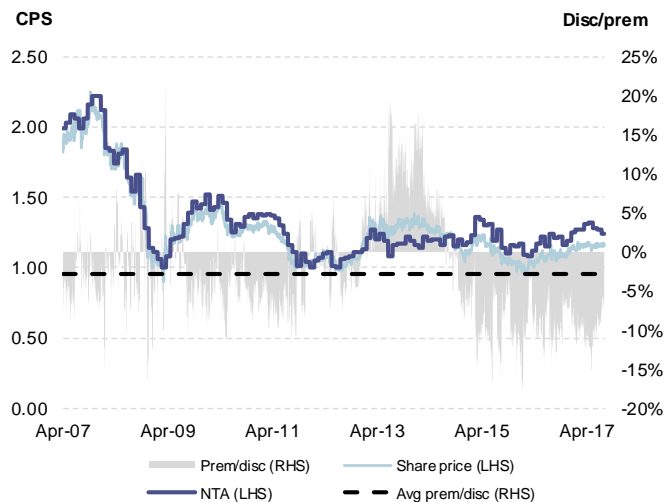
Source: IRESS, company data



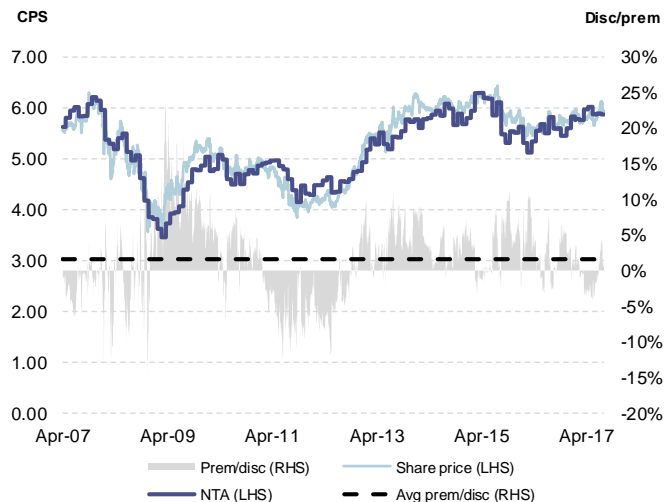


## Domestic LICs: Large/medium cap-focused

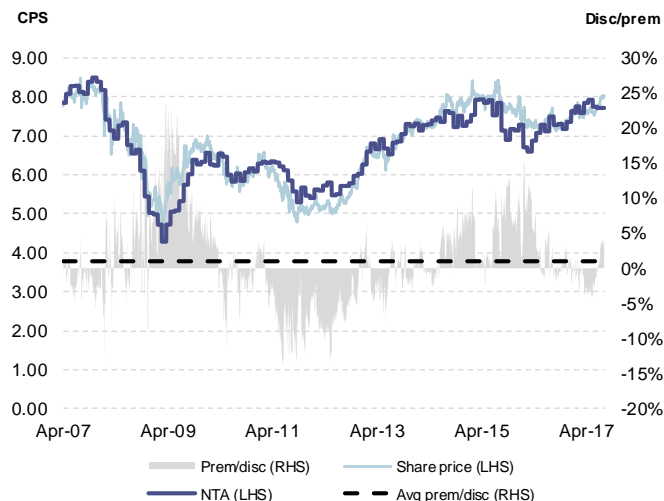
### Aberdeen Leaders - ALR



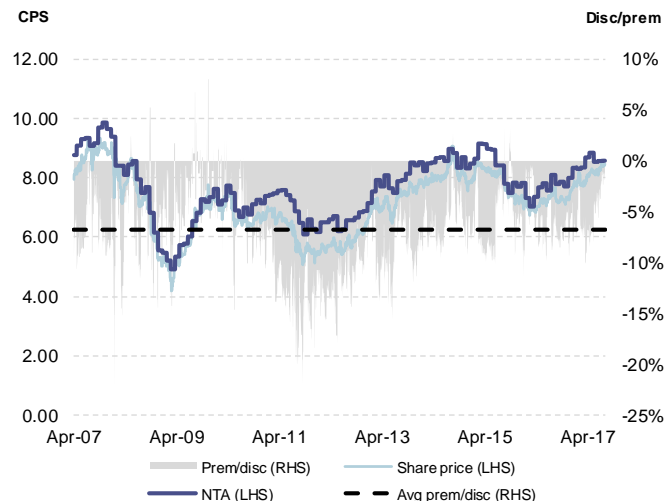
### AFIC - AFI



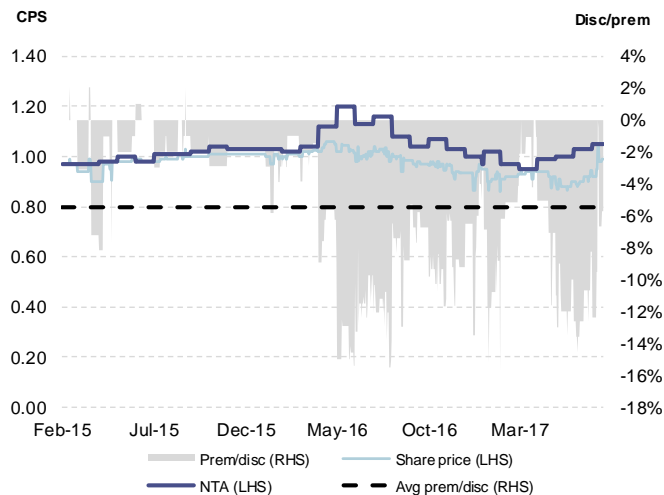
### Argo Investments - ARG



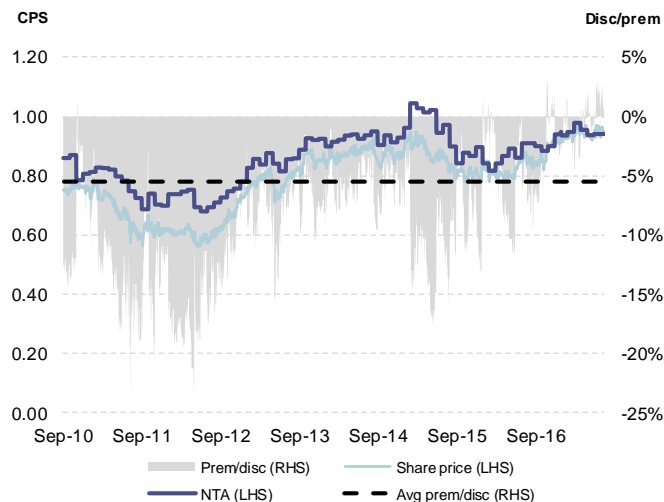
### Australia United Investments - AUI



### Arowana Australia Value Opportunity Fund - AWQ



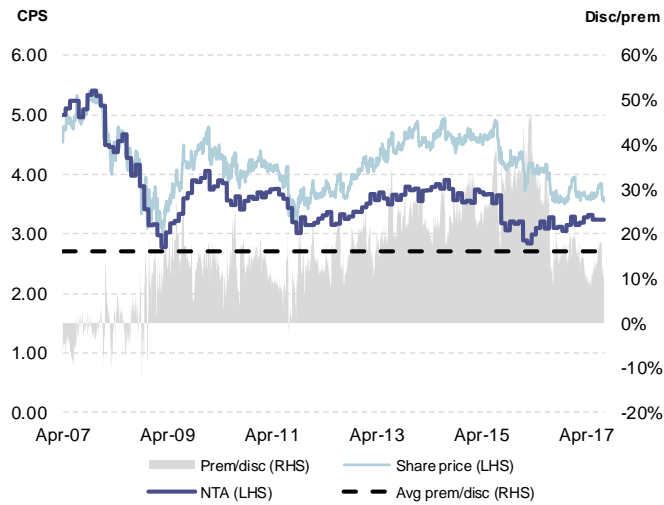
### Century Australia Investments - CYA



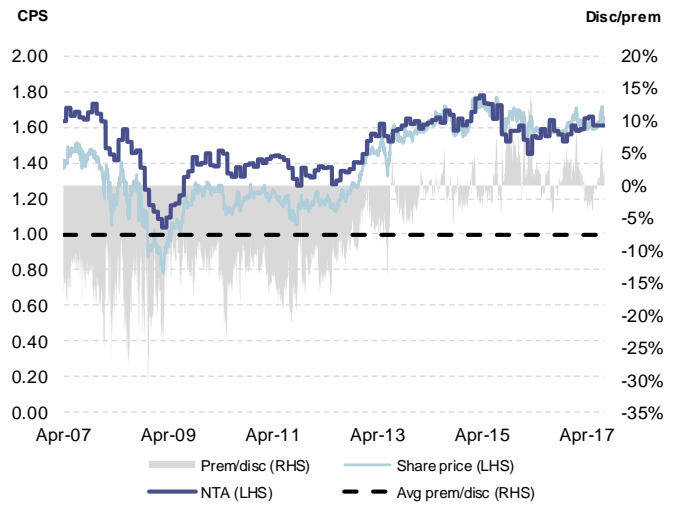
Source: IRESS, company data



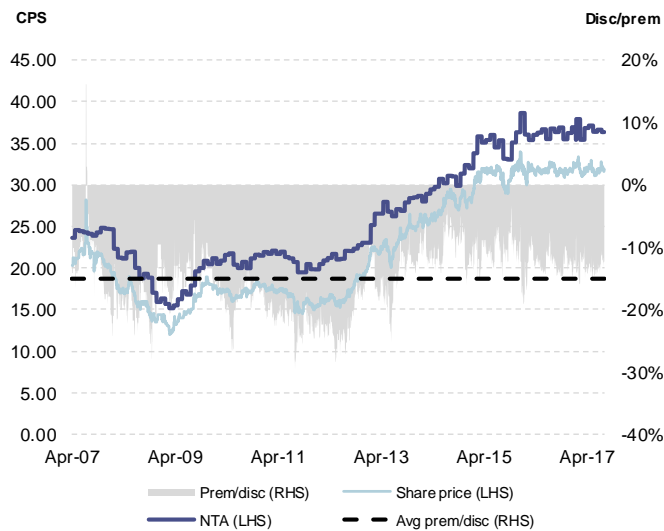
### Djerriwarrh Investments - DJW



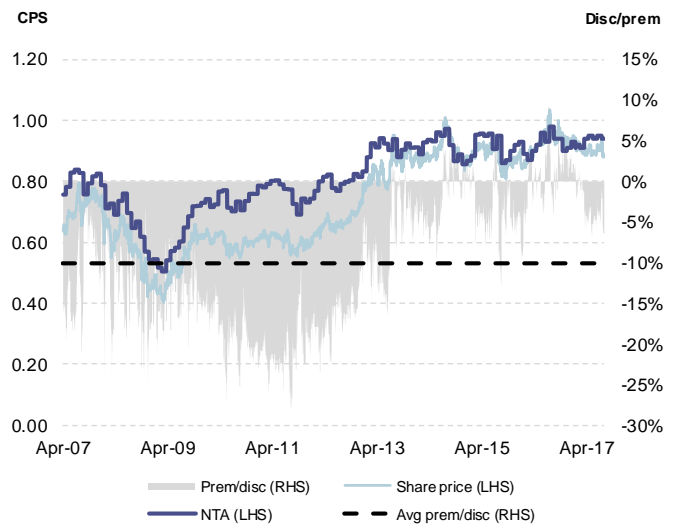
### BKI Investment Co. - BKI



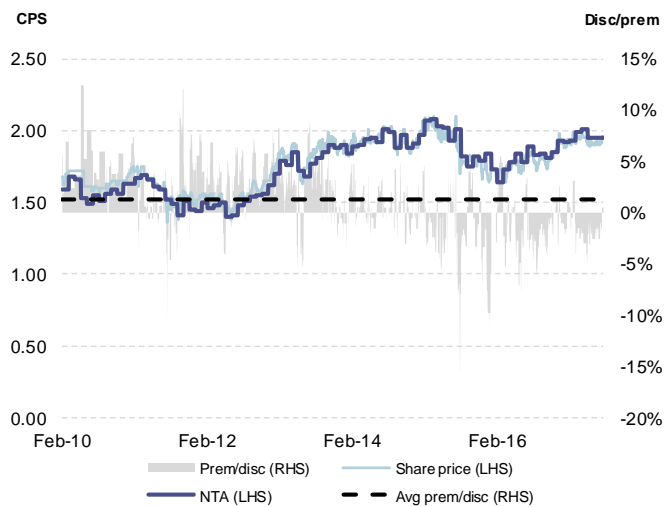
### Carlton Investments - CIN



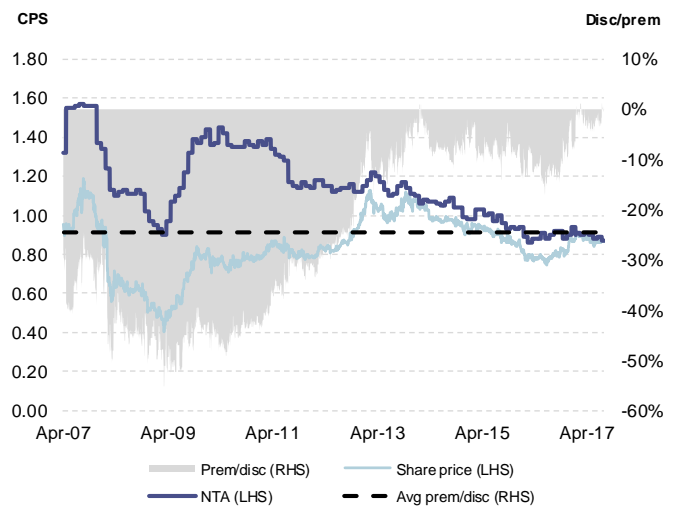
### AMCIL- AMH



### Australian Government Masters Index Fund - AQF



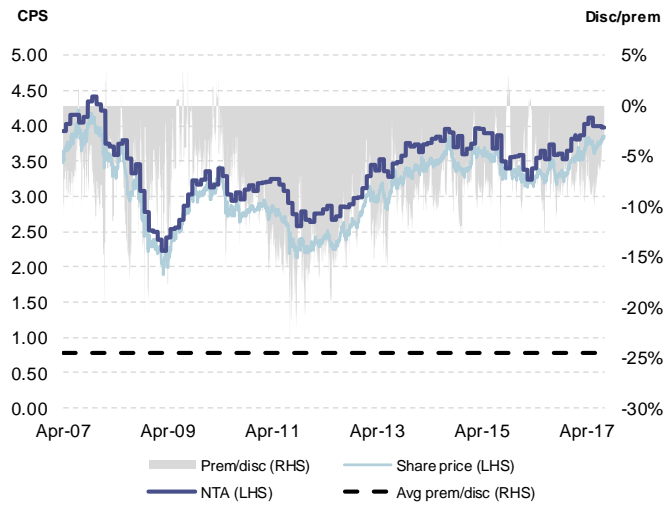
### Carlton Clime Capital - CAM



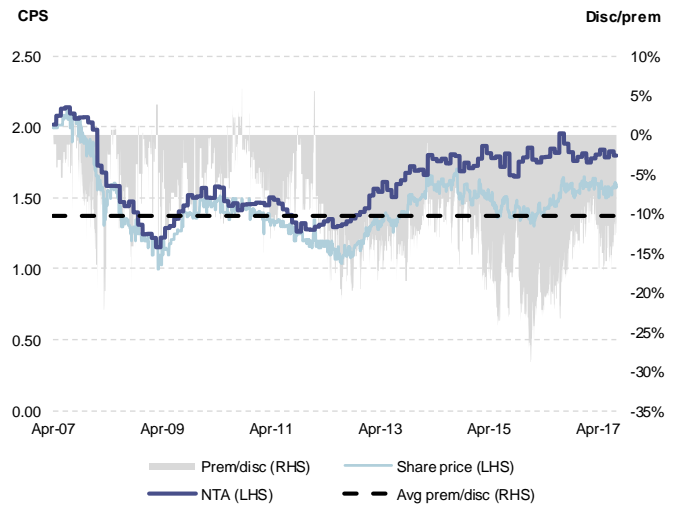
Source: IRESS, company data



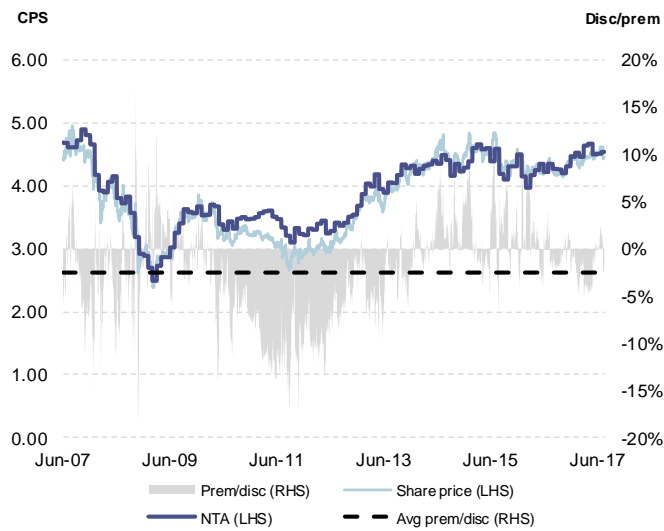
### Diversified United Investments - DUI



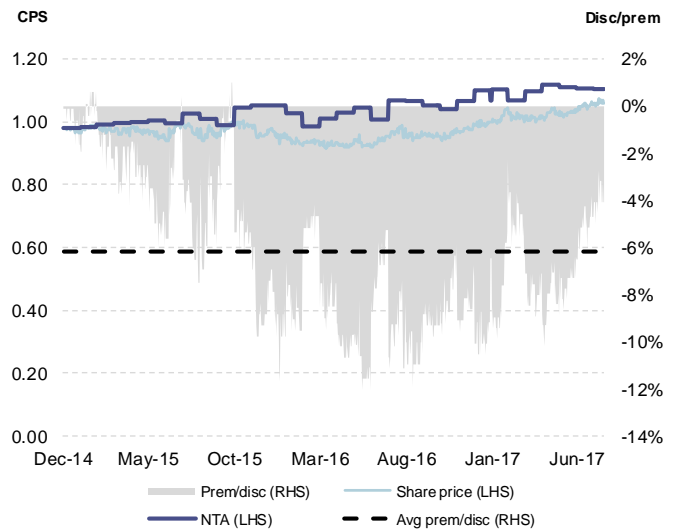
### Flagship Investments - FSI



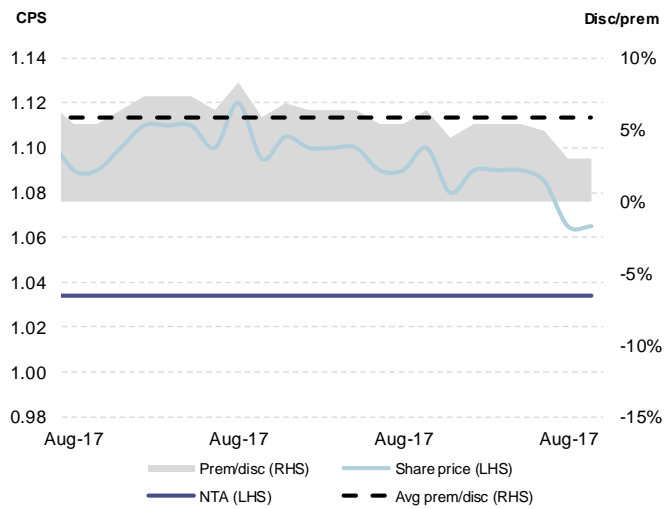
### Milton Corporation - MLT



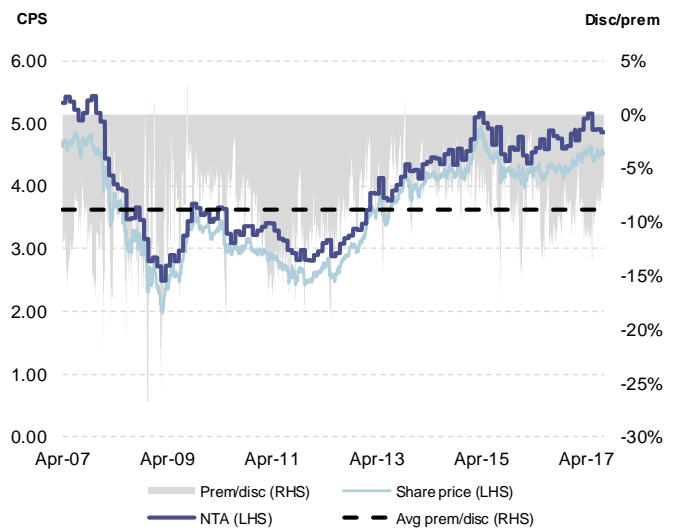
### Perpetual Investment Co. - PIC



### Plato Income Maximiser - PL8



### Whitefield - WHF

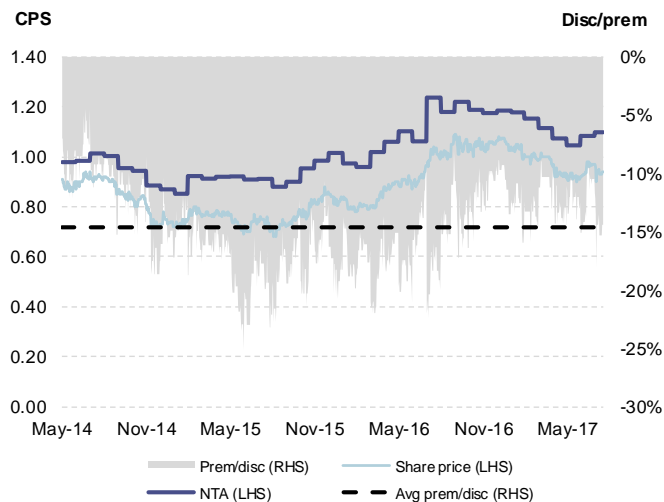


Source: IRESS, company data

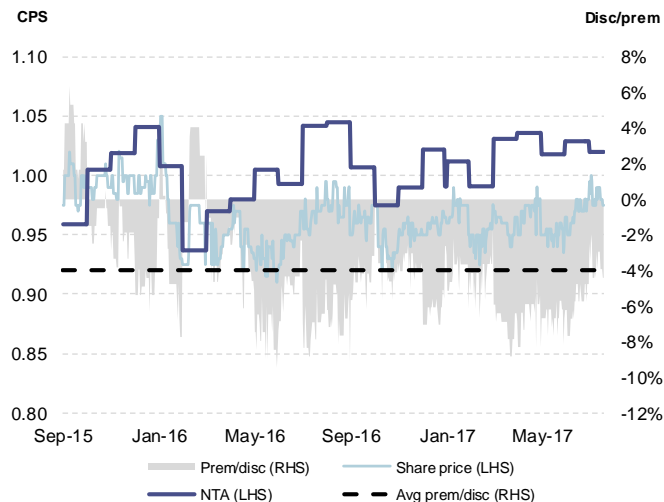


## Domestic LICs: Medium/small cap-focused

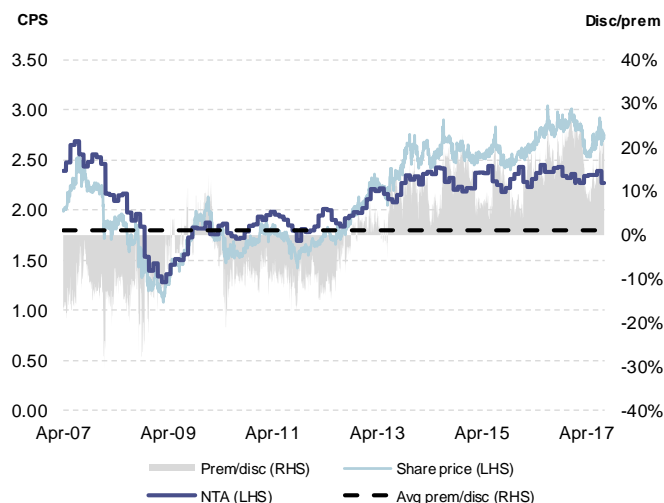
### Acorn Capital - ACQ



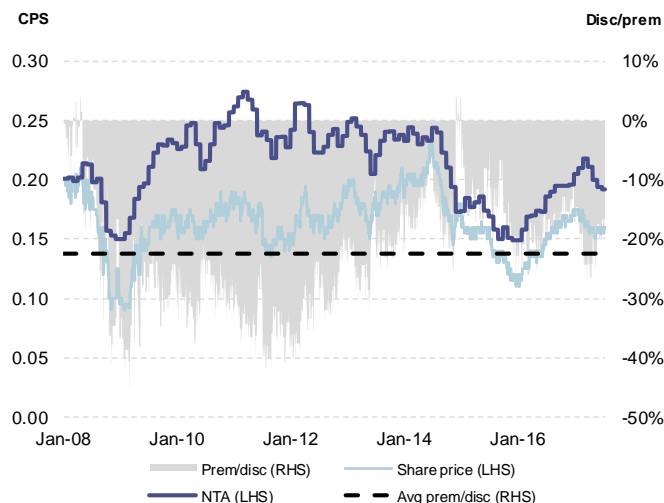
### Contango Income Generator - CIE



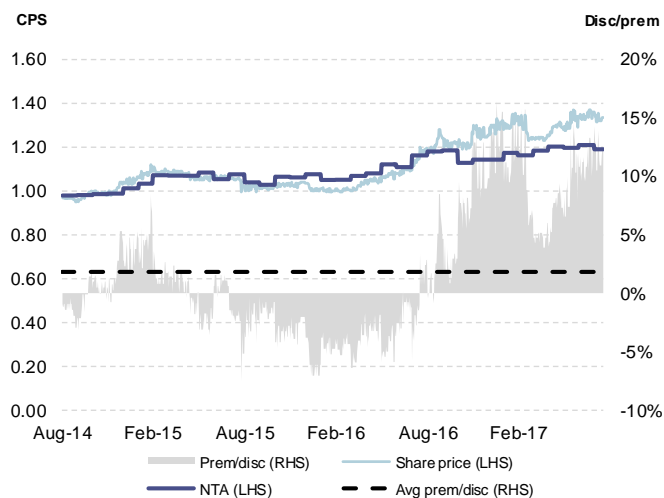
### Mirabooka - MIR



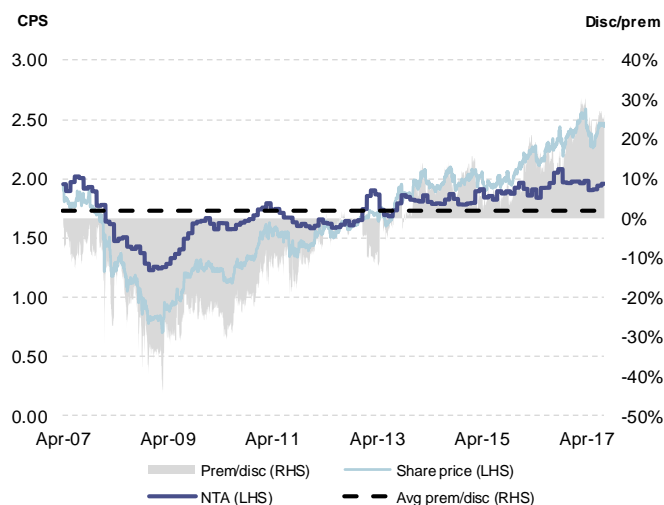
### Ozgrowth - OZG



### QV Equities - QVE



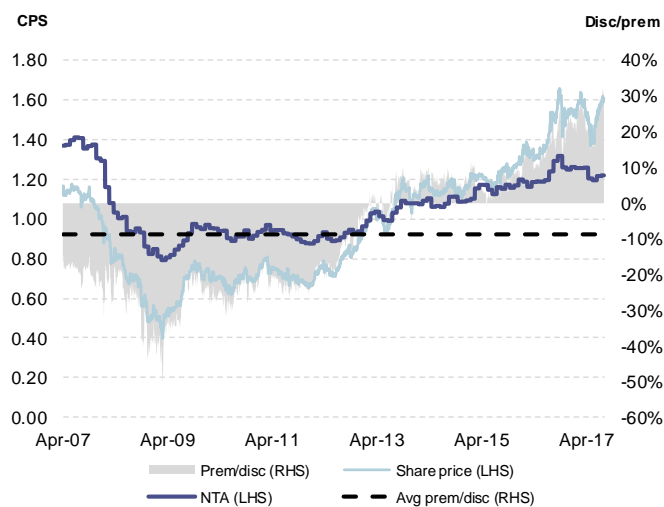
### WAM Capital - WAM



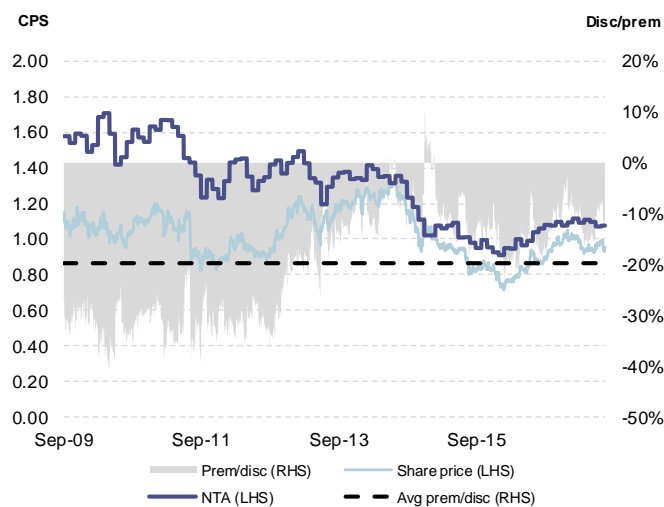
Source: IRESS, company data



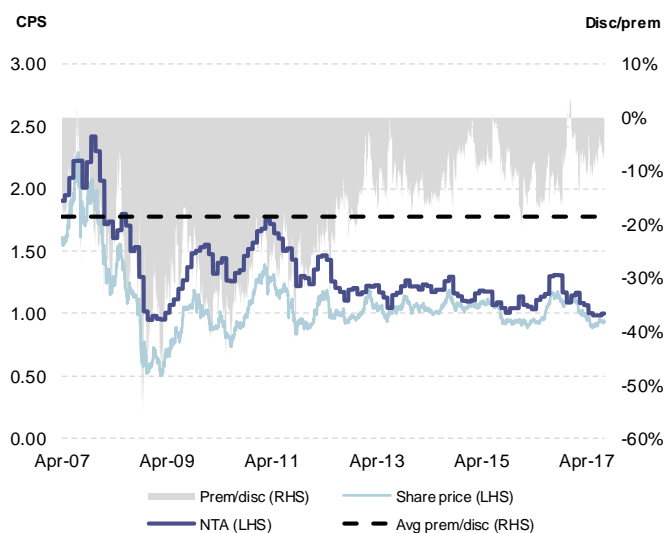
### WAM Research - WAX



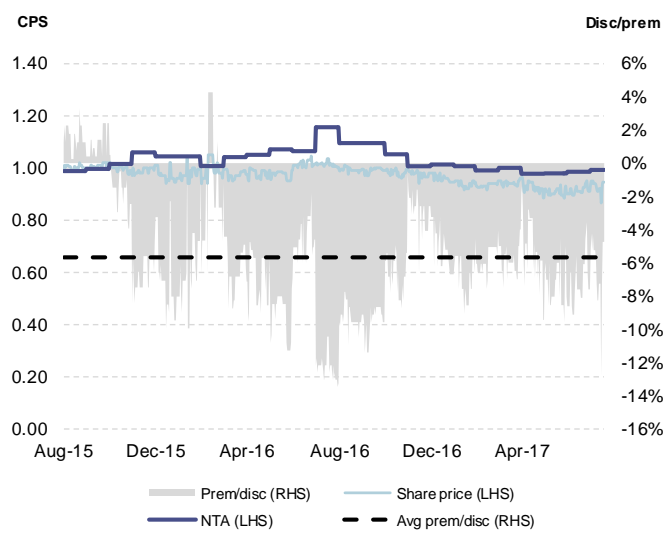
### WestOz Investment Co - WIC



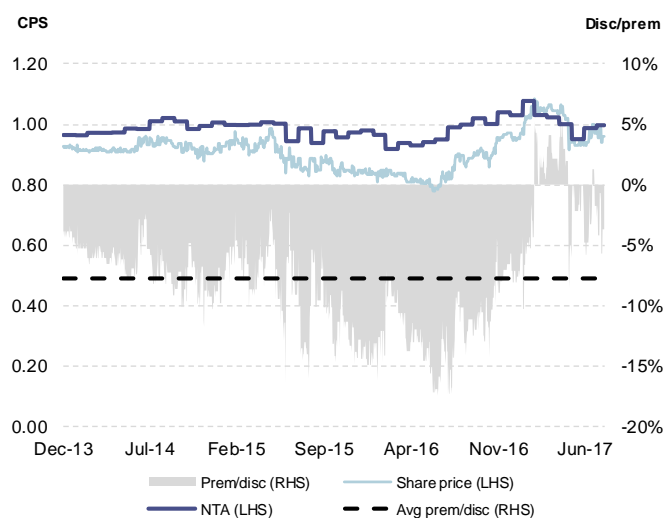
### Contango Microcap - CTN



### Glennon Small Companies - GC1



### Sandon Capital - SNC

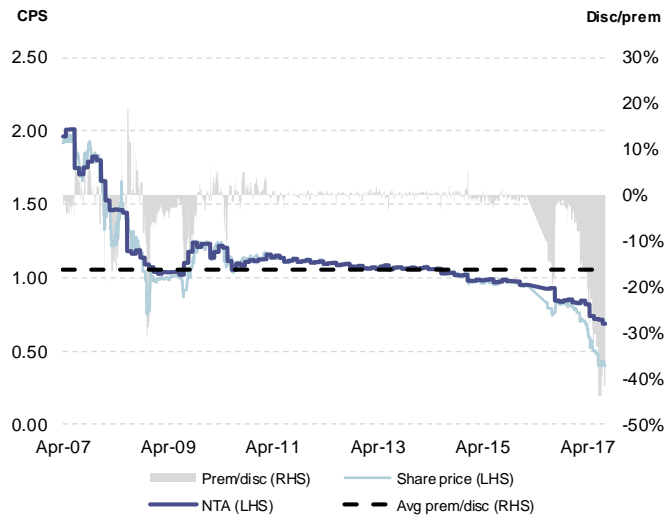


Source: IRESS, company data

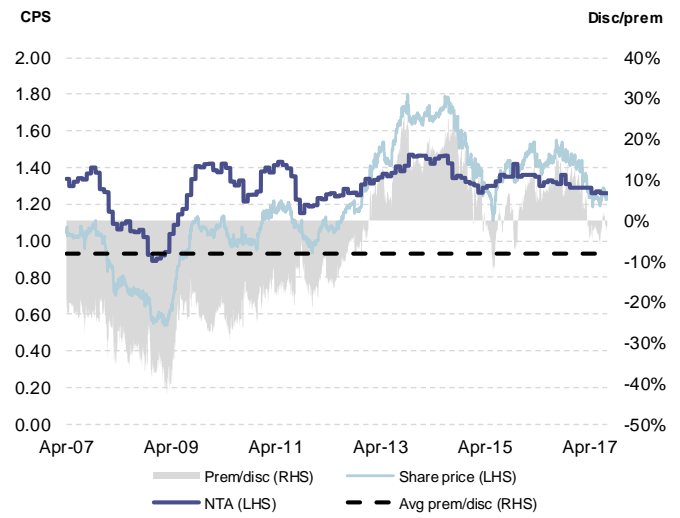


## Absolute-focused LICs

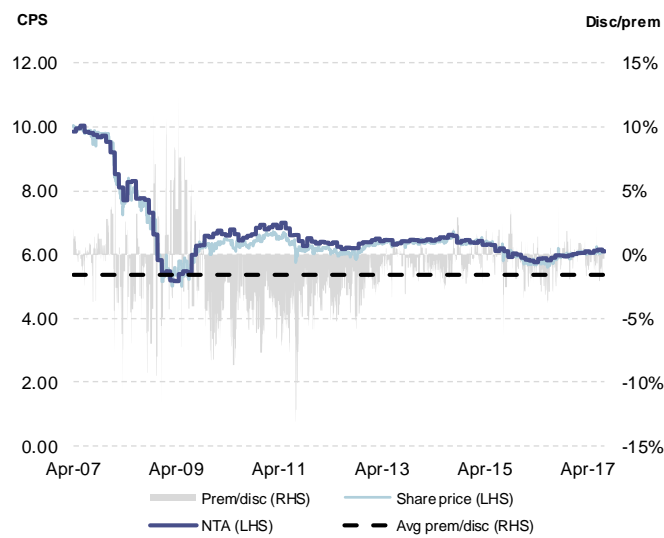
### Aurora Absolute Return Fund - ABW



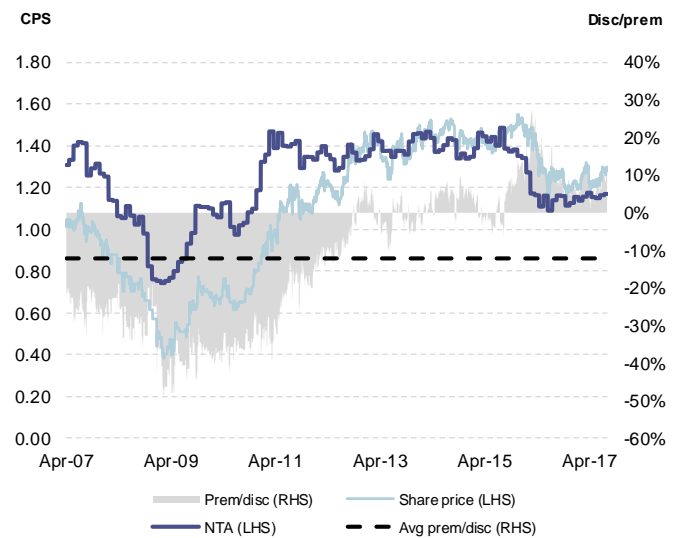
### Australian Leaders Fund - ALF



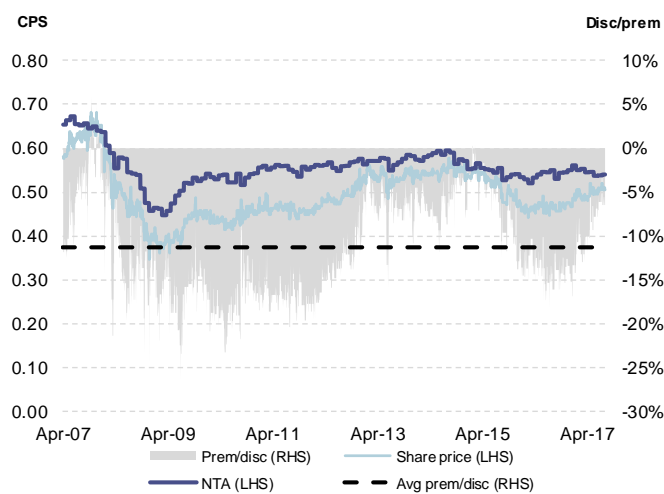
### Australian Enhanced Income Fund - AYF



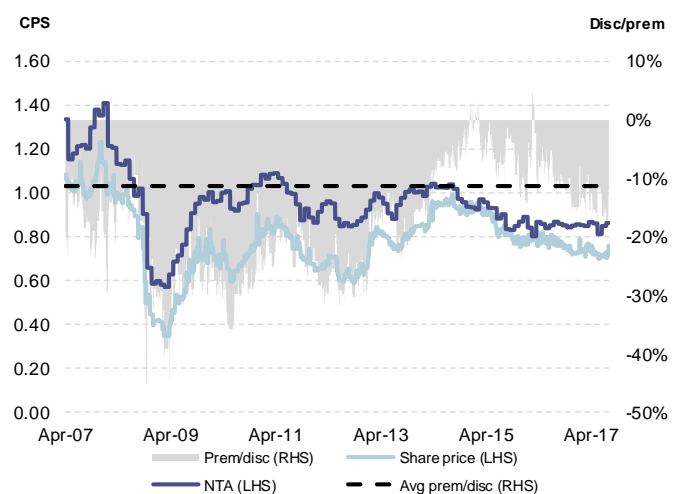
### Cadence Capital - CDM



### Ironbark Capital - IBC



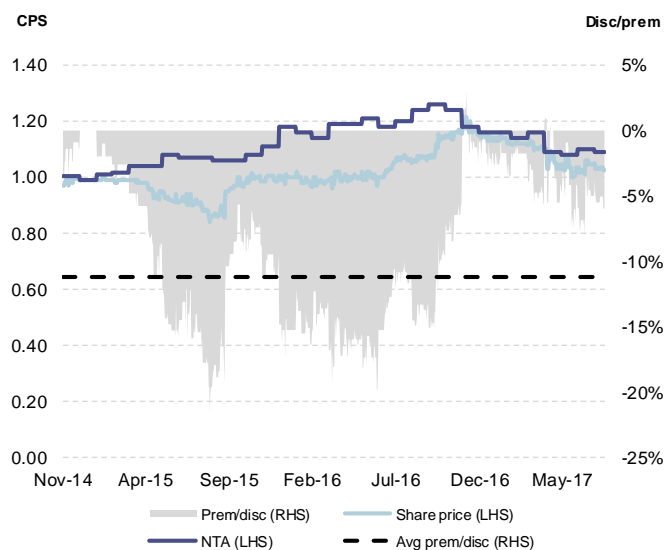
### Katana Capital - KAT



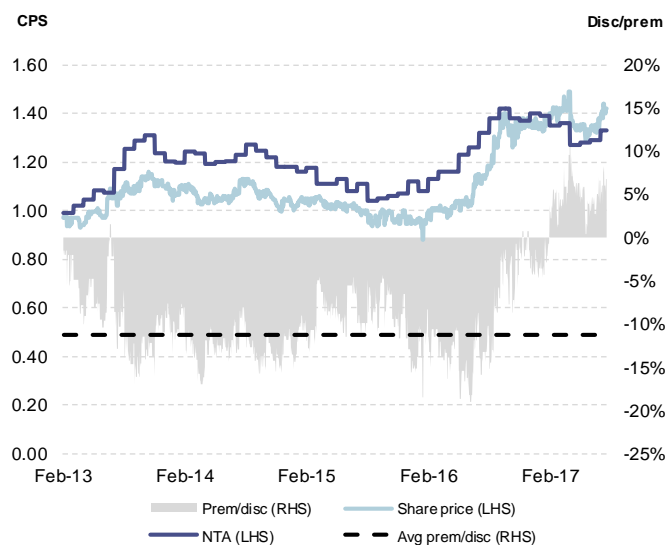
Source: IRESS, company data



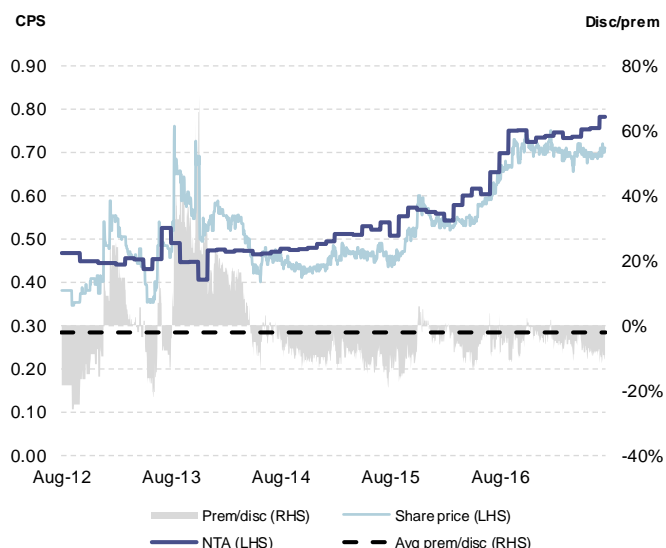
### Naos Absolute Opportunities Fund - NAC



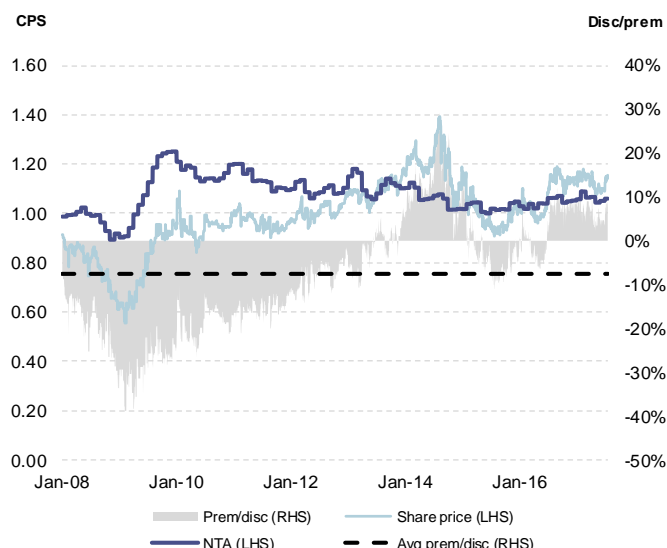
### Naos Emerging Opportunities Fund - NCC



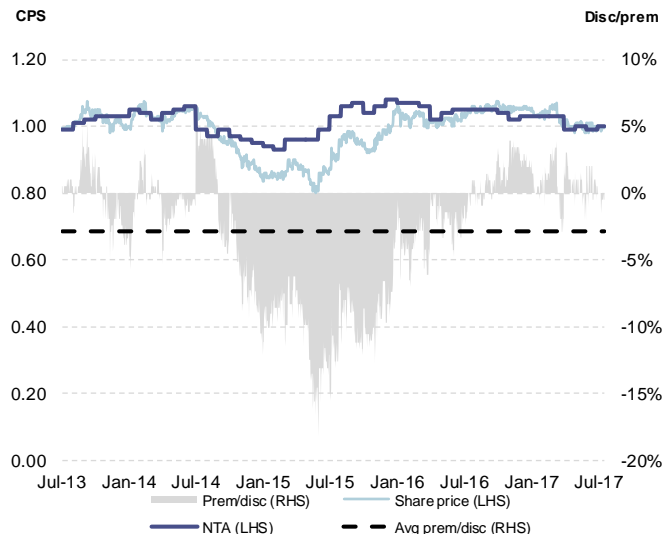
### Thorney Opportunities Fund - TOP



### WAM Active - WAA



### Watermark Market Neutral - WMK

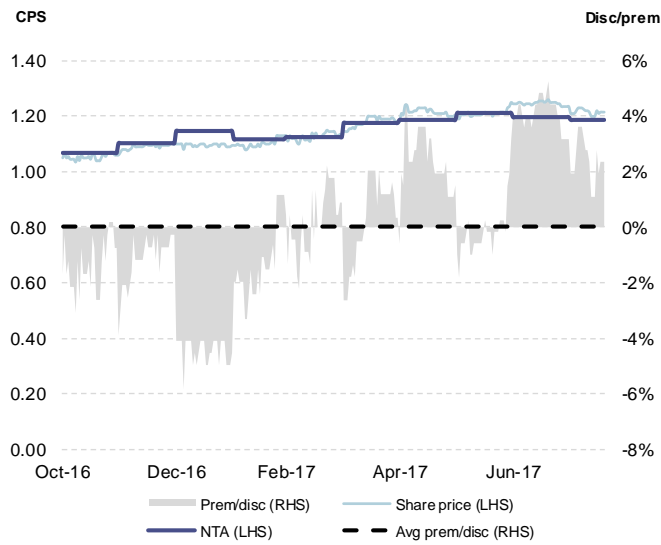


Source: IRESS, company data

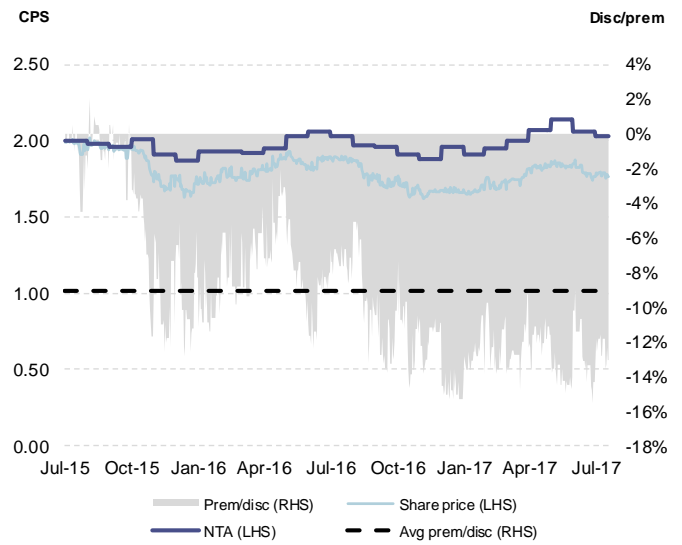


## International-focused LICs

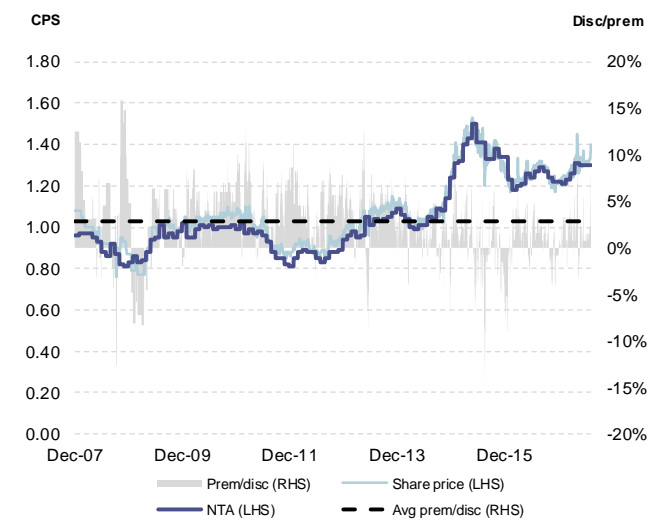
### Antipodes Global Investment Company - APL



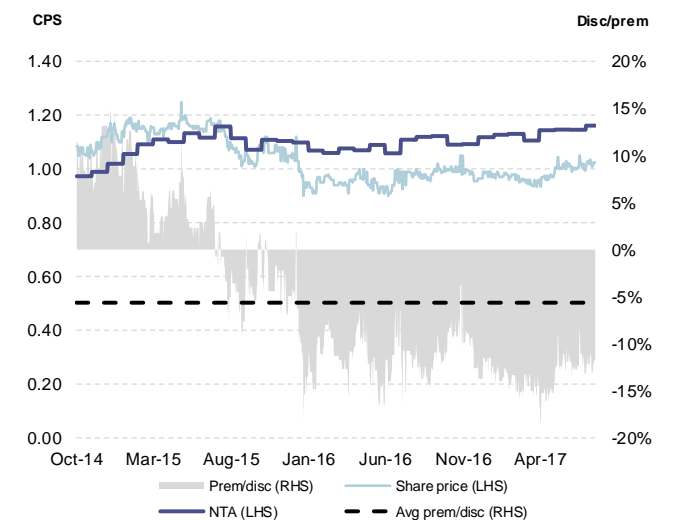
### Argo Global Listed Infrastructure - ALI



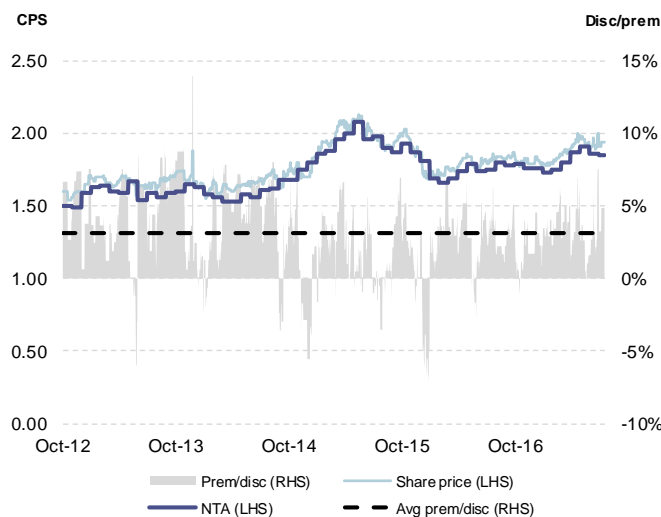
### Asian Masters Fund - AUF



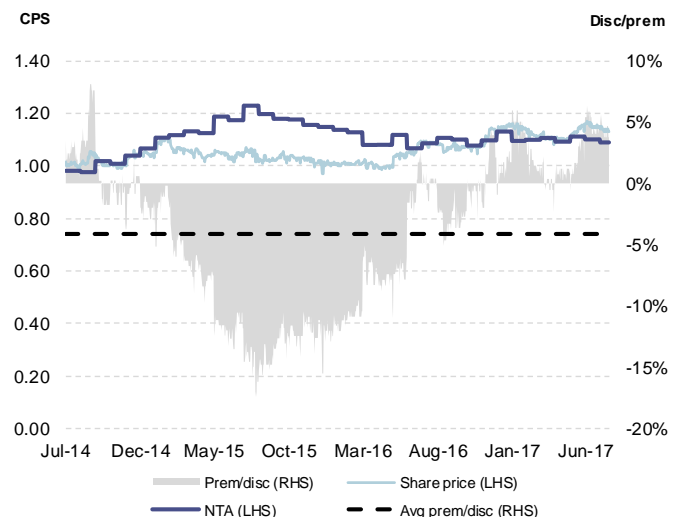
### Ellerston Global Investments - EGI



### Emerging Markets Masters Fund - EMF



### Global Value Fund - GVF

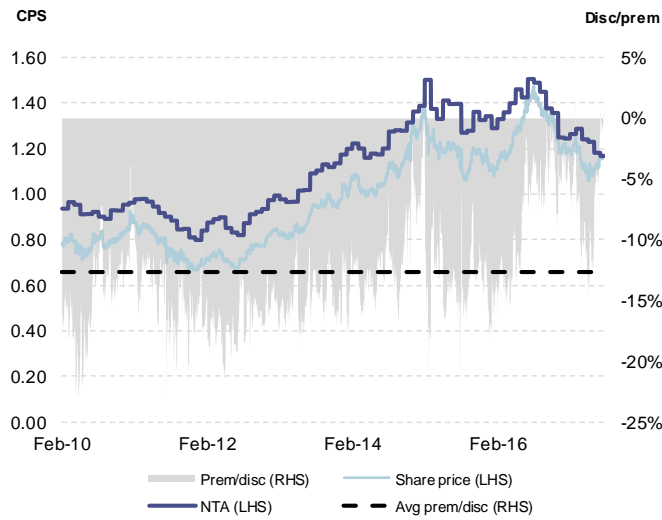


Source: IRESS, company data

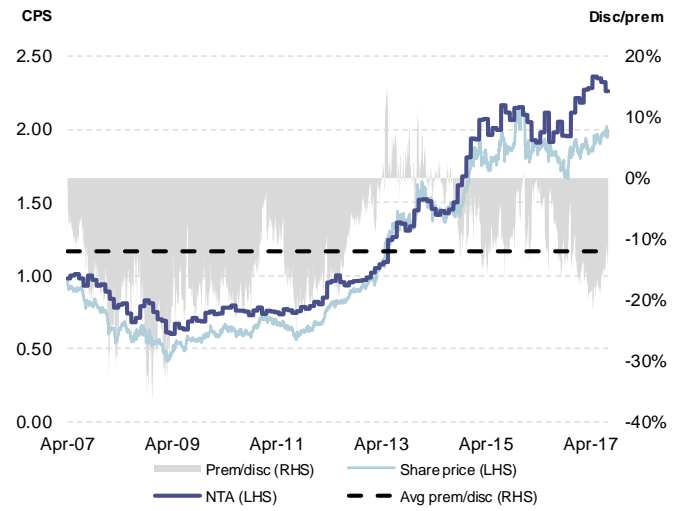




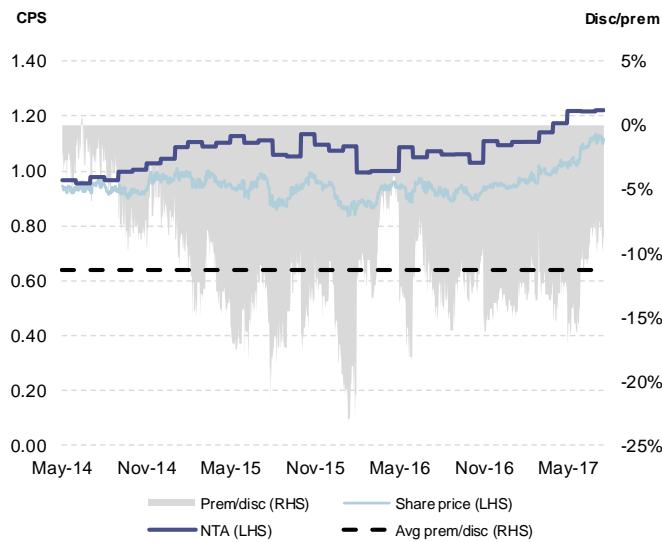
### Hunter Hall Global Value - HHV



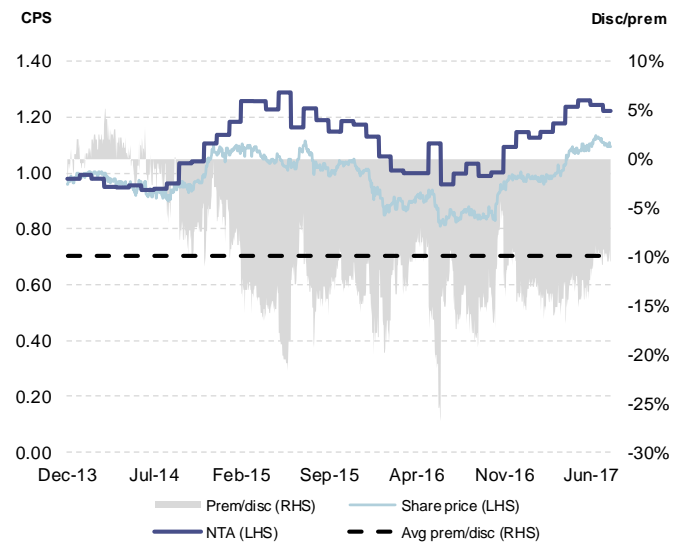
### Magellan Flagship Fund - MFF



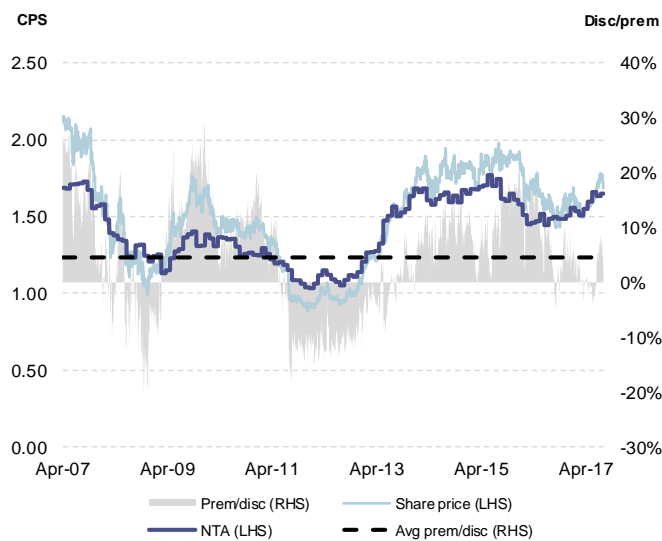
### PM Capital Asian Opportunities Fund - PAF



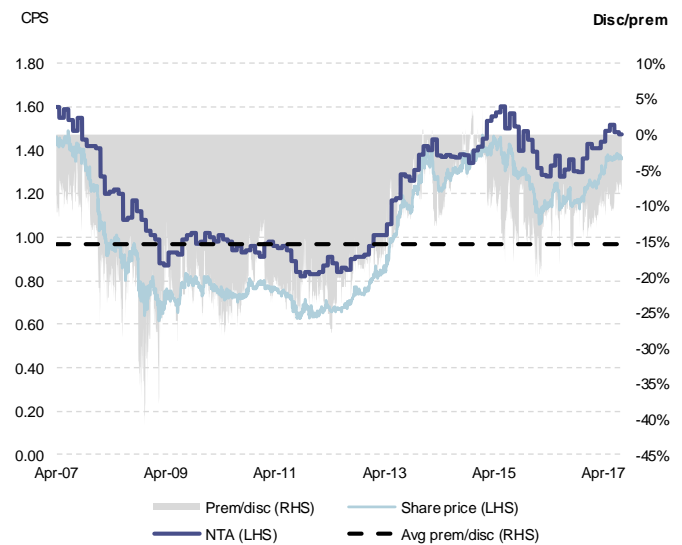
### PM Capital Global Opportunities Fund - PGF



### Platinum Capital - PMC



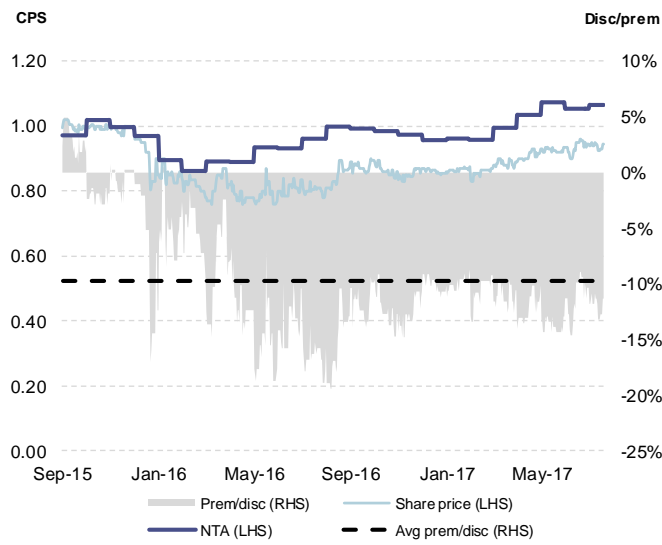
### Templeton Global Growth - TGG



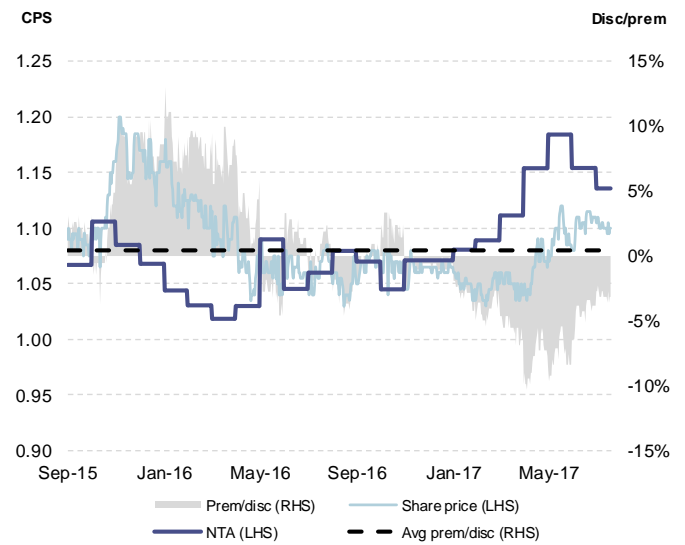
Source: IRESS, company data



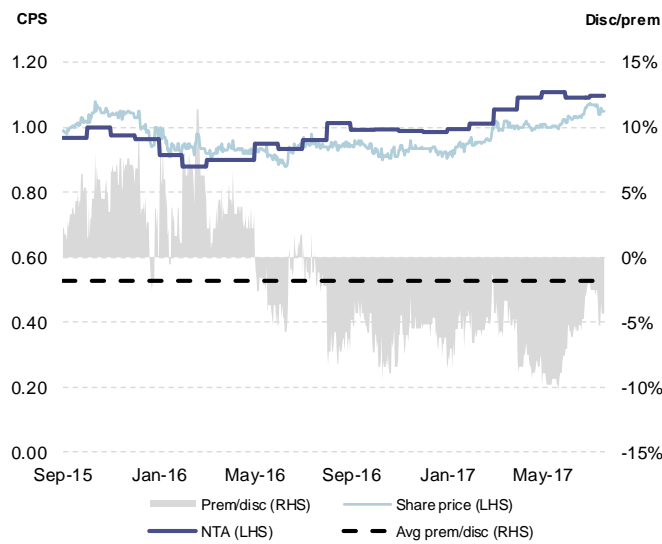
### Ellerston Asian Investments - EAI



### Future Generation Global - FGG



### Platinum Asia Investments - PAI

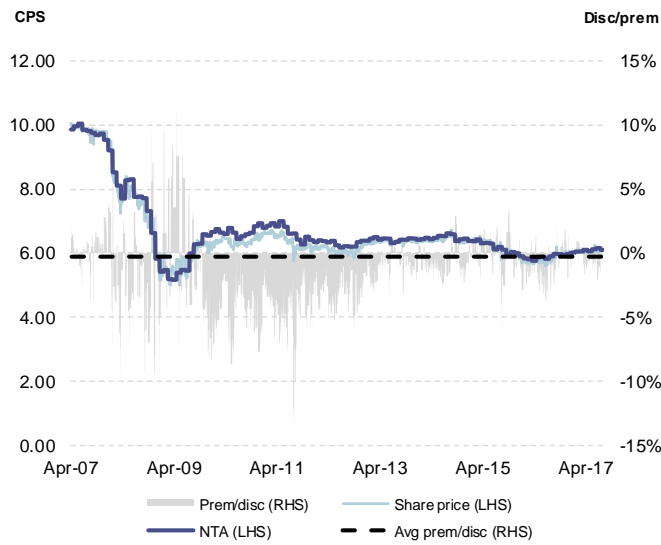


Source: IRESS, company data

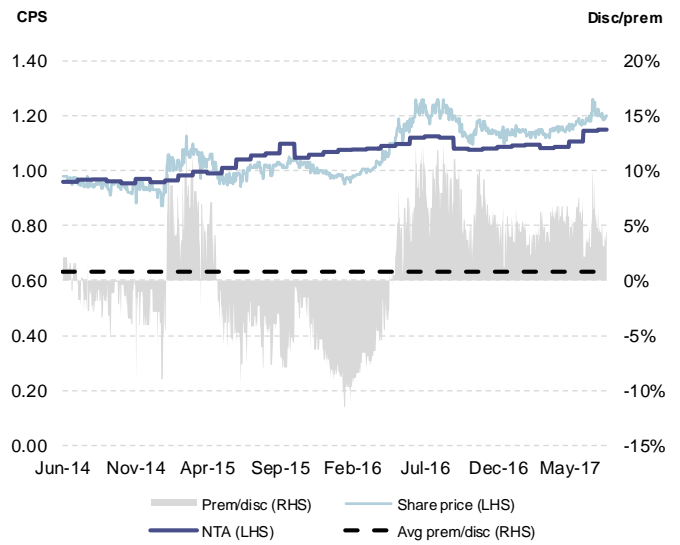


## Specialist-focused LICs

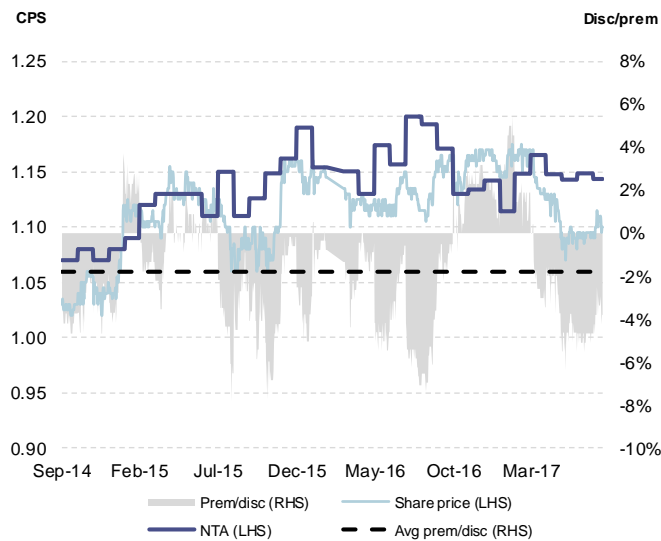
**Australian Enhanced Income Fund - AYF**



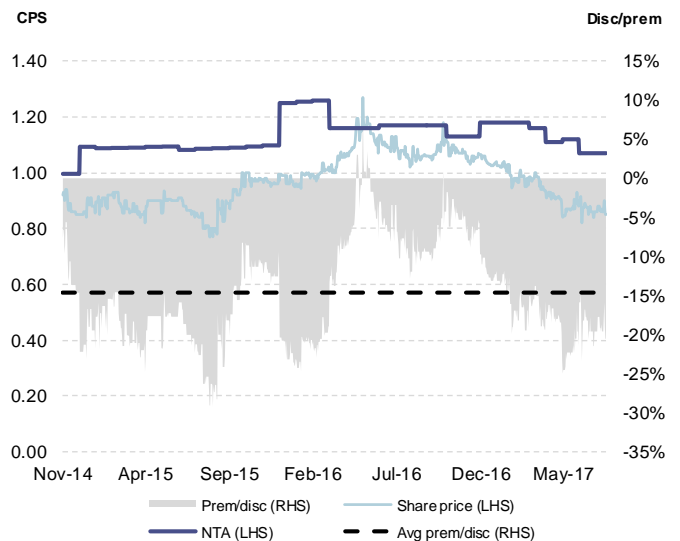
**Blue Sky Alternatives Access Fund - BAF**



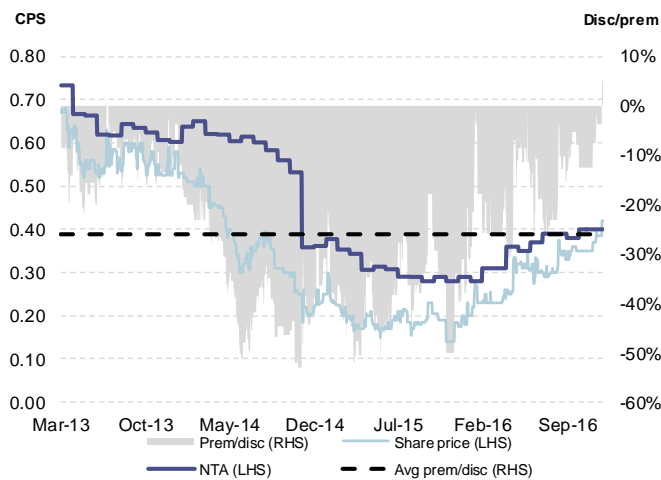
**Future Generation Investment Fund - FGX**



**Balidar Technology - BTI**



**Lion Selection Group - LSX**



Source: IRESS, company data



## Disclaimers and disclosures

### Disclaimer

This document has been prepared by Wilsons Advisory and Stockbroking Limited (AFSL 238375, ABN 68 010 529 665) ("Wilsons") and its authors without consultation with any third parties, nor is Wilsons authorised to provide any information or make any representation or warranty on behalf of such parties. Any opinions contained in this document are and are subject to change and do not necessarily reflect the views of Wilsons. This document has not been prepared or reviewed by Wilsons' Research Department and does not constitute investment research.

Wilsons makes no representation or warranty, express or implied, as to the accuracy or completeness of the information and opinions contained therein, and no reliance should be placed on this document in making any investment decision. Any projections contained in this communication are estimates only. Such projections are subject to market influences and contingent upon matters outside the control of Wilsons and therefore may not be realised in the future. Past performance is not an indication of future performance.

In preparing the information in this document Wilsons did not take into consideration the investment objectives, financial situation or particular needs of any particular investor. Before making any investment decision, you should consider your own investment needs and objectives and should seek financial advice.

This document does not constitute or form part of an offer or invitation to subscribe for or purchase any securities, and neither this document nor anything contained within it shall form the basis of or be relied upon in connection with any contract or commitment whatsoever.

Wilsons and Wilsons Corporate Finance Limited (ABN 65 057 547 323, AFSL 238 383) and their associates may have received and may continue to receive fees from any company or companies referred to in this document (the "Companies") in relation to corporate advisory, underwriting or other professional investment services. Please see relevant Wilsons disclosures at [www.wilsonsadvisory.com.au/disclosures](http://www.wilsonsadvisory.com.au/disclosures). In addition, the directors of Wilsons advise that at the date of this report they and their associates may have relevant interests in the securities of the Companies.

### Wilsons contact

Phone: 1300 655 015. Website: [wilsonsadvisory.com.au](http://wilsonsadvisory.com.au).

