

PCORE SEISMICALLY ENHANCED TEST (SET) TERMINAL SELECTION GUIDE

PCORE SET-Terminal Catalog No.	Current Rating (amps)	Terminals & Blade Construction	Overall Length	Top Terminal Description	Bottom Terminal Description
B-63033-AF	2000	Aluminum	19.00"	1 1/2"-12 Male Thread	1 1/2"-12 Female Thread
B-63034-AF	3000	Aluminum	19.00"	2"-12 Male Thread	2"-12 Female Thread
B-63034-61-AF	3000	Aluminum	21.00"	2"-12 Male Thread, 2.00" Longer Usable Thread	2"-12 Female Thread
B-63035-AF	3000	Aluminum	19.50"	3"-12 Male Thread	3"-12 Female Thread
B-63037-AF	3000	Aluminum	23.38"	4-Hole NEMA Pad @ 1.75" Spacing	4-Hole NEMA Pad @ 1.75" Spacing
B-63037-58-AF	3000	Aluminum	23.38"	4-Hole NEMA Pad (Rotated 90°) @ 1.75" Spacing	4-Hole NEMA Pad (Rotated 90°) @ 1.75" Spacing
B-63055-AF	3000	Aluminum	20.56"	4-Hole NEMA Pad @ 1.75" Spacing	2"-12 Female Thread
B-63056-AF	2000	Aluminum	20.56"	4-Hole NEMA Pad @ 1.75" Spacing	1 1/2"-12 Female Thread
B-63056-59-AF	2000	Aluminum	20.56"	4-Hole NEMA Pad @ 1.75" Spacing	M42x3 Female Thread
B-63066-AF	3000	Aluminum	20.56"	4-Hole NEMA Pad @ 1.75" Spacing	2 1/2"-12 Female Thread
B-63071-AF	3000	Aluminum	21.06"	4-Hole NEMA Pad @ 1.75" Spacing	3"-12 Female Thread
B-64049-AF	3000	Aluminum	21.00"	2 1/2"-12 Male Thread	2 1/2"-12 Female Thread
B-64049-30-AF	3000	Aluminum	21.00"	2"-12 Male Thread	2 1/2"-12 Female Thread
PCORE High Current SET-Terminals (> 4000A)					
B-63070-22-CF	4000	Copper - Silver Plated	28.25"	6-Hole NEMA Pad in Horizontal Position @ 1.75" Spacing	6-Hole NEMA Pad in Horizontal Position @ 1.75" Spacing
B-63070-25-CF	4000	Copper - Silver Plated	28.25"	4-Hole NEMA Pad @ 1.75" Spacing	4-Hole NEMA Pad @ 1.75" Spacing
B-63070-48-CF	5000	Copper - Silver Plated	28.25"	6-Hole NEMA Pad in Horizontal Position @ 1.75" Spacing	6-Hole NEMA Pad in Horizontal Position @ 1.75" Spacing
B-63070-63-CF	5000	Copper - Tin Plated	28.25"	6-Hole NEMA Pad in Horizontal Position @ 1.75" Spacing	6-Hole NEMA Pad in Horizontal Position @ 1.75" Spacing
B-63073-CF	4500	Copper - Silver Plated	22.50"	4"-12 Male Thread	4"-12 Female Thread
B-63080-22-CF	4000	Copper - Silver Plated	25.00"	6-Hole NEMA Pad in Horizontal Position @ 1.75" Spacing	4"-10 Female Thread
B-63080-25-CF	4000	Copper - Silver Plated	25.00"	4-Hole NEMA Pad @ 1.75" Spacing	4"-10 Female Thread
B-64008-22-23-CF	4000	Copper - Silver Plated	25.00"	6-Hole NEMA Pad in Horizontal Position @ 1.75" Spacing	3"-12 Female Thread
B-64008-23-CF	4000	Copper - Silver Plated	25.00"	4-Hole NEMA Pad @ 1.75" Spacing	3"-12 Female Thread
B-64008-41-CF	4000	Copper - Silver Plated	25.00"	4-Hole NEMA Pad @ 1.75" Spacing	4"-12 Female Thread
B-64071-CF	5000	Copper - Silver Plated	23.00"	8-Hole NEMA Pad w/ Special Horizontal Position Spacing	4"-12 Female Thread
B-64071-57-CF	5000	Copper - Silver Plated	23.00"	8-Hole NEMA Pad w/ Special Horizontal Position Spacing	3.75" Smooth Inside Diameter

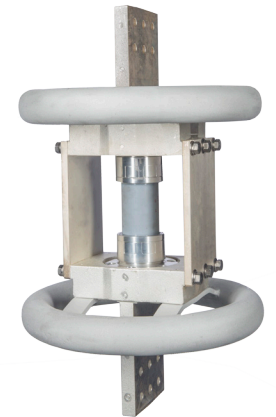
For 345kV applications, PCORE recommends the use of (1) corona ring and specified by adding the suffix "-E" to the catalog number. (Ex. B-63055-AF-E).

For 500kV applications, PCORE recommends the use of (2) corona ring and specified by adding the suffix "-EE" to the catalog number. (Ex. B-63055-AF-EE).

Note: The above designs are standard, offered units by PCORE. Please contact PCORE if a SET-Terminal design is not shown in the above table and is required for a specific application. SET-Terminal drawings are also available and provide more detail than what is represented above.



**PCORE SET-TERMINAL
3000A
B-63055-AF-E**



**PCORE HIGH CURRENT
SET-TERMINAL
4000A
B-63070-22-CF-EE**