

ROLL FORMED SHAPES

Hynes' expertise and decades of design experience guarantee the most functional and cost effective roll formed solutions. Move seamlessly from concept to reality with your custom or standard parts produced to exacting specifications - on time, every time.

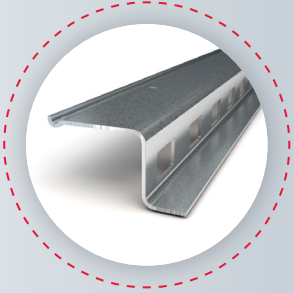
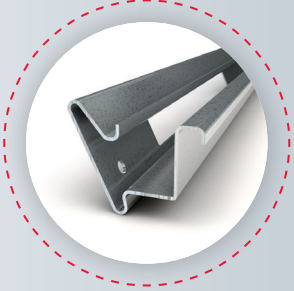
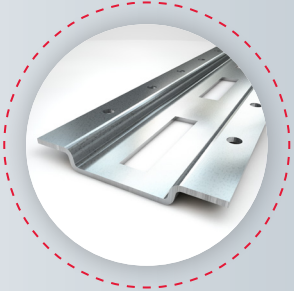
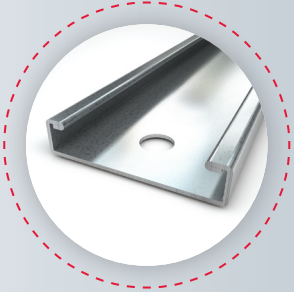
BENEFITS:

- 38 automated lines with in-line piercing, punching and stamping capabilities
- Unsurpassed design and engineering talent and experience
- A full range of secondary capabilities – punching, stamping, finishing and assembly
- Best-in-class order response and on-time delivery performance
- An ISO certified quality system, and 100% product traceability
- Competitive pricing
- A complete, in-house tool & die department
- An on-site service center offering a vast inventory of prime materials
- Customized packaging and logistics support

TYPICAL MARKETS & APPLICATIONS:

- Appliance
- Heavy Truck & Trailer
- Hardware
- Architectural
- Alternative Energy
- Lawn & Garden Equipment
- Building Materials
- Furnishings & Fixtures

Recipient of the 2010 & 2011 Platinum Awards
Wabash National Corporation



MATERIALS:

Hot Rolled Steel – Pickled & Oiled
 Hot Dipped Galvanized Steel
 Stainless Steel
 Pre-Painted

Cold Rolled Steel
 High Strength/Low Alloy Steel
 Aluminum, Copper & Brass
 Vinyl Clad

FINISHES:

Powder Coated
 Plated (Zinc, Chrome, and more)
 Protective-Vinyl Covered

Autophoretic Coated
 Dip/Spray/Electrostatically Painted
 Post Hot-Dipped Galvanized

SECONDARY PROCESSES:

Stamping and Punching

Forming and Fabricating

Assembly

SIZES:

Gauge: .003" – .250"

Length: to 60'

HYNES INDUSTRIES

Hynes Industries provides imaginative, customized metal solutions, roll formed to industry leading tolerances, with an unyielding focus on product quality, customer service and delivery performance. This has been our formula since 1925. What we do every day is part art, part science—and 100% customer driven.

Call us today to discover the Hynes Industries difference.