

Product sheet

MolokDomino® 5m³

ORIGINAL
MOLOK®

Suitability

5m³ MolokDomino is suitable for collecting cardboard, paper, plastic, mixed waste etc. The container can be divided for two or three lifting bags. With lifting containers (å 500l) the container can be divided up to six separate sections. When divided, the container can be used in collecting glass, metal and organic waste.

Dimensions and materials

Volume	5 m ³
Height	2800 mm, 1500 mm of which is installed under ground
Diameter	1600 x 1600 mm
Well body material	Fiber concrete
Lid and filling lid	HD Polyethylene
Lifting bag	Polypropylene
Reinforced lifting bag	Polypropylene + PVC

Concrete-made well body is completely water proof. Filling hole situates about 1,1 m above ground level. Lifting bag is made of strong woven polypropylene. Safe Working Load (SWL) is indicated in the lifting bag. There is an aluminium lifting ring on the top of the lifting bag. Quick system or four lifting loops are attached to the lifting ring. The closing mechanism is situated at the bottom of the lifting bag. The SWL of 5m³ lifting bag is 1250 kg.

Accessories

Quick system (standard) 1/1, 1/2, 1/3, 2/3
 Hinge for 1/1 quick system
 Lifting bag (standard) 1/1, 1/2, 1/3, 2/3
 Reinforced lifting bag 1/1, 1/2, 1/3, 2/3
 Lifting bag for cardboard 1/1
 Semi-hard lifting bag 1/1,1/2
 Semi-hard reinforced lifting bag 1/1, 1/2
 Lifting container, BioSystem 500 l (for 1/3 container)
 Side hinge for 1/3 lid
 Support catch for the filling lid
 Locking for filling lid
 Locking for lid

Lid alternatives

Standard lid 1/1, 1/2, 1/3, 2/3
 Standard lid with filling slot 1/1

Framing options

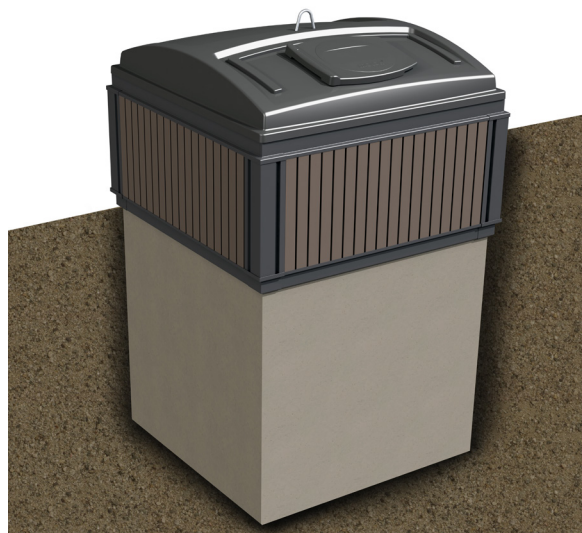
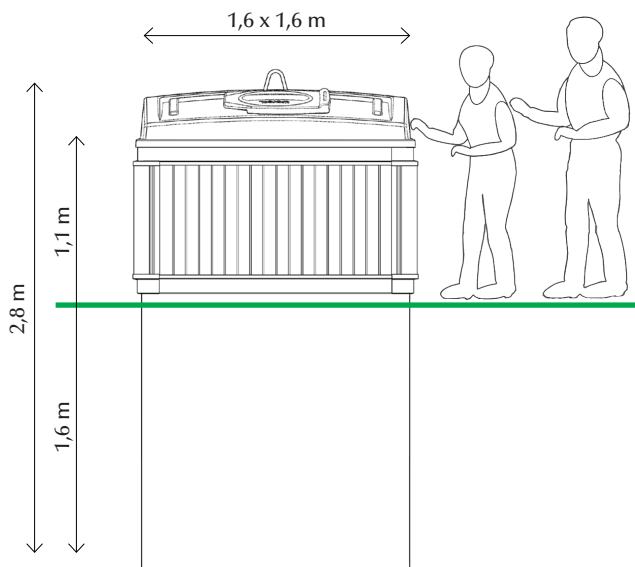
Composite board (7 shades)
 Recycled plastic board
 Aluminium (natural)
 Painted aluminium (RAL tones, standard RAL7024)
 Print framing

Dividing the wells:



Standards

Molok®-Deep Collection System complies with the requirements of EN13071-standard. Molok®-lifting bags are tested according to ISO 21898-standard.



Product sheet

MolokDomino® Global 5m³

ORIGINAL
MOLOK®

Suitability

5m³ MolokDomino Global is suitable for collecting cardboard, paper, plastic, mixed waste etc. The container can be divided in to two. When divided, the container can be used in collecting glass and metal.

Dimensions and materials

Volume	5 m ³
Height	2800 mm, 1500 mm of which is installed under ground
Diameter	1600 x 1600 mm
Well body material	HD Polyethylene
Lid and filling lid	HD Polyethylene
Lifting bag	Polypropylene
Reinforced lifting bag	Polypropylene + PVC

Rotation molded well body is completely water proof. Filling hole situates about 1,1 m above ground level. Lifting bag is made of strong woven polypropylene. Safe Working Load (SWL) is indicated in the lifting bag. There is an aluminium lifting ring on the top of the lifting bag. Quick system or four lifting loops are attached to the lifting ring. The closing mechanism is situated at the bottom of the lifting bag. The SWL of 5m³ lifting bag is 1250 kg.

Accessories

Quick system (standard) 1/1, 1/2
Hinge for 1/1 quick system
Lifting bag (standard) 1/1, 1/2
Reinforced Lifting bag 1/1, 1/2
Support catch for the filling lid
Locking for filling lid

Framing options

Composite board (7 shades)
Recycled plastic board
Aluminium (natural)
Painted aluminium (RAL tones, standard RAL7024)
Print framing

Lid alternatives

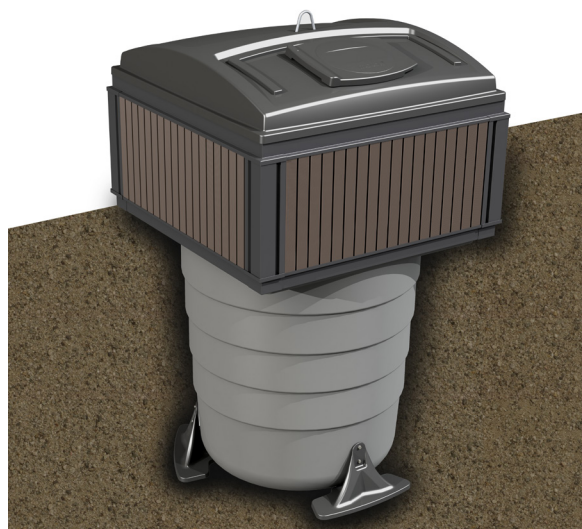
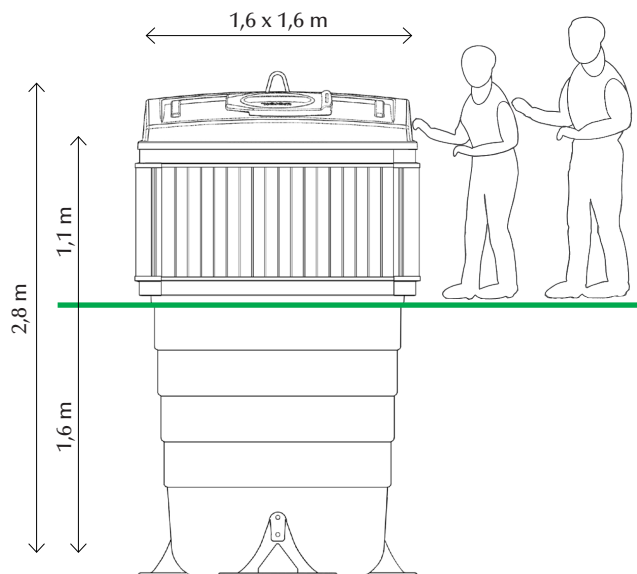
Standard lid 1/1, 1/2
Standard lid with filling slot 1/1

Dividing the wells



Standards

Molok®-Deep Collection System complies with the requirements of EN13071-standard.
Molok®-lifting bags are tested according to ISO 21898-standard.



Product sheet

MolokDomino® 3m³

ORIGINAL
MOLOK®

Suitability

3m³ MolokDomino is suitable for collecting cardboard, paper, plastic, mixed waste, glass, metal etc.

The container can be divided for two lifting bags. With lifting containers (å 500l) the container can be divided up to four separate sections. When divided, the container can be used in collecting organic waste.

Dimensions and materials

Volume	3 m ³
Height	2800 mm, 1500 mm of which is installed under ground
Diameter	1060 x 1600 mm
Well body material	Fiber concrete
Lid and filling lid	HD Polyethylene
Lifting bag	Polypropylene
Reinforced lifting bag	Polypropylene + PVC

Concrete-made well body is completely water proof. Filling hole situates about 1,1 m above ground level. Lifting bag is made of strong woven polypropylene. Safe Working Load (SWL) is indicated in the lifting bag. There is an aluminium lifting ring on the top of the lifting bag. Quick system or four lifting loops are attached to the lifting ring. The closing mechanism is situated at the bottom of the lifting bag. The SWL of 3m³ lifting bag is 1250 kg.

Accessories

Quick System (standard)
Lifting bag (standard) 1/1, 1/2
Reinforced Lifting bag 1/1, 1/2
Support catch for the filling lid
Locking for filling lid
Lifting container, BioSystem 500 l (for 1/2 container)
Side hinge for 1/2 lid

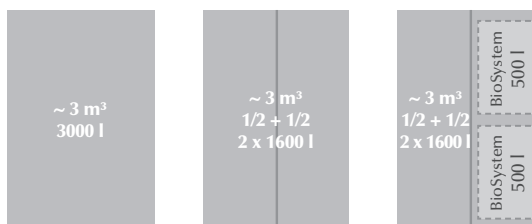
Framing options

Composite board (7 shades)
Recycled plastic board
Aluminium (natural)
Painted aluminium (RAL tones, standard RAL7024)
Print framing

Lid alternatives

Standard lid 1/1, 1/2

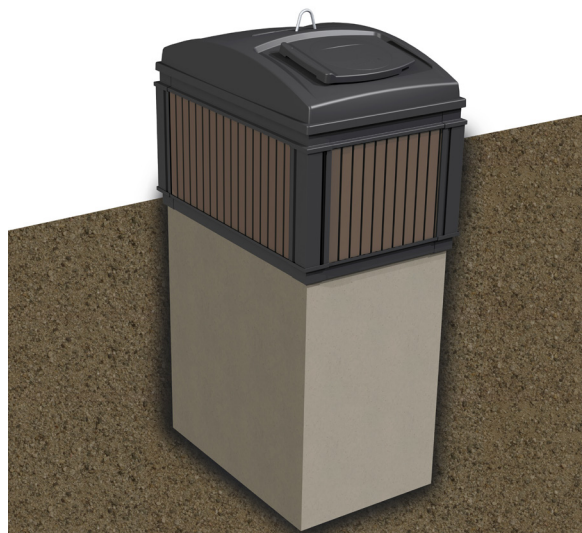
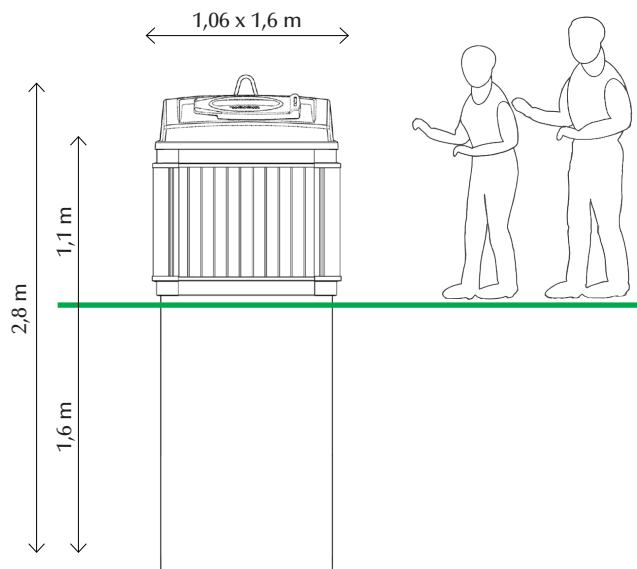
Dividing the wells



Standards

Molok®-Deep Collection System complies with the requirements of EN13071-standard.

Molok®-lifting bags are tested according to ISO 21898-standard.



Product sheet

MolokDomino® Plus 3m³

ORIGINAL
MOLOK®

Suitability

3m³ MolokDomino Plus is suitable for collecting cardboard, paper, plastic, mixed waste, glass, metal etc. The container can be divided for two lifting bags.

Dimensions and materials

Volume	3 m ³
Height	1700 mm, 500 mm of which is installed under ground
Diameter	1600 x 1600 mm
Well body material	HD Polyethylene
Lid and filling lid	HD Polyethylene
Lifting bag	Polypropylene
Reinforced lifting bag	Polypropylene + PVC

Rotation molded well body is completely water proof. Filling hole situates about 1,1 m above ground level. Lifting bag is made of strong woven polypropylene. Safe Working Load (SWL) is indicated in the lifting bag. There is an aluminium lifting ring on the top of the lifting bag. Quick system or four lifting loops are attached to the lifting ring. The closing mechanism is situated at the bottom of the lifting bag. The SWL of 3m³ lifting bag is 1250 kg.

Accessories

Quick system (standard)
Hinge for Quick system 1/1
Lifting bag (standard) 1/1, 1/2
Reinforced Lifting bag 1/1, 1/2
Support catch for the filling lid
Locking for filling lid

Framing options

Composite board (7 shades)
Recycled plastic board
Aluminium (natural)
Painted aluminium (RAL tones, standard RAL7024)
Print framing

Dividing the wells

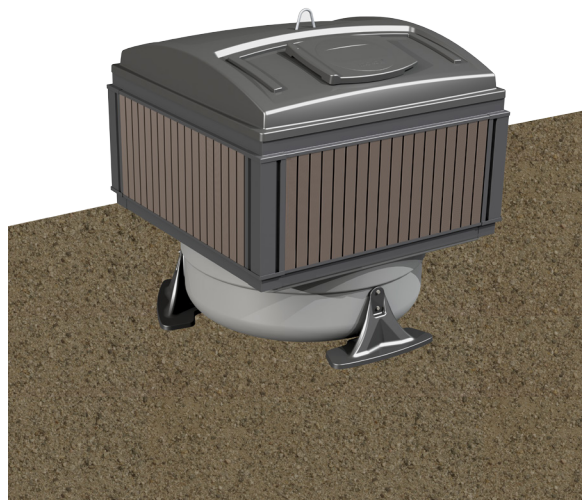
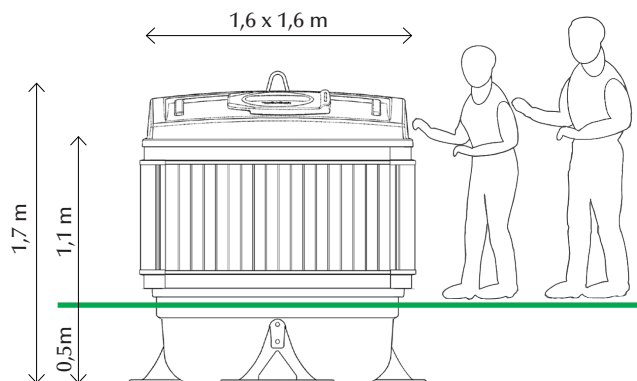


Lid alternatives

Standard lid 1/1, 1/2
Standard lid with filling slot 1/1

Standards

Molok®-Deep Collection System complies with the requirements of EN13071-standard.
Molok®-lifting bags are tested according to ISO 21898-standard.



Product sheet

MolokDomino® Light 2m³

ORIGINAL
MOLOK®

Suitability

2m³ MolokDomino Light is suitable for collecting mixed waste, plastic, glass, metal etc. The container can be divided for two lifting bags.

Dimensions and materials

Volume	2 m ³
Height	1200 mm, surface container
Diameter	1600 x 1600 mm
Well body material	HD Polyethylene
Lid and filling lid	HD Polyethylene
Lifting bag	Polypropylene
Reinforced Lifting bag	Polypropylene + PVC

Rotation molded well body is completely water proof. Filling hole situates about 1,1 m above ground level. Lifting bag is made of strong woven polypropylene. Safe Working Load (SWL) is indicated in the lifting bag. There is an aluminium lifting ring on the top of the lifting bag. Quick system or four lifting loops are attached to the lifting ring. The closing mechanism is situated at the bottom of the lifting bag. The SWL of 2m³ lifting bag is 1250 kg.

Accessories

Quick system (standard)
Hinge for Quick system 1/1
Lifting bag (standard) 1/1, 1/2
Reinforced lifting bag 1/1, 1/2
Support catch for the filling lid
Locking for filling lid

Framing options

Composite board (7 shades)
Recycled plastic board
Aluminium (natural)
Painted aluminium (RAL tones, standard RAL7024)
Print framing

Lid alternatives

Standard lid 1/1, 1/2
Standard lid with filling slot 1/1

Dividing the wells



Standards

Molok®-Deep Collection System complies with the requirements of EN13071-standard.
Molok®-lifting bags are tested according to ISO 21898-standard.

