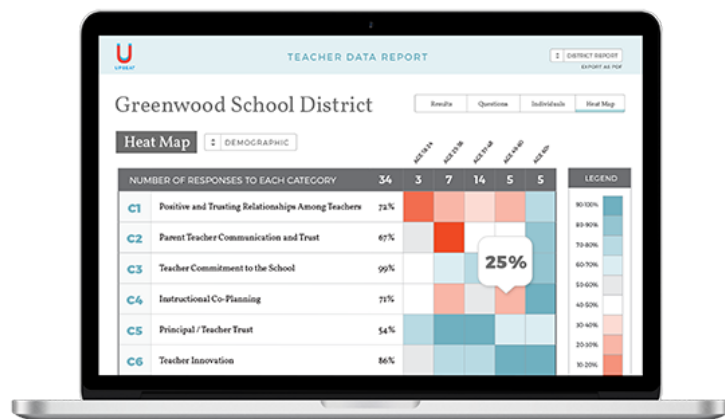




## Upbeat Teaching From Home Survey



Net Promoter Score (NPS): 72\*

- Expert-designed survey that gathers information on teachers' experiences working from home due to COVID-19 school closures
- Developed with feedback from teachers, principals, and district leaders from across the country
- Robust reporting and action planning

\*Principals were asked: "How likely is it that you would recommend Upbeat to a friend or a colleague?" The Industry average is 28. A score of 70+ is considered exceptional and rare.

"Through our partnership with Upbeat, we have been able to gather critical feedback to improve school environments across our district. Our principals have shared that Upbeat's teacher survey and actionable guidance from an Upbeat leadership coach have been critical to create successful action plans and interventions leading to an increase teacher engagement and a more positive school culture."

Frederick (Erick) Treuting, Jr., Administrator of Human Resources Compliance, Development, and Retention  
 St. Charles Parish Public Schools, Louisiana

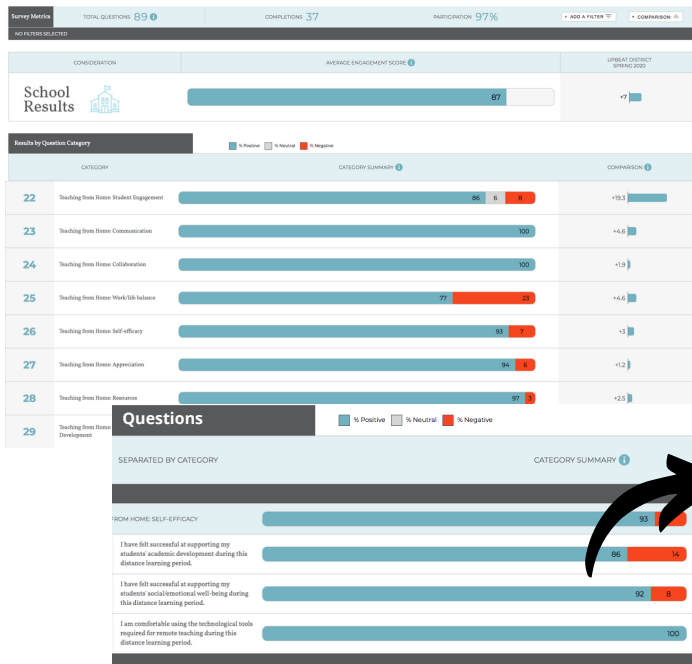
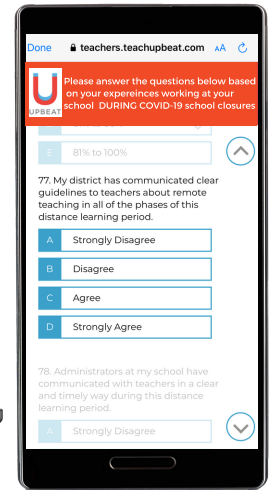
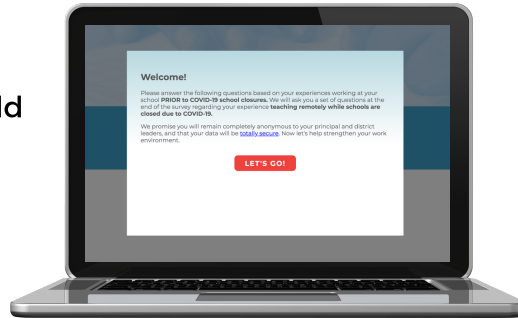


"Working with Upbeat is one of the best decisions I have made as a Superintendent. Upbeat's granular teacher engagement data alongside their principal leadership coaching have resulted in improvements to our teacher retention after only one year of working together."

Samantha Fuhrey, 2020 Georgia Superintendent of the Year  
Newton County Schools System, Georgia

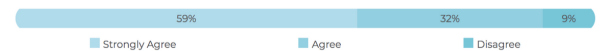
## Ready to Administer Anytime, Anywhere

- Easy to implement and deploy (taken on computer or mobile device)
- First-of-its-kind survey with the option to add or remove survey categories or individual questions for specific district needs
- Protects anonymity of teachers

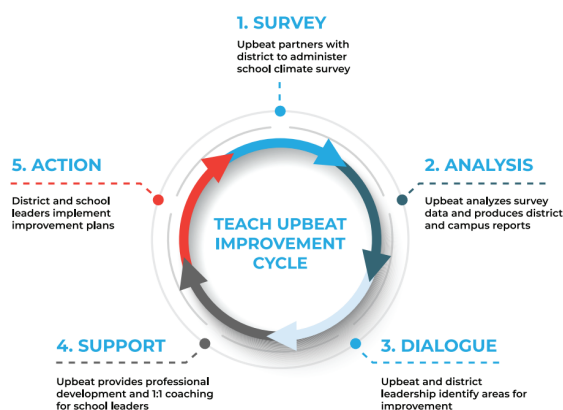


- Reports with ability to disaggregate the data by grade level, subject area, and view comparisons to nationwide data and previous administrations
- District and individual school reports allow for in-depth analysis

I have felt successful at supporting my students' social/emotional well-being during this distance learning period.



### Teach Upbeat Improvement Cycle



Using the **Teach Upbeat Improvement Cycle**, our leadership coaches guide district and school leaders through the planning, administration, and post-survey review. We partner with districts to create an action plan and advise on next steps.