

# Unified Platform™

## Giving you control of your SAP landscape

SAP® landscapes become more complex as business needs grow. Technical teams are under constant pressure to deliver and maintain these systems, on time, with reduced cost - all while keeping the lights on.

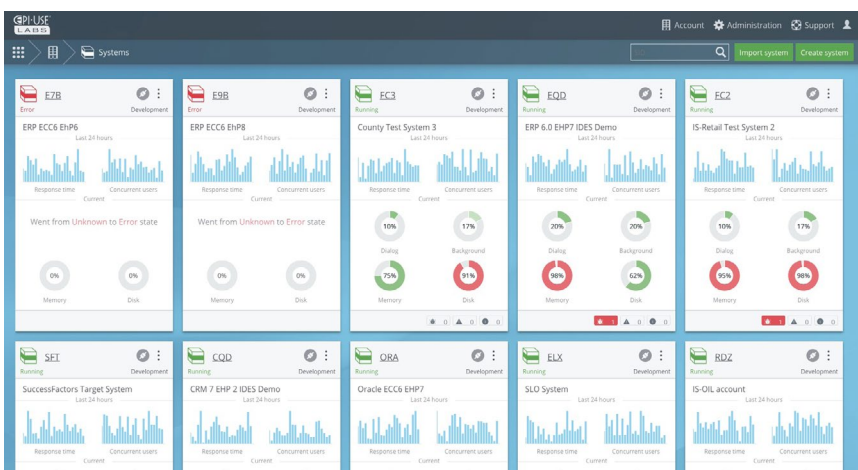
Through automation, Unified Platform™ minimizes human intervention for specialized SAP® management and infrastructure tasks. Through templates and in-built best practice processes, SAP systems can be set up and managed more reliably, with fewer people.

### What is the Unified Platform™?

Unified Platform™ is a powerful web-based software appliance that helps businesses reduce the cost of operations and increase business agility through:

- Orchestration of complex SAP® basis activities
- Easy system management via intuitive dashboards
- Provision and management of SAP® systems including cloning, editing and refreshes
- Central user, security and license management
- Automatic service remediation and intelligent alert framework

### Business benefits



- Better visibility, control and application management across your SAP systems
- Improved system stability, as automations leverage built-in best practices
- Reduced cost of ownership, as fewer technical resources are required to manage your landscapes
- Technical team is freed up to focus on high-impact activities
- Reduced security risk; control sensitive operations with full compliance tracking
- Better operational agility (DevOps) through improved application lifecycle management and service validation framework

### Deliver SAP-as-a-Service

- Reduce maintenance effort, patches and upgrade management
- Improve testing and management of users and associated transports
- Meaningful monitoring and alerts, including proactive thresholds, allowing you to react quickly to reported issues
- Validate actions before they are performed to ensure consistency and minimize associated impacts
- Achieve compliance, auditability and governance across SAP management processes, with full audit logs

# Key features

## Automatic SAP provisioning

From training environments to project sandboxes, system copies and more, Unified Platform™ offers an end-to-end automation capability for provisioning, cloning and refreshing your SAP systems, including transport, user management, post copy or refresh automation activities.



The screenshot shows the 'Templates' section of the Unified Platform interface. A specific template, 'ECC6 EHP7 IDES', is selected and its configuration is displayed:

- Name \*:** ECC6 EHP7 IDES
- Product name \*:** NetWeaver\_DB6
- Data center \*:** Atlanta QTS
- Application type \*:** ABAP CI
- Database \*:** SAP HANA
- Operating system \*:** Linux

The left sidebar shows a tree view of templates, including 'Non SAP', 'SAP', 'Netweaver', '740', 'ECC6', and 'ECC6 EHP7 IDES'.

The 'Stop EQD' dialog box asks for confirmation to stop the system. It displays the following information:

- Are you sure you would like to invoke Stop on EQD?**
- Results for pre-validation checks performed on system EQD for this action:**

  - 6 Succeeded** (green)
  - 4 Failed** (red)

- Failed:**

  - SAP OS processes running:** Processes still running: R3trans.
  - Active database connections:** Active DB connections session ids: 10.210.12.10.50875.170602075313.
  - SAP work processes running:** Processes still running: SAPLSUGP and RSPARAGENERB.

- Stop system EQD:** A dropdown menu set to 'Now'.
- Buttons:** 'Cancel' and 'Force Stop'.

## Built-in guardrails

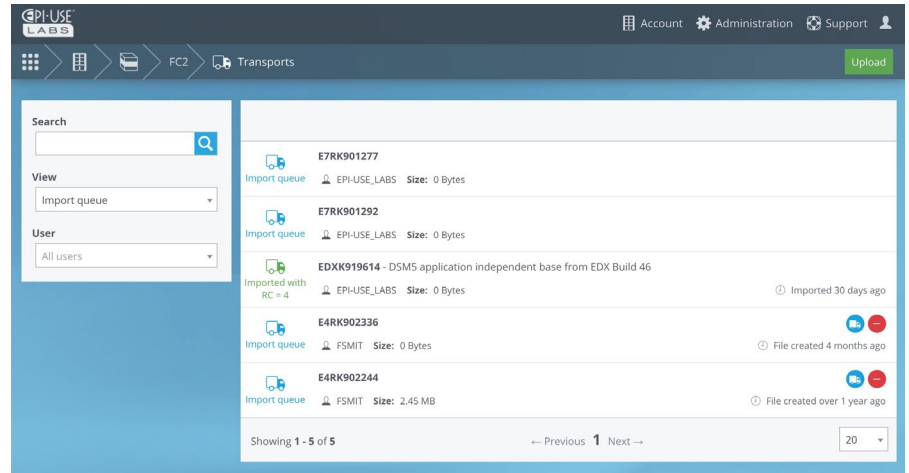
When performing operations and actions on systems, Unified Platform™ offers pre-validation checks to ensure the integrity of the environment is maintained. All activities and logs are stored for audit purposes. When high risk activities are undertaken, a two-factor authentication mechanism is employed for added security.

# Key features

## Application tasks management

Perform common SAP tasks reliably, using built-in actions that are delivered as part of the framework. Common SAP application tasks include:

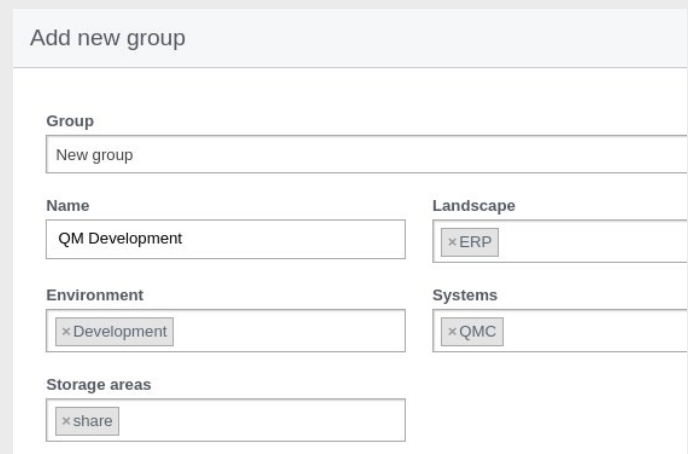
- Start/Stop/Pausing/Archiving Systems
- Snapshots of systems
- Editing and deleting of existing systems
- SAP Transport management
- User Management



## Integrated security and account management

Reduce your security risks with the platform through:

- Secure Credential Storage
- Automated VPN provisioning
- Ability to react quickly to reported issues via Unified Platform™ monitoring capabilities



## Infrastructure management

Unified Platform™ automates the management of the underlying infrastructure components, from Operating System, Database, Network, Application Servers, Storage Area Networks through to client and site-to-site VPN solutions.

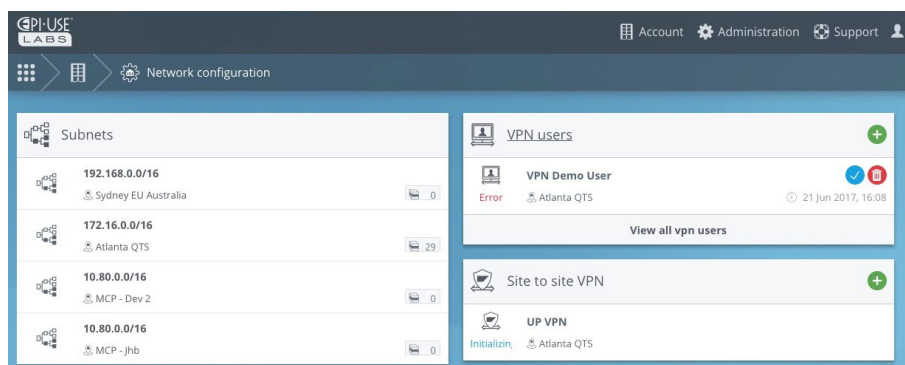
All data centre options are supported: On-premise, Private Cloud, Public Cloud or Hybrid scenarios.

### Connection details for VPN user "Michelle Peens"

Please select one of the following options:

- Send connection details to Michelle Peens (michelle@labs.epiuse.com).
- Send connection details to yourself.
- Download connection details.

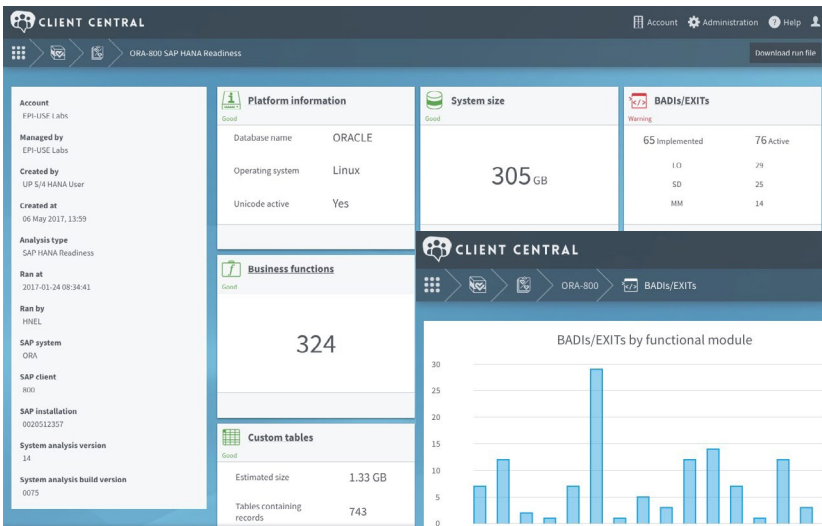
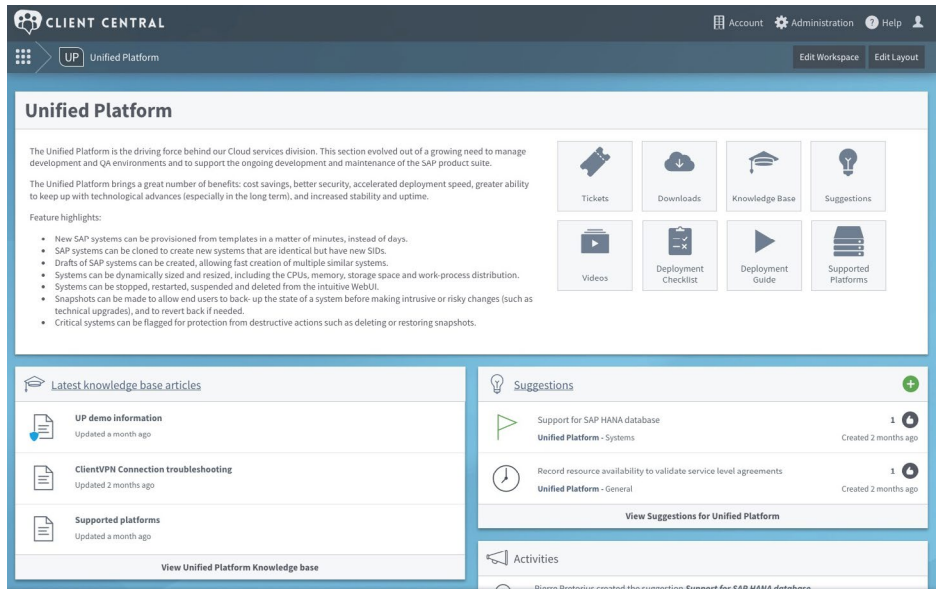
Cancel Send



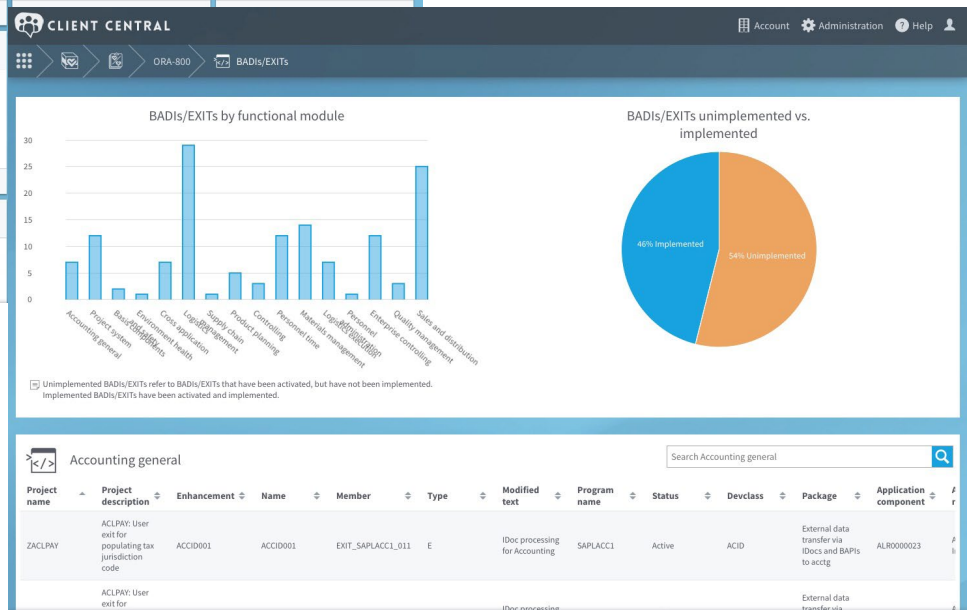


# Monitoring and reporting

Unified Platform™ offers visibility across your entire SAP landscape, and provides visual feedback to the performance and alerts across your environment - allowing faster issue identification and remediation. Automated SAP reports for: Short dumps, System Logs, SAP Jobs, SAP Processes, Active Users and SAP specific OS processes are available out of the box.



Additionally the platform can provide intelligent analysis and assessments (S/4 HANA Readiness assessment) of solutions that are running on Unified Platform.



## Get a personalized demo

The best way to experience Unified Platform™ is to see it in action. Request a personalized demo via our website: [www.epiuselabs.com](http://www.epiuselabs.com)