

# 2017 Audi A3/A3 E-Tron/ S3/RS3/TT: All Variants

## Shift Interlock Override



Set the parking brake and make the connections to the tow truck.

Shifter - TT: All variants



A3/A3 E-Tron/S3/RS3



Remove the shifter boot base from the trim bezel using a plastic trim tool.

Pull the boot inside out over the shift knob.



Depress the foot brake; press the yellow release inward; and then pull the shifter from Park.

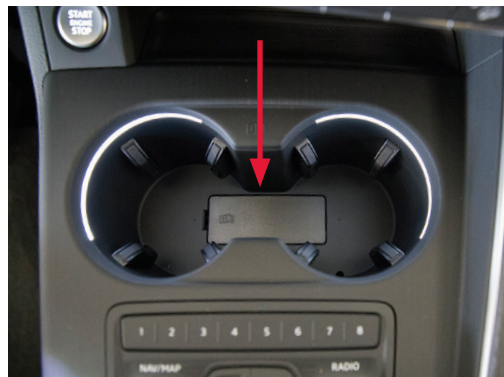
**Note:** Insulation may need to be pulled back to access the release.

# 2017 Audi A4/A5/S4/S5/ A4 Allroad: All Variants

## Shift Interlock Override



Set the parking brake and make the connections to the tow truck.



Remove the rubber in the mat in the cup holders.

Remove the cover to access the release.



Install the release lever (found under the load floor in the trunk with the tool kit).



Depress the foot brake and quarter turn the handle clockwise.

Park is disengaged.

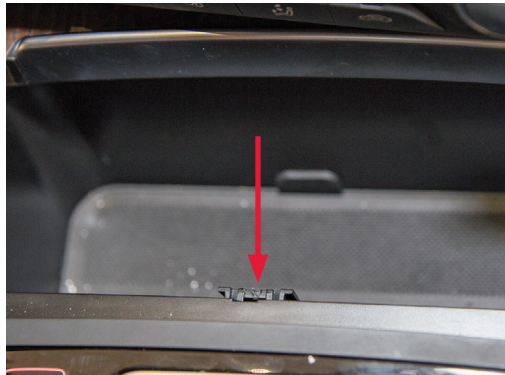
### 2017 A6/A7/S6/S7/RS7 Shift Interlock Override



Set the parking brake and make the connections to the tow truck.



Open the coin tray in front of the shifter.



Remove the cover in the coin tray to access the release.



Depress the foot brake; press down on the release with the trim tool; and then pull the shifter from park.



## 2017 Audi A8/S8 Shift Interlock Override



Set the parking brake and make the connections to the tow truck.



The release is located under the driver side floor mat.



Remove the cover.



Pull the release to disengage Park.

## 2017 Audi Q3

### Shift Interlock Override



Set the parking brake and make the connections to the tow truck.



Remove the shifter boot with the plastic trim tool as shown.



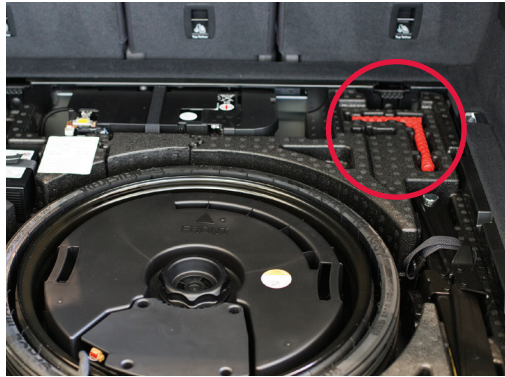
Depress the foot brake; depress the yellow release tab; and then pull the shifter from Park.

## 2017 Audi Q5/SQ5

### Shift Interlock Override



Set the parking brake and make the connections to the tow truck.



Retrieve the orange park release handle in the tool kit under the load floor.



On the driver side floor: insert the handle in the release.



Quarter turn the handle clockwise to disengage Park.

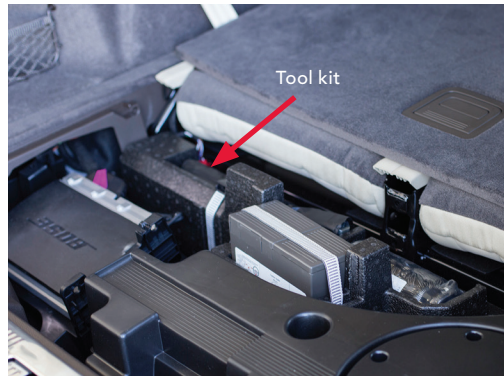


### 2017 Audi Q7 Shift Interlock Override



Set the parking brake and make the connections to the tow truck.

Retrieve the orange park release handle in the tool kit under the load floor.



On the driver side floor: insert the handle in the release.



Quarter turn the handle clockwise to disengage Park.