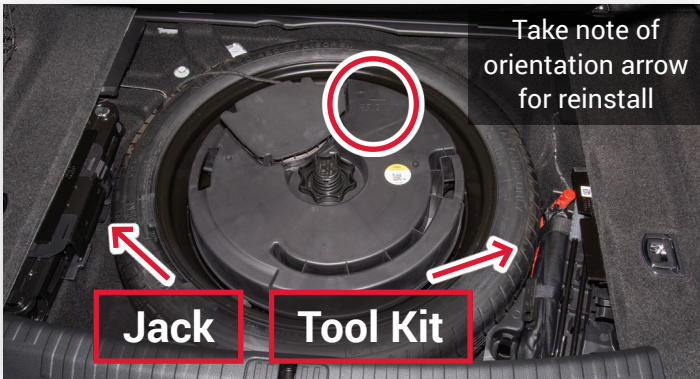


2019 Audi A6/S6

Towing & Roadside Information



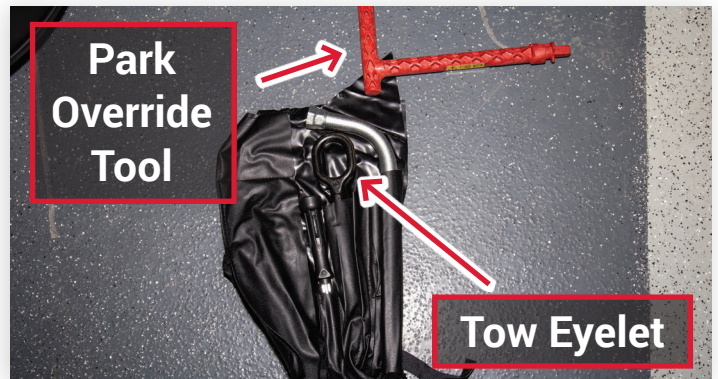
The subwoofer will need to be removed.



Unplug the subwoofer, and spin off the retainer nut to remove.



The tool kit is retained with a velcro strap.

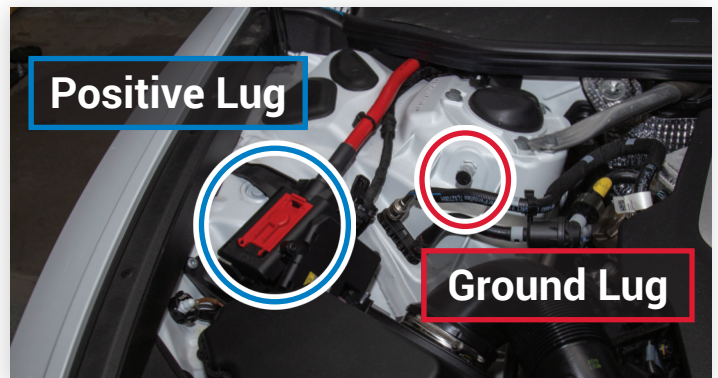


Tool Kit and Park Override Tool



On the front bumper, press the left side of the front eyelet cover to remove.

There is no rear eyelet.



Jump start procedure

