



18-0100234

**Migration**  
Height-Adjustable Desk / Bench

**Steelcase**





17-0098318

## A GLOBAL CHALLENGE

People are simply not moving enough throughout their workday. In fact, adults are sitting 50 – 70 percent of the time. This sedentary workstyle poses long-term physical challenges, from back and neck pain to repetitive stress injuries.

## Greater movement. Better thinking.

Providing workers with environments that support wellbeing is essential to the success of an organization. Migration™ height-adjustable desk/bench allows users to transition from seated to standing height postures throughout the day, stimulating mental and physical activity.



### OPTIMIZED DESIGN

With a purposeful design and T-shape leg, Migration ensures high performance for users by maintaining excellent quality standards. Migration makes planning and specifying easy by offering an optimized statement of line and a surface material palette curated to integrate into any office environment.



18-0100235

### ATTAINABLE WELLBEING

Migration provides users the flexibility to adapt their work posture throughout the day. This ensures healthy work modes. Features like intuitive controllers and the collision sensor allow safe and comfortable height adjustment for every user.



18-0106683

### AD HOC MEETINGS

Migration provides a place for ad hoc meetings and collaboration in a standing position away from traditional meeting areas. It encourages conversations in casual places for exchange and brainstorming.



18-0102321

## STATEMENT OF LINE

### Desk



Height range: 720-1200mm



Height range: 650-1250mm

### Bench



Height range: 720-1200mm



Height range: 650-1250mm

### Table top shapes - Straight/ Type 10- Melamine 25mm

	1400	1600	1800	2000
800				
900				

	1400	1600	1800	2000
1700 2 x 800 + 100 gap	00			
	800			

## UNIQUE DESIGN CHOICES



Migration offers four unique accent paint finishes for the legs and the edge banding:

- Wasabi
- Blue jay
- Tangerine
- Scarlet

## SURFACE MATERIALS

### Standard leg finishes:

- ☐ White C20
- ☐ Pearl Snow ZW
- ☐ Platinum Metallic SL
- ☐ Pearl Alu ZS
- ☐ Merle MG

### Worksurfaces are available in all Steelcase standard melamines.

Colours are representative and may vary slightly from actual material. For further options, visit us online.

## CONTROLLER OPTIONS

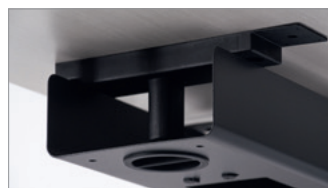


Up/Down User Interface



Programmable User Interface

## CABLE MANAGEMENT



The optional cable tray helps to create a clean aesthetic. Cable brackets are always included to manage cabling.

## ACCESSORIES



Screen on Desk



Orga-Rail



CPU Holder

By adding different accessories, Migration offers the possibility to customise your workplace and shape it as you want.

# Steelcase®

Visit [Steelcase.com](https://www.steelcase.com)

[facebook.com/Steelcase](https://facebook.com/Steelcase)

[twitter.com/Steelcase](https://twitter.com/Steelcase)

[youtube.com/SteelcaseTV](https://youtube.com/SteelcaseTV)