

Cloud 2½ seater sofa



Cloud sofa

Simplicity is the key word in the sofa range designed by Yonoh. The clean sharp lines and the thin, yet solid metal legs give the sofa an international, clean and minimalistic look. The sofa signals 'Less is more' and the excellent choice of fabrics, simplicity and superior comfort make Cloud a favourite in any design aficionado's home.



Yonoh

Design

Fabric
Baize - Fabric

Colour
Sand

Legs
Black lacquered steel

Specification

Depth
82 cm

Back height
75 cm

Seat depth
58 cm

Width
192 cm

Seat height
43 cm

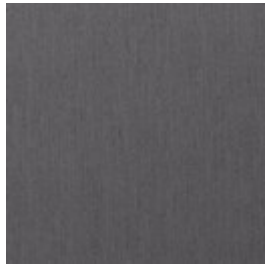
Material and colour

BAIZE - FABRIC

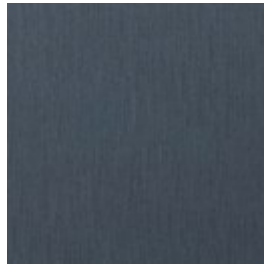
Baize is an extra soft upholstery fabric that provides superior comfort. The material has a beautiful, classic look that suits most furniture.



Antracit



Dark Grey



Dust Blue



Dust Green



Grey



Light Grey



Sand

LONDON - FABRIC

London is a strong upholstery fabric and comes in a variety of colors. It is a beautifully woven fabric with a pure and elegant look. London is 100% polyester.



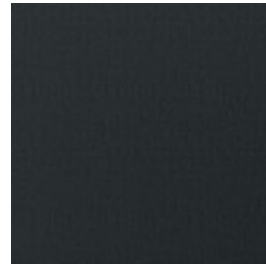
Blue



Brown



Burgundy



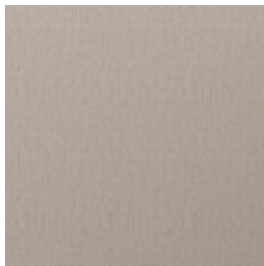
Dark Grey



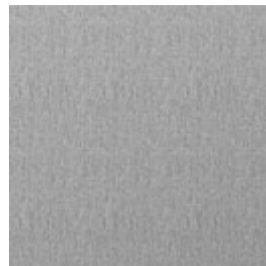
Dust Green



Grey Brown



Light Beige



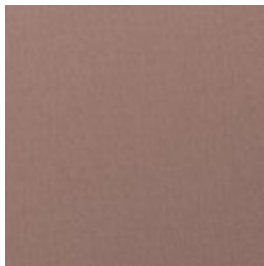
Light Grey



Mint



Multi Grey



Rosa



Sea green

Material and colour

QUAL - WOOL

Qual is woven from 100% pure new wool - specially developed for Bolia. The soft structure makes it comfortable and user-friendly. The wool's natural content of lanolin makes the fabric easy to keep clean.



Army Melange



Curry mel



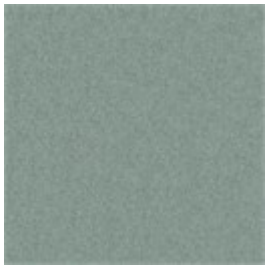
Dark Grey Melange



Grey Melange



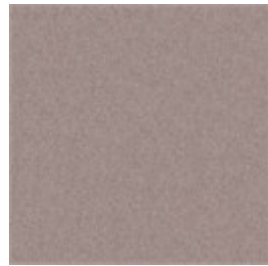
Light Grey Melange



Mint mel



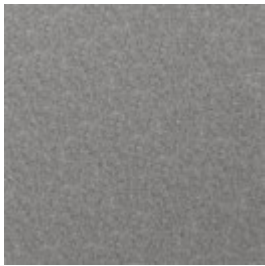
Navy Melange



Rose mel



Sea green



Stone Grey

MEMORY - FABRIC

Memory is an upholstery toned with three colours that give the fabric a totally unique character. A durable and hard-wearing fabric with a beautiful and elegant structure that not only adds an exclusive look to any piece of furniture, but is also soft and comfortable to sit in.



Blue

Material and colour

RITZ - VELVET

Ritz is a beautiful and velvety upholstery fabric. The velour fabric is exclusive in its appearance and its properties. Choose Ritz if you want a piece of furniture that stands out from the crowd.



Curry



Dark Blue



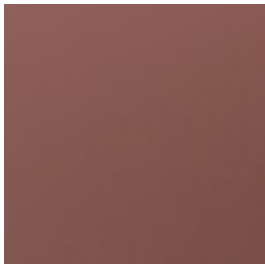
Forest Green



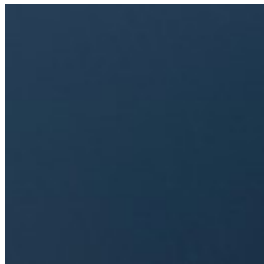
Grey



Light Grey



Light Rosa



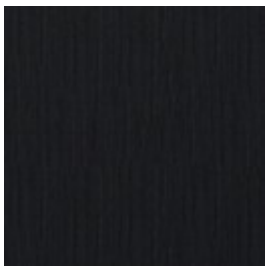
Petrol



Steel Grey

LAINÉ - WOOL

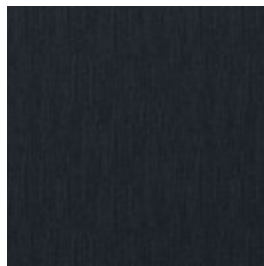
Laine is a very exclusive wool fabric consisting of 92% pure New Zealand wool and 8% polyamide. The elegant melange effect gives the fabric has a wonderfully vibrant look. Furthermore, it is Oeko-Tex certified and EU Eco-labelled.



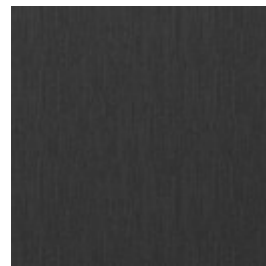
Antracit



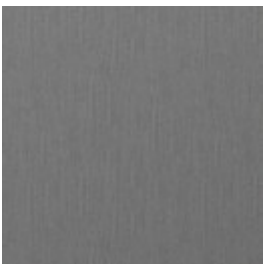
Beige



Dark Blue



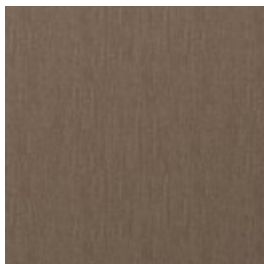
Dark Grey



Grey



Light Blue



Light Brown

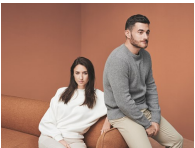
We are here to help

A dedicated phone number and e-mail address is available for you and your product inquiries:

Email: lineone-en@steelcase.com

Phone: +800 2000 4000

Cloud 3 seater sofa



Yonoh

Design

Fabric
Qual - Fabric

Colour
Dark Grey Melange

Legs
Black lacquered steel

Specification

Depth
82 cm

Back height
75 cm

Seat depth
58 cm

Width
222 cm

Seat height
43 cm

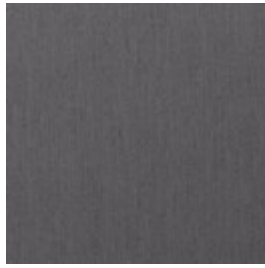
Material and colour

BAIZE - FABRIC

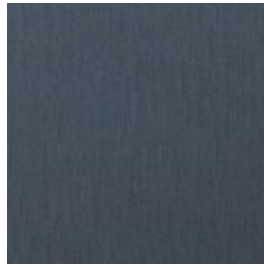
Baize is an extra soft upholstery fabric that provides superior comfort. The material has a beautiful, classic look that suits most furniture.



Antracit



Dark Grey



Dust Blue



Dust Green



Grey



Light Grey



Sand

LONDON - FABRIC

London is a strong upholstery fabric and comes in a variety of colors. It is a beautifully woven fabric with a pure and elegant look. London is 100% polyester.



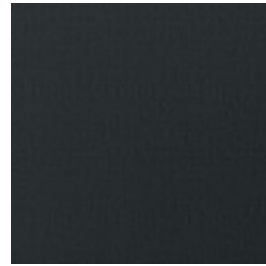
Blue



Brown



Burgundy



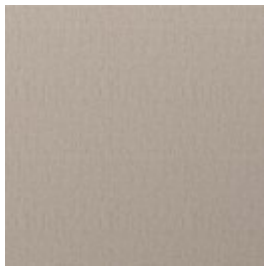
Dark Grey



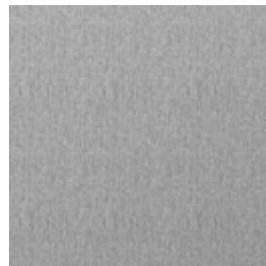
Dust Green



Grey Brown



Light Beige



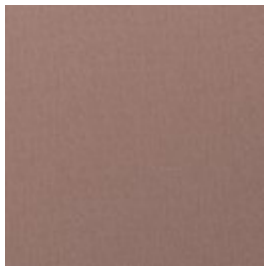
Light Grey



Mint



Multi Grey



Rosa



Sea green

Material and colour

QUAL - WOOL

Qual is woven from 100% pure new wool - specially developed for Bolia. The soft structure makes it comfortable and user-friendly. The wool's natural content of lanolin makes the fabric easy to keep clean.



Army Melange



Curry mel



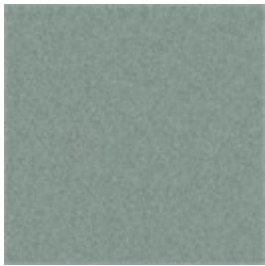
Dark Grey Melange



Grey Melange



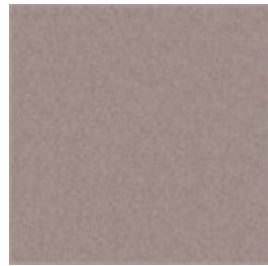
Light Grey Melange



Mint mel



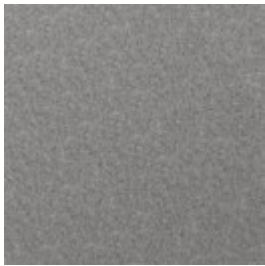
Navy Melange



Rose mel



Sea green



Stone Grey

MEMORY - FABRIC

Memory is an upholstery toned with three colours that give the fabric a totally unique character. A durable and hard-wearing fabric with a beautiful and elegant structure that not only adds an exclusive look to any piece of furniture, but is also soft and comfortable to sit in.



Blue

Material and colour

RITZ - VELVET

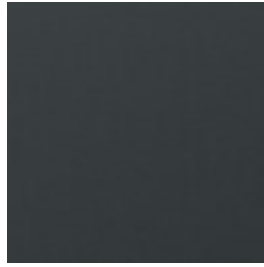
Ritz is a beautiful and velvety upholstery fabric. The velour fabric is exclusive in its appearance and its properties. Choose Ritz if you want a piece of furniture that stands out from the crowd.



Curry



Dark Blue



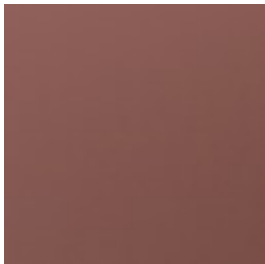
Forest Green



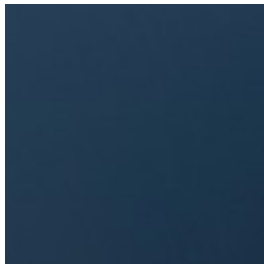
Grey



Light Grey



Light Rosa



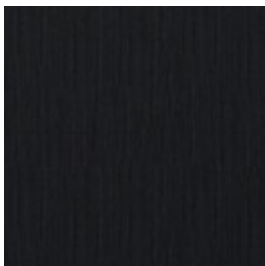
Petrol



Steel Grey

LAINÉ - WOOL

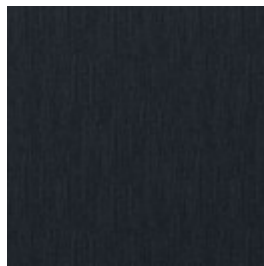
Laine is a very exclusive wool fabric consisting of 92% pure New Zealand wool and 8% polyamide. The elegant melange effect gives the fabric has a wonderfully vibrant look. Furthermore, it is Oeko-Tex certified and EU Eco-labelled.



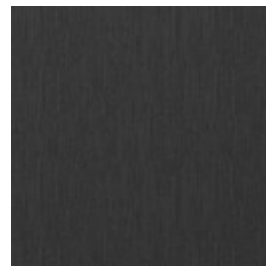
Antracit



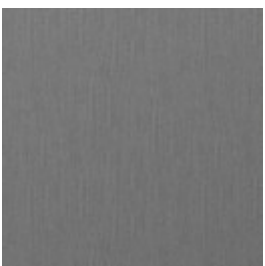
Beige



Dark Blue



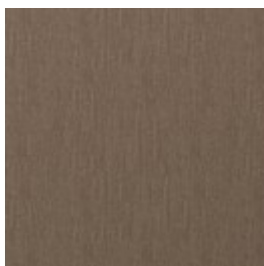
Dark Grey



Grey



Light Blue



Light Brown

We are here to help

A dedicated phone number and e-mail address is available for you and your product inquiries:

Email: lineone-en@steelcase.com

Phone: +800 2000 4000