

Pepe 3 seater sofa



kaschkasch

Design

Fabric
London - Fabric

Colour
Light Beige

Legs
Antracite lacquered steel

Specification

Depth
86 cm

Back height
79 cm

Seat depth
57 cm

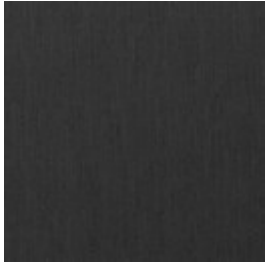
Width
239 cm

Seat height
42 cm

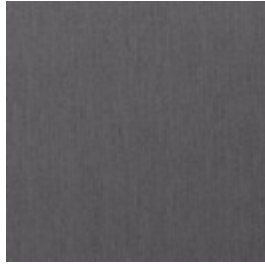
Material and colour

**BAIZE -
FABRIC**

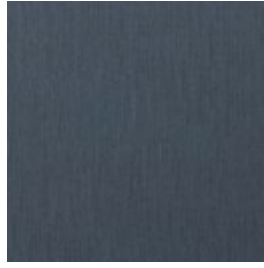
Baize is an extra soft upholstery fabric that provides superior comfort. The material has a beautiful, classic look that suits most furniture.



Antracit



Dark Grey



Dust Blue



Dust Green



Grey



Light Grey



Sand

**LONDON -
FABRIC**

London is a strong upholstery fabric and comes in a variety of colors. It is a beautifully woven fabric with a pure and elegant look. London is 100% polyester.



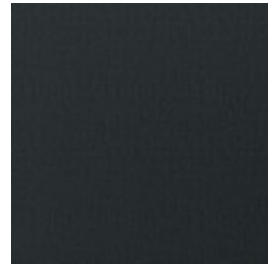
Blue



Brown



Burgundy



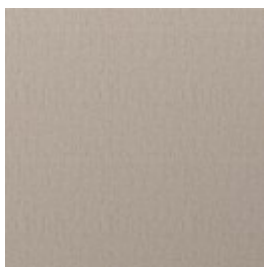
Dark Grey



Dust Green



Grey Brown



Light Beige



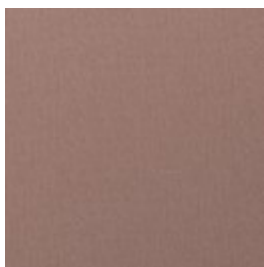
Light Grey



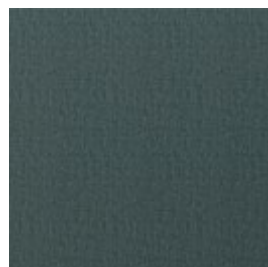
Mint



Multi Grey



Rosa



Sea green

Material and colour

QUAL - WOOL

Qual is woven from 100% pure new wool - specially developed for Bolia. The soft structure makes it comfortable and user-friendly. The wool's natural content of lanolin makes the fabric easy to keep clean.



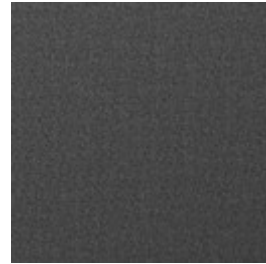
Army Melange



Curry mel



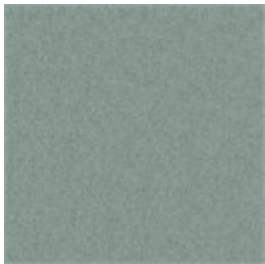
Dark Grey Melange



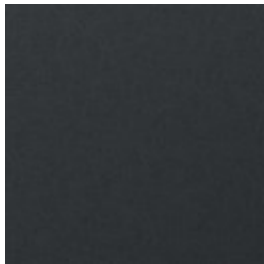
Grey Melange



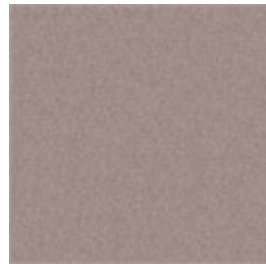
Light Grey Melange



Mint mel



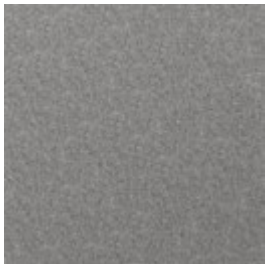
Navy Melange



Rose mel



Sea green



Stone Grey

MEMORY - FABRIC

Memory is an upholstery toned with three colours that give the fabric a totally unique character. A durable and hard-wearing fabric with a beautiful and elegant structure that not only adds an exclusive look to any piece of furniture, but is also soft and comfortable to sit in.



Blue

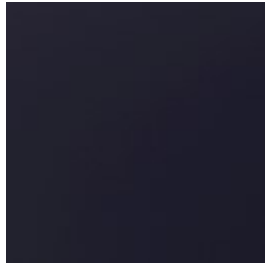
Material and colour

RITZ - VELVET

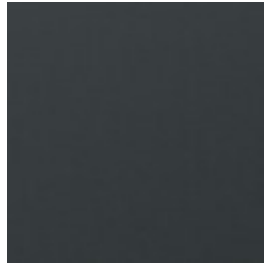
Ritz is a beautiful and velvety upholstery fabric. The velour fabric is exclusive in its appearance and its properties. Choose Ritz if you want a piece of furniture that stands out from the crowd.



Curry



Dark Blue



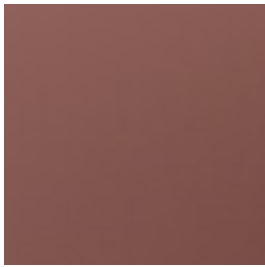
Forest Green



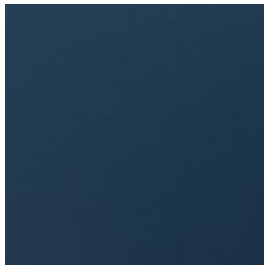
Grey



Light Grey



Light Rosa



Petrol



Steel Grey

LAINÉ - WOOL

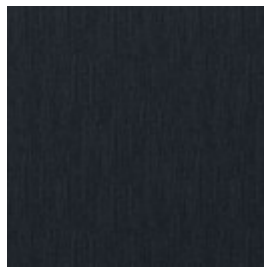
Laine is a very exclusive wool fabric consisting of 92% pure New Zealand wool and 8% polyamide. The elegant melange effect gives the fabric a wonderfully vibrant look. Furthermore, it is Oeko-Tex certified and EU Eco-labelled.



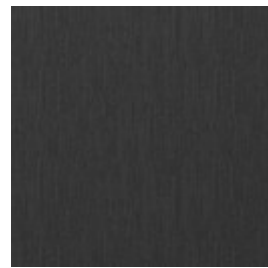
Antracit



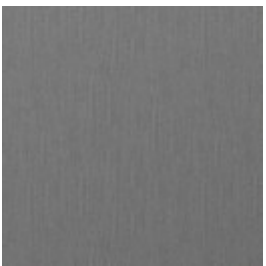
Beige



Dark Blue



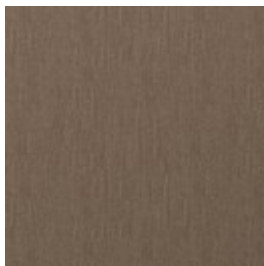
Dark Grey



Grey



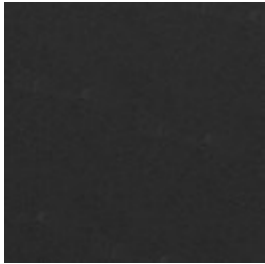
Light Blue



Light Brown

Material and colour

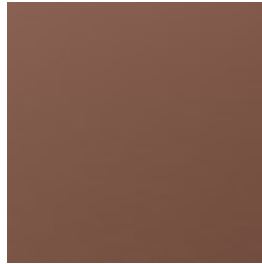
QUATTRO Quality leather from European cattle. Quattro traceable leather is tanned without the use of **TRACEABLE** chrome and can always be traced back to the cattle's area of origin. The leather is lightly surface **- LEATHER** treated and dyed, which ensures the appearance and colour of the leather.



Black



Brown



Cognac



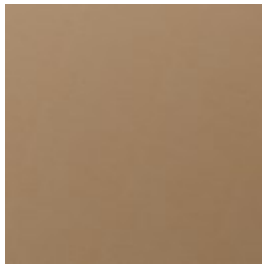
Dark Brown



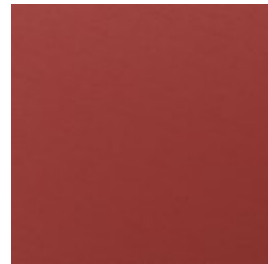
Grey



Ice



Nougat



Red



White

Legs



Antracite lacquered
steel



Grey lacquered
steel

We are here to help

A dedicated phone number and e-mail address is available for you and your product inquiries:

Email: lineone-en@steelcase.com

Phone: +800 2000 4000