

PowerShield8

Link battery management software



Link

Turning your battery data into actionable insight

Link battery management software

A component of PowerShield 8, Link battery management software is your window into the health and performance of your battery backups, enabling you to make informed decisions quickly and proactively.

Bundled with your PowerShield 8 system, the Link software application manages the Controller and records all battery readings in its database for viewing, trending and reporting. This enterprise standard product enables comprehensive monitoring from a single control point – whether it be for batteries held in a single room through to large numbers of batteries held across multiple facilities or countries.

Data is turned into actionable information in the form of alerts and dashboards by Link, as well as sending key information to control room and facility management systems. Link is available across sites and to multiple users, with no additional licensing or costs.

Talk to your PowerShield representative about our monthly Reporting Service which provides expert analysis of your battery monitoring data.

More than simply notifying you of alarms, Link software provides:

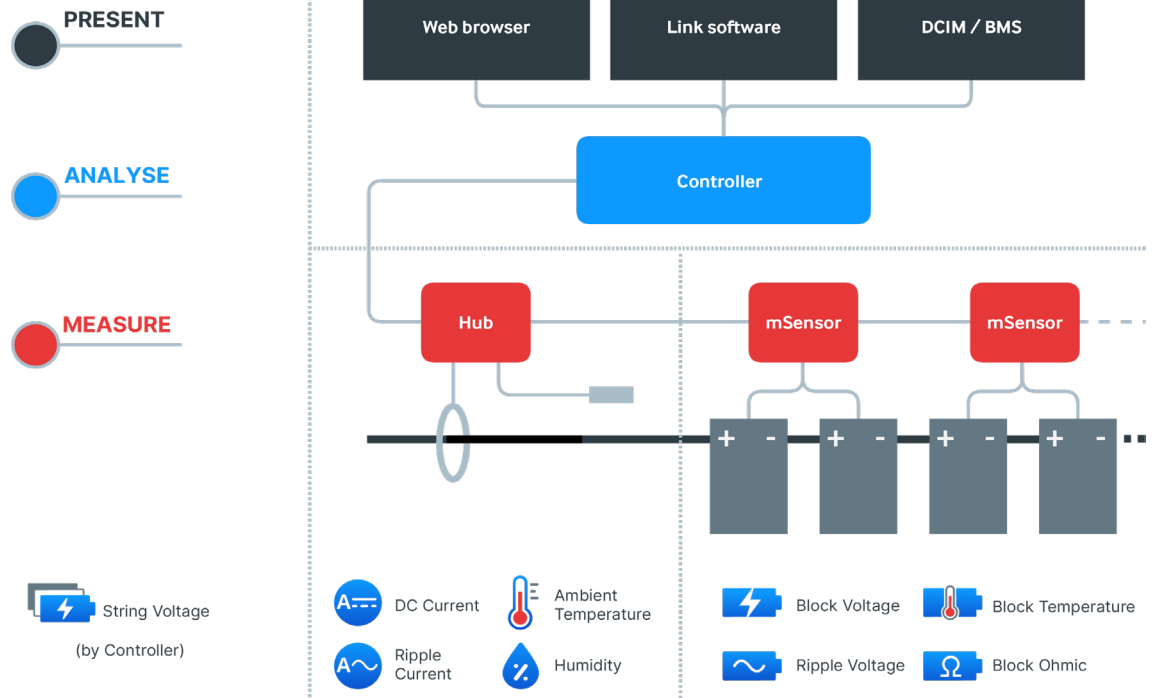
- *Permanent connection to multiple sites: for unlimited number of batteries*
- *Real time battery status, including discharge*
- *Remote access via LAN*
- *Alarm and activity log*
- *Email alarm alerts*
- *Battery database for life trending*
- *Graphing and analysis tools*
- *Automated data management*
- *Comprehensive user report set*
- *Preformatted PDF or raw CSV data*
- *Facility summary*
- *Discharge – individual events in detailed activity summary*
- *Trending – impedance change, end-of-life, charge voltage, temperature*
- *Alarm history, fault tracking, service log*
- *Warranty claim support documentation*
- *Reports suitable for management and service teams*

PowerShield 8: the modular battery management system

The Controller is at the heart of the PowerShield 8 system, a complete solution of hardware and software for monitoring an unlimited number of batteries. PowerShield 8 ensures maximum availability of your battery backup, while ensuring you get the most out of your battery investment.

| | | | |
|------------------------------|---|---|--|
| MEASURE with mSensors | Gather individual voltage, impedance (Ohmic value) and temperature data, for VRLA, VLA and Ni-Cd batteries. | PROCESS with the Controller | At the heart of PowerShield 8, the Controller captures, processes and stores data from the battery sensors. |
| RELAY with the Hub | Applied per battery string, the Hub takes inputs from in-built sensors and sensors at the battery rack and consolidates for transfer to the Controller. | MONITOR AND ANALYSE with Link software | Comprehensive monitoring from a single control point, from batteries held in a single room through to large numbers of batteries held across multiple facilities or countries. |

Component-Diagram



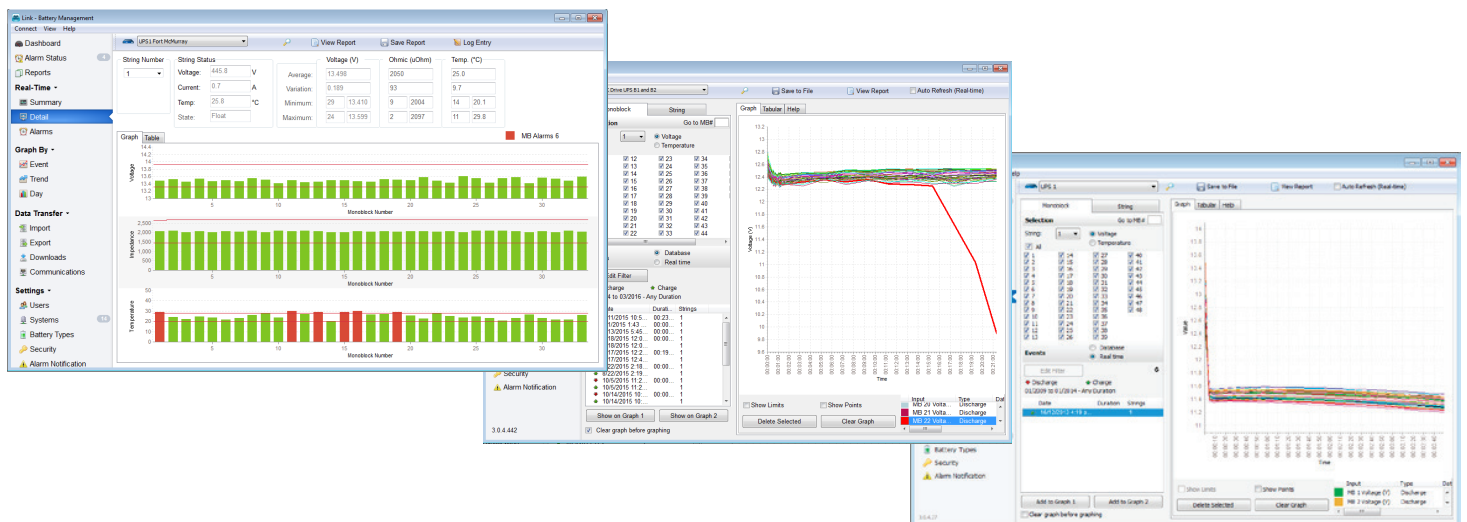
Link Battery Management Software

Minimum PC system requirements¹

| | |
|------------------|--|
| Processor | Intel i3-8100 or faster |
| Operating system | Windows 10 or 11 Windows Server 2012 R2, 2016, 2019 or 2022 |

| | |
|---------|--------------------------------|
| RAM | 8GB |
| Storage | 20GB available hard disk space |
| Monitor | 1024 x 768 or 1366 x 768 |

¹Recommended for up to 5 Controller connections, with single seat operation.



Screenshots of Link software in action.

About PowerShield

PowerShield specialises in the design, manufacture, installation and operation of advanced battery monitoring systems for organisations with critical services that rely on continuous power. PowerShield provide the most advanced and most cost-effective tools for monitoring and managing stand-by battery banks. PowerShield's continuous data sampling, reporting and battery management capability delivers reduced costs, peace of mind that you have batteries that perform when needed, and you are maximising the life of your batteries.