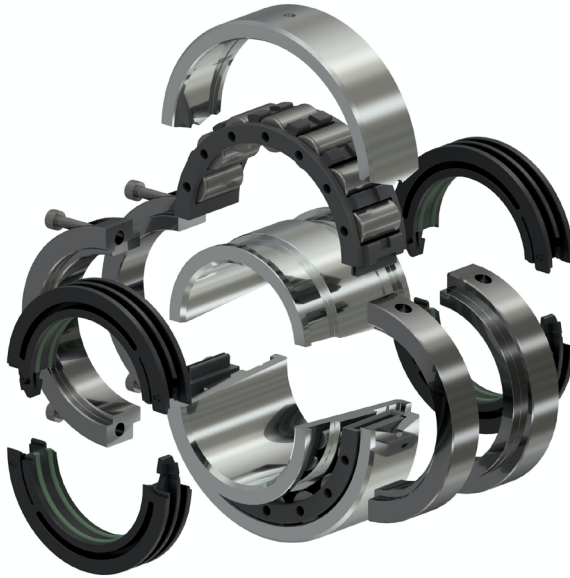




Enhanced Replacement Split Roller Bearings and Seals



**Fits SKF Cooper™, Timken SRB™
and Craft™ Split Bearing Housings**

www.johnhandleybearings.co.uk



Reprint only with written authorisation from John Handley Bearings.

Every care has been taken to ensure the accuracy of the data contained in this catalogue.

No liability can be accepted for loss or damage suffered through errors or omissions.

ROLLERTRAIN® and SEALTRAIN® are registered trademarks of

Bowman International Limited. Patents Pending.

John Handley Bearings is a division of Bowman International Limited.

JHB reserves the right to change specifications without prior notice.

SKF Cooper is a registered trademark of SKF Cooper Roller Bearings Co Ltd

Timken SRB is a registered trademark of The Timken Company, North Canton Ohio USA

Craft is a registered trademark of Craft Bearings Company, INC

Replacement Bearings

John Handley Bearings have now introduced two new series (C and CA) to directly replace other manufacturers split roller bearings, with the added advantage of increased capacities. With all critical mounting dimensions equivalent to the other brands, C and CA bearings can fit directly into existing manufacture's cartridges. Using our 3D printed patented cage design we can exceed the capacities of the existing market leader by **up to 26%**, resulting in longer bearing L10 life (of up to double), reduced downtime and increased productivity.

- ▶ Increased radial, static and axial capacities
- ▶ Unique self-jointing cage technology with no loose parts
- ▶ Uses existing cartridges – no need to replace
- ▶ Dimensionally interchangeable with other brands – no modifications required
- ▶ Designed and manufactured in the UK

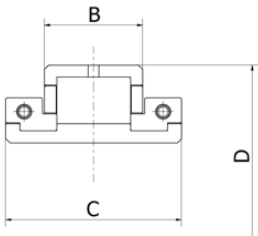
Maintaining all the benefits of split to the shaft bearings and with increased life, the JHB replacement range covers '01/01E/Light' from 30mm to 300mm (1.3/16" to 12") shaft sizes and '02/02E/Medium' from 190mm to 300mm (7 15/16" to 12") shaft sizes.



C Series

Dimensions

Replacement for 01/01E (SKF Cooper™),
Light (Timken SRB™) and S1 (Craft™) Series



Group Size	B	C	D Ø
108	23.8	50.1	84.14
200	25.4	55.7	98.42
208	27.0	55.7	114.30
300	31.8	61.2	133.35
308	38.9	70.7	152.40
400	45.3	81.0	174.62
408	46.9	84.9	203.20
500	54.0	89.7	222.25
508	55.6	98.4	241.30
600	55.6	98.4	254.00

Group Size	B	C	D Ø
608	60.3	109.0	273.05
700	55.5	109.0	285.75
800	60.3	109.0	311.15
900	63.5	115.0	342.90
1000	66.7	122.0	374.65
1100	69.0	128.0	406.40
1200	74.6	143.0	438.15

Capacities & Size Range

108 - 1200 Replacement with 01/01E/Light/S1 Series

JHB Higher Ratings Shown in Yellow - Competitor's Ratings Shown in Grey

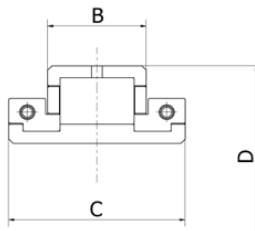
Group Size	Bearing Bore Ø		Capacities			Speed rpm	Part Number FREE / FIXED	
	(mm)	(inch)	Radial		Axial		(mm)	(inch)
			Dynamic Cr kN	Static Cor kN	Dynamic Ca kN			
108	30mm 35mm 40mm	1. 3/16" 1. 1/4" 1. 7/16" 1. 1/2"	80	85	4.0	5400	CB030M CB035M CB040M	CB103 CB104 CB107 CB108
			67	67	3.2			
200	45mm 50mm	1. 11/16" 1. 3/4" 1. 15/16" 2"	112	130	4.6	4630	CB045M CB050M	CB111 CB112 CB115 CB200
			95	105	3.8			
208	55mm 60mm 65mm	2. 3/16" 2. 1/4" 2. 7/16" 2. 1/2"	155	189	8.6	3940	CB055M CB060M CB065M	CB203 CB204 CB207 CB208
			135	157	7.2			
300	70mm 75mm	2. 11/16" 2. 3/4" 2. 15/16" 3"	190	236	12.9	3310	CB070M CB075M	CB211 CB212 CB215 CB300
			166	197	10.8			

Group Size	Bearing Bore Ø		Capacities			Speed rpm	Part Number FREE / FIXED	
	(mm)	(inch)	Radial		Axial		(mm)	(inch)
			Dynamic Cr kN	Static Cor kN	Dynamic Ca kN			
308	80mm 85mm 90mm	3. 3/16" 3. 1/4" 3. 7/16" 3. 1/2"	242	314	14.3	2790	CB080M CB085M CB090M	CB303 CB304 CB307 CB308
			234	299	13.6			
400	95mm 100mm 105mm	3. 11/16" 3. 3/4" 3. 15/16" 4"	328	438	20.6	2340	CB095M CB100M CB105M	CB311 CB312 CB315 CB400
			320	421	19.6			
408	110mm 115mm	4. 3/16" 4. 1/4" 4. 7/16" 4. 1/2"	358	503	21.9	1970	CB110M CB115M	CB403 CB404 CB407 CB408
			306	407	18.6			
500	120mm 125mm 130mm	4. 11/16" 4. 3/4" 4. 15/16" 5"	446	648	26.3	1740	CB120M CB125M CB130M	CB411 CB412 CB415 CB500
			355	484	22.6			
508	135mm 140mm	5. 3/16" 5. 1/4" 5. 7/16" 5. 1/2"	464	679	30.5	1570	CB135M CB140M	CB503 CB504 CB507 CB508
			394	542	25.8			
600	150mm 155mm 600/160mm	5. 11/16" 5. 3/4" 5. 15/16" 6"	499	762	34.3	1450	CB150M CB155M CB600/160M	CB511 CB512 CB515 CB600
			428	616	29.4			
608	160mm 608/170mm	6. 7/16" 6. 1/2"	660	993	67.0	1320	CB160M CB608/170M	CB607 CB608
			594	863	56.5			
700	170mm 175mm 180mm	6. 15/16" 7"	627	989	60.3	1220	CB170M CB175M CB180M	CB615 CB700
			557	845	52.2			
800	190mm 200mm	7. 15/16" 8"	698	1116	76.1	1070	CB190M CB200M	CB715 CB800
			679	1078	72.5			
900	220mm 230mm	9"	734	1234	83.8	930	CB220M CB230M	CB900
			715	1191	79.8			
1000	240mm 250mm 1000/260mm	10"	861	1498	101.4	820	CB240M CB250M CB1000/260M	CB1000
			804	1367	96.6			
1100	260mm 270mm 275mm 280mm	11"	949	1636	133.4	730	CB260M CB270M CB275M CB280M	CB1100
			917	1560	127			
1200	290mm 300mm	12"	1090	2011	146.0	650	CB290M CB300M	CB1200
			1041	1885	139			

Dimensions

Replacement for 02E (SKF Cooper™),
Medium (Timken SRB™) and S2 (Craft™) Series

Group Size	B	C	D Ø
800	90.5	156.0	368.30
900	90.5	163.0	393.70
1000	96.8	170.0	431.80
1100	101.6	186.0	463.55
1200	103.2	193.0	495.30



Capacities & Size Range


800 - 1200 Replacement with 02E/Medium/S2 Series

JHB Higher Ratings Shown in Yellow - Competitor's Ratings Shown in Grey

Group Size	Bearing Bore Ø		Capacities			Speed rpm	Part Number FREE / FIXED	
	(mm)	(inch)	Radial		Axial		(mm)	(inch)
			Dynamic Cr kN	Static Cor kN	Dynamic Ca kN			
800	190mm	7. 15/16"	1172	1693	128	960	CAB190M	CAB715
	200mm	8"	1137	1627	122		CAB200M	CAB800
900	220mm	9"	1272	1939	145	850	CAB220M	CAB900
	230mm		1233	1863	138		CAB230M	
1000	240mm	10"	1385	2061	175	750	CAB240M	CAB1000
	250mm		1346	1986	167		CAB250M	
1100	260mm					670	CAB260M	
	270mm	11"	1586	2521	200		CAB270M	
1200	275mm		1545	2435	190	610	CAB275M	CAB1100
	280mm		1705	2831	225		CAB280M	
1200	290mm	12"	1660	2735	214		CAB290M	CAB1200
	300mm						CAB300M	

Part Number & Referencing

Ordering a JHB split bearing is simple when you have the reference of the existing bearing you wish to replace, using the following examples:

Part Number Comparison	SKF Cooper™	Timken SRB™	Craft™	
Series Reference	01 / 01E	Light	S1	C
	02 / 02E	Medium	S2	CA
Type of Bearing	EX	BX (Bearing Expansion)	FL (Floating)	FREE
	GR	BR (Bearing Retained)	HD (Held)	FIXED
Units				
Metric (mm)	M	M	mm	M
Imperial		E		
Examples				
Bearing (Metric)	01EB100MEX	LSM100BX	S1B100mmFL	CB100MFREE
	01EB100MGR	LSM100BR	S1B100mmHD	CB100MFIXED
Bearing (Imperial)	02B215EX	HSE215BX	S2B215FL	CAB215FREE
	02B215GR	HSE215BR	S2B215HD	CAB215FIXED
Bearing / Shaft Size				
Metric	Reference using the shaft size in millimetres mm			
Imperial	Reference using the shaft size in inches. The last two digits are always the number of sixteenths. In a 3 digit reference number; the first number is the whole inch, in a 4 digital reference number; the first two numbers are the whole inch.			
	Imperial Examples	215	2. 15/16"	
		1100	11"	
		615	6 15/16"	

Replacement seals to suit existing housings can be ordered from JHB.
Simply advise us of the seal type and its shaft diameter.

Our range includes:

- Felt Seals

F
- High Temperature

HT
- SealTrain® Composite Triple Labyrith Seals

CTL
- SealTrain® Composite Lip Seal

CLS



For details on fitting bearings and housings, refer to housing manufacturer’s catalogues (also for further information on screw sizes and relevant tightening torques).



Potesta & Company

Leveraging the power of a global economy

Contact: Potesta & Company LLC

info@slewpro.com www.slewpro.com

Phone: +1 (330) 633-7735 **Fax:** +1 (330) 633-7745

Potesta & Company LLC

1239 Hudson Gate Dr,

Hudson, OH 44236, USA

Technical support: engineering@johnhandleybearings.com

Product website: www.jhbsplitbearings.com

Company website: www.johnhandleybearings.com

Bowman International Limited: www.bowman.co.uk

Bowman Additive Production: www.bowmanap.com

Errors and Omissions Excluded



Designed and Manufactured in the UK