

Templated Chiller Plants

*“Because the Templated
Chiller Plants come as
repeatable, pre-engineered
designs, they are available
with very competitive
lead times, using high
quality components at
favorable prices.”*



Templated Chiller Plants

Systecon[®] Inc.

www.systecon.com

6121 Schumacher Park Drive

West Chester, OH 45069 • (513) 777-7722

Systecon[®] Inc.

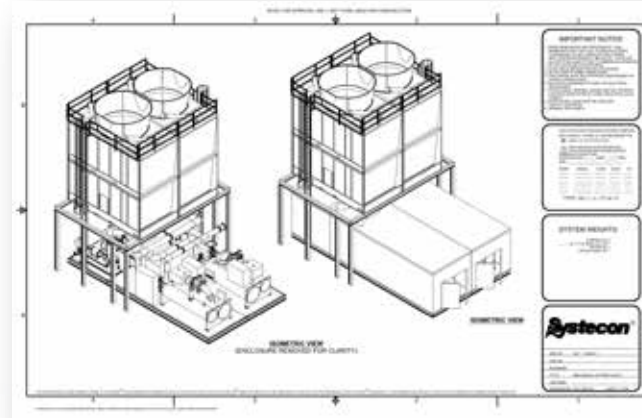
Modular HVAC Systems

Templated Chiller Plants

Templated Chiller Plants

Systecon offers a line of pre-engineered chiller plants for a variety of applications. These packages are templated designs available at incremental sizes up to 2000 tons. Because the Templated Chiller Plants come as repeatable, pre-engineered designs, they are available with very competitive lead times, using high quality components at favorable prices. Customers purchase a complete, factory tested product reducing the time, money, and hassle that come with installing a chilled water plant.

By using these designs, time can be saved determining overall fit, scope and budget of the plant. Customization can then occur to engineer in additional items using a variety of components to satisfy the unique requirements of the project.



Increased Productivity

Systecon Templated Chiller Plants offer speed and convenience during several phases of the project. Proposals, pricing, equipment selection, and specifications for each plant are already completed, allowing design times to be drastically reduced.

Once design is complete, construction can immediately begin in our facility regardless of site availability. The plant is completed in parallel with the rest of the project resulting in reduced lead times. Upon completion each system is factory tested to assure its quality, and installation time is greatly reduced due to the modular design of the plant.



Typical Components

The scope for a Systecon Templated Chiller Plant includes, but is not limited to:

- Chillers
- Cooling Towers
- Chilled Water Pumps
- Condenser Water Pumps
- System Piping
- Factory Testing
- Piping Specialties
- Enclosure and Base
- Cooling Tower Support Structure
- Electrical Components and Provisions
- Systecon SCRIPT PLC Controls with Interactive Optimization™

