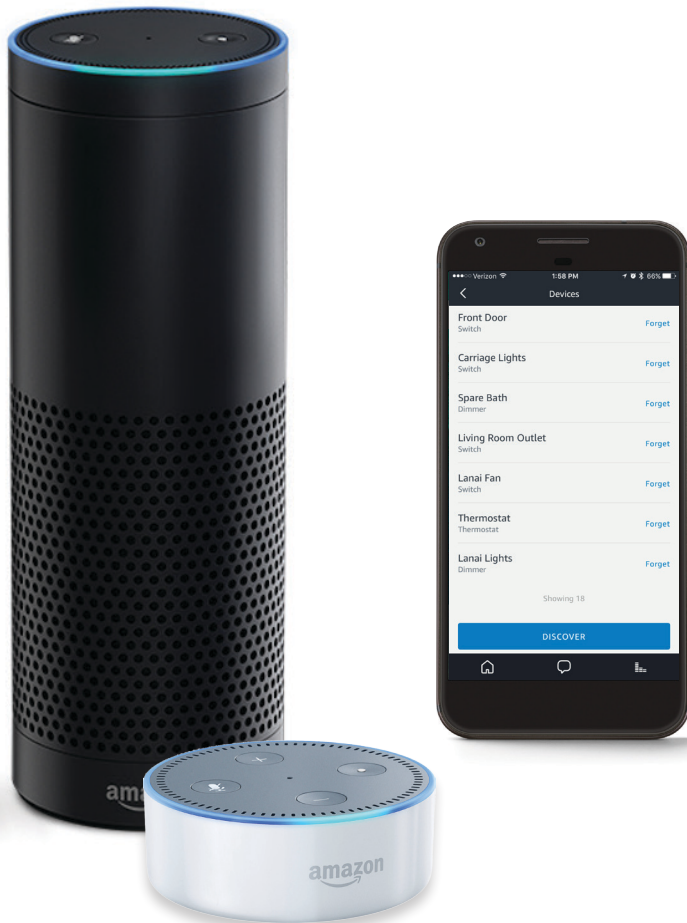


Using Amazon Alexa and ClareHome







"Alexa, turn on living room lights." Add Amazon Echo to your ClareHome system to experience true voice-activation of your smart home devices!



Using Amazon Echo and the voice dictation from Alexa, easily control your Clare smart home without opening your phone or lifting a finger!



Alexa + ClareHome uses voice dictation to control lights, locks, and thermostats.



Alexa can also run all of your favorite ClareHome Scenes. Easily start your Good Morning or Movie Time Scenes by just telling Alexa.



Want Alexa to control your security system, audio, or TVs? Incorporate additional devices into a custom Scene for ultimate control.

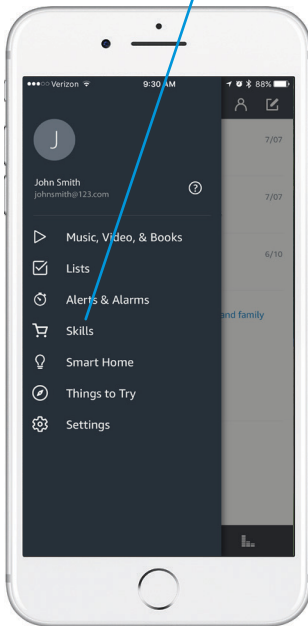


Download ClareHome and Amazon Alexa Apps for iOS devices and Android phones

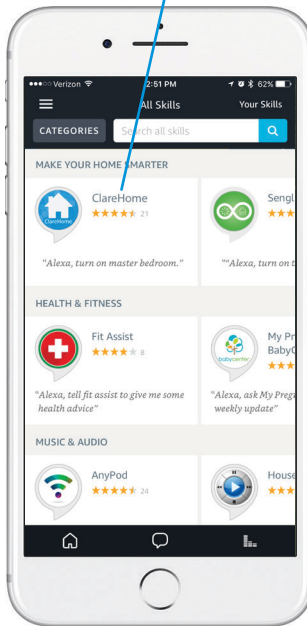
Downloading The Alexa App and Enabling the ClareHome Skill

Getting started with Alexa and ClareHome is simple and only takes a moment. Simply download the Amazon Alexa App, tap on Skills, search for ClareHome, and download the skill.

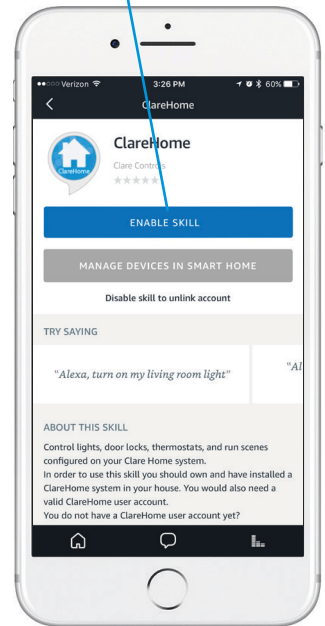
After downloading the Amazon Alexa App, tap on the menu icon and then on Skills.



Next, search for and download the ClareHome skill



Tap enable skill to activate the ClareHome Alexa skill.



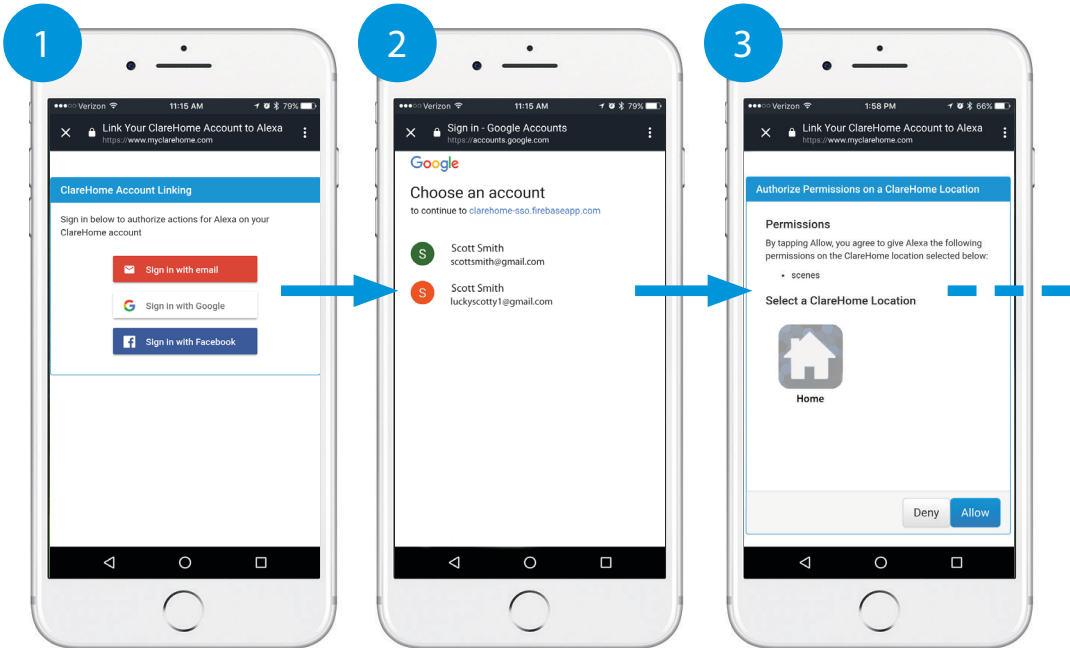
Note: You'll need to create an Amazon account if one hasn't previously been created.

Enabling the ClareHome skill gives Alexa control over your smart home devices.

Note: Downloading and installing the ClareHome skill is required to use Amazon Alexa with your Clare smart home. Amazon Echo and Echo Dot both support full voice control of your smart home devices.

Authorizing ClareHome and Discovering Smart Home Devices

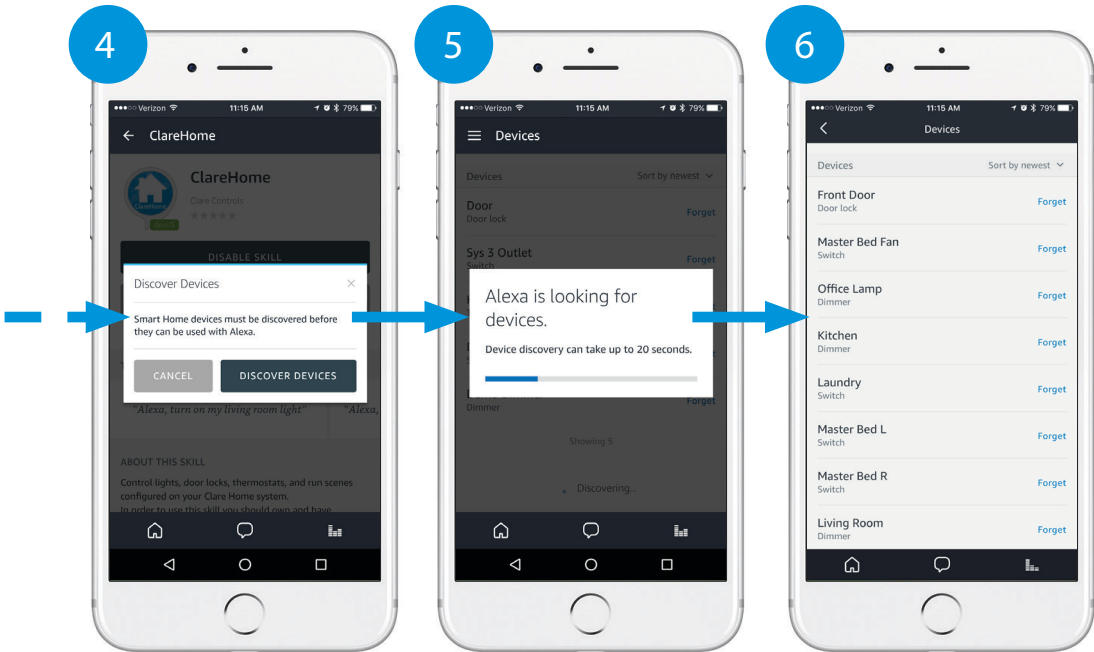
After installing the skill, you'll need to authenticate your Clare smart home by signing in with your ClareHome account information. If you have more than one system, you will need to choose which location you wish to enable Alexa voice control.



Sign into your ClareHome account (Email, Google, or Facebook)

If signing in using Google, select the appropriate account.

Next, select your desired ClareHome location and tap allow.
















Follow the on-screen instructions to discover all supported smart home devices. Once this process is finished, a Device list appears showing all supported and installed devices. Device discovery generally does not take longer than 20 seconds.

Using Alexa to Control ClareHome



Currently, Alexa and ClareHome supports control of lights, locks, thermostats, and Scenes. Below is a list of the supported devices and a list of phrases that can be dictated to control each device. **Note:** Each phrase needs to be spoken to Alexa using the correct phrasing. Refer to the supported phrases below to learn more.

List of Supported Devices	Supported Alexa Phrases
Thermostats      	"Alexa, set my (thermostat name) to 72 degrees." "Alexa, increase the temperature by 5 degrees." "Alexa, decrease the temperature by 3 degrees." "Alexa, turn down my (thermostat name)." "Alexa, cool down/heat up the (thermostat name)." "Alexa, what is the (thermostat name) temperature?"
Lighting   	"Alexa, turn on my (light name)." "Alexa, turn off my (light name)." "Alexa, set my (light name) dimmer to 50 percent." "Alexa, turn on my (light name) dimmer to 10 percent." "Alexa, is my kitchen light on?"
Door Locks   	"Alexa, lock my (door lock name)." "Alexa, is my (door lock name) locked?" "Alexa, is my (door lock name) unlocked?"
Scenes 	"Alexa, turn on (scene name)." <u>Examples of Scene phrases:</u> "Alexa, turn on Good Morning." "Alexa, turn on Good Night." "Alexa, turn on Movie Time." "Alexa, turn on Vacation."

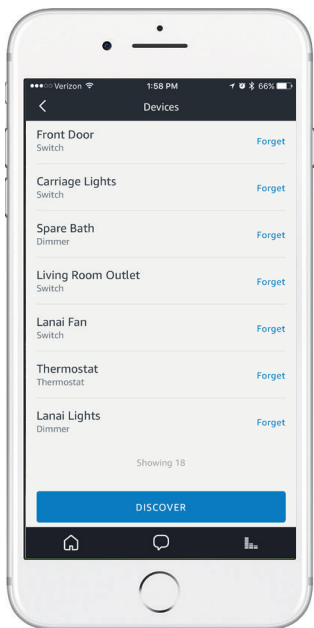
Note: Alexa + ClareHome supports control over security systems, audio, entertainment, and more, ONLY if these devices are included in a ClareHome scene. Scenes may be created from the ClareHome App. Advanced Scenes must be created by an authorized Clare dealer.

Renaming Smart Home Devices to Work with Alexa

Alexa may not be able to control devices if: the device is labeled with letters or initials, two devices have the same name, or when a device is labeled as one word instead of two. Refer to the chart below for examples of what device names may not be supported. To change the name of a device, simply open the ClareHome App, tap and hold on any device until the edit button appears, and then tap on the edit button to rename the device.



You must rediscover devices in the Amazon Alexa App for the new device name to be recognized.



Examples of Unsupported Device Names	Examples of Suggested Device Names
Goodnight	Good Night
Light L1BR	Bedroom
2 Devices named Front Door	Front Door Lock, Front Door Light
MBR Light	Master Bedroom Light
F.D. Dimmer	Front Door Dimmer
Welcomehome	Welcome Home

Follow us on Social Media

