



Network Camera Installation Guide

1.3 MP Budget Mini-Dome Camera

Model CV-B13D10-ODI



Last modified: 09/28/16

Doc ID - 336 • REV 06

Copyright

© 28SEP16 Clare Controls. All rights reserved.

This document may not be copied in whole or in part or otherwise reproduced without prior written consent from Clare Controls, LLC., except where specifically permitted under US and international copyright law.

Trademarks and patents

The 1.3 MP Budget Mini Dome Camera name is a trademark of Clare Controls, LLC.

Other trade names used in this document may be trademarks or registered trademarks of the manufacturers or vendors of the respective products.

Manufacturer

Clare Controls, LLC.

7519 Pennsylvania Ave., Suite 104, Sarasota, FL 34243,
USA

Contents

Description...	1
Package contents...	1
Safety instruction...	1
Overview...	4
Installation...	5
Before you start...	5
Setting the network camera over LAN...	9
Accessing via web browser...	14
System requirement...	14
Specifications...	17
Regulatory information...	19
Warranty information...	21
Contact information...	21

Description

The 1.3 MP Budget Mini Dome Camera is an affordable PoE 1.3 MP IP camera for outdoor use. The fixed-lens camera produces high resolution 1.3 MP output at 1280 × 960 in low illumination with an IR LED range to 30 m. Features include digital wide dynamic range, zone-configurable backlight compensation, and a vandal-resistant housing.

Package contents

1X 12 VDC power supply

3X anchor screws

3X plastic anchors

1X hex tool (90 degree wrench)

1X drill template

1X Ethernet weather housing

Safety instruction

Follow these instructions to ensure that the product is used correctly and to avoid danger or property loss. Serious injury or death may occur if any of the warnings are ignored. Injury or equipment damage may occur if any of the cautions are neglected.

WARNINGS

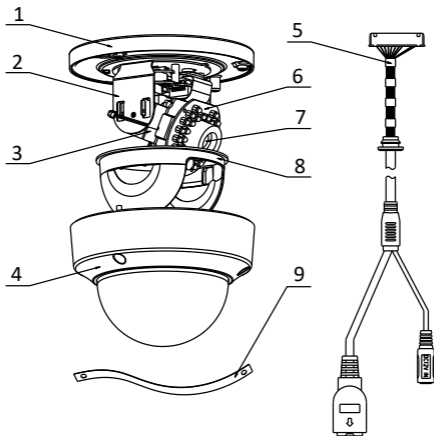
- In the use of the product, you must be in strict compliance with the electrical safety regulations of the nation and region.
- Refer to the technical specifications for detailed information.
- Input voltage should meet both the SELV (Safety Extra Low Voltage) and the Limited Power Source with 24 VAC or 12 VDC according to the IEC60950-1 standard. Refer to the technical specifications for detailed information.
- Do not connect several devices to one power adapter, as adapter overload may cause over-heating or a fire hazard.
- Make sure that the plug is firmly connected to the power socket.
- When the product is mounted on the wall or ceiling, the device should be firmly fixed.
- If smoke, odor, or noise come from the device, turn off the power at once and unplug the power cable. Contact the service center.
- If the product does not work properly, contact your dealer or the nearest service center. Never attempt to disassemble the camera yourself. (We do not assume any responsibility for problems caused by unauthorized repair or maintenance.)

CAUTIONS

- Make sure the power supply voltage is correct before using the camera.
- Do not drop the camera or subject it to physical shock.
- Do not touch the CMOS modules with your fingers. If cleaning is necessary, use a clean cloth with a bit of ethanol and wipe it gently.
- If the camera will not be used for an extended period, replace the lens cap to protect the CMOS from dirt.
- Do not aim the camera at the sun or exceedingly bright places. Blooming or smearing may occur (this is not a malfunction), and affect the endurance of the CMOS at the same time.
- The CMOS may be burned out by laser beams. When using laser equipment make sure that the surface of the CMOS is not exposed to the laser.
- Do not expose the camera to high electromagnetic radiation, extremely hot or cold environments (the operating temperature should be -30 to +60°C), or dusty/damp locations.
- To avoid heat accumulation, ventilation is required for the operating environment.
- Keep the camera away from liquid while in use.
- When returning a camera, pack it in its original packing, or similar packing materials.
- Improper use or replacement of the battery may result in explosion. Replace it with the same or equivalent type only. Dispose of used batteries according to the instructions provided by the battery manufacturer.

Overview

Figure 1: Camera overview



- | | |
|----------------------|-----------------|
| (1) Mounting base | (6) IR LED |
| (2) Horizontal stand | (7) Lens |
| (3) Vertical stand | (8) Black liner |
| (4) Bubble | (9) Safety rope |
| (5) Cables | |

Installation

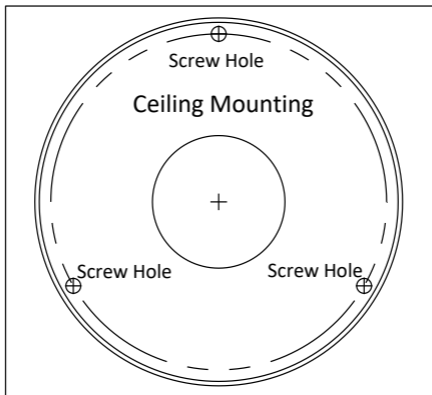
To ensure the camera operates properly, install the camera according to the instructions below.

Before you start

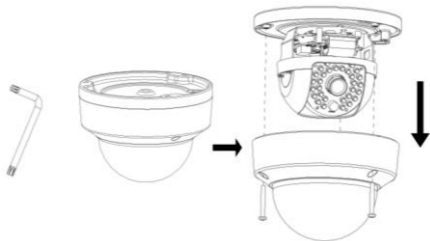
- Make sure that the device in the package is in good condition and all the assembly parts are included.
- Make sure that all related equipment is powered off during installation.
- To determine the proper environmental operating conditions, refer to Specifications on page 17.
- Make sure the power supply matches the required voltage to avoid damage.
- If the product does not function properly, contact your dealer or the nearest service center. Do not disassemble the camera for repair or maintenance by yourself.
- Make sure that the wall is strong enough to withstand three times the weight of the camera.

To mount the camera to the ceiling:

1. Drill the cable hole and the screw holes in the ceiling according to the supplied drilling template.

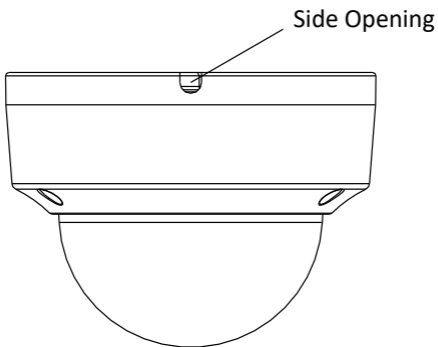


2. Loosen the set screws with a hex tool (supplied) to remove the bubble.

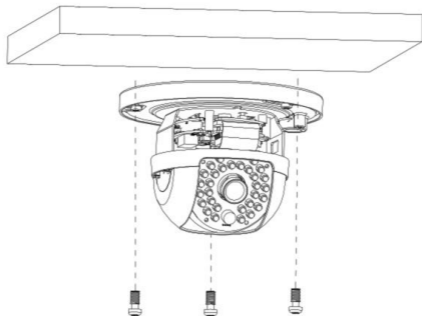


3. Connect the corresponding cables.

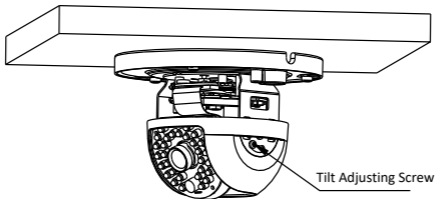
Note: If required, you can route cables through the opening on the side of the mounting base.



4. Fix the mounting base to the ceiling with screws.

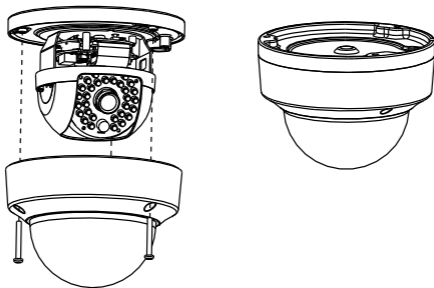


5. Adjust the surveillance angle.
- Loosen the tilt adjusting screws, and adjust the tilt angle [0 to 65°], and tighten the tilt adjusting screws.
 - Hold the black liner and rotate it to adjust the pan position [0 to 360°].
 - Remove the black liner and rotate the camera to adjust the azimuth angle [0 to 360°].



Note: The lens has been factory adjusted to provide the best imaging effect. You must adjust the pan and tilt position to achieve the desired surveillance angle.

6. Reattach the bubble and tighten the screws.

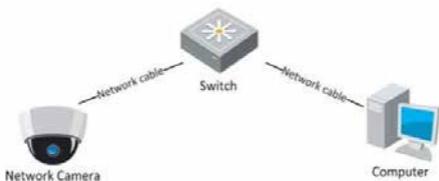


Setting the network camera over LAN

To view and configure the camera via LAN (Local Area Network), you will need to connect the network camera in the same subnet as your PC. Then install the SADP software to search for and change the IP address of the network camera.

The following figure shows the cable connection of a network camera and a PC.

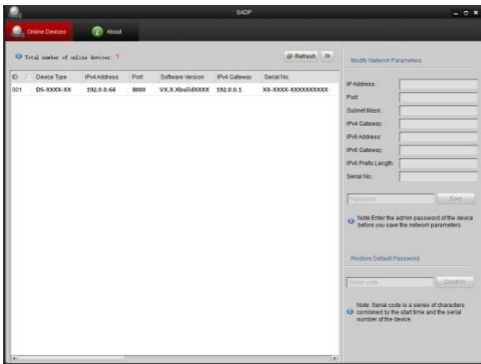
Figure 2: Wiring over LAN







To set the IP address of the camera to access via LAN:

1. To get the IP address, use the SADP software. It automatically detects the network camera in the LAN. It also displays the device's information such as IP address, subnet mask, port number, device serial number, and device version. See the figure below.
2. Change the IP address and subnet mask to match subnet of your PC.

After launching the SADP software, it automatically searches your computers subnet for online devices every 15 seconds from. It displays the total number and information of the found devices in the Online Devices interface. The interface displays the device type, IP address, port number, and gateway.



Notes

- The camera takes 15 seconds to show up online, and 45 seconds to show offline when it is removed.
- Click **Refresh Every 15s** to refresh the online device list manually.
- Click  or  on each column heading to change the order of the displayed information.
- Click  to show the device table and hide the network parameter panel, or click  to show the network parameter panel.

To modify device information:

1. Select the device from the device list, as shown below.

ID	Device Type	IPv4 Address	Port	Software Version	IPv4 Gateway	Serial No.
001	D5-XXXX-XX	192.0.0.64	8000	VX.X.XbuildXXXX	192.0.0.1	XX-XXXX-XXXXXXXXXXXX

- The network parameters of the device are displayed in the Modify Network Parameters panel, as shown below.

Modify Network Parameters

IP Address:

Port:

Subnet Mask:

IPv4 Gateway:

IPv6 Address:

IPv6 Gateway:

IPv6 Prefix Length:

Serial No.:

Note: Enter the admin password of the device before you save the network parameters.

- Edit the network parameters as necessary.
- Enter the password of the device's admin account in the **Password** field, and then click **Save**.
- Enter the network camera's IP address in the web browser's address field to view the live video.

Notes

- The default user name is “clareadmin,” and password is “secure7.”
- Set the gateway for the network camera after you log in when accessing the network camera from different subnets.

Accessing via web browser

System requirement

- Operating system: Microsoft Windows XP SP1 and above version / Vista / Win7 / Server 2003 / Server 2008 32 bits
- CPU: Intel Pentium IV 3.0 GHz or higher
- RAM: 1 G or higher
- Display: 1024 × 768 resolution or higher
- Web browser: Apple Safari 5.02 and above and Mozilla Firefox 3.5 and above

To access the camera via the web browser:

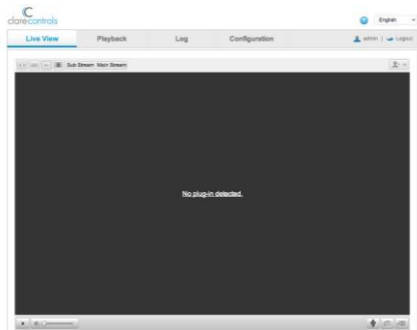
1. Open the web browser.
2. Enter the IP address of the network camera in the browser's address bar.
3. Enter the user name and password, and then click **Login**.



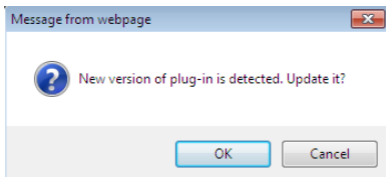
4. Install the plug-in as prompted to view the live video and manage the camera.

Notes

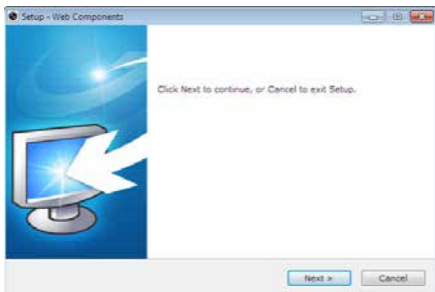
- You may need to close the web browser to finish the installation of the plug-in.
- Mac's require the plug-in to be downloaded manually. See the [Clare Controls ClareVision IP CCTV Dashboard](#) to download the plug-in.



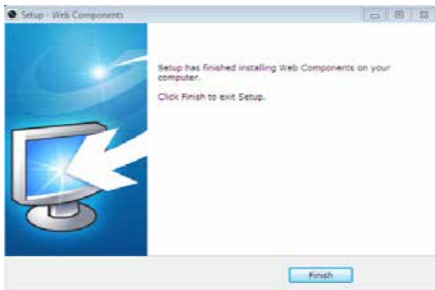
5. Click **OK**.



6. Click **Next**.



7. Click **Finish**.



8. Reopen the web browser after installing the plug-in and repeat steps 2 and 3 to login.

Note: For detailed instructions of further configuration, refer to the *Network Camera User Guide* (Doc ID 343).

Specifications

Camera module	
Image sensor	1/3 in. progressive scan CMOS
Min. illumination	0.01 lux at F1.2, AGC on 0 lux with IR
Shutter time	1/25 s to 1/100,000 s
Lens	4 mm at F2.0, angle of view: 75.8
Lens mount	M12
Angle adjustment	Horizontal: 0° to 355°, vertical: 0° to 65°
Day and night	ICR
Video	
Compression format	H.264 / MJPEG
Number of streams	Dual stream
Frame rate	50 Hz: 25 fps (1280 × 960) 25 fps (1280 × 720) 60 Hz: 30 fps (1280 × 960) 30 fps (1280 × 720)
Bit rate	32 Kbps to 16 Mbps
Digital noise reduction	3D DNR
Wide dynamic range	Digital WDR
Function	
Communication interface	1 RJ45 10 M/100 M Ethernet port
System compatibility	ONVIF, PSIA, CGI

Protocol	TCP/IP, HTTP, DHCP, DNS, DDNS, RTP, RTSP, PPPoE, SMTP, NTP, SNMP, HTTPS, FTP, 802.1x, QoS (SIP, SRTP, IPv6 optional)
Electrical	
Power source	12 V DC \pm 10 %
Power over Ethernet	PoE (802.3 af)
Power consumption	5 W max.
Environmental	
Temperature	-22°F to 140°F (-30°C to 60°C)
Relative humidity	0 to 95% noncondensing
Mechanical	
Housing	IP66
Dimension	Φ 4.37 \times 3.23 in. (Φ 11.1 \times 8.2 cm)
Weight (approx.)	1.1 lbs (500 g)

Regulatory information

DISCLAIMER

Underwriters Laboratories Inc. (UL) has not tested the performance or reliability of the security or signaling aspects of this product. UL has only tested for fire, shock or casualty hazards as outlined in UL's Standard(s) for Safety, UL60950-1. UL Certification does not cover the performance or reliability of the security or signaling aspects of this product. UL MAKES NO REPRESENTATIONS, WARRANTIES OR CERTIFICATIONS WHATSOEVER REGARDING THE PERFORMANCE OR RELIABILITY OF ANY SECURITY OR SIGNALING RELATED FUNCTIONS OF THIS PRODUCT.

FCC This device complies with part 15 of the FCC Rules. Operation is subject to the following two conditions: (1) This device may not cause harmful interference, and (2) this device must accept any interference received, including interference that may cause undesired operation.

CE This product and - if applicable - the supplied accessories too are marked with "CE" and comply therefore with the applicable harmonized European standards listed under the Low Voltage Directive 2006/95/EC, the EMC Directive 2004/108/EC, the RoHS Directive 2011/65/EU



2012/19/EU (WEEE directive): Products marked with this symbol cannot be disposed of as unsorted municipal waste in the European Union. For proper recycling, return this product to your local supplier upon the purchase of equivalent new equipment, or dispose of it at designated collection points. For more information see www.recyclethis.info.



2006/66/EC (battery directive): This product contains a battery that cannot be disposed of as unsorted municipal waste in the European Union. See the product documentation for specific battery information. The battery is marked with this symbol, which may include lettering to indicate cadmium (Cd), lead (Pb), or mercury (Hg). For proper recycling, return the battery to your supplier or to a designated collection point. For more information see www.recyclethis.info.

Warranty information

Clare Controls offers a three (3) year limited warranty on original Clare Controls components, from the date of shipment from Clare Controls. To view complete limited warranty details, including limitations and exclusions, www.clarecontrols.com/warranty.



Contact information

Clare Controls
7519 Pennsylvania Ave, Suite 104
Sarasota, FL 34243
Support: 941.404.1072
Fax: 941.870.9646
<http://support.clarecontrols.com>
www.clarecontrols.com

