

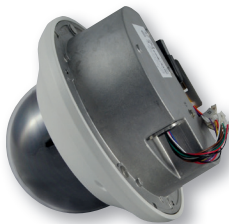
Proline 3MP Dome

Outdoor IP Camera, WDR, Motorized Varifocal Lens (3.5-9 mm), IR Illuminated



The Proline 3MP dome is a high-resolution IP camera with a built-in fan and heater, making it an ideal choice for all-weather outdoor applications where image detail and/or wide coverage is important. Pan, tilt, and rotation are manually adjustable; the motorized varifocal lens supports remote zoom and focus to help ease installation. Capable of 2048 x 1536 resolution, the camera offers a true 120dB wide dynamic range and 30 meter IR LEDs to deliver crisp images regardless of ambient light conditions. The PoE camera includes a micro SD slot for up to 32GB local memory, and is encased in an IP66 vandal-resistant housing.

- Up to 3 megapixel (2048 x 1536) resolution
- Motorized zoom and focus eases installation
- True Wide Dynamic Range
- Sealed chassis
- PoE
- 30 m IR LEDs
- Manual 3-axis (pan/tilt/rotation) positioning
- IP66 ingress protection



Our Proline Series features sealed enclosures for enhanced durability.

Technical Specifications

Camera	
Image Sensor	1/2.5" CMOS
Max. Image Resolution	2048 x 1536
Shutter Time	1/30 to 1/100,000
Min. Illumination	.17 Lux @ F1.6, 0 Lux w/IR
IR Range	98.4' (30 m)
Lens	2.7-9 mm varifocal
Lens Control	Motorized zoom and focus
Angle adjustment	Pan: 0 - 355°, Tilt: 0 - 80°, Rotation: 0 - 355° (Manual)
Day & Night	IR Cut Filter

Video	
Compression Format	H.264/MPEG4/MJPEG
Streams	Dual Stream, Configurable
Max. Frame Rate	60 Hz: 15 fps/3 MP, 30 fps/2 MP 50 Hz: 12.5 fps/3 MP, 25 fps/2 MP
Bit Rate	32 kbps - 16 Mbps
Motion Detection	Yes
Digital noise reduction	3D DNR
Wide dynamic range	True

Function	
Communication Interface	10/100baseT
Compatibility	ONVIF, PSIA, CGI
Protocol	TCP/IP, HTTP, DHCP, DNS, DDNS, RTP, RTSP, PPPoE, SMTP, NTP, SNMP, HTTPS, FTP, 802.1x, Qos
Alarm	I/O: 2/2
Max. SD Memory	32GB

Electrical	
Power Source	24 VAC
Power over Ethernet	High PoE (802.3at)
Max. Power Consumption	24 W with heater on

Environmental	
Operating Temperature	-40 F to 140 F (-40 C - 60 C)
Operating Humidity	90% or less, non-condensing

Mechanical	
Housing	IP66
Color	Ivory
Dimensions	ø 6.29 x 5.75" (ø 159.8 x 146 mm)
Weight (Approx)	4.62 lb (2100 g)

CV-P3D10-ODHIWM Accessory Options

Part Number	
CV-PMNT-W-01	Proline, Wall Mount
CV-PMNT-P-01	Proline, Pendant Mount
CV-MNT-C-01	Corner Mount, Proline and Mainline
CV-MNT-L-01	Pole Mount, Proline and Mainline