



Using HEOS Link with CobraNet Product Bulletin

Content

Introduction	1
Using HEOS Link with CobraNet and the CLIQ.host	1
Using HEOS Link with CobraNet and the CLIQ.mini.....	4
Configuring HEOS with flexports in Fusion.....	8
Contact information	16

Last modified: 07/13/16

Introduction

When using the Denon HEOS Link with CobraNet, use the CS-iMR WOB and CS-MR-8's configurable in/out ports (flexports).

Using HEOS Link with CobraNet and the CLIQ.host

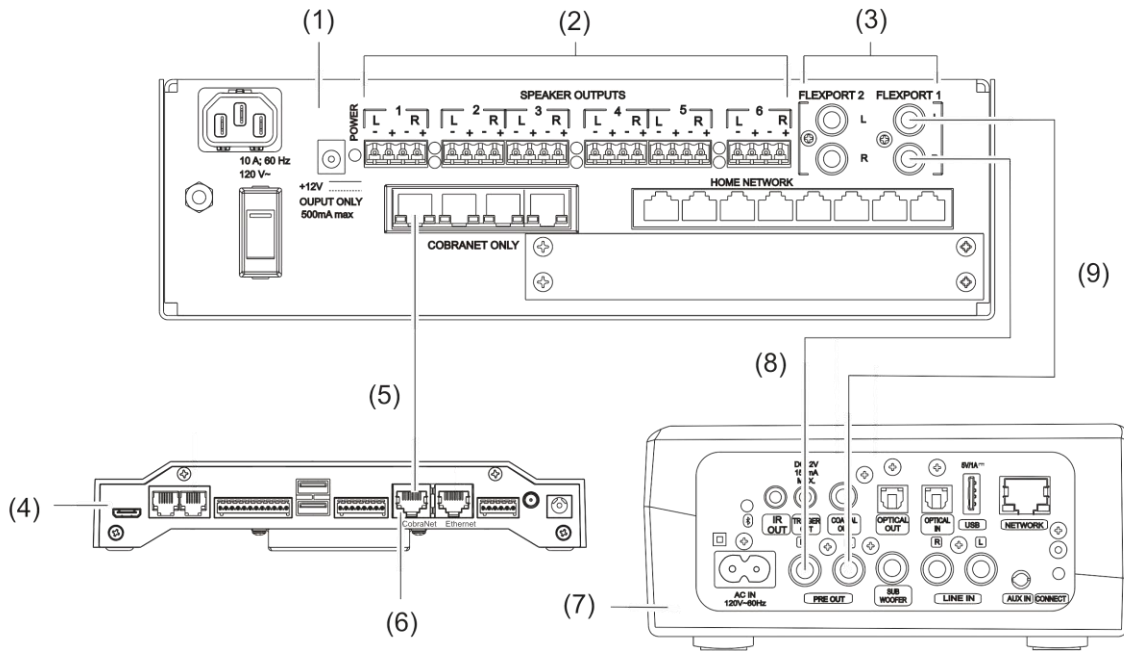
Attach the HEOS Link to the CLIQ.host, before configuring the flexports in Fusion.

To use the HEOS Link with a CS-iMR on the CLIQ.host:

1. Connect an Ethernet cable to the CLIQ.host CobraNet port, and then connect the opposite end of the cable to the CobraNet port on the CS-iMR. See Figure 1, item 5.
2. Connect the right channel cable to the desired right channel flexport (1 or 2) on the CS-iMR, and the opposite end of the cable to the right channel out port on the HEOS Link. See Figure 1, item 8.

3. Connect the left channel cable to the to the left channel flexport on the CS-iMR, and the opposite end of the cable to the left channel port out on the HEOS Link. See Figure 1, item 9.

Figure 1: CLIQ.host with the HEOS Link and CS-iMR



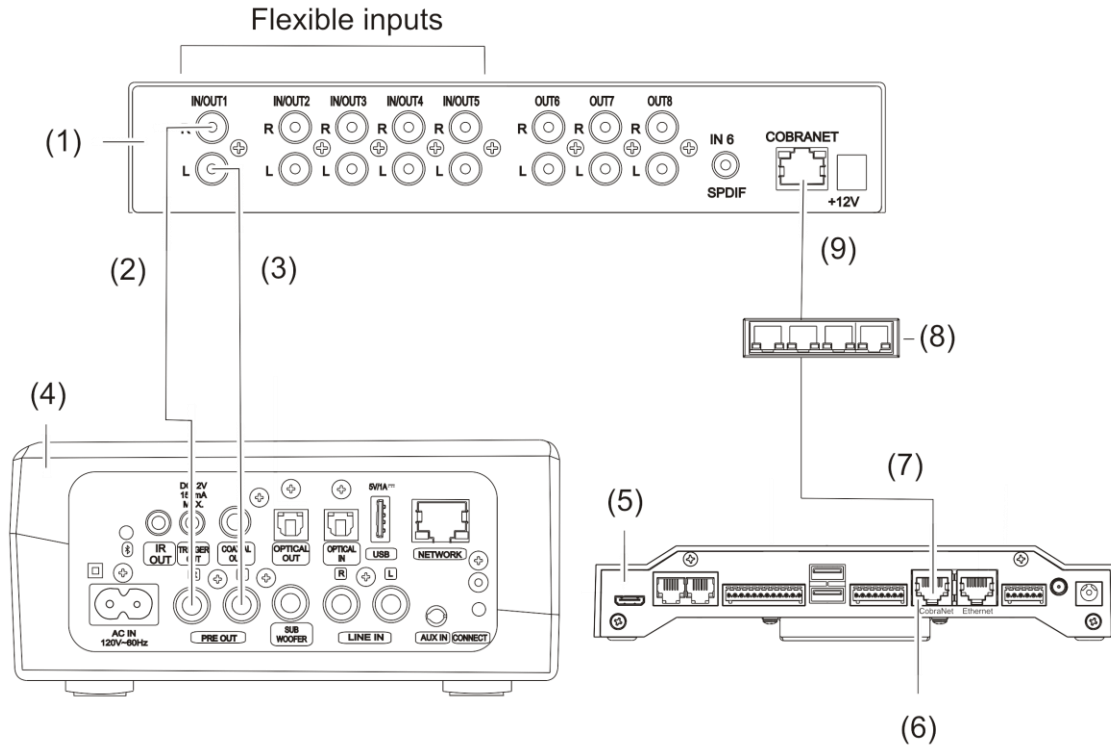
- | | |
|---------------------|-------------------------------|
| (1) CM-iMR | (6) CobraNet port |
| (2) Speaker outputs | (7) HEOS Link |
| (3) Audio flexports | (8) Right audio channel cable |
| (4) CLIQ.host | (9) Left audio channel cable |
| (5) Ethernet cable | |

To use the HEOS Link with an MR-8 on the CLIQ.host using L and R audio channels:

1. Connect an Ethernet cable to the CLIQ.host CobraNet port, and then connect the opposite end of the cable to the data switch. See Figure 2, item 7.
2. Connect another Ethernet cable to the data switch, and then connect the opposite end of cable to CobraNet port on the CS-MR-8. See Figure 2, item 9.
3. Connect the left channel cable to the desired left channel flexport on the CS-MR-8, and the opposite end of the cable to the left channel out port on the HEOS Link. See Figure 2, item 3.

4. Connect the right channel cable to the to the right channel flexport on the CS-MR-8, and the opposite end of the cable to the right channel port out on the HEOS Link. See Figure 2, item 2.

Figure 2: CLIQ.host with the HEOS Link and CS-MR-8 using L and R audio channels

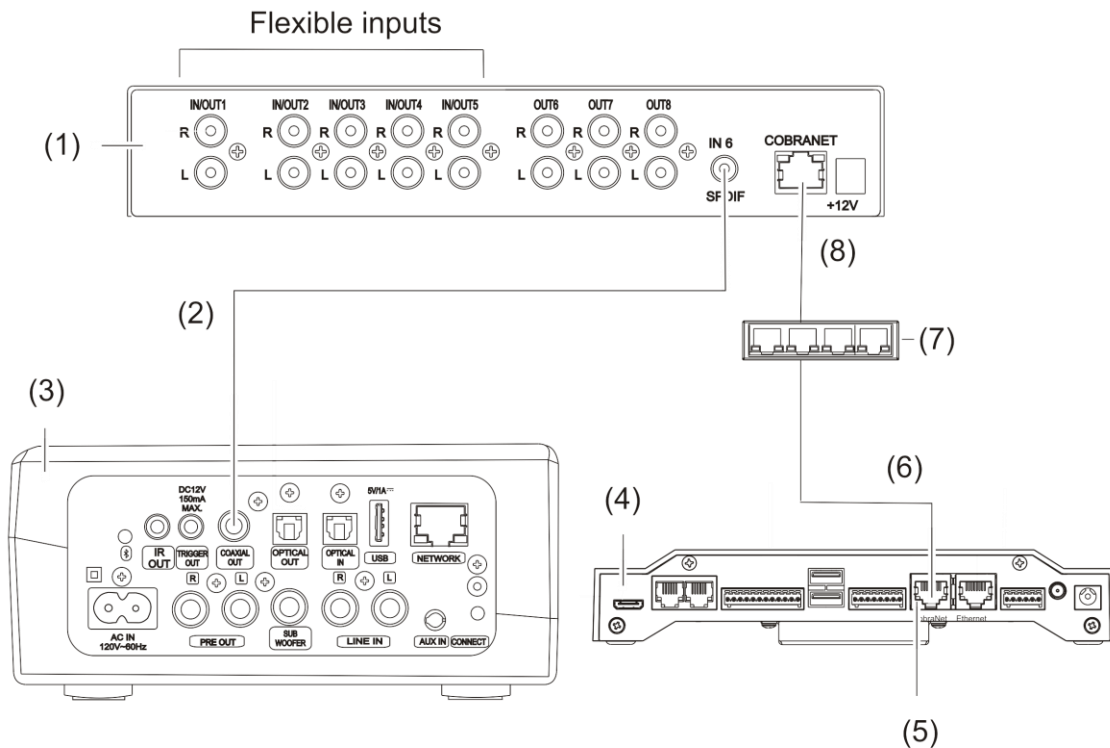


- | | |
|-------------------------|--------------------------|
| (1) CS-MR-8 | (6) CobraNet port |
| (2) Right channel cable | (7) Ethernet cable |
| (3) Left channel cable | (8) CobraNet data switch |
| (4) HEOS Link | (9) Ethernet cable |
| (5) CLIQ.host | |

To use the HEOS Link with an MR-8 on the CLIQ.host using SPDIF:

1. Connect an Ethernet cable to the CLIQ.host CobraNet port, and then connect the opposite end of the cable to data switch. See Figure 2, item 6.
2. Connect another Ethernet cable to the data switch, and then connect the opposite end of CobraNet port on the CS-MR-8. See Figure 3, item 8.
3. Connect a Digital Coaxial Audio cable to the SPDIF port on the CS-MR-8, and then attach the opposite end to the COAX port on the HEOS Link. See Figure 3, item 2 (on page 4).

Figure 3: CLIQ.host with the HEOS Link and CS-MR-8 using SPDIF



- | | |
|---------------------------------|------------------------|
| (1) CS-MR-8 | (5) CobraNet port |
| (2) Digital Coaxial Audio cable | (6) Ethernet cable |
| (3) HEOS Link | (7) CobraNet data Link |
| (4) CLIQ.host | (8) Ethernet cable |

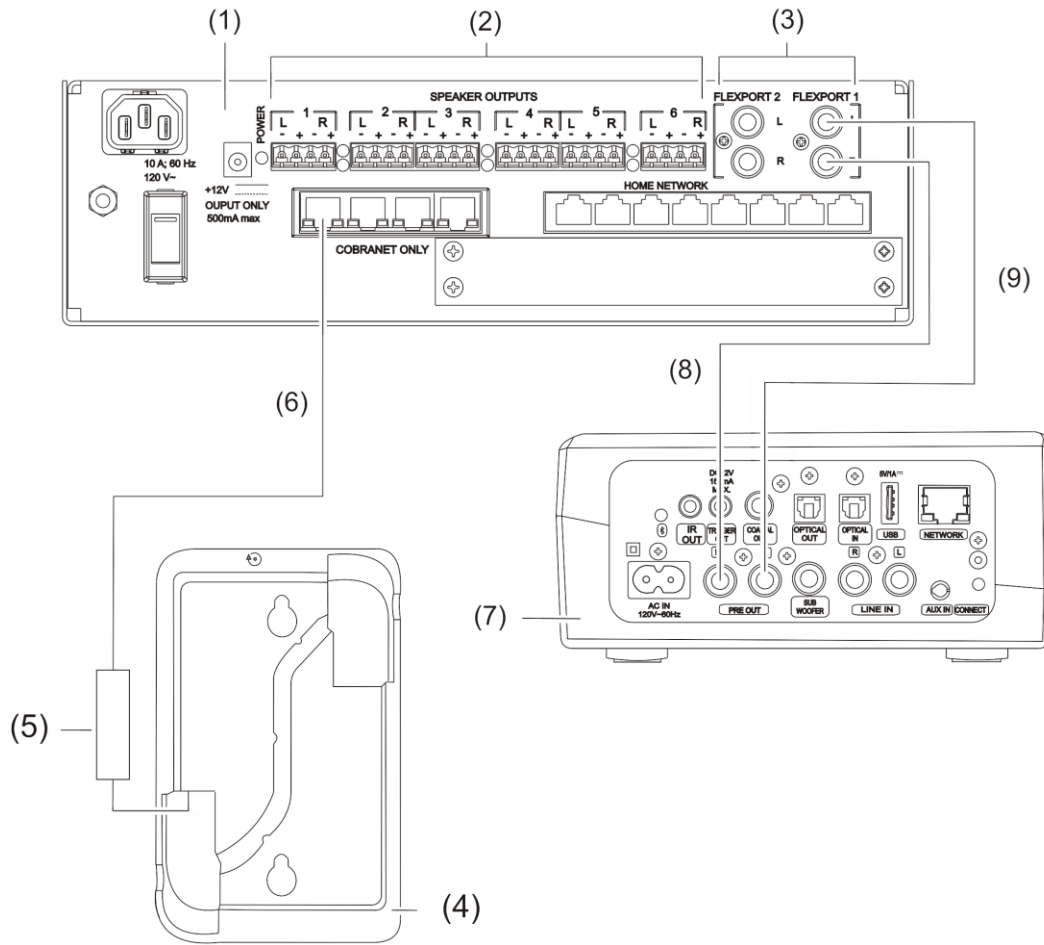
Using HEOS Link with CobraNet and the CLIQ.mini

Attach the HEOS Link to the CLIQ.mini before configuring the flexports in Fusion.

To use the HEOS Link with a CS-iMR on the CLIQ.mini:

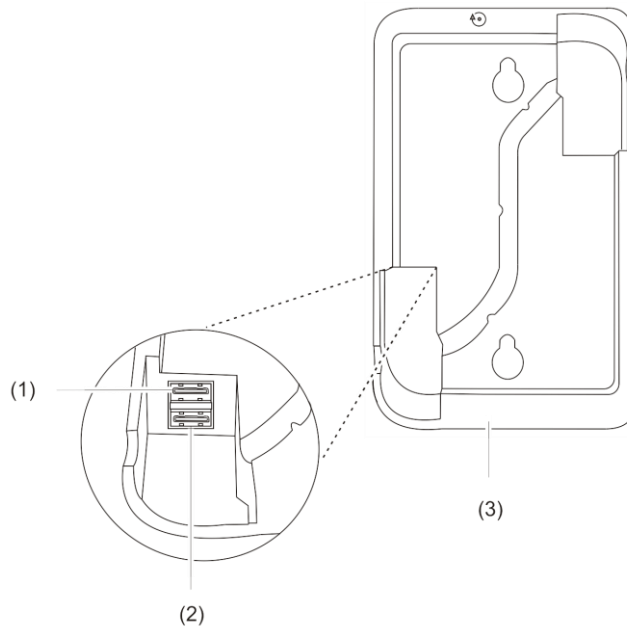
1. Connect an Ethernet adapter cable (Clare p/n TU-2ET100) to USB port 2 on the CLIQ.mini. See Figure 4, item 5 and Figure 5, item 2.
2. Connect an Ethernet cable to the CobraNet port on the CS-iMR, and then connect the opposite end to the Ethernet adapter cable on the CLIQ.mini. See Figure 4, item 6.
3. Connect the right channel cable to the desired right channel flexport (1 or 2) on the CS-iMR, and the opposite end of the cable to the right channel port out on the HEOS Link. See Figure 4, item 8.
4. Connect the left channel cable to the to the left channel flexport on the CS-iMR, and the opposite end of the cable to the left channel port out on the HEOS Link. See Figure 4, item 9.

Figure 4: CLIQ.mini with the HEOS Link and CS-iMR



- | | |
|---|-------------------------------|
| (1) CM-iMR | (6) Ethernet cable |
| (2) Speaker outputs | (7) HEOS Link |
| (3) Audio flexports | (8) Left audio channel cable |
| (4) CLIQ.mini | (9) Right audio channel cable |
| (5) Ethernet adapter cable
(p/n CH-SEC-USB-01) | |

Figure 5: CLIQ.mini Ethernet adapter cable connection

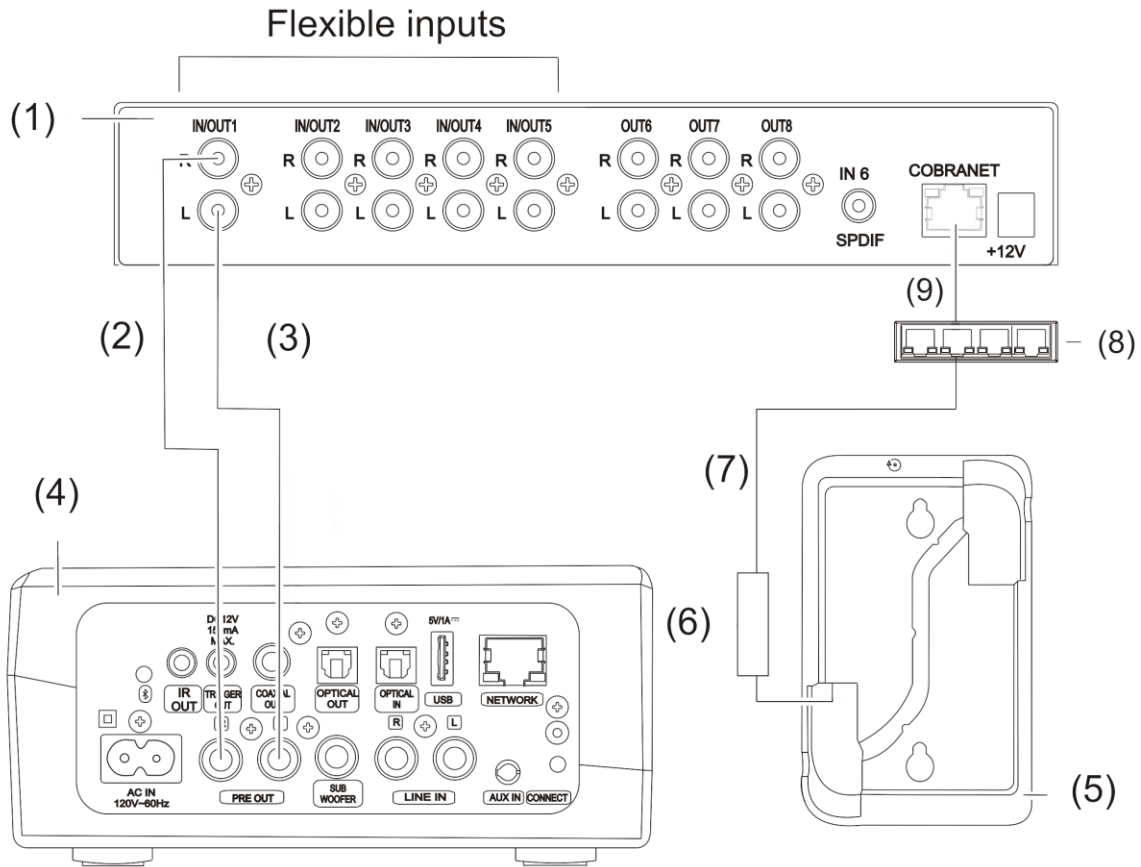


- (1) USB port 1
- (2) USB port 2
- (3) CLIQ.mini

To connect the HEOS Link to the CLIQ.mini using a CS-MR-8 with L and R audio channel cables:

1. Connect an Ethernet adapter cable (Clare p/n CH-SEC-USB-01) to USB port 2 on the CLIQ.mini. See Figure 5, item 2 and Figure 6, item 6.
2. Connect an Ethernet cable to the CobraNet port on the CS-MR-8, and then connect the opposite end to the CobraNet data switch. See Figure 6, item 9.
3. Connect another Ethernet cable to the data switch, and then connect the opposite end to the Ethernet adapter cable on the CLIQ.mini. See Figure 6, items 6, 7, and 8.
4. Connect the left channel cable to the desired left channel flexport (1 or 2) on the CS-MR-8, and the opposite end of the cable to the left channel port out on the HEOS Link. See Figure 6, item 3.
5. Connect the right channel cable to the to the right channel flexport on the CS-MR-8, and the opposite end of the cable to the right channel port out on the HEOS Link. See Figure 6, item 2.

Figure 6: CLIQ.mini with the HEOS Link and CS-MR-8 using L and R audio channels

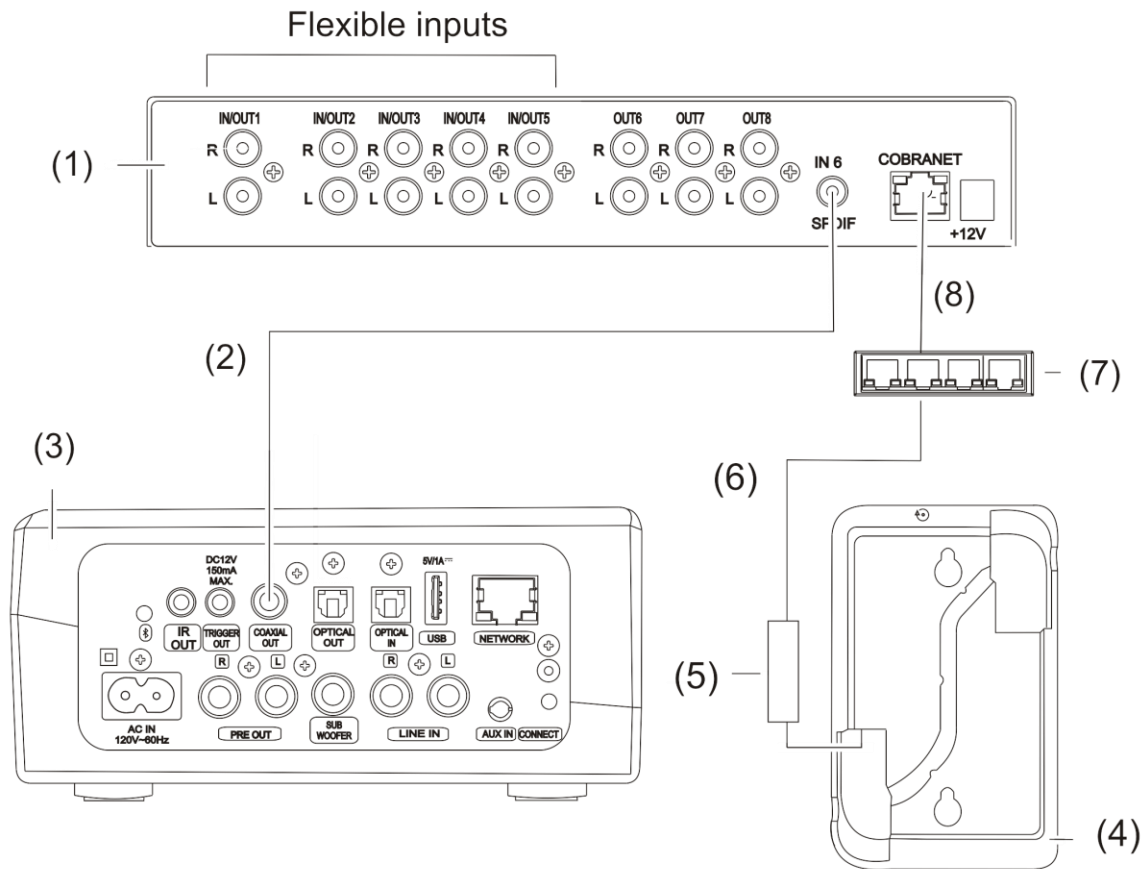


- | | |
|-------------------------------|---|
| (1) CS-MR-8 | (6) Ethernet adapter cable
(p/n CH-SEC-USB-01) |
| (2) Right audio channel cable | (7) Ethernet cable |
| (3) Left audio channel cable | (8) CobraNet data switch |
| (4) HEOS Link | (9) Ethernet cable |
| (5) CLIQ.mini | |

To use the HEOS Link with an MR-8 on the CLIQ.mini using SPDIF:

1. Connect an Ethernet adapter cable to USB port 2 on the CLIQ.mini. See Figure 7, item 5 and Figure 5, item 2 (on page 8).
2. Connect an Ethernet cable to the CobraNet port on the CS-MR-8, and then connect the opposite end to the CobraNet data switch. See Figure 7, item 8.
3. Connect another Ethernet cable to the data switch, and then connect the opposite end to the Ethernet adapter cable on the CLIQ.mini. See Figure 7, item 6.
4. Connect a Digital Coaxial Audio cable to the SPDIF port on the CS-MR-8, and then attach the opposite end to the COAX port on the HEOS Link. See Figure 7, items 5, 6, and 7.

Figure 7: CLIQ.mini with the HEOS Link and CS-MR-8 using SPDIF




- | | |
|---------------------------------|----------------------------|
| (1) CS-MR-8 | (5) Ethernet adapter cable |
| (2) Digital Coaxial Audio cable | (p/n CH-SEC-USB-01) |
| (3) HEOS Link | (6) Ethernet cable |
| (4) CLIQ.mini | (7) CobraNet data switch |
| | (8) Ethernet cable |

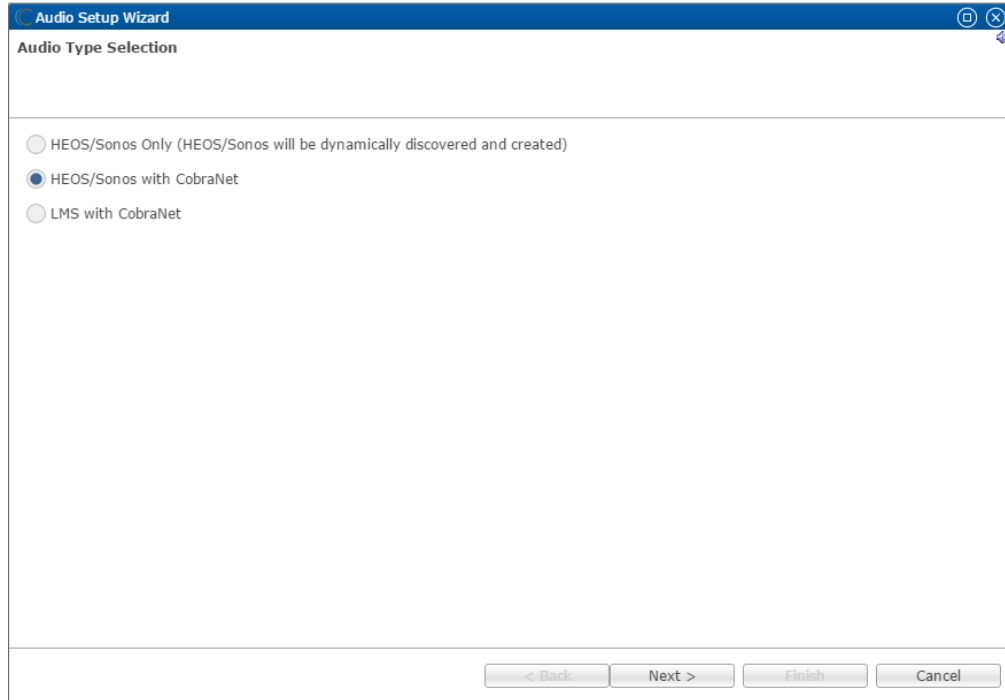
Configuring HEOS with flexports in Fusion

The CS-iMR device has 2 configurable flexports. The CLIQ device must be connected to HEOS before configuring the flexports in Fusion.

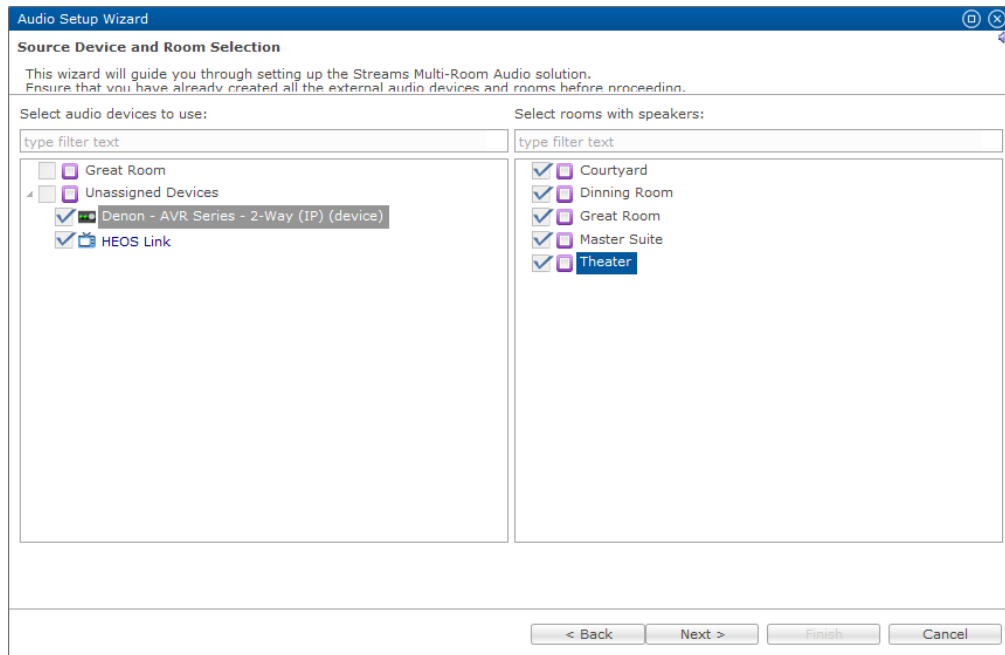
To configure the flexports in Fusion with a CS-iMR:

1. Access your project in Fusion, and then click the **Open Audio Setup Wizard icon** .

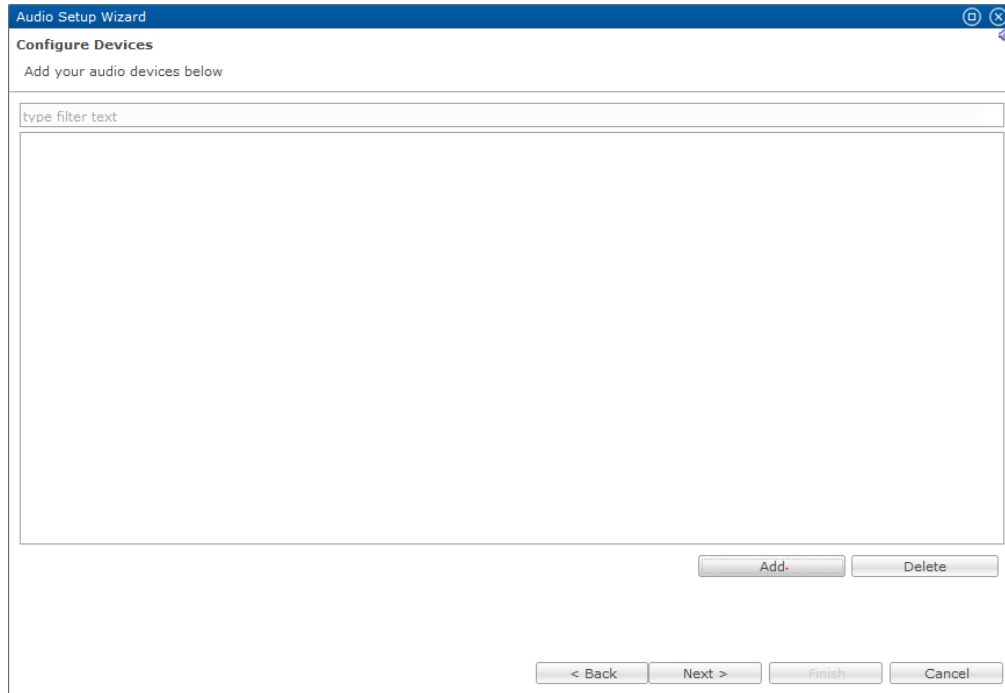
2. Select HEOS/Sonos with CobraNet, and then click **Next**.



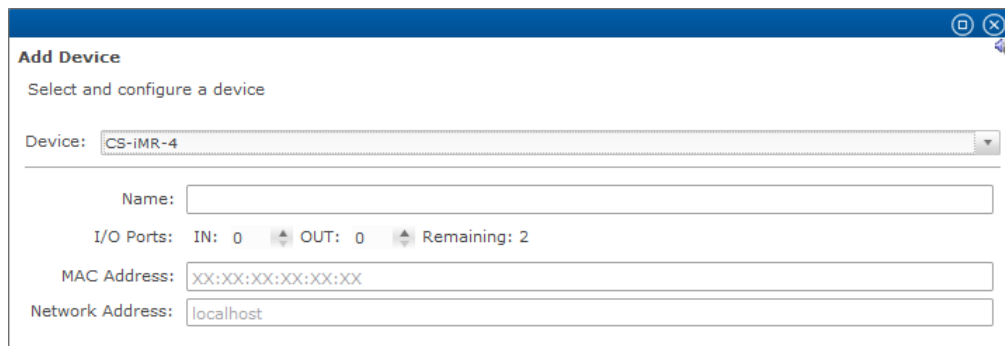
3. In the left column, select your HEOS device and other desired audio input devices, and in the right column, select the output areas.



4. Click **Next**.

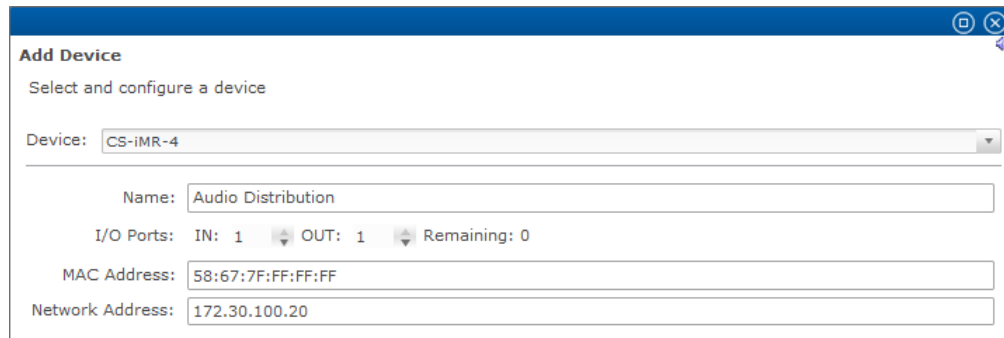


5. Click **Add**, and then select the CS-iMR in the device drop-down.
The device's configurable details display.



6. Enter a name for the device, select the number of IN and OUT ports, and then enter the MAC and Network address of the CS-iMR.

Note: The CS-iMR has 2 configurable flexports, but one port must be set as an input.



Add Device
Select and configure a device

Device: CS-iMR-4

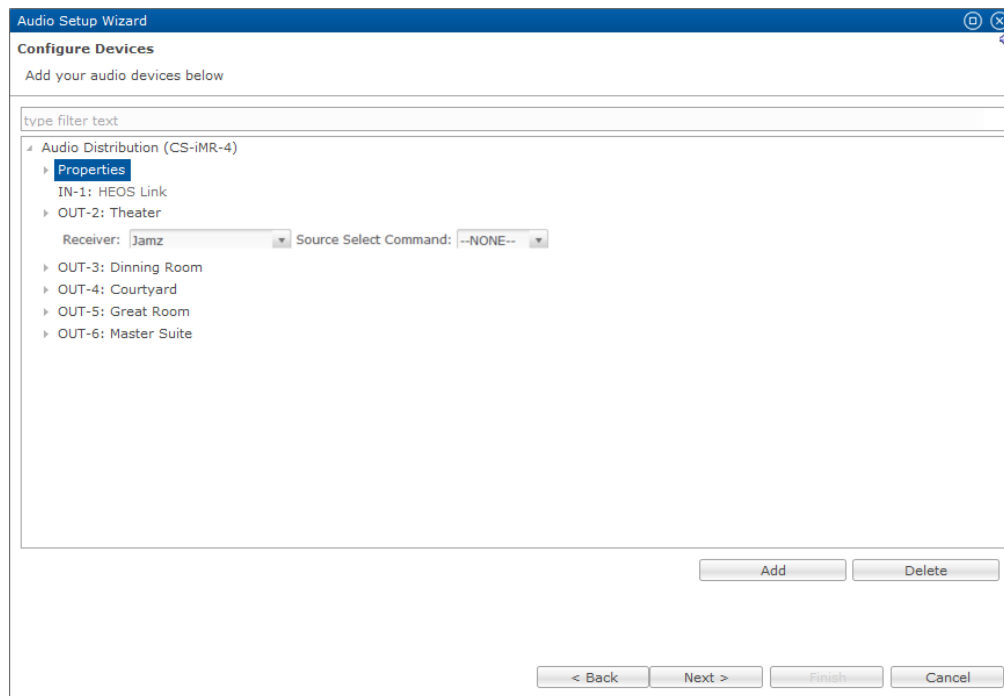
Name: Audio Distribution

I/O Ports: IN: 1 OUT: 1 Remaining: 0

MAC Address: 58:67:7F:FF:FF:FF

Network Address: 172.30.100.20

7. Click **Add Device**, and then expand the device and properties to view the IN and OUT ports available.



Audio Setup Wizard
Configure Devices
Add your audio devices below

type filter text

- Audio Distribution (CS-iMR-4)
 - Properties
 - IN-1: HEOS Link
 - OUT-2: Theater
 - Receiver: Jamz
 - Source Select Command: --NONE--
 - OUT-3: Dining Room
 - OUT-4: Courtyard
 - OUT-5: Great Room
 - OUT-6: Master Suite

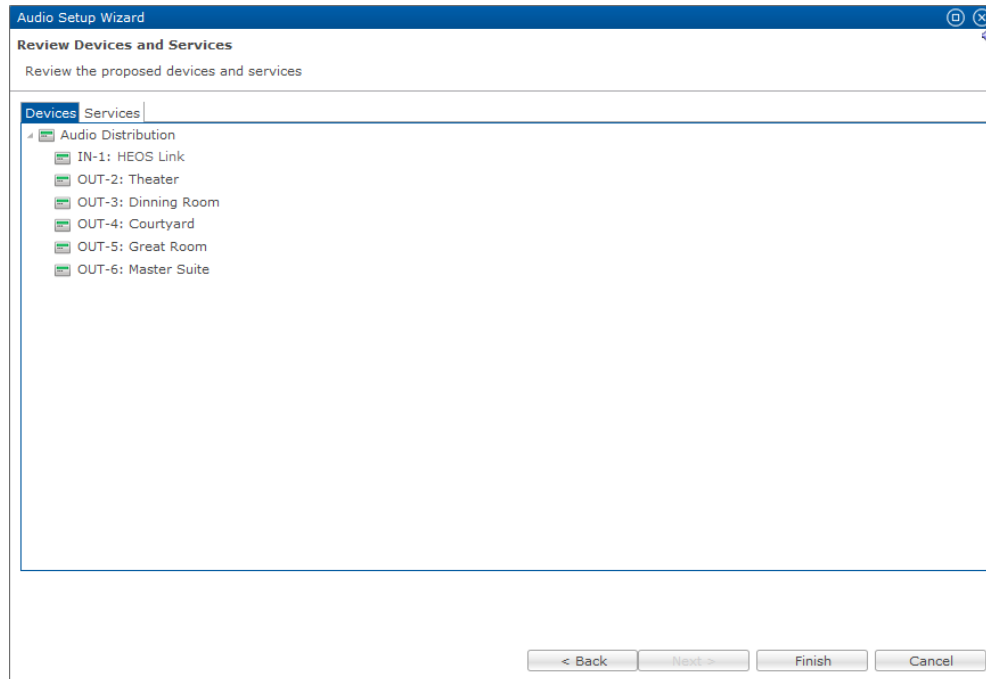
Add Delete

< Back Next > Finish Cancel

8. Select the HEOS Link in the **IN-1** field.
9. Select the desired area for the first **OUT** field, and then expand it and select the desired output device.
Repeat step 9 for each desired output.

10. Click outside of the last box configured, and then click **Next**.


A list of proposed devices and services displays.

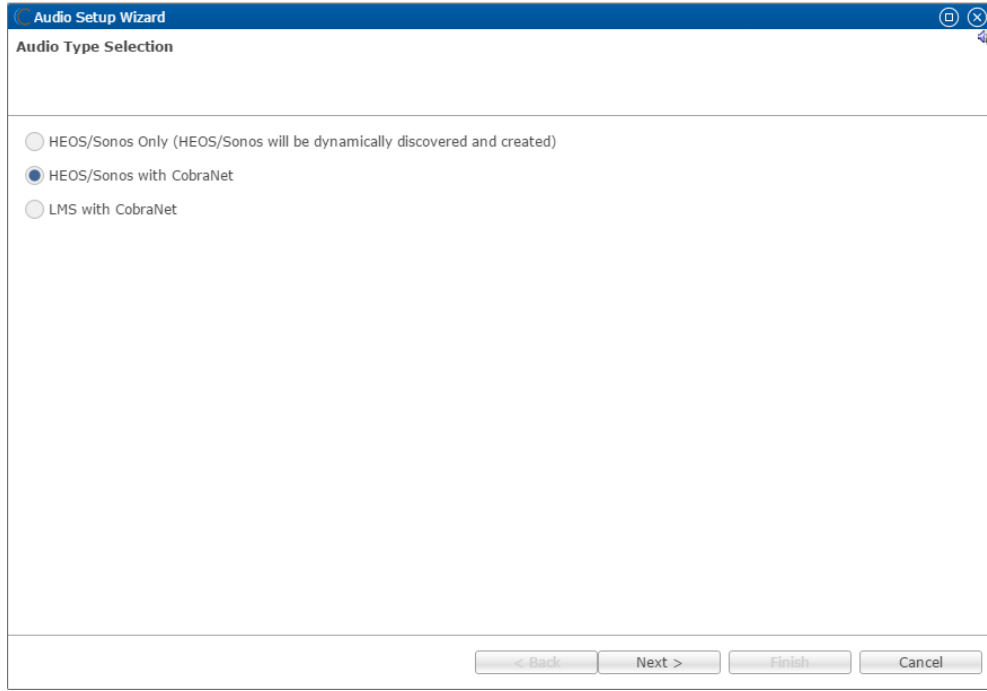


11. Click **Finish**.

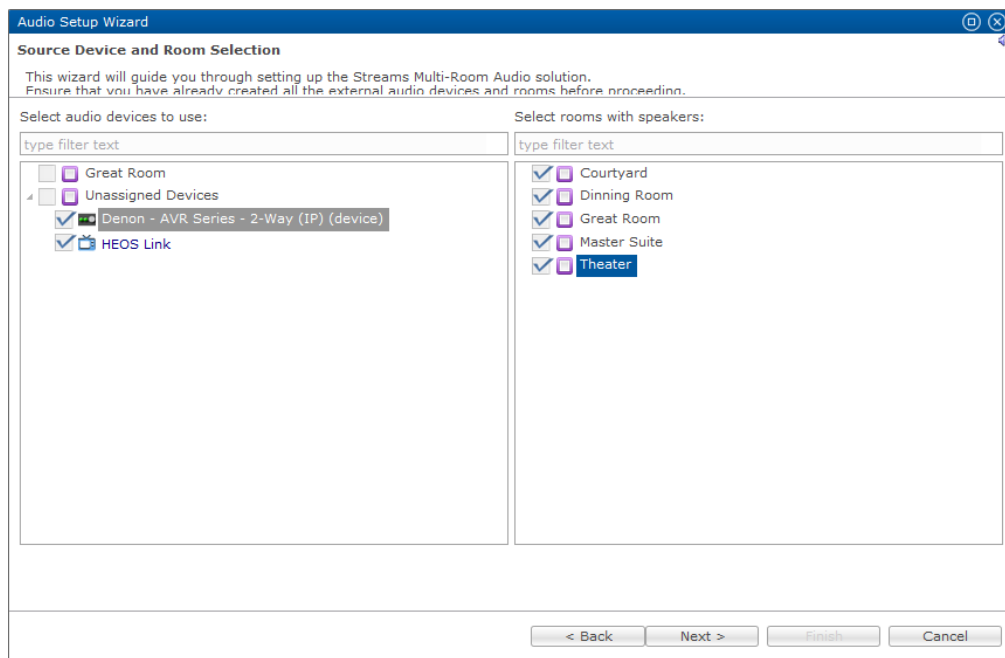
The audio services are created for you.

To configure the flexports in Fusion with a CS-MR-8:

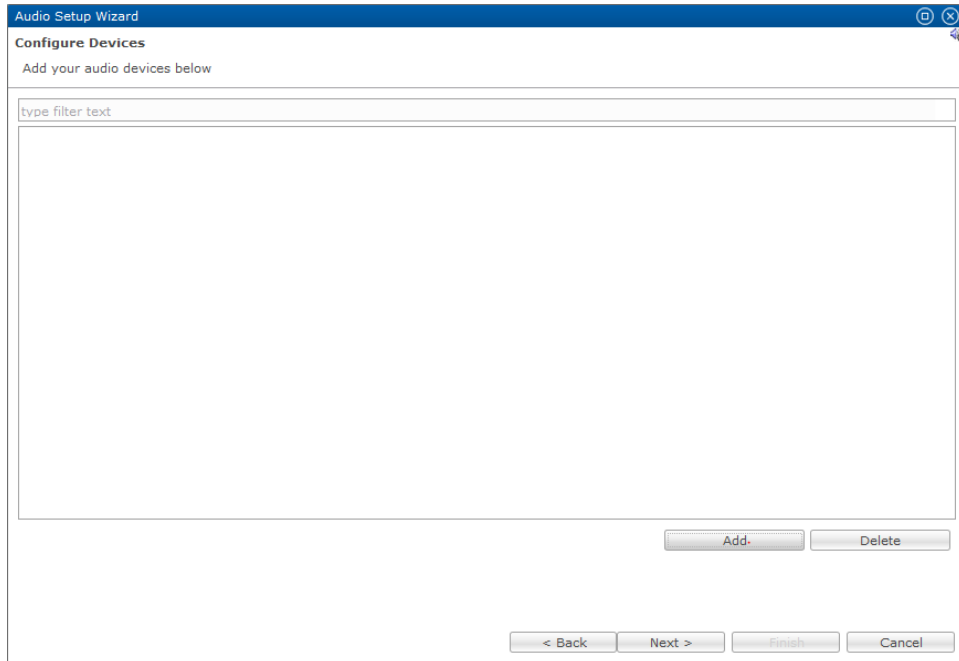
1. Access your project in Fusion, and then click the **Open Audio Setup Wizard icon** .
2. Select HEOS/Sonos with CobraNet, and then click **Next**.



3. In the left column, select your HEOS device and other desired audio input devices, and in the right column, select the output areas.



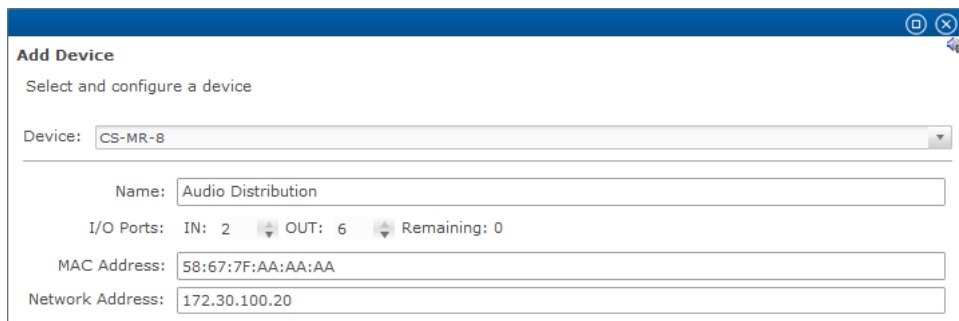
4. Click **Next**.



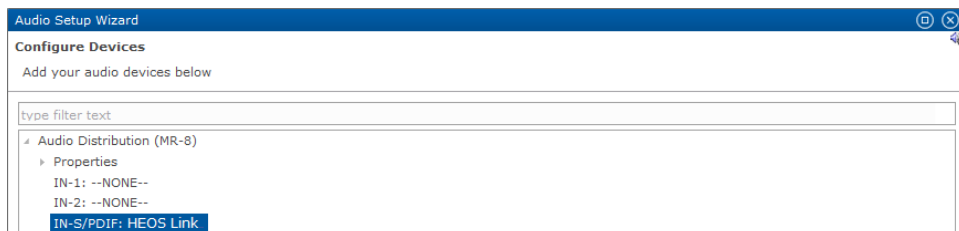
5. Click **Add**, and then select the CS-MR-8 in the device drop-down.
The device's configurable details display.

6. Enter a name for the device, select the number of IN and OUT ports, and then enter the MAC and Network address of the CS-MR-8.

Note: The CS-MR-8 has 5 configurable flexports and must have at least 3 outputs.



7. Click **Add Device**, and then expand the device and properties to view the IN and OUT ports available.



8. Select the HEOS Link in the **IN-1** field.

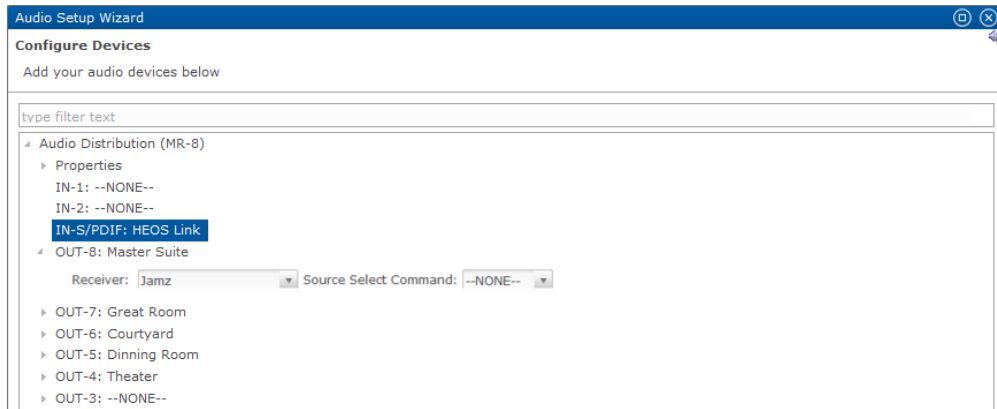
– or –

Select HEOS Link in the **IN-SPDIF** field.

Note: The SPDIF can only be selected if the HEOS Link is connected to the SPDIF on the CS-MR-8.

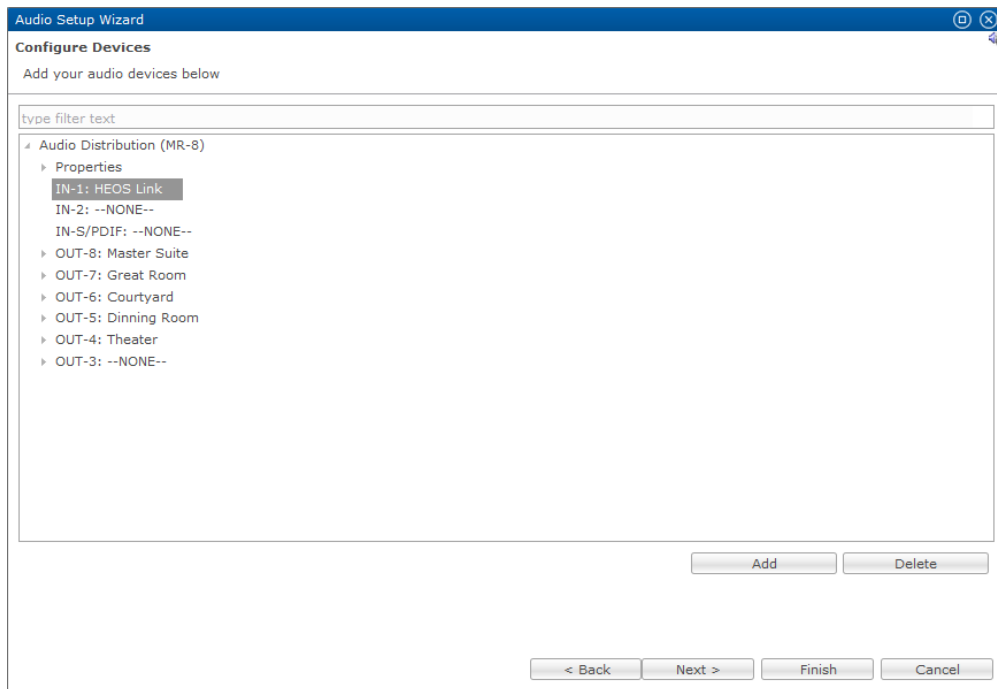
9. Select the desired area for the first **OUT** field, and then expand it and select the desired output device.

Repeat step 9 for each desired device.



10. Click outside of the last box configured, and then click **Next**.

A list of proposed devices and services displays.



11. Click **Finish**.

The audio services are created for you.

Contact information

Clare Controls
7519 Pennsylvania Ave, Suite 104
Sarasota, FL 34243
Support: 941.404.1072
Fax: 941.870.9646
claresupport@clarecontrols.com
www.clarecontrols.com