



TECH BULLETIN

TECHNICAL SUPPORT

© 14NOV14 Clare Controls, Inc.

Configuring and Integrating a Third-Party IP Camera with a Clare Controls NVR

Introduction

This bulletin communicates how to successfully configure a third-party IP camera with a Clare Controls NVR.

For a list of all third-party cameras currently supported by ClareVision NVRs please see *Third-Party IP Cameras Supported by ClareVision NVRs Product Bulletin* (Doc ID 363).

Issue

Third-party IP cameras

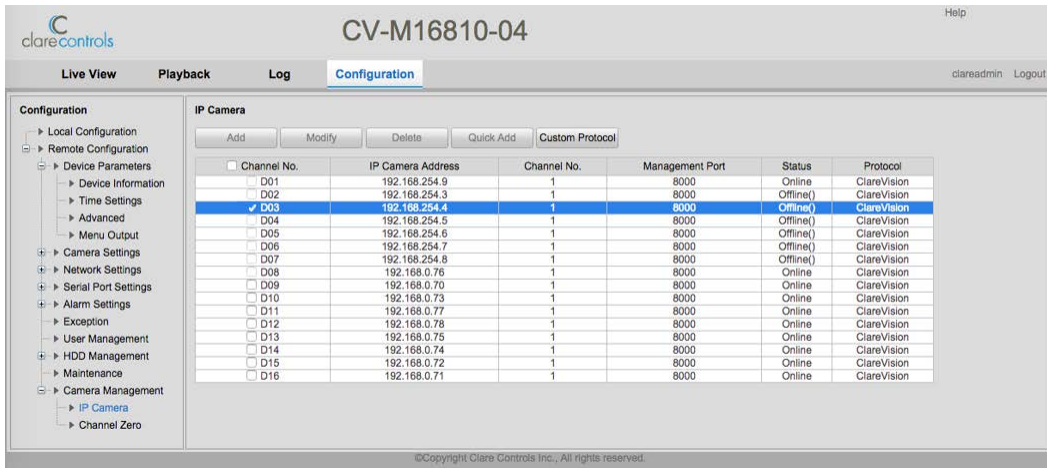
A third-party IP camera can only be added to the ClareHome system when it is connected to a Clare Controls NVR.

Solution

Connect the IP camera to a Clare Controls NVR to communicate with the ClareHome system.

To configure the IP camera for the NVR:

1. Log into the NVR.
2. Browse to the IP Camera menu. **Configuration > Remote Configuration > Camera Management > IP Camera.**



3. Select the checkbox of the camera or channel in the first **Channel No.** column, and then click **Custom Protocol**.

The Custom Protocol dialog displays.

The Custom Protocol dialog box contains the following fields and options:

- Custom Protocol: Custom Protocol1
- Protocol Name: Custom 1
- Stream Type: Sub Stream
- Enable Stream
- Protocol: RTSP
- Transfer Protocol: Auto
- Port: 554
- Stream Path: (empty)

Buttons: OK, Cancel

4. Configure the Custom Protocol dialog for the camera as suggested below.

Custom Protocol: The protocol being used by the camera.

Protocol Name: The name you want to give the protocol you are using.

Stream Type: Sub Stream

Protocol: Select the protocol type.

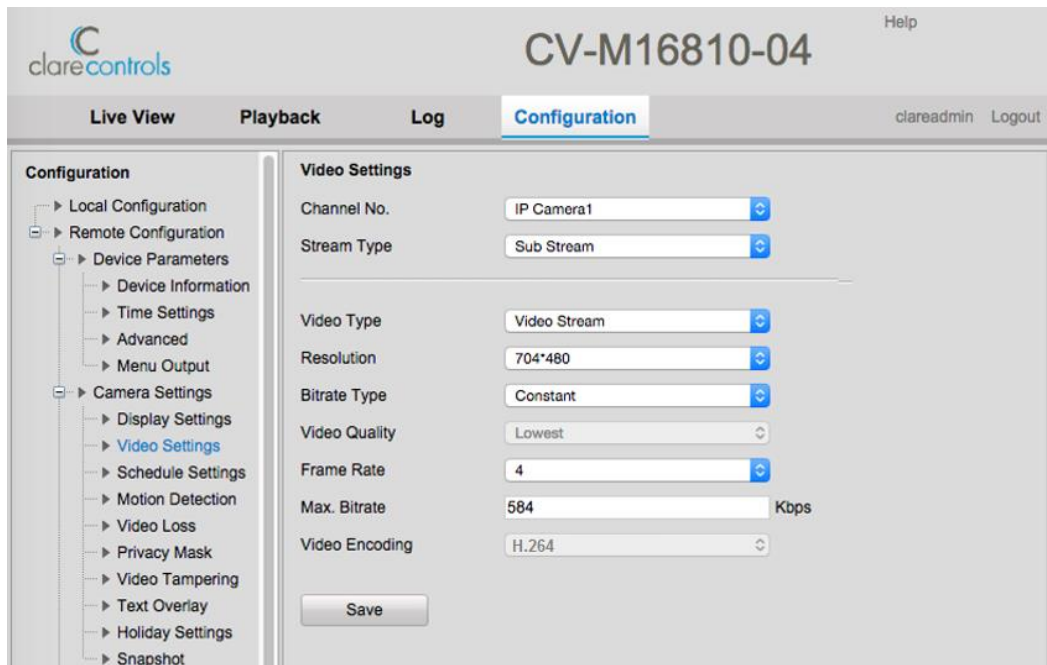
Transfer Protocol: Select the transfer method preferred.

Port: The port number that the camera is using.

Stream Path: The path used to view the cameras video stream. This URL is different for each camera.

Note: Select the **Enable Stream** checkbox.

5. Click **OK**.
6. Navigate to the Video Settings menu. **Configuration > Remote Configuration > Camera Settings > Video Settings**.



7. Configure the Video Settings field as listed below.

Channel No.: The channel selected for the IP camera.

Stream Type: Sub Stream

Video Type: Video Stream

Resolution: 704 x 480

Bitrate Type: Constant

Video Quality: Lowest (You cannot edit this field.)

Frame Rate: 4

Max Bitrate: 584


Video Encoding: H.264

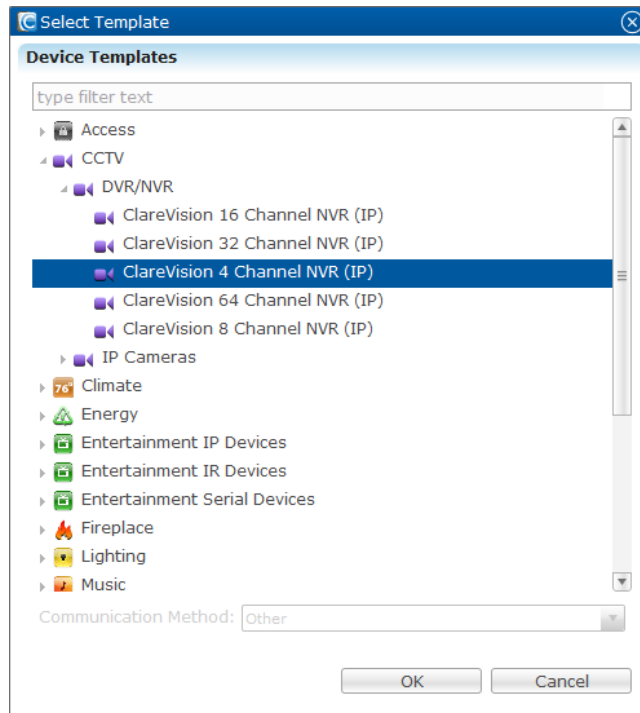
Note: You cannot edit this field. You must log into the IP camera to change this setting.

8. Click **Save**.

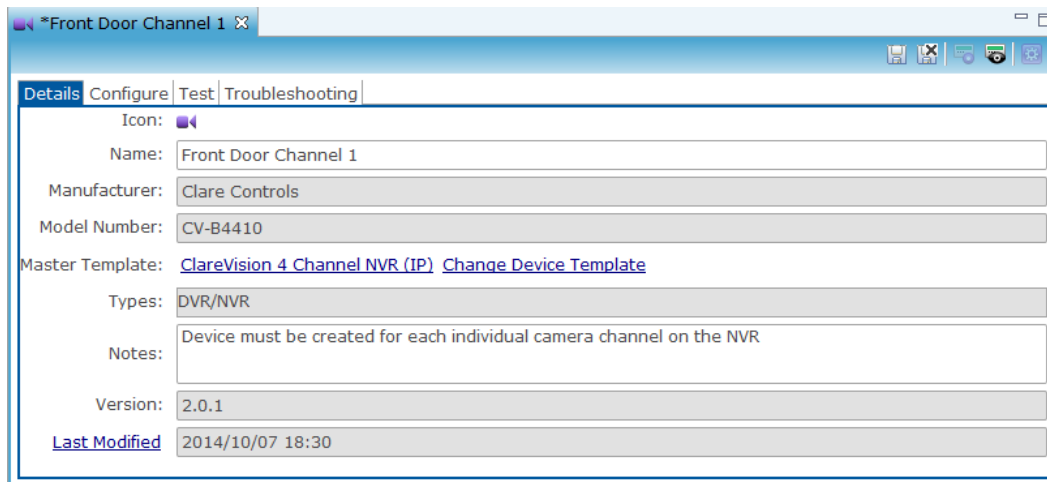
After adding the IP camera to the Clare Controls NVR, configure the NVR in Fusion.

To add the first NVR channel to Fusion:

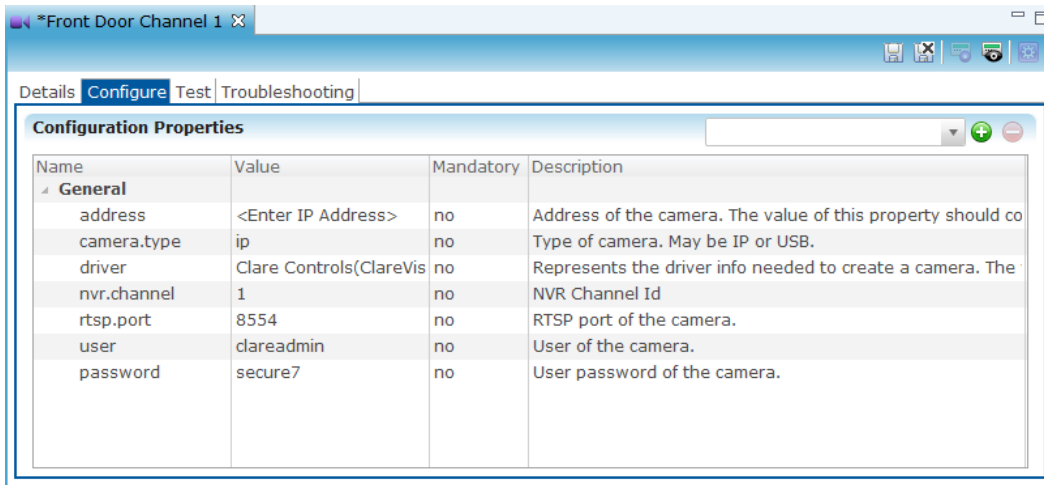
1. Click the **Device** tab, and then click the New Device button .
2. The Select Template dialog displays. Browse to **CCTV > DVR/NVR** and select a model. Click **OK**.




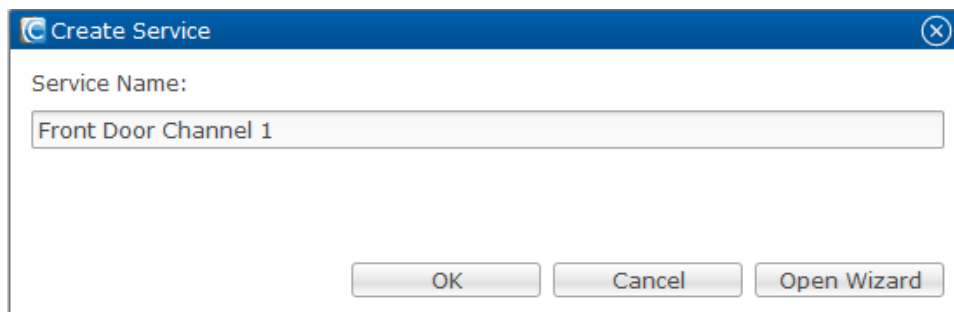
3. In the **Details** tab, enter a name for the camera channel – for example, Front Door Channel 1. You can also enter notes in this tab.



4. Click the **Configure** tab.



5. Enter the values in the following fields:
 - In the **Address** field, enter the device's network IP address.
 - In the **nvr.channel** field, enter the NVR channel you want to add. For example, the 4 Channel NVR has four channels that can be added. Each one of these channels corresponds with a camera connected to the NVR.
6. Click the Save and Close button .
7. When the Create Service dialog displays, click **OK**.

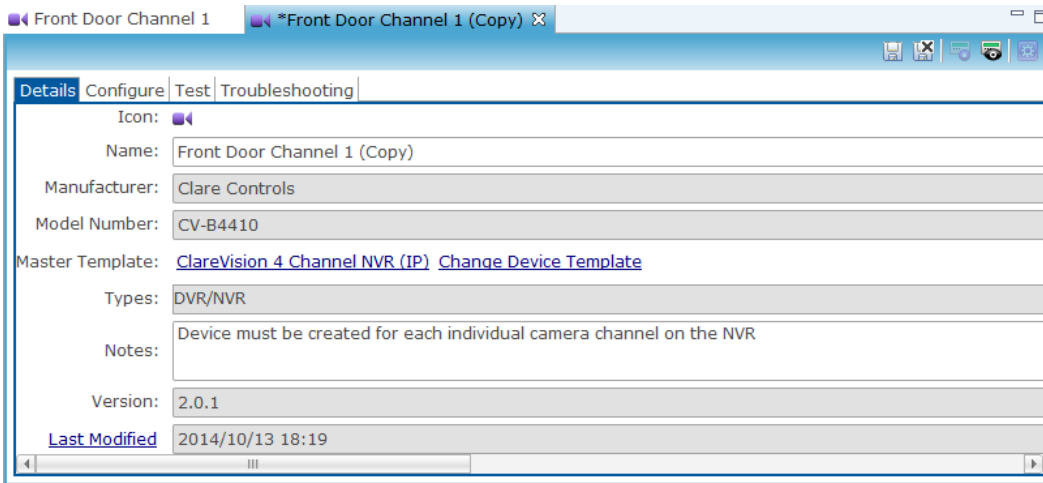


After adding the initial channel, configure the remaining channels for the NVR.

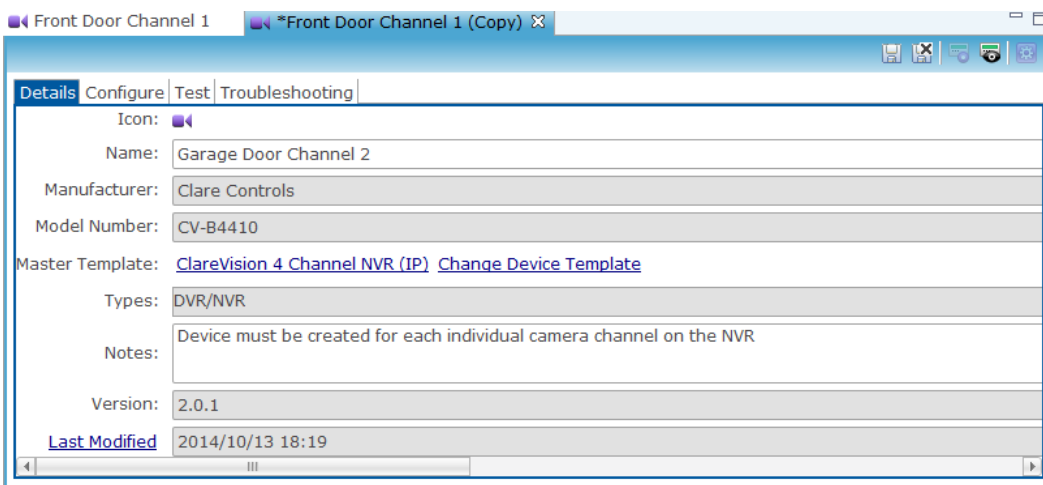
Adding additional channels:

1. Return to the **Devices** tab and highlight the NVR channel that was just created.
2. Right click the device, and then click **Clone Device**.

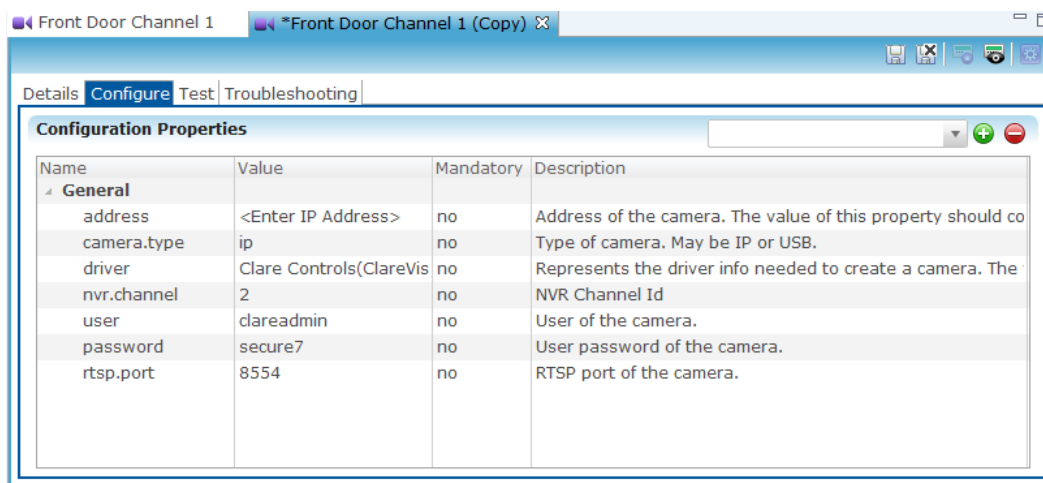
The copy displays in the **Details** tab.



3. In the **Details** tab, name the next channel – for example, Garage Door Channel 2.

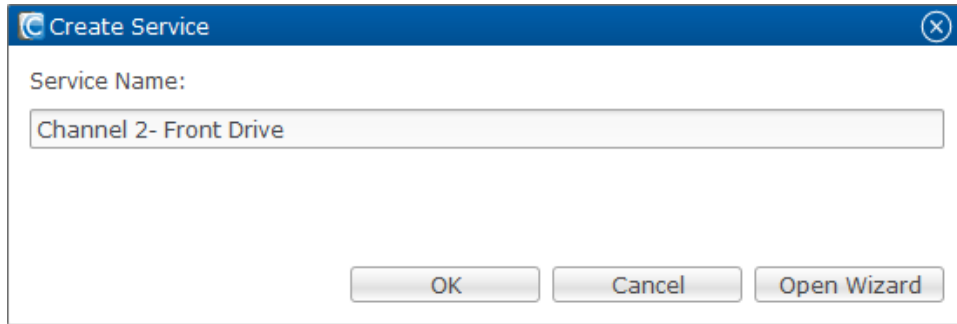


4. Click the **Configure** tab and change the nvr.channel value field to channel 2.



5. Click **Save**.

6. When the Create Service dialog displays click **OK**.



7. Repeat steps 1 through 6 for each additional camera/channel in use.

Contact information

Clare Controls, Inc.
7519 Pennsylvania Ave, Suite 104
Sarasota, FL 34243
Support: 941.404.1072
Fax: 941.870.9646
claresupport@clarecontrols.com
www.clarecontrols.com