

ClareVue Lighting Master Switch and Dimmer Integration Notes

Content

Preface...	1
Introduction...	1
Installing the switch or dimmer...	1
Pairing and configuring the switch/dimmer in the apps...	2
Pairing and configuring the switch/dimmer in Fusion...	6
Using the switch or dimmer in the ClareHome app...	11
Contact information...	12

Last modified: 05/01/18

Preface

For information on Z-Wave and ClareHome, see [Installing Z-Wave with ClareHome](#).

Notes

- When installing Z-Wave devices, ensure that there is nothing inhibiting their signal. Z-Wave relies on radio signals. Metal or thick walls may limit their signal strength.
- We recommend having 2 or more repeating Z-Wave devices.

Introduction

The ClareVue Lighting Master Switches and Master Dimmers integrate with ClareHome via the Z-Wave network. Installers only need to pair (add) the switch or dimmer into ClareHome, and then customize the device.

By integrating the master switches and dimmers into the ClareHome control system, your customers can control the associated lights from their Android or iOS devices.

Installing the switch or dimmer

Only qualified installation technicians should install ClareVue lighting devices. Follow the installation and programming instructions that came with your ClareVue lighting devices.

Note: The switch and dimmer are configurable using the ClareHome app, the Clare Controls Install Assist app, and Fusion.

Pairing and configuring the switch/dimmer in the apps

After installing the switch or dimmer, pair it.

To pair the switch/dimmer using ClareHome or Install Assist:

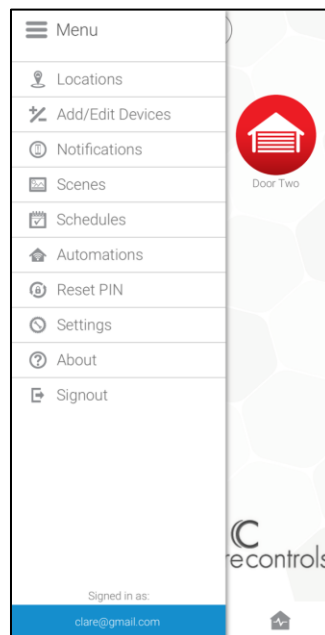
Note: The pairing process is the same for each device.


1. Access the Clare Controls Install Assist app, and then tap **Add Devices**.

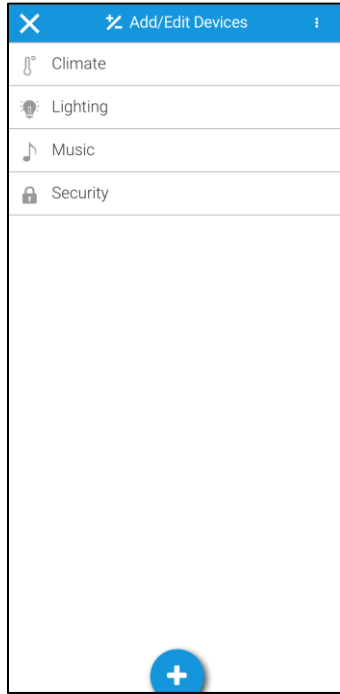


– or –

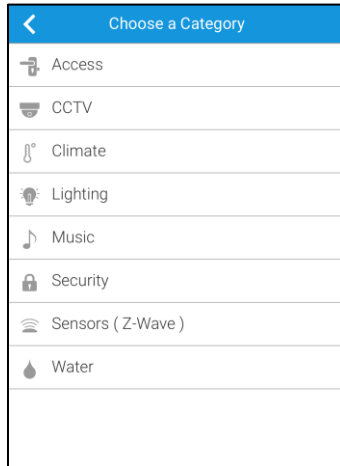
Access the ClareHome Mega Menu, and then tap **Add/Edit Devices**.



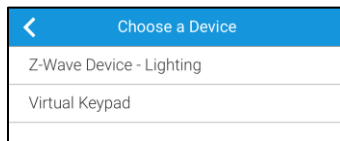
2. At the bottom of the screen, tap the plus icon .



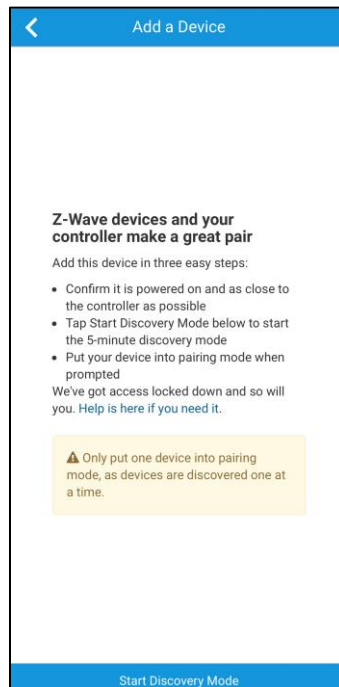
3. Tap **Lighting**.



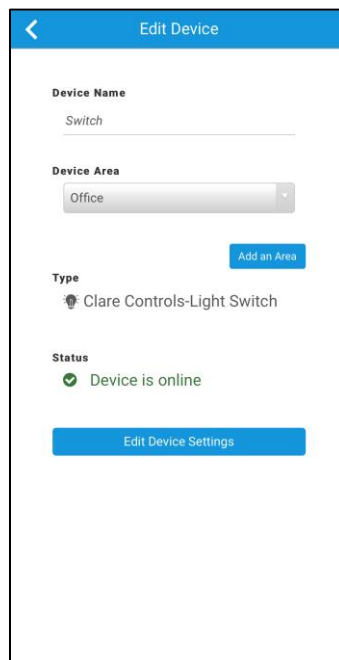
4. Tap **Z-Wave Device - Lighting**.



5. Tap **Start Discovery Mode**, and then pair the device as per the manufacturer's instructions.



6. Enter a name for the switch/dimmer, and then select an area.



7. Tap outside of the area drop-down, and then configure the switch/dimmer settings.

Note: For scene, schedule, notification, and automation configuration, see [ClareHome App Guide \(DOC ID 1750\)](#).

To configure the switch/dimmer settings:

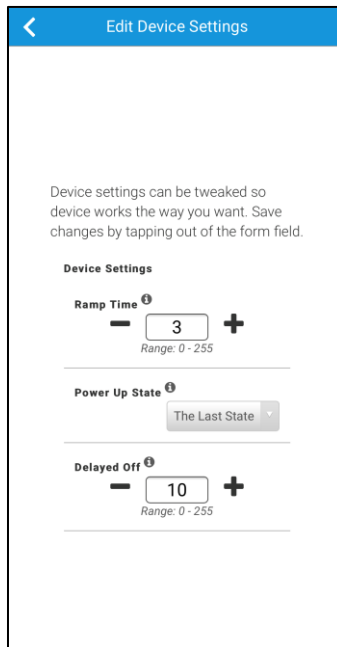
1. Tap **Edit Device Settings**.
2. Configure the device settings as desired.

Ramp Time: (Dimmer only) The amount of time, in seconds, that it takes the dimmer to get to the set let.

Power Up State: When power is removed from the device, for example - from a power outage, the device turns off. The Power Up States is the state that the dimmer returns to when power is returned to the device.

This setting has 3 options: turning on, remaining off, or returning to its last state before it lost power.

Delayed Off: The amount of time, in seconds, that it takes the dimmer to extinguish.




The screenshot shows the 'Edit Device Settings' screen. At the top, there is a blue header with a back arrow and the text 'Edit Device Settings'. Below the header, there is a paragraph of text: 'Device settings can be tweaked so device works the way you want. Save changes by tapping out of the form field.' Underneath this is the 'Device Settings' section. It contains three settings: 'Ramp Time' with a value of 3 and a range of 0 - 255; 'Power Up State' with a dropdown menu showing 'The Last State'; and 'Delayed Off' with a value of 10 and a range of 0 - 255.

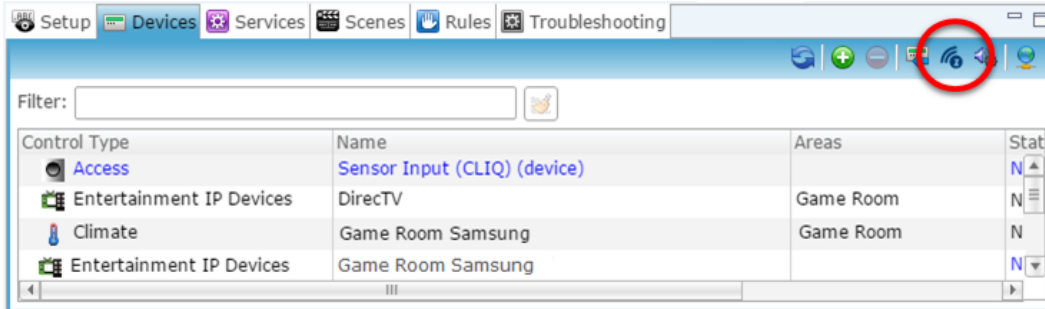
3. Tap outside of the drop-down menu/text field.
The device information automatically saves.

Pairing and configuring the switch/dimmer in Fusion

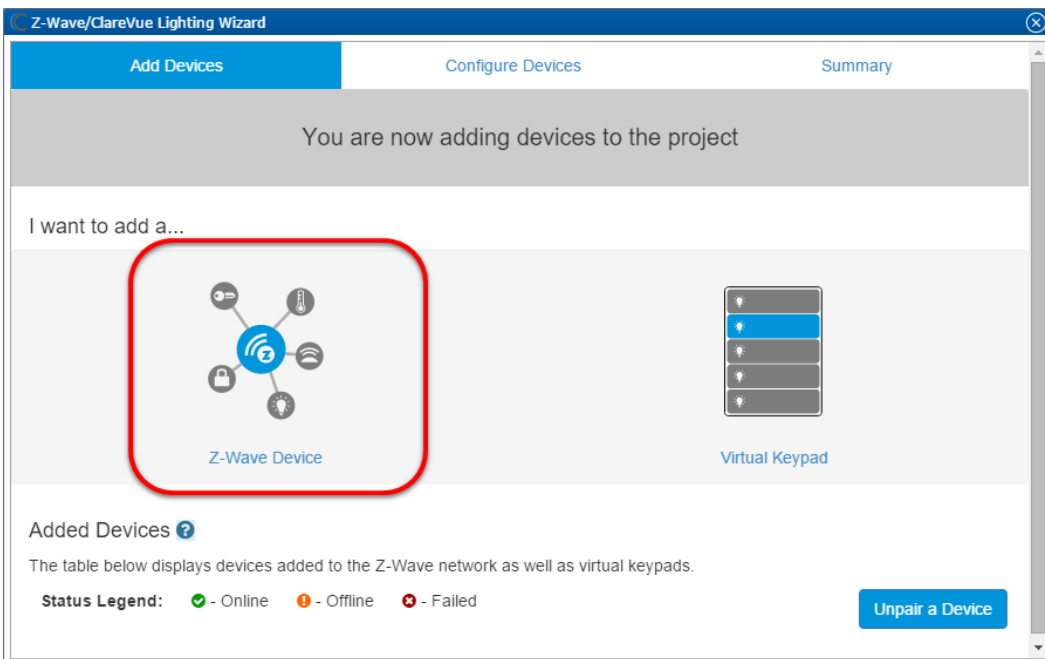
After installing the switch or dimmer, pair it.

To pair the device with Fusion:

1. Access your project, and then click the **Z-Wave Wizard** icon .



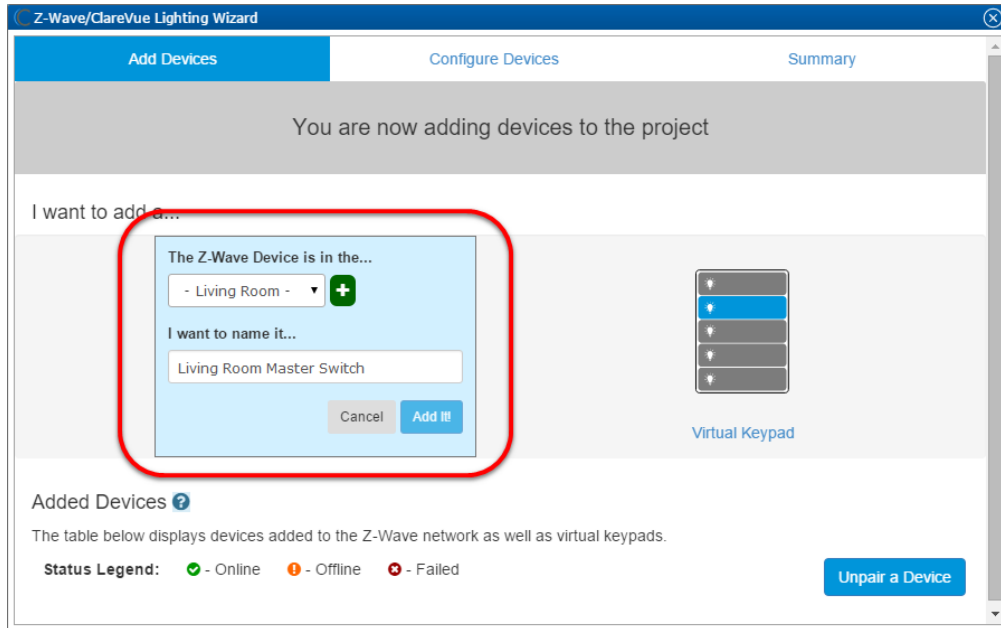
2. Click on **Z-Wave Devices**.



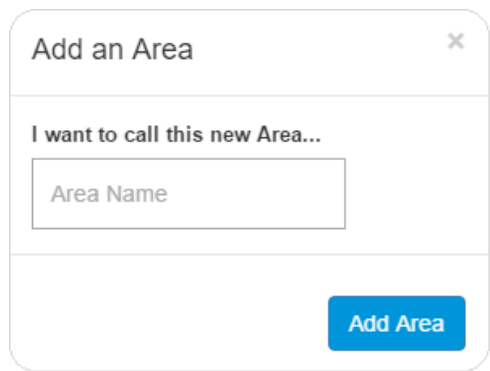
3. Select the device's location, and then enter a name for the device.

Notes

- We recommend naming the device after its location to avoid confusion. For example, Living Room Master Switch.

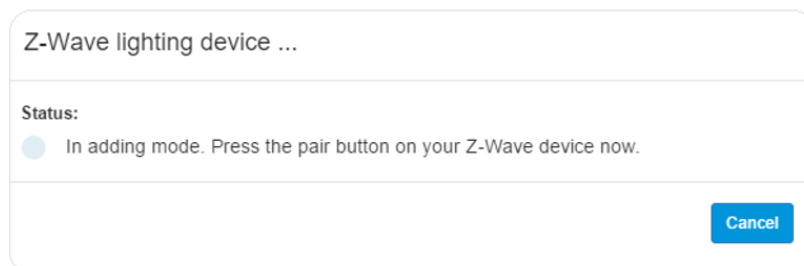


- If you want to add an area, click the green plus icon , enter a name for the area, and then click **Add Area**.



4. Click **Add It!**.

A Z-Wave adding mode dialog displays.

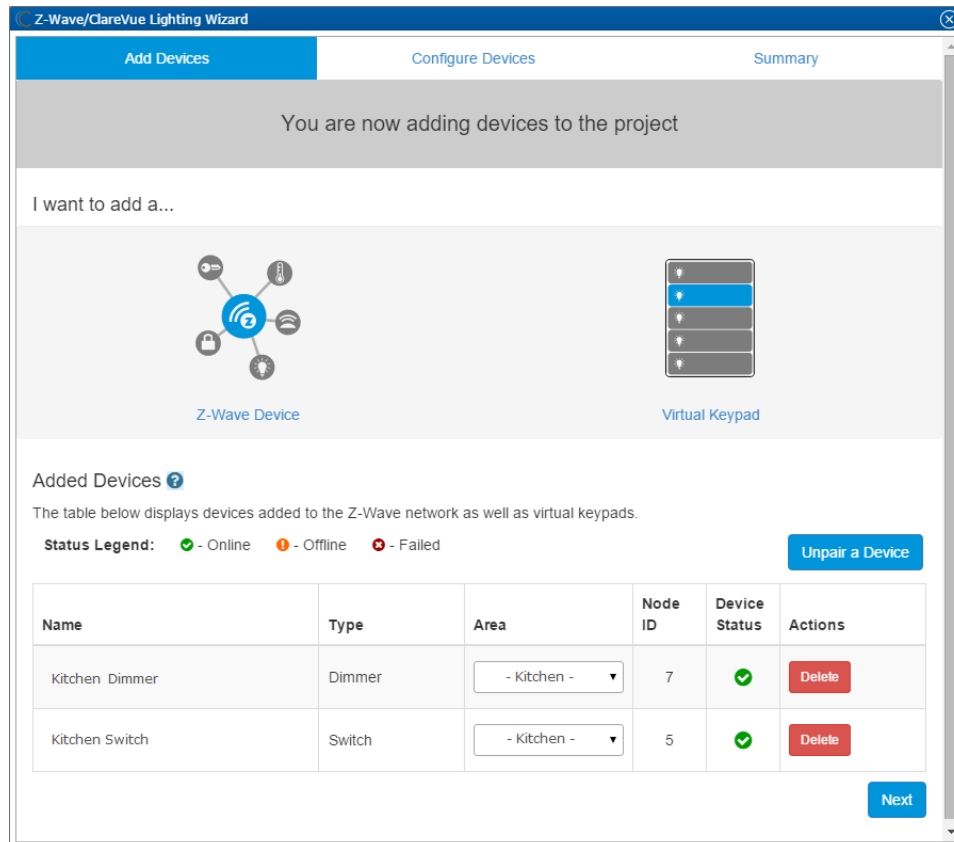


5. Press the main on/off button on the device.

Notes

- Once paired, the light stops blinking.
- The Z-Wave lighting device dialog goes away when the device has been paired.

6. The switch or dimmer appear in in the added devices list.

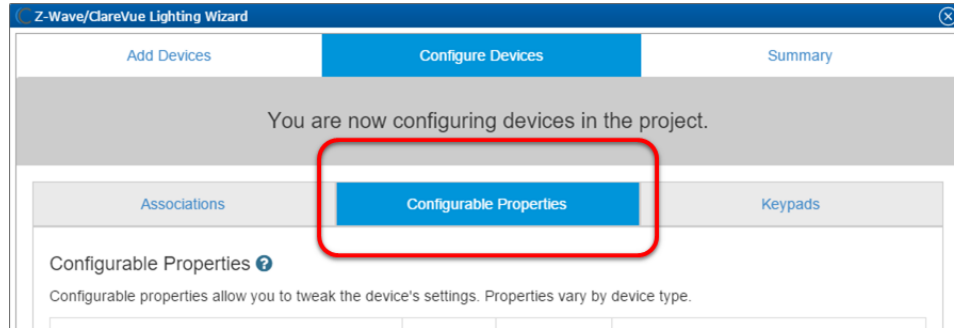


7. If you added a switch, click the **Summary** tab.

– or –

If you added a dimmer, click **NEXT**.

8. On the **Configure Devices** tab, click the **Configurable Properties** sub-tab.



9. Configure the dimmer's properties.

Note: Neutral dimmers have a configurable ramp time, maximum dimming level, and a minimum dimming level. Non-neutral dimmers only have a configurable ramp time.

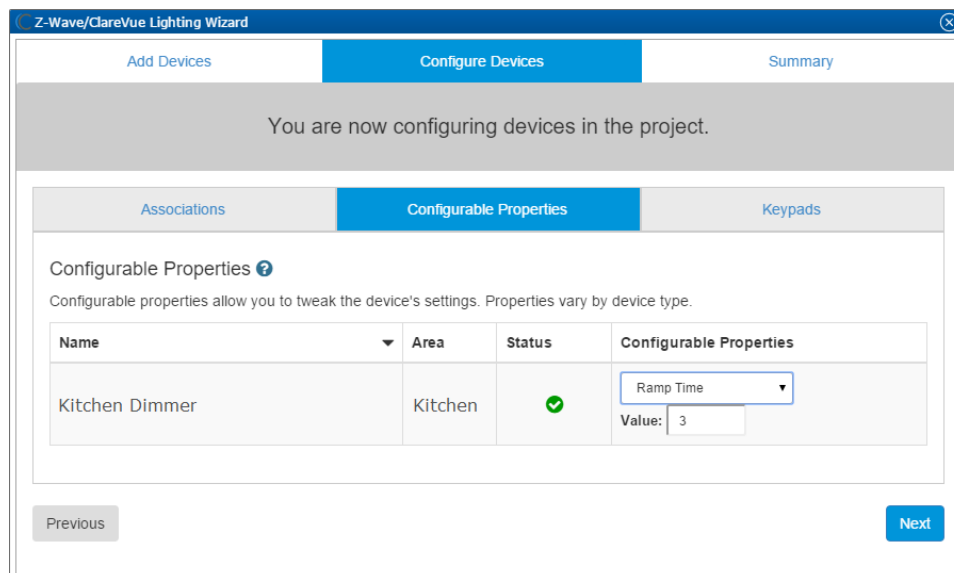
Maximum Dimming Level: The highest light level achievable on the dimmer. This level is set to limit the maximum brightness of the bulb.

Minimum Dimming Level: The lowest light level achievable on the dimmer. This level is set to limit the minimum brightness of the bulb.

Ramp Time: The time in seconds that it will take to reach the maximum dimming level when turned on, and the time to ramp down when turned off.

Notes

- The above options are only available for neutral and non-neutral dimmers.
- These settings should only be adjusted when the user experiences issues with dimmable LED or fluorescent lights.
- Adjusting these settings limits the amount of power that flows into the bulb, this may help the user save money on their electricity bill.



10. Click the **Summary** tab to view all Z-Wave Wizard added devices and their status.

Name	Type	Area	Status	Actions
Kitchen Accessory Dimmer	Accessory Dimmer	Kitchen	✓	Edit
Den Accessory Switch	Accessory Switch	Den	✓	Edit
Game Room Virtual Keypad	Virtual Keypad	Game Room	✓	Edit
Master Bath Dimmer	Dimmer	Master Bath	✓	Edit
Living Room Switch	Switch	Living Room	✓	Edit
Den Dimmer	Dimmer	Den	✓	Edit
Kitchen Switch	Switch	Kitchen	✓	Edit
Kitchen Outlet	Outlet	Kitchen	✓	Edit

11. Click the **Close Window** icon  in the top-right of the wizard to exit and return to the **Devices** tab.

Note: The Z-Wave devices added with the Z-Wave Wizard are automatically imported on the **Devices** tab.

Using the switch or dimmer in the ClareHome app

Once deployed, the user can add the device to their space, and then tap the lighting icon in the ClareHome app to display and operate the devices associated with the switch or dimmer, as shown below.

Figure 1: Master switch on and off

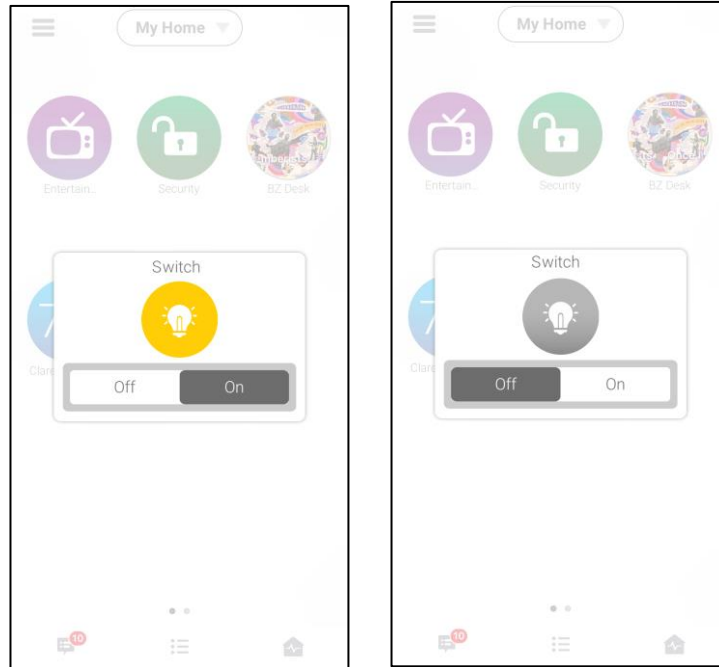
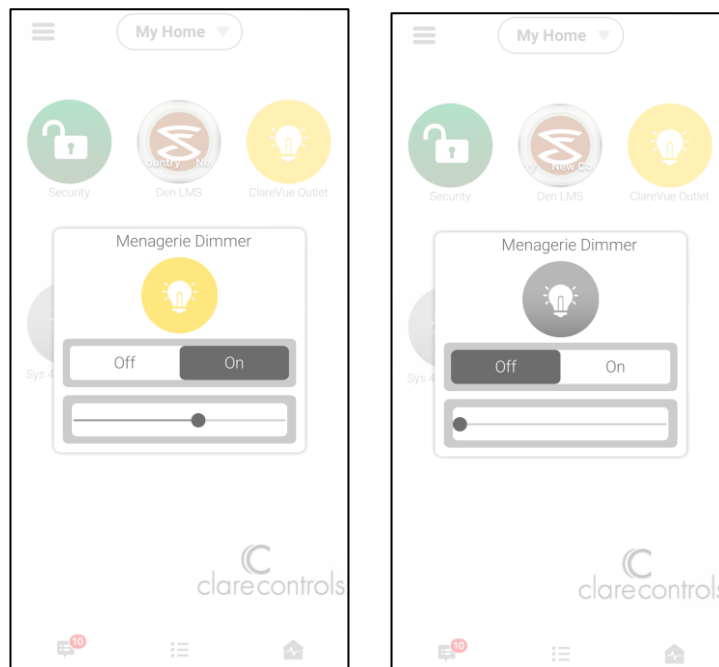


Figure 2: Master Dimmer at 60% and off



Contact information

Clare Controls, LLC.
7519 Pennsylvania Ave, Suite 104
Sarasota, FL 34243

General: 941.328.3991

Fax: 941.870.9646

www.clarecontrols.com

Integrator/Dealer Support: 941.404.1072

claresupport@clarecontrols.com

Homeowner Support (ClareCare): 941.315.2273 (CARE)

help@clarecontrols.com