



# Integrating Clare Controls HDMI and HDBaseT Matrix Switches into a Crestron Project

## Product Bulletin

### Introduction

The Clare Controls CM-MT Series Switcher module lets you integrate the following Clare Controls HDMI and HDBaseT matrix switches into your Crestron project.

#### Matrix switch models

- hdmi.4x4
- hdmi.8x8
- hdmi.4x1
- hdmi.16x16
- hdmi.32X32
- HDBaseT.4x4
- HDBaseT.8x8

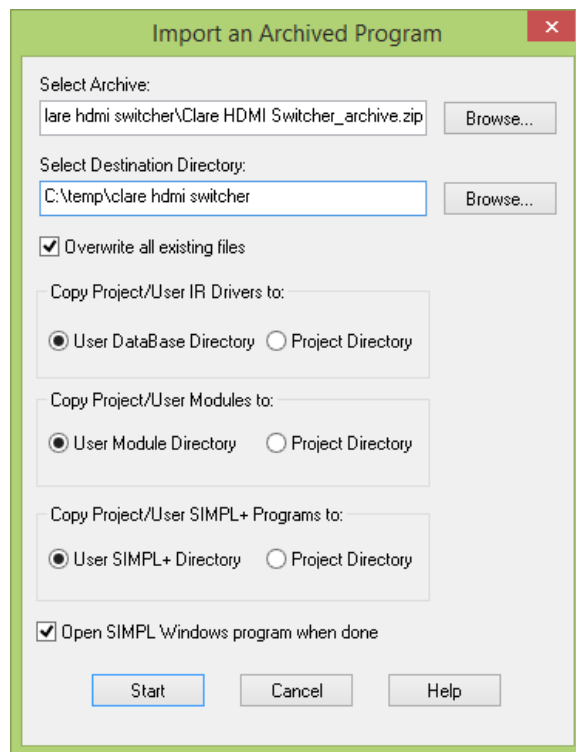
### Supported hardware

This module works with any 2-series or 3-series processor that supports serial ports.

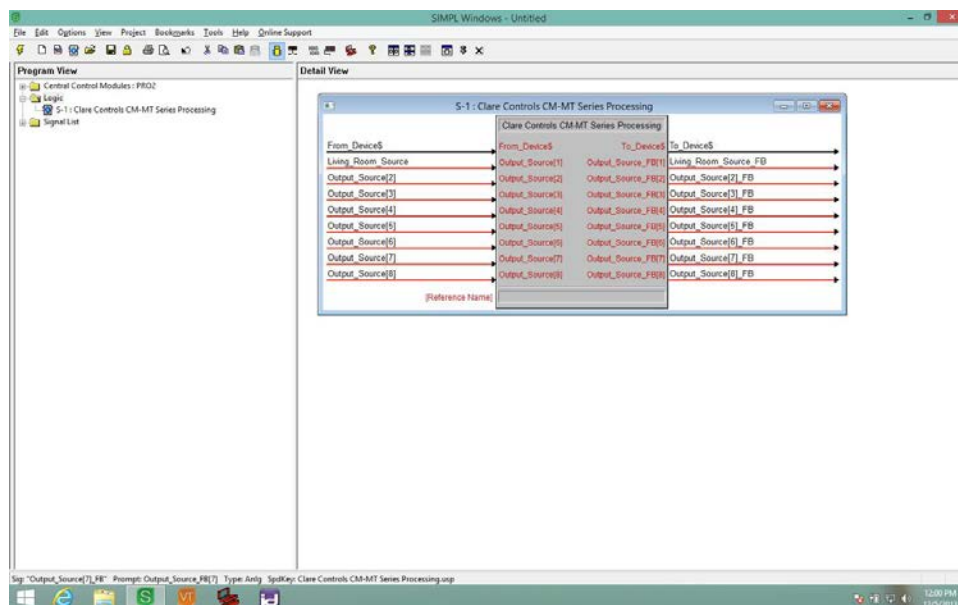
### Configuration

#### To integrate the switcher into your Crestron project:

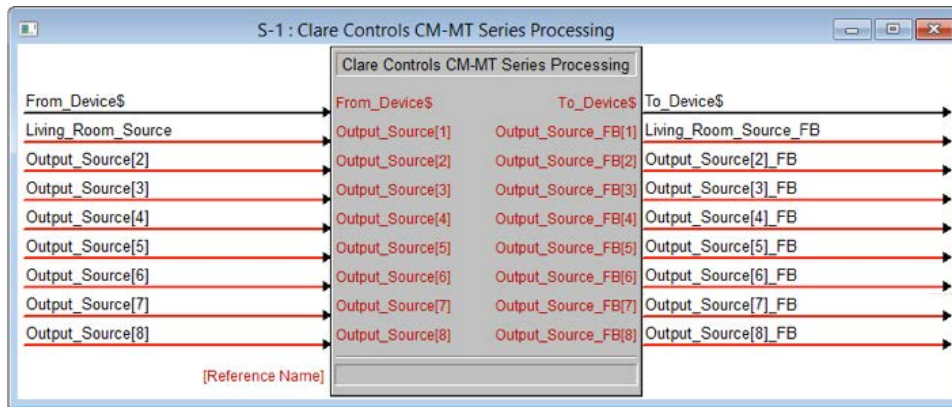
1. Start your Crestron SIMPL Software, and then click File/Import Archive Program.



2. In the Select Archive field, browse to directory where you placed your module file to select and import it. Click Start.
3. Open or create a working Crestron project, and then drag the module into the Logic folder.

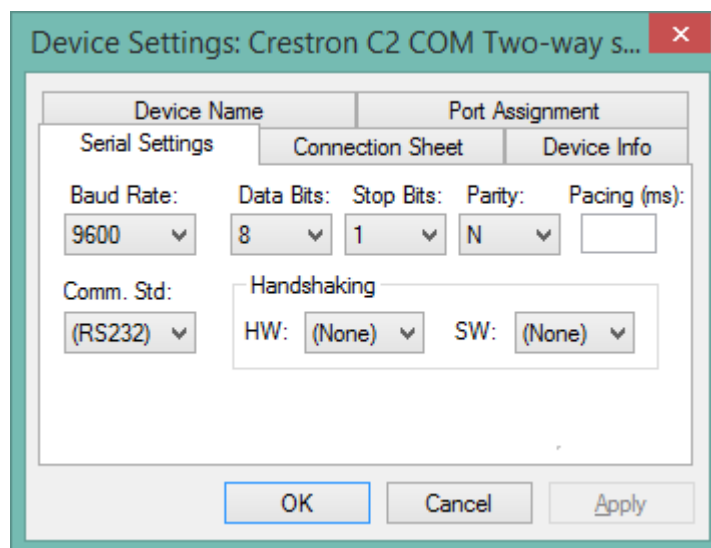


4. Double-click the new module, and then configure it for your project.



5. Next configure the serial settings for your project, as shown below.

- Baud: 9600
- Data bits: 8
- Stop bits: 1
- Parity: N
- Handshaking: None
- Cable type: straight though



6. Save your settings.

# Customer support information

For questions about Clare Controls products, please contact us at:

Clare Controls Inc., 7519 Pennsylvania Avenue, Suite 104, Sarasota, FL 34243

Support: 941.404.1072

Fax: 941.870.9646

<http://support.clarecontrols.com>

[www.clarecontrols.com](http://www.clarecontrols.com)