



# Onkyo Receiver Integration Notes

## Content

Introduction...	1
Installation...	1
Connecting the receiver to the ClareHome data network...	2
Configuring the receiver in Fusion...	2
Creating a service for the receiver...	4
Contact information...	7

**Last modified:** 10/23/15

## Introduction

You can integrate the Onkyo receiver to a ClareHome control system so that your customers can send commands to the receiver from their Android smartphone or iOS device. ClareHome supports the following features:

- IP control
- Volume, including mute
- Media source
- Main zone support

The Onkyo receiver integrates with the ClareHome system in a way similar to other entertainment device integrations. All entertainment integrations share a common UI, so that the user experience is consistent.

## Installation

A qualified installation technician should install the Onkyo Receiver. Refer to the installation instructions that came with your Onkyo equipment.

**Note:** You must set a static IP address for your receiver.

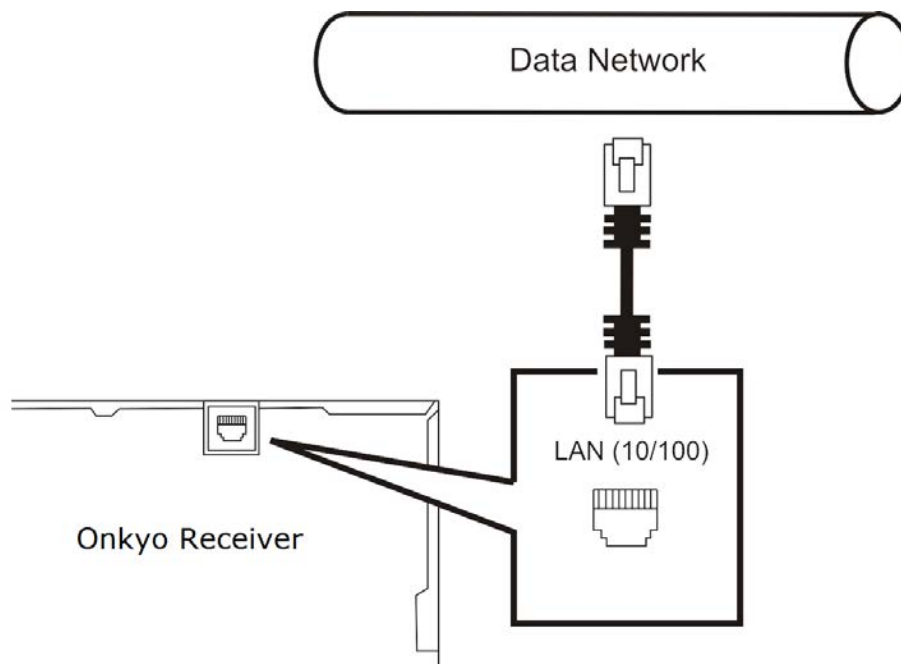
## Connecting the receiver to the ClareHome data network

After installing the Onkyo receiver, connect it to the ClareHome data network.

**To connect the Onkyo receiver to the ClareHome data network with an IP connection:**

1. Attach one end of an Ethernet cable (not included) to the LAN port on the back of the receiver. See Figure 1.
2. Attach the other end of the cable to a router on your ClareHome data network.


Figure 1: Connecting to the ClareHome data network via IP

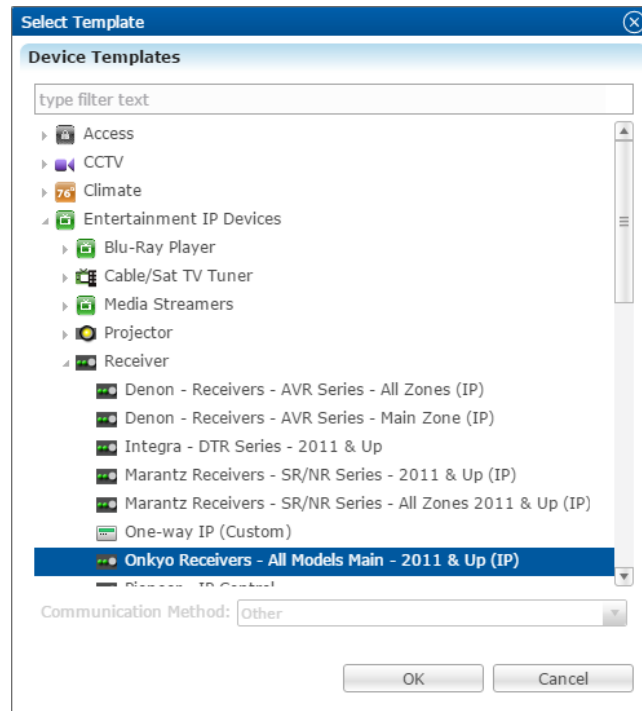


## Configuring the receiver in Fusion

Once you have installed your Onkyo receiver, add and configure it in Fusion. Follow the steps below to configure your Onkyo receiver in Fusion.

## To add an Onkyo receiver in Fusion:

1. Click the **Devices** tab, and then click the **New Device** button . This displays the Select Template dialog.

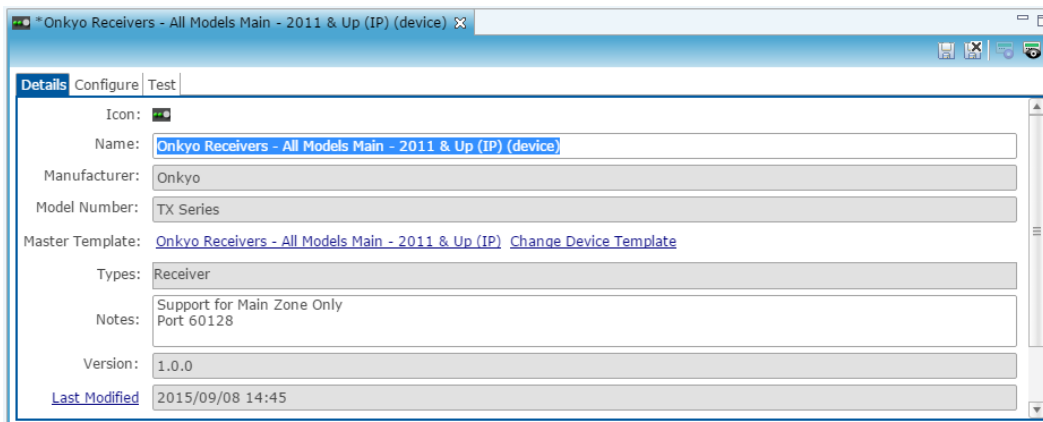


2. Expand the Entertainment IP Devices drop-down, and then browse to **Onkyo Receivers - All Models Main - 2011 & UP (IP)**.

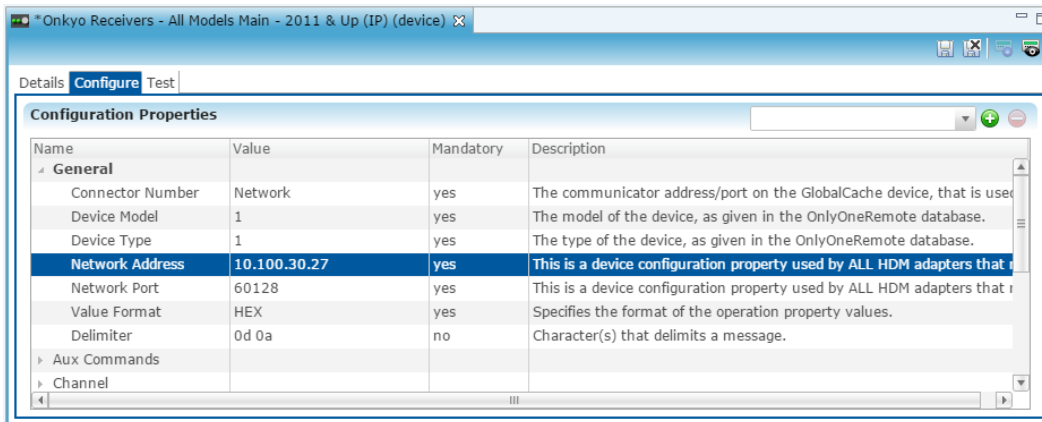
**Entertainment IP Devices > Receiver > Onkyo Receivers - All Models Main - 2011 & UP (IP)**


3. Click **OK**.

The **Details** tab displays.



4. Enter a name and notes for the device and then click the **Configure** tab.




5. Enter the receiver's network IP address in the **Network Address** field, and then enter the network port number in the **Network Port** field.
6. Click the **Save** button .

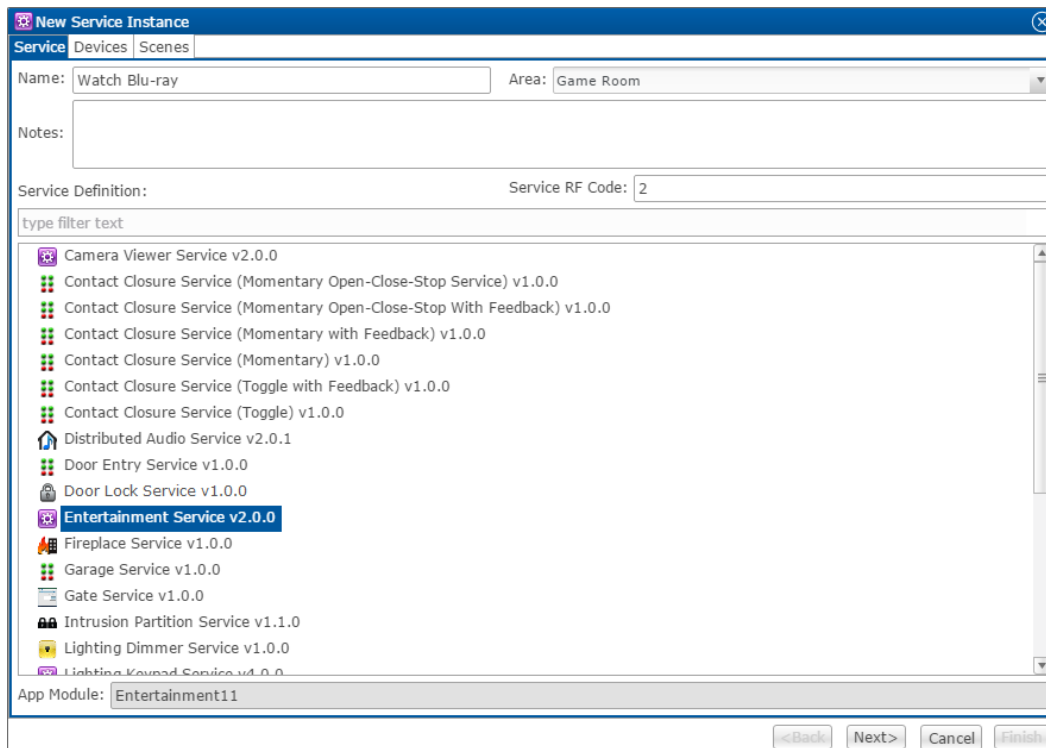
## Creating a service for the receiver

Once you have installed and configured the receiver in Fusion, create an entertainment service.

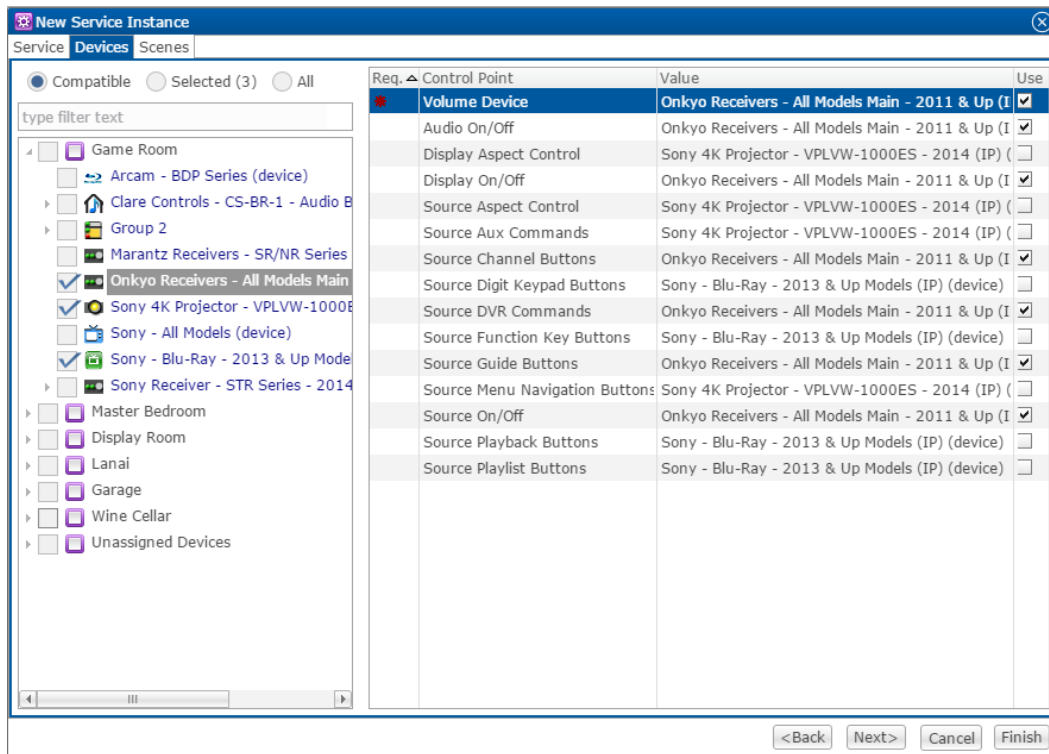
**To create an entertainment service for the receiver:**

1. Click the **Service** tab, and then click the **New Service** icon .

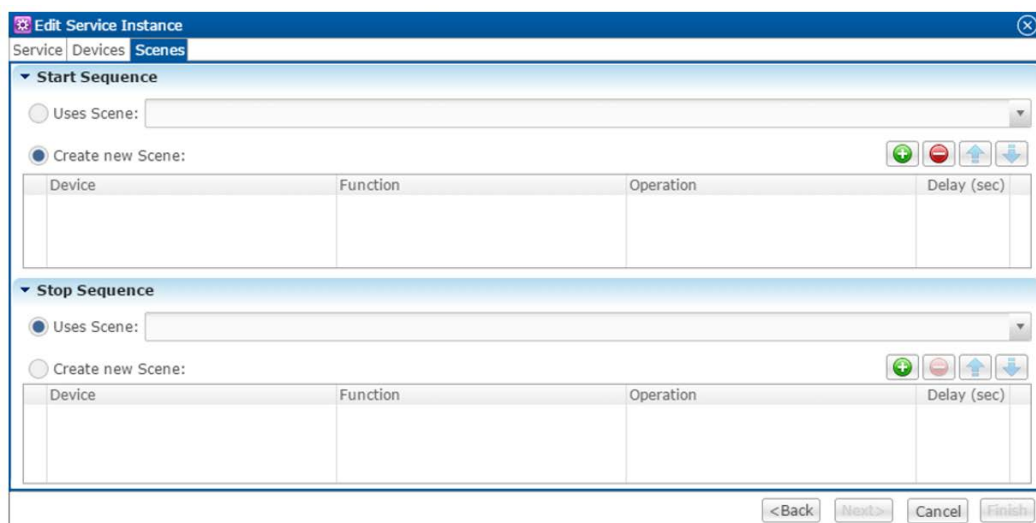
The New Service Instance dialog displays.



2. Enter the name of the service in the **Name** field, select the area, and then click **Entertainment Service**.
3. Click **Next** to display the **Devices** tab.

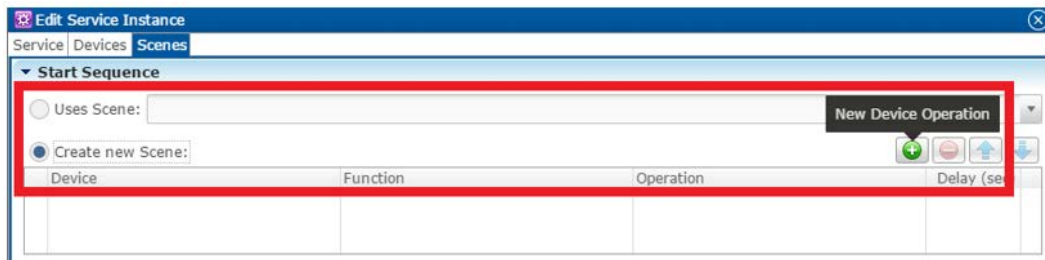


3. In the left panel, select the devices you want to use in the service.
4. In the right panel, set the values for each control point by clicking the **Value** field to view the drop-down menu, and then selecting the device.
5. Click **Next** to display the **Scenes** tab.

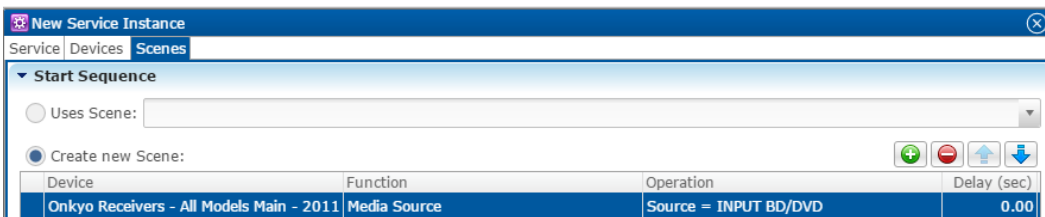


## To configure the scene:


1. In the **Start Sequence** field, select **Create new Scene**, and then click the **New Device Operation** button .

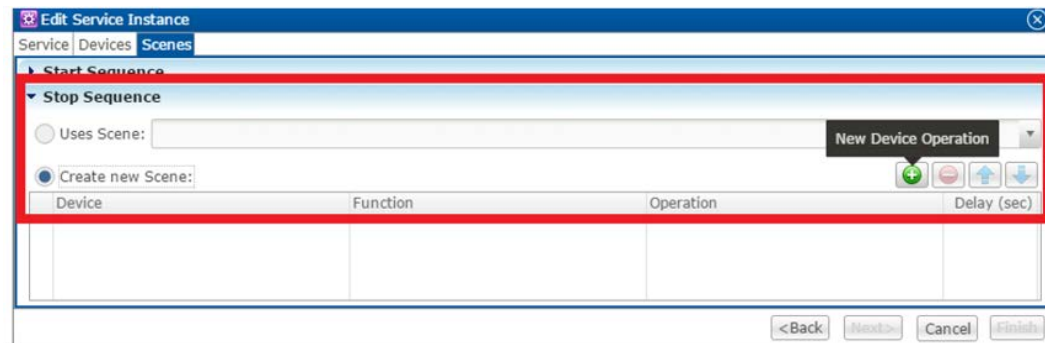


2. Configure the **Device**, **Function**, and **Operation** drop-down menus with the following values.
  - **Device:** Onkyo Receiver – All Models Main – 2011
  - **Function:** Switch
  - **Operation:** Turn On



3. Repeat steps 1 and 2 for each device being used in the scene.

**Note:** A device can have more than one action. You can set the receiver to turn on, and then have the receiver switch sources 5 seconds later.
4. Go to the **Stop Sequence** field, select **Create new Scene**, and then click the **New Device Operation** button .



5. Configure the **Device**, **Function**, and **Operation** drop-down menus with the following values.

- **Device:** Onkyo Receiver – All Models Main – 2011
- **Function:** Switch
- **Operation:** Turn Off

**New Service Instance**

Service | Devices | **Scenes**

Start Sequence

Uses Scene:

Create new Scene: + - ↑ ↓

Device	Function	Operation	Delay (sec)
Onkyo Receivers - All Models Main - 2011	Switch	Turn On ()	0.00
Sony - Blu-Ray - 2013 & Up Models (IP) (	Menu Navigation	Title Menu ()	0.00
Sony 4K Projector - VPLVW-1000ES - 20	Switch	Turn On ()	0.00

Stop Sequence

Uses Scene:

Create new Scene: + - ↑ ↓

Device	Function	Operation	Delay (sec)
Onkyo Receivers - All Models Main - 2011	Switch	Turn Off ()	0.00

<Back Next> Cancel Finish

6. Repeat steps 4 and 5 for the other devices that you are using.

7. Click **Finish**.

8. Deploy the project.

## Contact information

Clare Controls, Inc.  
7519 Pennsylvania Ave, Suite 104  
Sarasota, FL 34243  
Support: 941.404.1072  
Fax: 941.870.9646  
claresupport@clarecontrols.com  
www.clarecontrols.com