



Pentair iLink Pool Controller Integration Release Notes

Content

Introduction...1

Connecting the Pentair iLink to the ClareHome data network...2

Configuring in Fusion...4

Contact information...7

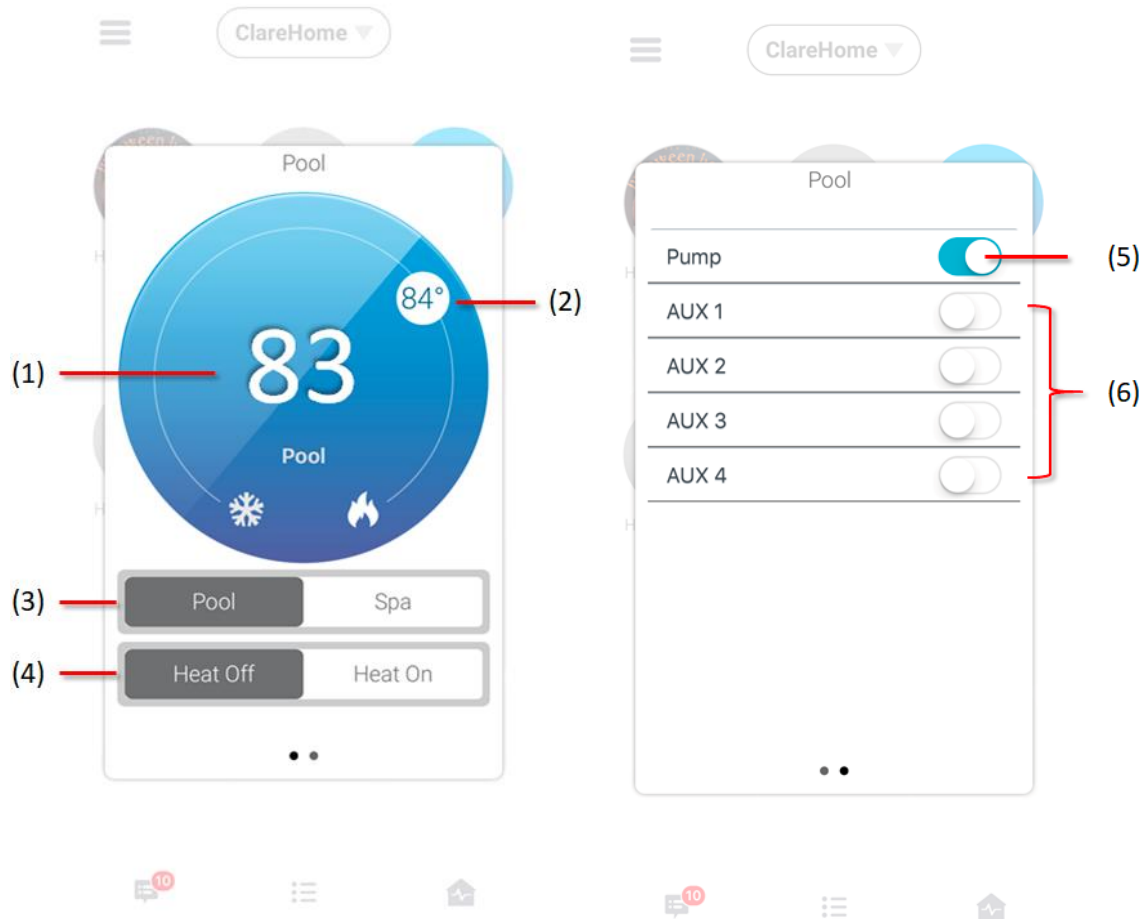
Last modified: 05/07/18

Introduction

You can now integrate your Pentair iLink pool controller via RS-232 into your ClareHome project. You can accomplish the integration via the Pentair iLink Protocol Adapter. This adapter converts the Pentair communications bus to RS-232 for use with your ClareHome system. All feedback on the module is in real-time from the iLink adapter.

The Pentair iLink is a high-performance system that lets you control Pentair iLink pools and spas. Connecting the Pentair iLink to a ClareHome control system lets your customers control the their pool and spa temperatures, lights, and cleaner from their mobile devices, including iPhones, iPads, and Android phones. To adjust the temperature settings, they can simply slide the temperature set point around the dial on their ClareHome display. The following figures show the Pentair iLink controls on the ClareHome UI.

Figure 1: iLink UI Controls



- (1) Temperature displays
- (2) Change the heat set point by sliding the indicator around the dial
- (3) Switch between pool and spa modes
- (4) Turn pool and spa heat on and off
- (5) Pump, must always be enabled
- (6) Auxiliary controls (cleaner, lights, and more)

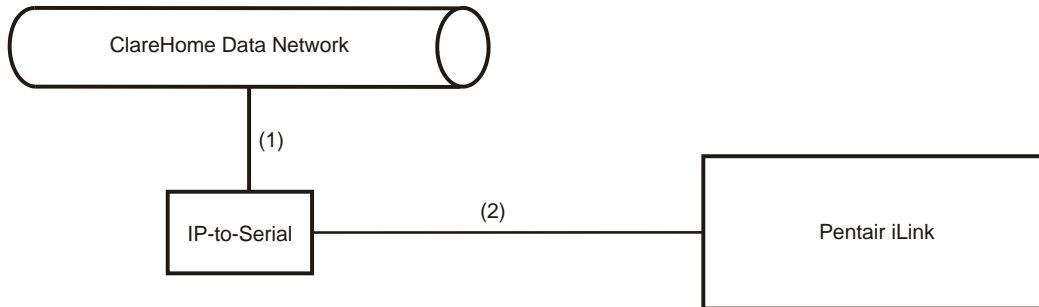
Connecting the Pentair iLink to the ClareHome data network

Once the Pentair iLink is installed, you can connect it to the ClareHome data network, or directly to your CLIQ controller. To make the connection to the ClareHome data network, you will need to attach an IP-to-Serial device to the Pentair iLink and to the ClareHome data network. To make a connection directly to the CLIQ control, connect a serial cable from the Pentair iLink to the serial port on the back of the CLIQ controller.

To connect the Pentair iLink to the ClareHome data network:

1. Attach one end of a Cat 5 networking cable to a port on the ClareHome data network, and then attach the other end of the cable to RJ-45 jack on the IP-to-Serial device. See Figure 4.
2. Attach the one end of an RS-232 cable to the IP-to-Serial device, and then attach the other end to the Pentair iLink device.

Figure 2: Connecting the Pentair iLink to the ClareHome data network



- (1) Cat 5 cable
(2) RS-232 cable

Setting the serial parameters in the IP-to-Serial device

To ensure proper communication between the Pentair iLink and the ClareHome system, you must configure your IP-to-Serial device with the following settings.

Serial Parameter	Setting
Multiple Ports	Disabled
Baud Rate	9600
Flow Control	None
Stop Bits	1
Parity	None
Data Bits	8
Frame Errors	0
Parity Errors	0
Overflow Errors	0

Note: When setting serial parameters in your IP-to-Serial device, refer to the manufacturer's instructions.


To connect the Pentair iLink directly to a CLIQ controller:

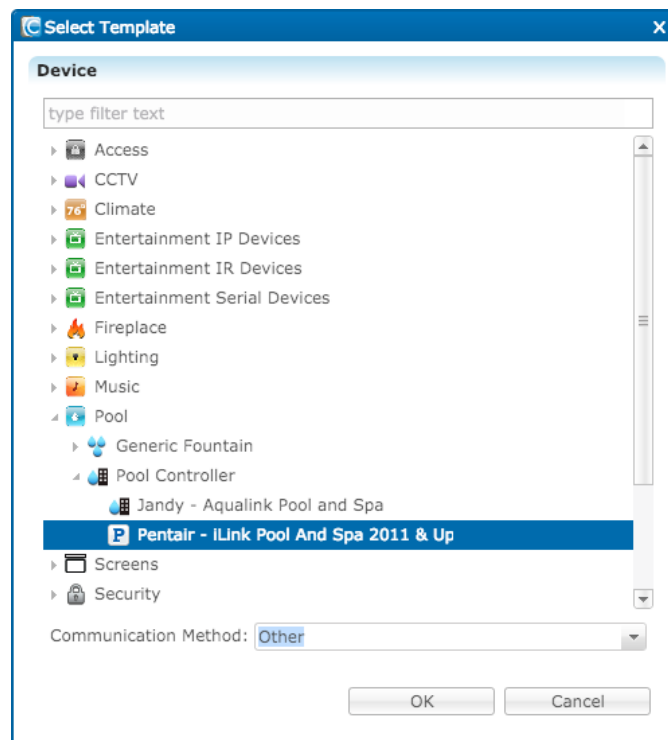
Attach the RJ12 end of an RJ12-to-DB9 connector cable (included with your CLIQ controller) to the RS-232 port on the CLIQ controller, and then attach the DB9 end of the cable to the serial port on the Pentair iLink.

Configuring in Fusion

After setting up and configuring your Pentair iLink device, you must add and configure it in Fusion. Once added, you can use the Service Wizard to add a service for it. The Service Wizard will step you through the process and auto-populate the fields for you. Follow the steps below to add and configure your Pentair iLink device in Fusion.

To add an Pentair iLink device in Fusion:

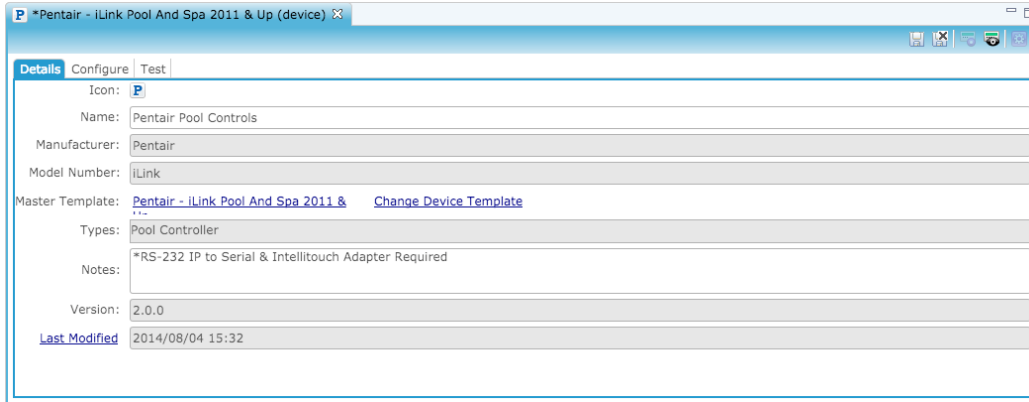
1. Click the **Devices** tab, and then click the **New Device** button  to display the Select Template dialog.



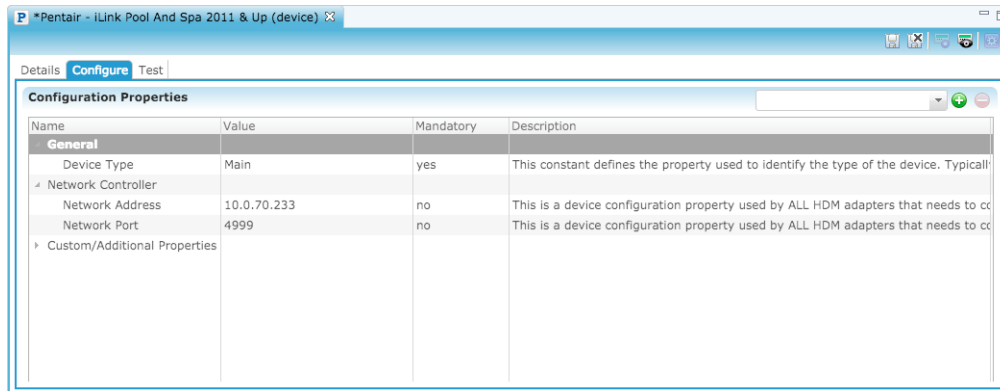
2. Expand the **Pool** folder, and then select **Pentair iLink – Pool and Spa** from the list. Click **OK**.

Note: If you are connecting to the ClareHome network, choose **Other** from the Communication Method dropdown list. Or, if you are connecting directly to a CLIQ controller, choose **CLIQ** from the dropdown list.

- In the Details tab's **Name** field, enter a name for your Pentair iLink device.



- Click the **Configuration** tab.

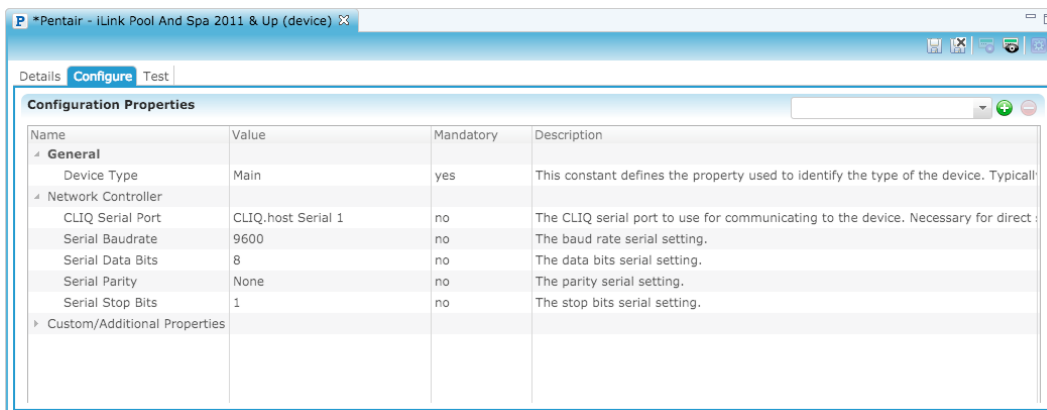



- In the **Network Port** field, enter port number for the IP-to-Serial device that connects the Pentair iLink device with the ClareHome data network.

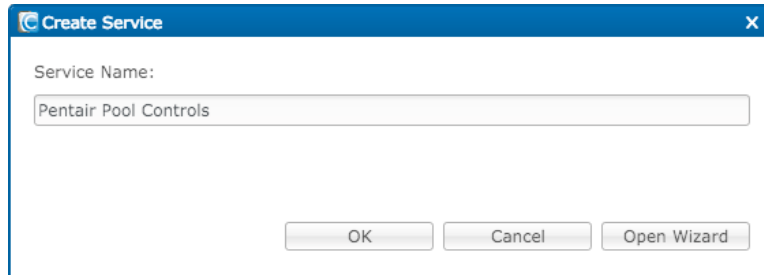
Note: Check the documentation that came with the device to determine the proper network port number.

– Or –

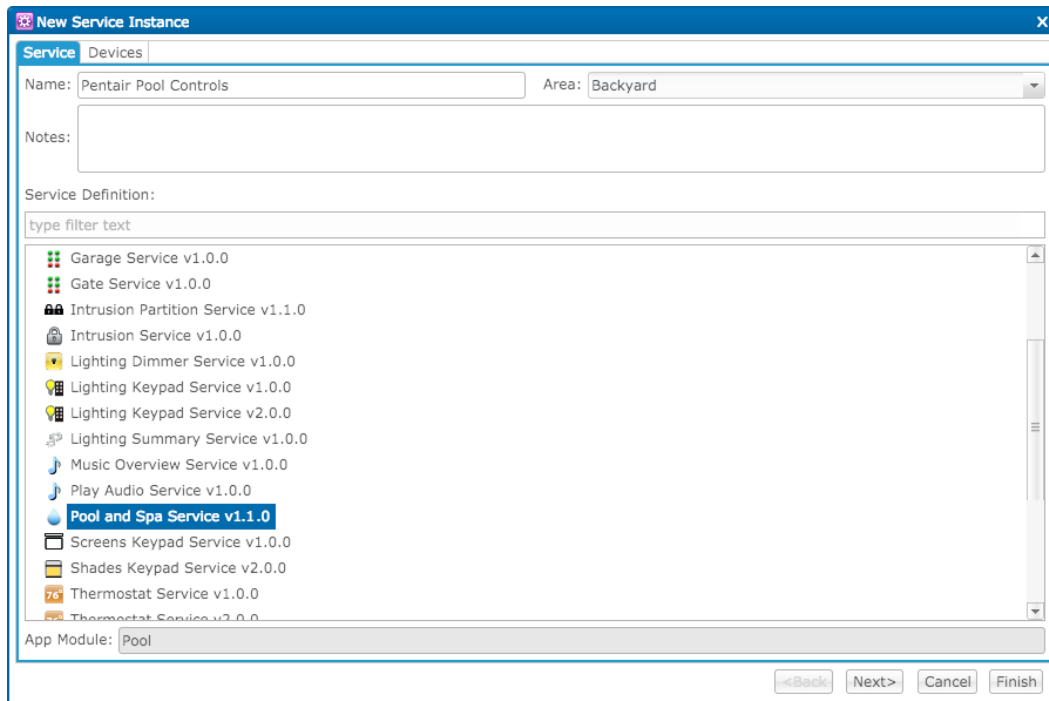
If you are connecting to a CLIQ controller serial port, select a port from the dropdown list in CLIQ Serial Port's **Value** field, as shown below.



6. Click the **Save** button . The Create Service dialog displays.

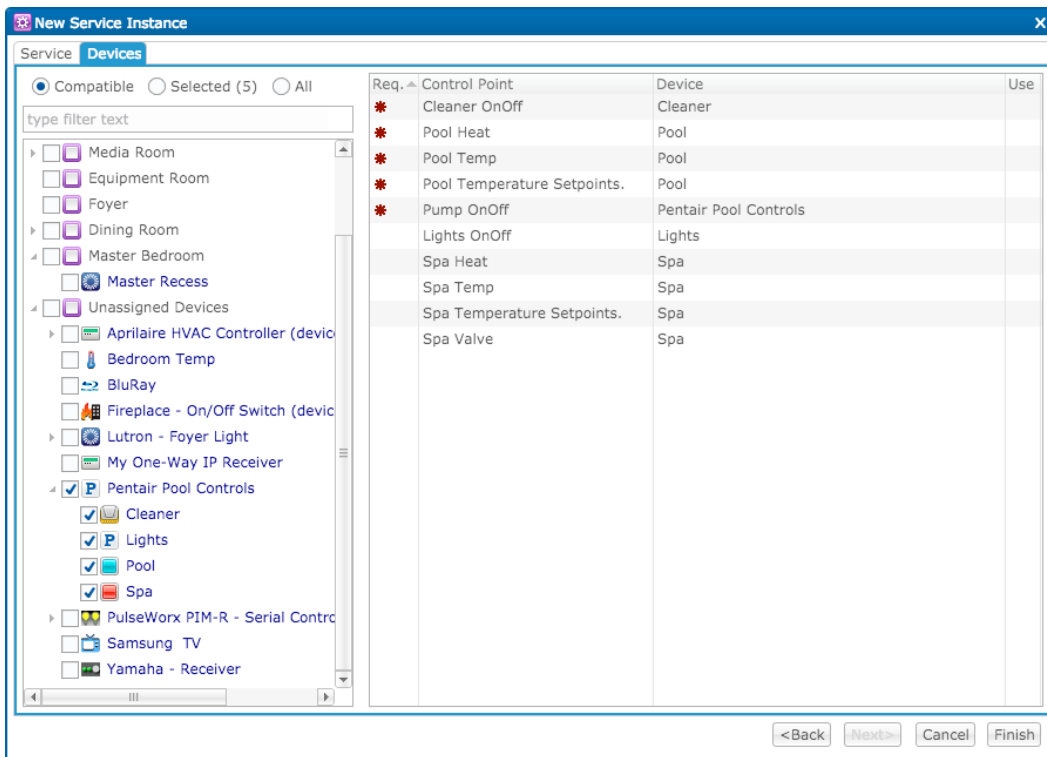


7. Click **Open Wizard** to display the New Service Instance dialog.



8. Ensure the Pool and Spa Service is selected, and then click **Next**.

9. Fusion displays the New Service Instance Devices tab and auto-populates the control points for the Pentair iLink device.



10. Click **Finish**.
11. Be sure to deploy your project.

Contact information

Clare Controls, LLC.
7519 Pennsylvania Ave, Suite 104
Sarasota, FL 34243

General: 941.328.3991
Fax: 941.870.9646
www.clarecontrols.com

Integrator/Dealer Support: 941.404.1072
claresupport@clarecontrols.com

Homeowner Support (ClareCare): 941.315.2273 (CARE)
help@clarecontrols.com