



# RTI Integration Release Notes

## Content

Introduction...	1
Connecting the XP-3 controller to the ClareHome data network...	2
Configuring with Integration Designer...	2
Configuring in Fusion...	6
Button IDs and function commands...	9
Contact information...	10

## Introduction

Clare Controls announces the release of its RTI driver that now lets you integrate Remote Technologies, Inc.'s XP-3 controller and remote control devices into your ClareHome system. The RTI driver contains all the information needed to let you quickly and seamlessly integrate the RTI devices without having to spend time programming each button on those devices. This document describes how to integrate RTI devices into a ClareHome system.

RTI's powerful controller and remotes allow for one-handed system control of sophisticated media systems. The following RTI devices have been tested and certified for integration into the ClareHome system.

- XP-3 Controller
- T2x Remote Control
- T2-B Remote Control
- T1B Remote Control
- T2-Cs+ Remote Control
- T3-V+ Remote Control

When installing RTI devices, you or your technician must use RTI's Integration Designer programming tool. The tool is a Windows software application that runs on your PC or laptop and is available for download to RTI dealers. Use it to import the RTI driver when configuring your RTI devices.

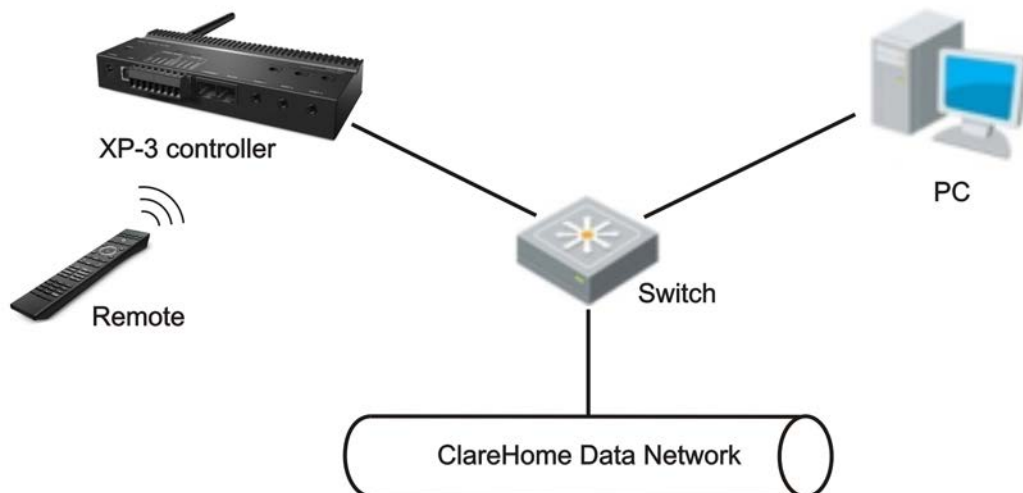
## Connecting the XP-3 controller to the ClareHome data network

For an RTI remote control device to work with your ClareHome system, you will need to attach an RTI XP-3 controller to your ClareHome data network.

### To connect the XP-3 controller to the ClareHome data network:

1. Attach one end of a Cat 5 networking cable to your XP-3, and then attach the other end to a port on a switch connected to your ClareHome data network. (See Figure 1.)
2. Attach a PC to your ClareHome data network. You will need the PC to run the Integration Designer programming software when setting up your device.

Figure 1: Connecting to the ClareHome data network



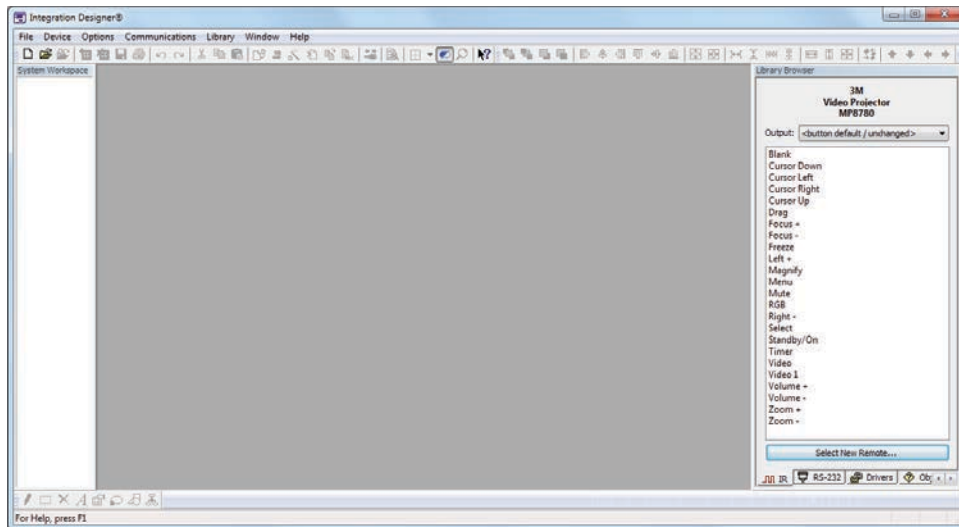
## Configuring with Integration Designer

The RTI Integration Designer programming software is required to configure your XP-3 controller and remote control device.

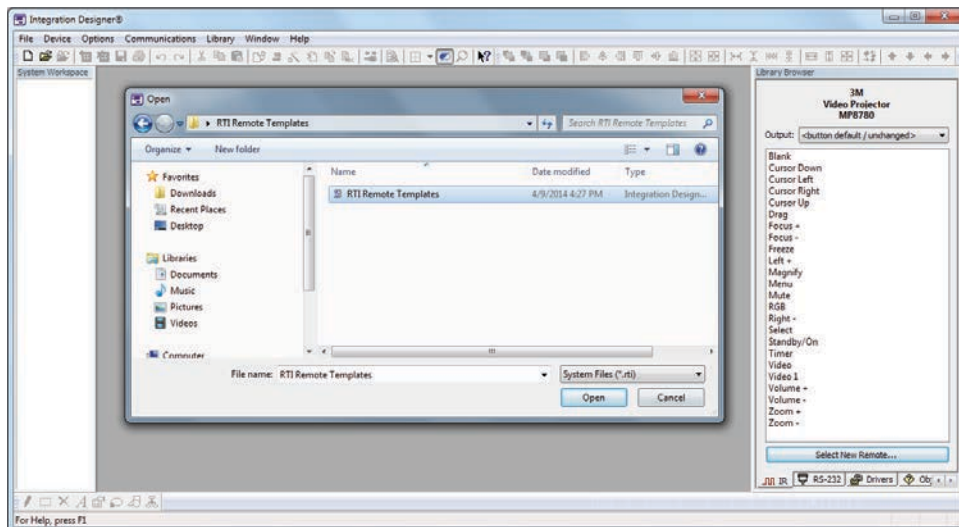
**Note:** Before you begin configuring your project, ensure the XP-3 controller is connected your network.

## To configure the XP-3 and remote control:

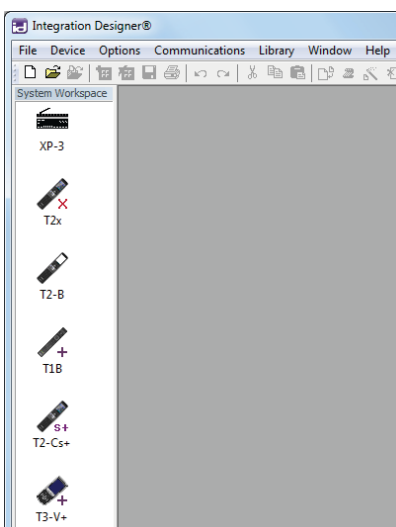
1. Open the Integration Designer software program.



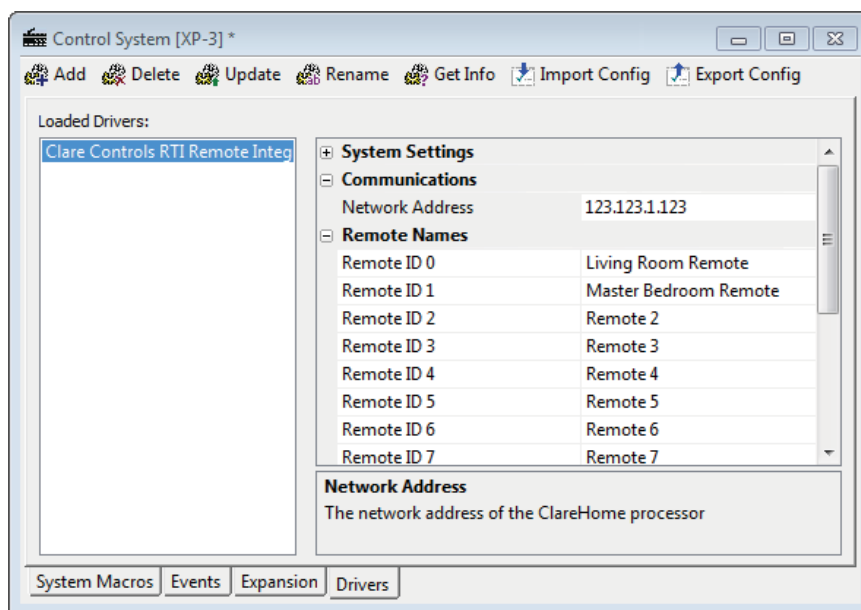
2. From the menu bar, click **File > Open**, and then browse to the folder containing the **RTI Remote Templates.rti** file.




3. Click **Open**. The window's System Workspace area is populated with the XP-3 controller and remote control icons.

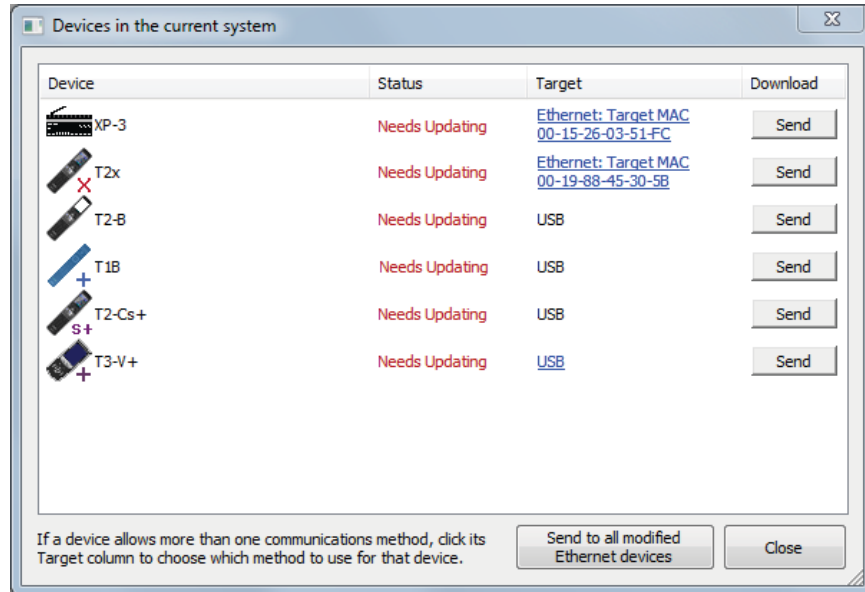


- Click the **XP-3** icon to open the Control System window, and then click the **Drivers** tab.



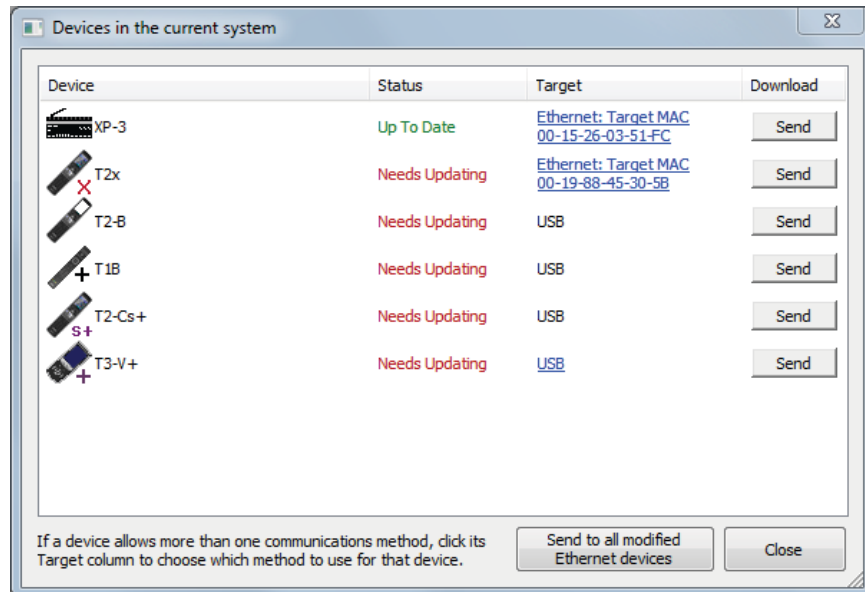
- From the Loaded Drivers list, click **Clare Controls RTI Remote Integration**.
- In the **Network Address** field, enter the IP address of the network used to connect to the XP-3 controller.
- If you have multiple remotes in your project, you can give each a familiar name. Click in the field next to the remote's **RemoteID** number, and then enter a name – for example, Living Room Remote.  
**Note:** Write down the ID number for each remote. You will need this number later when adding the remote in Fusion.
- When finished, click the **Save and Close** button .

9. On the menu bar, click **Communications > Send to Device** to display the devices in the current system.



10. Click the **Send** button for the XP-3 to send the modifications to the device.

When the send completes successfully, the status changes to "Up To Date."

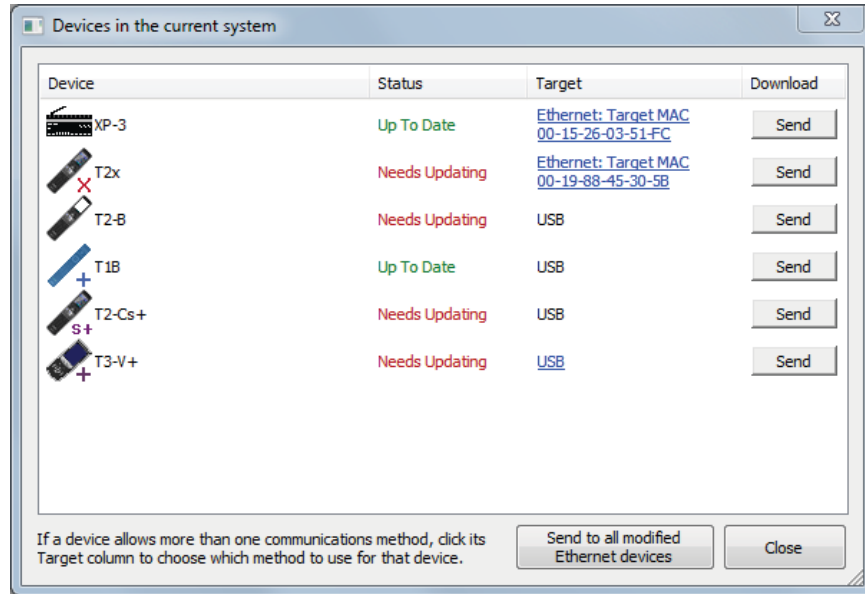


11. Connect one end of the USB cable to your remote control device and the other end to your PC.

**Note:** You must connect the remote control to the PC; otherwise, the program will not be able to send the modifications to the device.

12. Return to the Integration Designer program and click the **Send** button for your remote control type.

When the send completes successfully, the status changes to Up To Date."




13. Repeat steps 10 and 11 for each addition remote control device in your project.

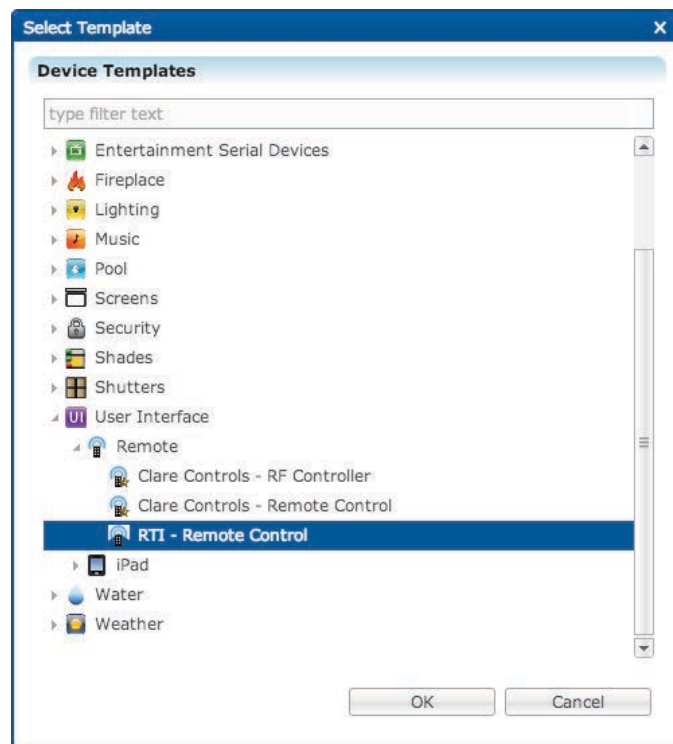
14. When finished, click **Close**, and then exit the Integration Designer program.

## Configuring in Fusion

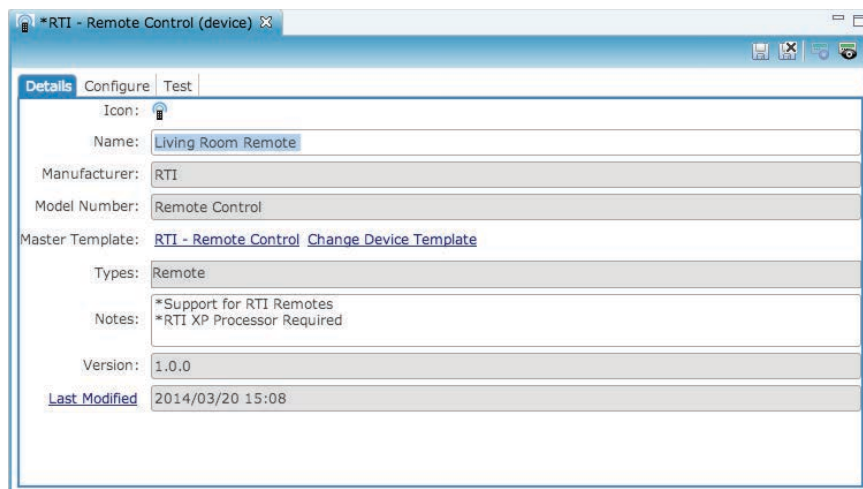
Once you have configured your XP-3 controller and remote control, you must add the RTI remote control to your Fusion project. Follow the steps below to configure your remote control in Fusion.

### To add an RTI remote control in Fusion:

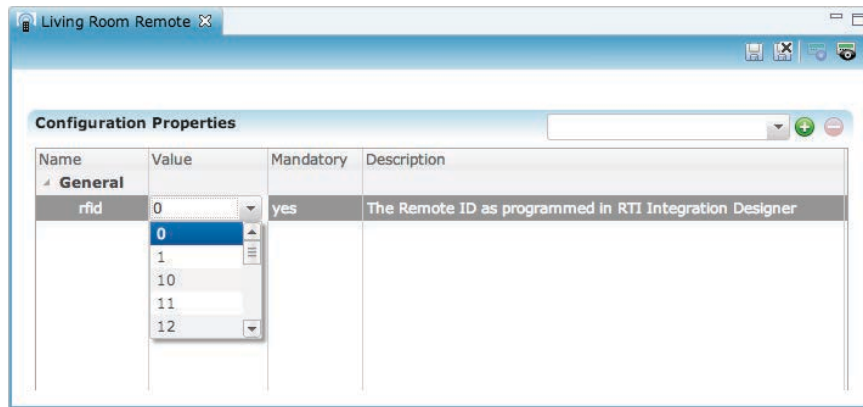
1. Click the **Devices** tab, and then click the **New Device** button  to display the Select Template dialog.




2. Expand **User Interface > Remote**, and then select **RTI - Remote Controls** from the list.
3. Click **OK**.
4. In the Details tab's **Name** field, enter a name for your RTI remote device.  
In our example, we entered the name "Living Room Remote."



5. Click the **Configure** tab (shown below), and then select the remote's ID number (set in Integration Designer) from the **Value** dropdown list.



6. Click the **Save** button .
7. Repeat steps 1 through 6 for each additional remote control device that you are adding to your project.
8. When finished, be sure to deploy your project.



## Button IDs and function commands

The Clare Controls RTI driver and template are preset with all the functions needed to control select RTI remote controls. However, you may choose to build your own template for an unsupported device type using the Integration Designer software. The following tables list the Clare Controls command type and button IDs and their functions needed to properly map your device for use with your ClareHome system.

**Table 1: Command type IDs**

Command Type ID	Description
0	Rules
1	Service Select
2	Service Functions

**Table 2: Button IDs**

Button ID	Function Command	Button ID	Function Command	Button ID	Function Command
0	Power Off	110	0	135	Select / OK
1	Power On	111	1	136	Menu
2	Power Toggle	112	2	137	Title
3	Channel Previous	113	3	138	Info
4	Channel Up	114	4	139	Exit
5	Channel Down	115	5	140	Red
6	*Mute On	116	6	141	Green
7	*Mute Off	117	7	142	Blue
8	Mute Toggle	118	8	143	Yellow
9	Volume Up	119	9	144	A
10	Volume Down	120	Enter	145	B
101	Play	121	Clear	146	C
102	Stop	122	Dash	147	D
103	Pause	123	*Star	148	*Aspect
104	Next Track / Skip	124	*Pound	150	List
105	Prev Track / Replay	131	Up	151	Popup
106	Fast Forward	132	Down	152	Settings
107	Rewind	133	Left	153	Guide
108	Record	134	Right	154	Page Up
				155	Page Down

## Contact information

Clare Controls, Inc.  
7519 Pennsylvania Ave, Suite 104  
Sarasota, FL 34243  
Support: 941.404.1072  
Fax: 941.870.9646  
Email: [claresupport@clarecontrols.com](mailto:claresupport@clarecontrols.com)  
[www.clarecontrols.com](http://www.clarecontrols.com)