



Sony Android TV IP Driver Integration Release Notes

Content

- Introduction...1
- Installation...2
- Fusion configuration...3
- User interface example...7
- Contact information...9

Last modified: 01/23/17

Introduction

The release of the Sony Android TV IP driver lets you integrate Sony Android televisions with the Clare Controls Network. Customers can now control their Sony Android TV through IP using the Clare Controls Application. No software or download is necessary. Simply connect the Sony TV unit to the home network, and then add the TV in Fusion.

The Sony TV IP Driver supports these TVs:

Note: The following models are supported, additional models may be compatible but have not been tested.

Supported models

- XBR-65X930C
- XBR-75X940C
- XBR-55X900C
- XBR-65X900C
- XBR-43X830C
- XBR-49X830C
- XBR-55X810C
- XBR-65X810C
- KDL-50W800C
- KDL-55W800C
- KDL-65W850C
- KDL-75W850C
- XBR-75X910C
- XBR-55X850C
- XBR-65X850C
- XBR-75X850C

Note: The selected Sony Android TV must support Remote Start. This feature is found in the TV setting's menu.

Installation

Only qualified technicians should install or connect any devices used with Clare Controls products. Refer to the installation instructions that came with your Sony Android TV. Clare Controls does not assume any responsibility for damages caused by improper installation or connection to the data network.

Note: A static IP address must be set for the Sony TV.

To connect the Sony Android TV to the home data network:

1. Access the TV's User Interface menu, and then browse to Remote Start.
Home > Settings > Network > Home Network Setup > Remote Start
2. Set the Remote Start option to On, enabling the TV to be turned on while in standby mode.

To enable Simple IP Control:

Note: If you are using a newer Sony D series TV, enable Simple IP Control.

1. Access the TV's User Interface menu, and then browse to Simple IP Control.
Home > Settings > Network > Home Network Setup > Simple IP Control
2. Set the Simple IP Control option to On, enabling the TV to be turned through IP control.

To set the Sony Android TV's static IP address:

1. Access the Sony TV's User Interface menu, and then browse to **Network Setup**.

Home > Settings > Network > Home Network Setup

2. Select **Expert**, and then **WiFi** or **Wired LAN**.

If you select WiFi, it prompts you to select the WiFi network.

– or –

If you select Wired LAN, it connects to the network automatically.

3. Select **Advanced**, and then **IP Setting**.
4. Set the IP Setting to **Static**.
5. Enter an IP address, and then click **Next**.
6. Enter the Gateway, and then click **Next**.
7. Enter the Network Prefix Link (6 or 24), and then click **Next**.
8. Enter the DNS1, and then click **Next**.


Note: If you do not know the DNS, you can use the Google DNS 8.8.8.8 and 8.8.4.4.

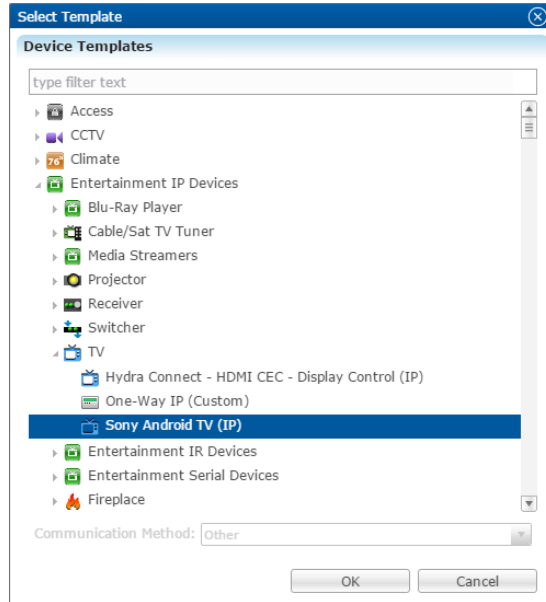
9. Enter the DNS2, and then click **Next**, the IP settings auto save.

Fusion configuration

Configure the device in Fusion to enable the Sony Android TV to function with the Clare Controls UI.

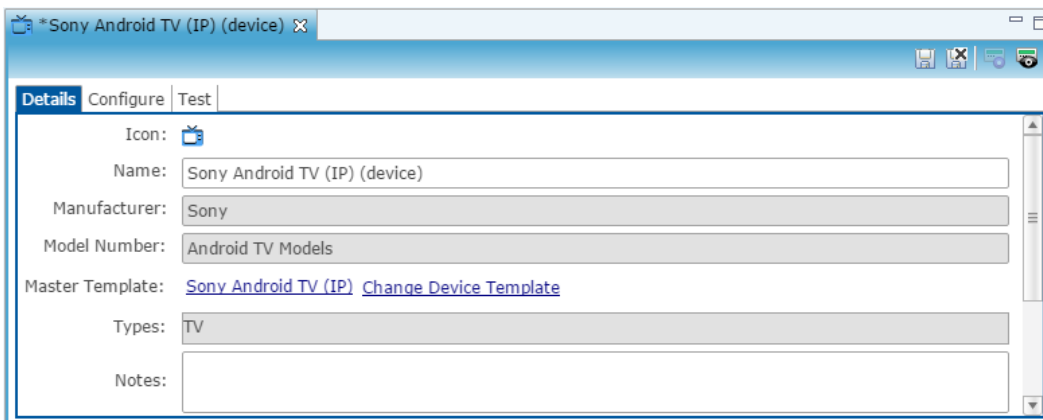
To add the Sony Android TV IP Driver:

1. Open your Fusion project.
2. Click the **Devices** tab, and then click the **New Device** button .
The Select Template dialog displays.

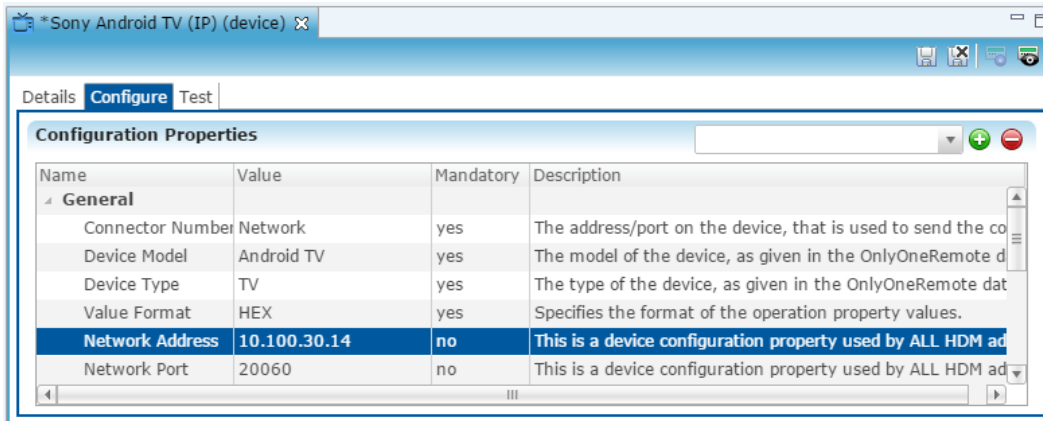


3. Browse to **Sony Android TV (IP)**.
Entertainment IP Devices > TV > Sony Android TV (IP)
4. Click **OK**.

The device **Details** tab displays. If desired, enter a name and notes for the device.




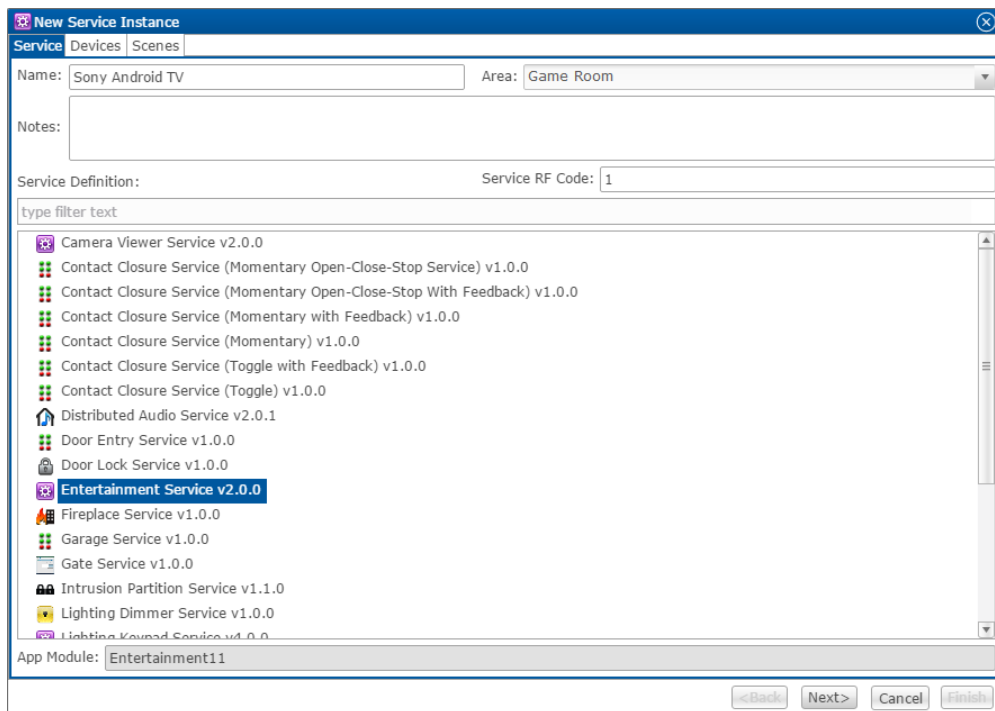
- Click the **Configure** tab, and then enter the Network Address and verify that the Network Port is set to 20060.



- Click the **Save** button .

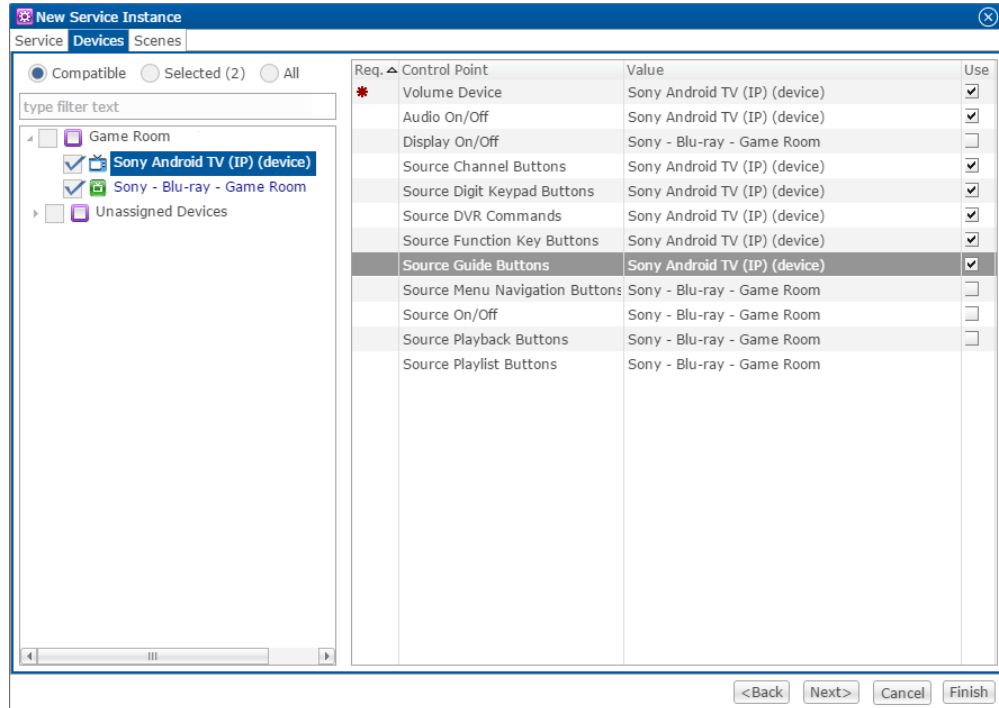
To create a service for the Sony Android TV IP Driver:

- Click the **Services** tab, and then click the **New Service Instance** button . The New Service Instance dialog displays.

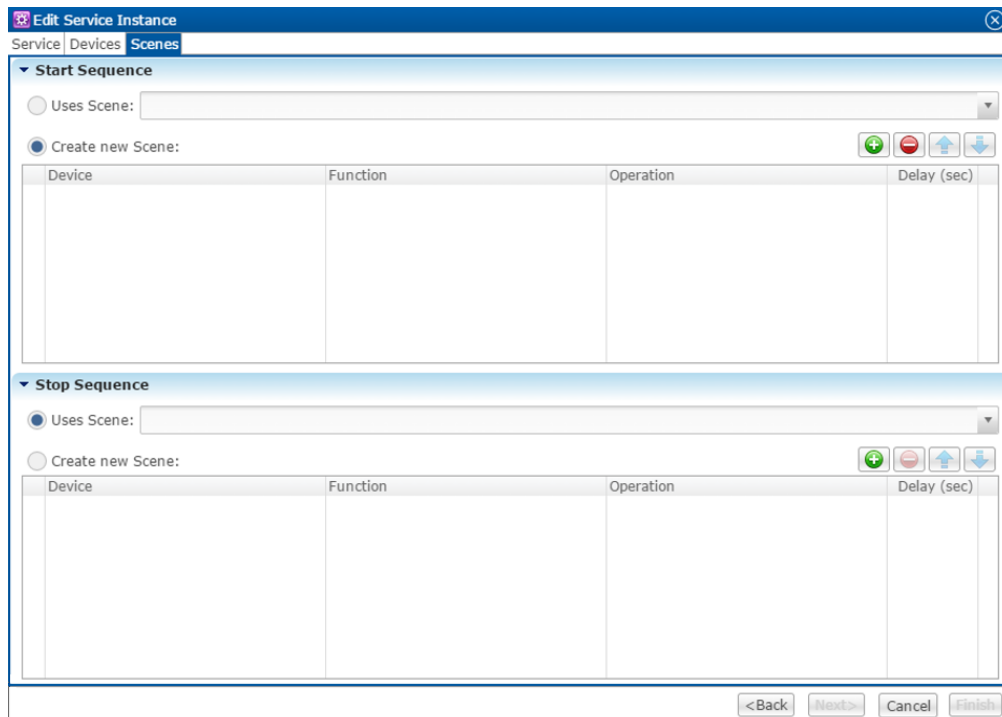


- Enter the name of the service in the **Name** field, select the area, and then click **Entertainment Service**.

- Click **Next** to display the **Devices** tab.

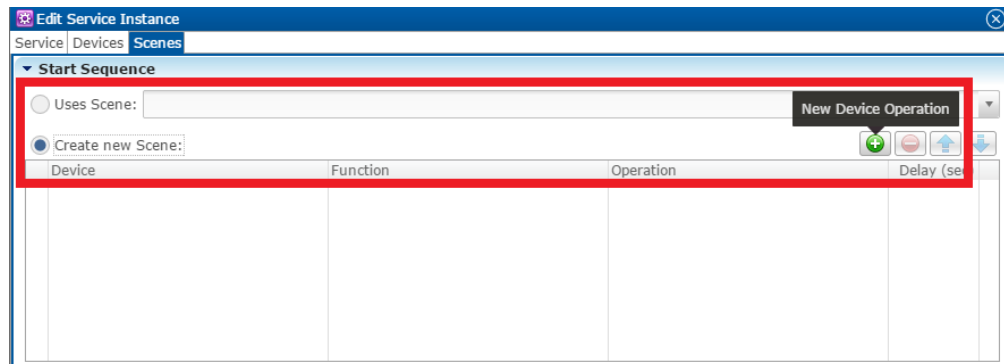


- In the left panel, select the devices you want to use in the service.
- In the right panel, set the values for each control point.
Click the **Value** field to view the drop-down menu and select a device.
- Click **Next** to display the **Scenes** tab.

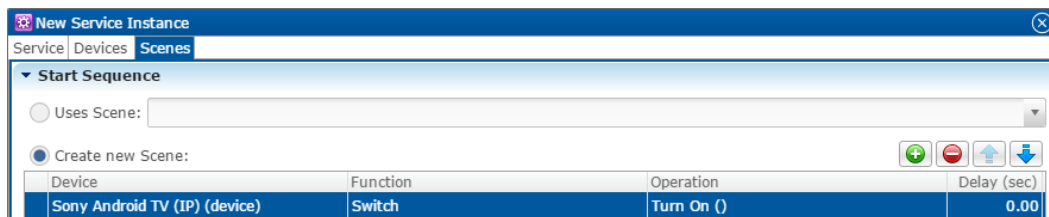



To configure the scene:

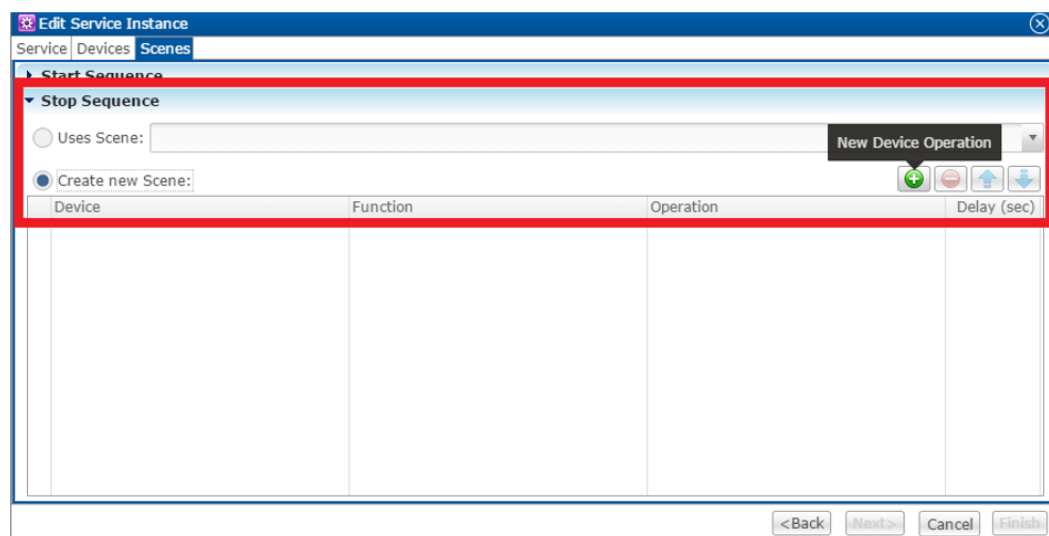
1. In the **Start Sequence** field, select **Create new Scene**, and then click the **New Device Operation** button .



2. Configure the **Device**, **Function**, and **Operation** drop-down menus with the following values.
 - **Device:** Sony Android TV (IP)
 - **Function:** Switch (or other desired action)
 - **Operation:** Turn On

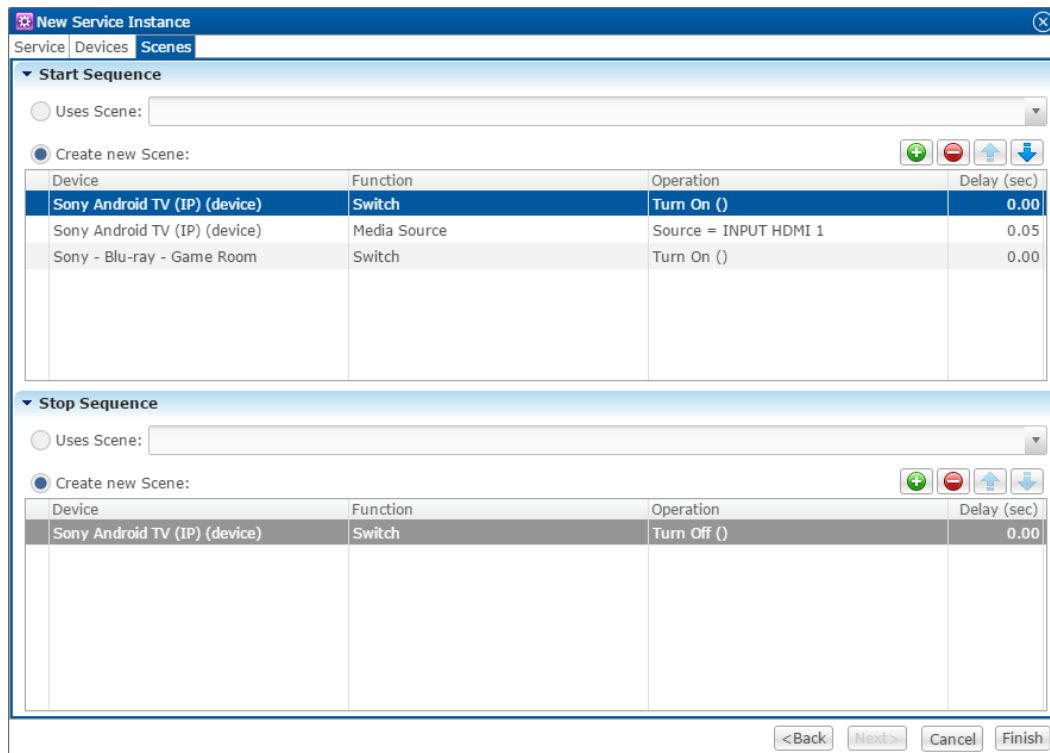


3. Repeat steps 1 and 2 for each device being used in the scene.
4. Go to the **Stop Sequence** field, select **Create new Scene**, and then click the **New Device Operation** button .



5. Configure the **Device**, **Function**, and **Operation** drop-down menus with the following values.

- **Device:** Sony Android TV (IP)
- **Function:** Switch
- **Operation:** Turn Off



6. Repeat steps 4 and 5 for the other devices that you are using.



7. Click **Finish**.

8. Deploy the project.

User interface example

Once you have configured and deployed your project, access the entertainment service created for the projector.



To access the service in the Clare Controls App:

1. Tap  to run the app, and then select your user space.
2. Tap  to view the inventory page.

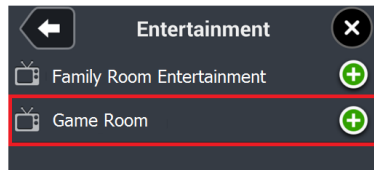
3. Tap **Entertainment**.




4. Tap the area that you want to access – for example, Game Room.
– or –

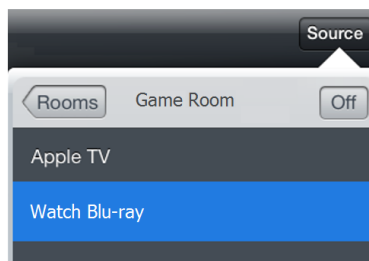
Tap  to add the area to your space. Return to your space and tap  to access the service.

Note: We only recommend adding the service to your space if the service is regularly used.



5. The area displays.

6. Tap  in the top-right corner, and then tap **Watch Blu-ray**.



7. The service entertainment remote displays.



Note: The buttons on the virtual Clare Controls remote correspond with the configured Sony Android TV and Blu-ray control points.

Contact information

Clare Controls, LLC.
7519 Pennsylvania Ave, Suite 104
Sarasota, FL 34243

General: 941.328.3991
Fax: 941.870.9646
www.clarecontrols.com

Integrator/Dealer Support: 941.404.1072
claresupport@clarecontrols.com

Homeowner Support (ClareCare): 941.315.2273 (CARE)
help@clarecontrols.com