



Sony TV IP Driver Integration Release Notes

Content

Introduction...	1
Installation...	2
Fusion configuration...	3
Contact information...	8

Last modified: 09/29/15

Introduction

The release of the Sony TV IP driver lets you integrate Sony televisions 2013 and up with the Clare Controls Network. Customers can now control their Sony TV through IP using the Clare Controls Application. No software or download is necessary. Simply connect the Sony TV unit to the home network, and then add the TV in Fusion.

The Sony TV IP Driver supports these TVs:

Note: The following models are supported, additional models may be compatible but have not been tested.

2013 Models

- XBR 65X900A
- XBR 55X900A
- KDL 55W900A
- KDL 47W802A
- KDL 55W802A
- KDL 32W650A
- KDL 65W850A

2014 Models

- XBR 85X950B
- XBR 65X950B
- XBR 55X900B
- XBR 65X900B
- XBR 79X900B
- XBR 49X850B
- XBR 55X850B
- XBR 65X850B
- KDL 60W630B
- KDL 55W950B
- KDL 65W950B
- KDL 60W850B
- KDL 70W850B
- KDL 55W800B
- KDL 50W800B
- KDL 40W600B
- KDL 48W600B

Note: The selected Sony TV must support Remote Start or “Wake on LAN” for full IP control (Power On). The 2012 and older models do not support “Wake on LAN”.

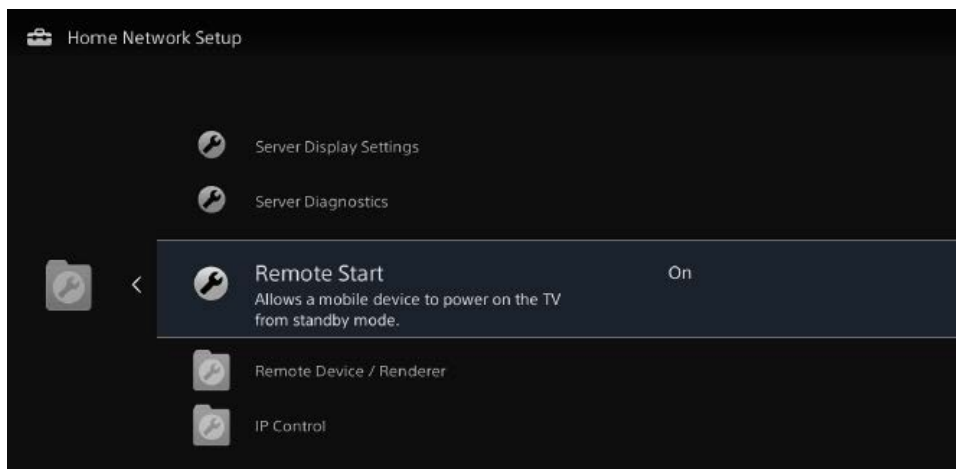
Installation

Only qualified technicians should install or connect any devices used with Clare Controls products. Refer to the installation instructions that came with your Sony TV. Clare Controls does not assume any responsibility for damages caused by improper installation or connection to the data network.

Note: A static IP address must be set for the Sony TV.

To connect the Sony TV to the home data network:

1. Access the Sony TV’s User Interface menu, and then browse to Remote Start.
Home > Settings > Network > Home Network Setup > Remote Start
2. Set the Remote Start option to On.
This enables the TV to be turned on while in standby mode.



3. Browse to the TV's MAC address.

Settings > Network > Network Setup > View Network Settings and Status

4. Write the MAC address down, and then exit the TV menu.

– or –

Write the MAC address down, and then set the Pre Shared Key.

Note: The MAC address is required in Fusion.

To set the Pre Shared Key:

Note: Only TV models 2014 and newer will have a Pre Shared Key option.

1. Access the Sony TVs User Interface menu, and then browse to the IP control settings.

Settings > Network > Home Network Setup > IP Control

Note: The IP Control category name varies based on TV model. The Pre Shared Key is found in the IP control settings.

2. Change the Authentication option to Normal and Pre Shared Key.
3. Select Pre Shared Key, and then enter the desired key.


Note: The Pre Shared Key is alphanumeric. The default setting in Fusion is 1234.

4. Exit the TV menu.

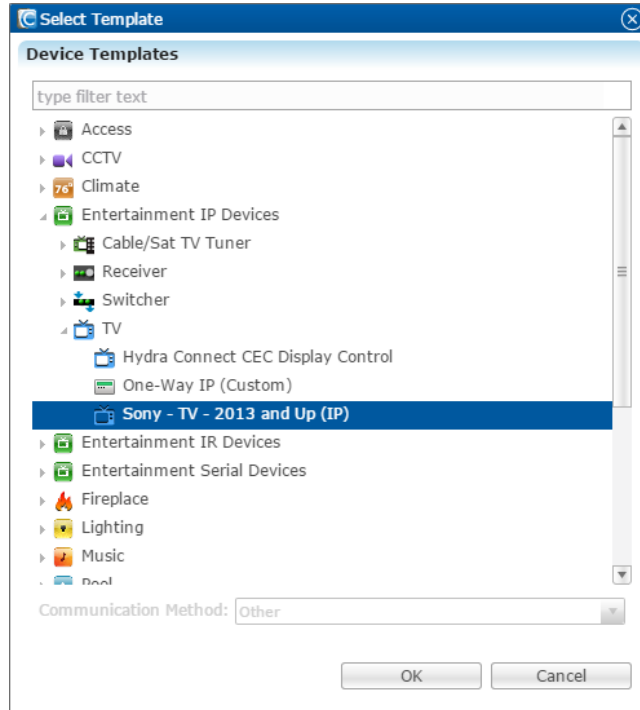
Fusion configuration

Configure the device in Fusion to enable the Sony TV to function with the Clare Controls UI.

To add the Sony TV IP Driver:

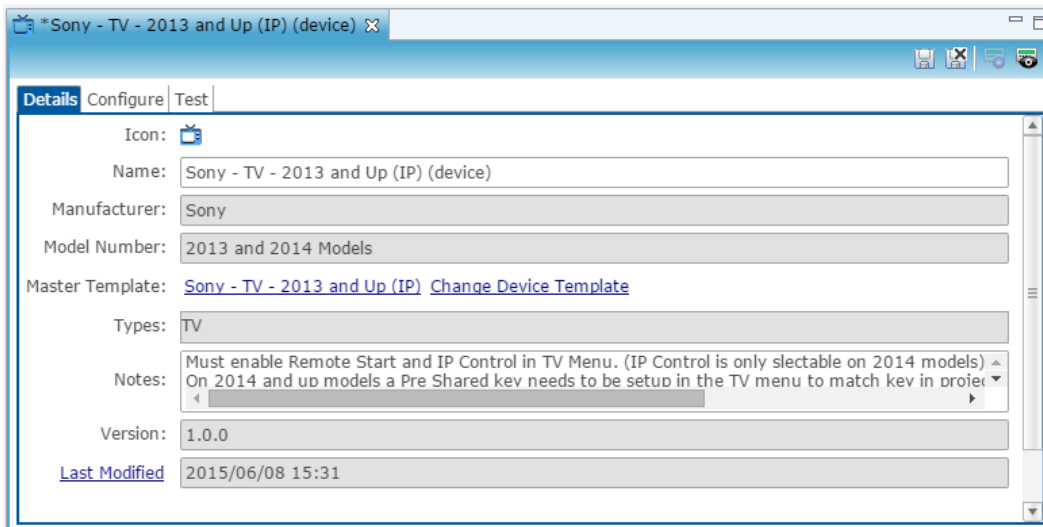
1. Open your Fusion project.
2. Click the **Devices** tab, and then click the **New Device** button .

The Select Template dialog displays.

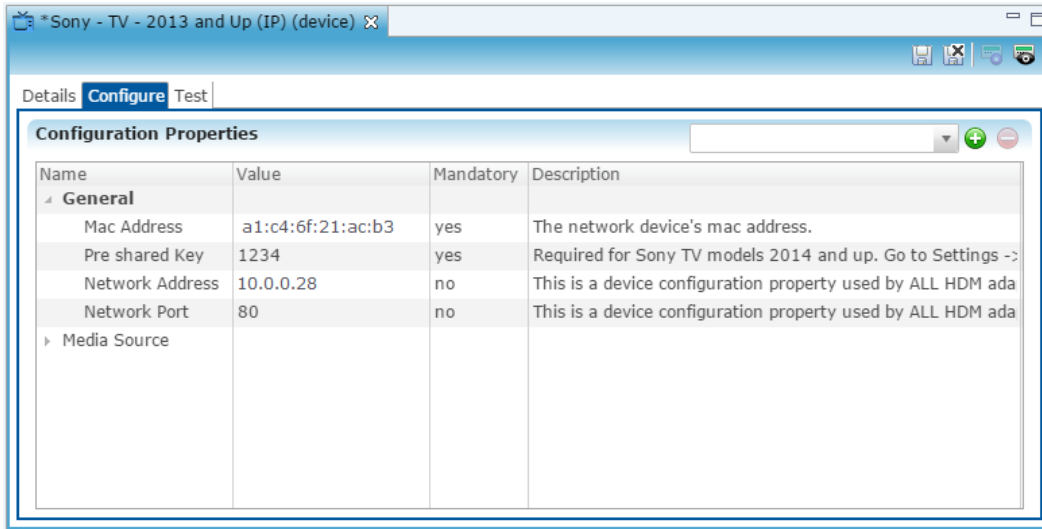


3. Browse to Sony - TV - 2013 and Up (IP).
Entertainment IP Devices > TV > Sony - TV - 2013 and Up (IP)
4. Click **OK**.

The device **Details** tab displays. If desired, enter a name and notes for the device.



- Click the **Configure** tab, and then enter the MAC Address, Pre Shared Key (if applicable), the Network Address, and verify that the Network Port is set to 80.

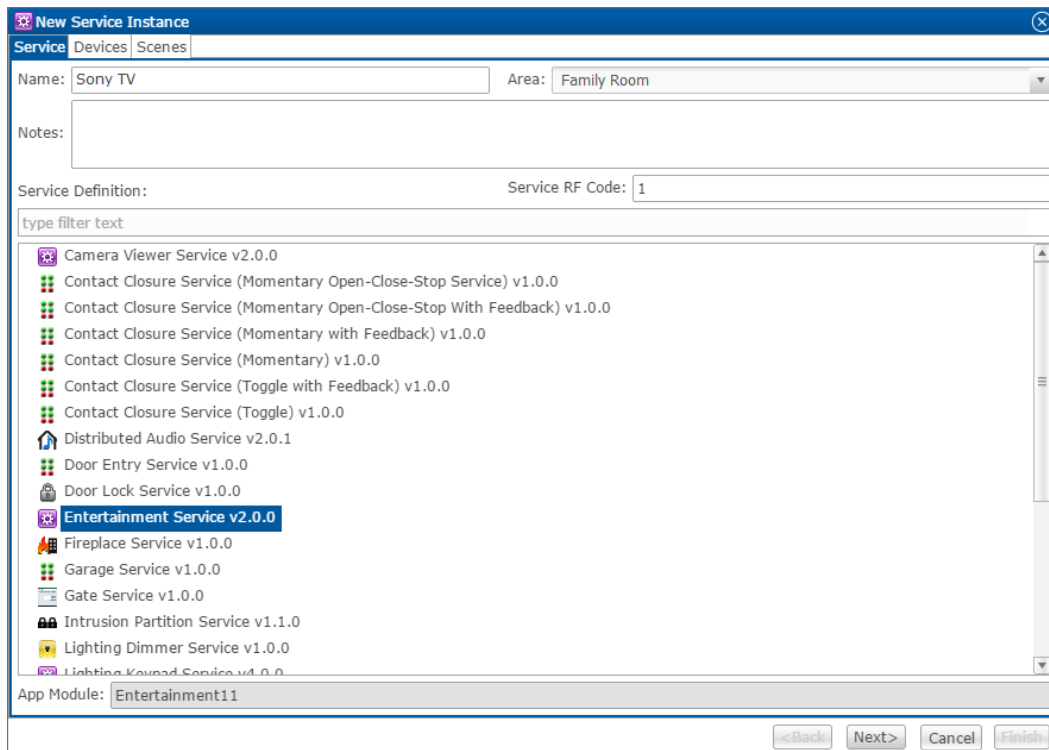


- Click the **Save** button .

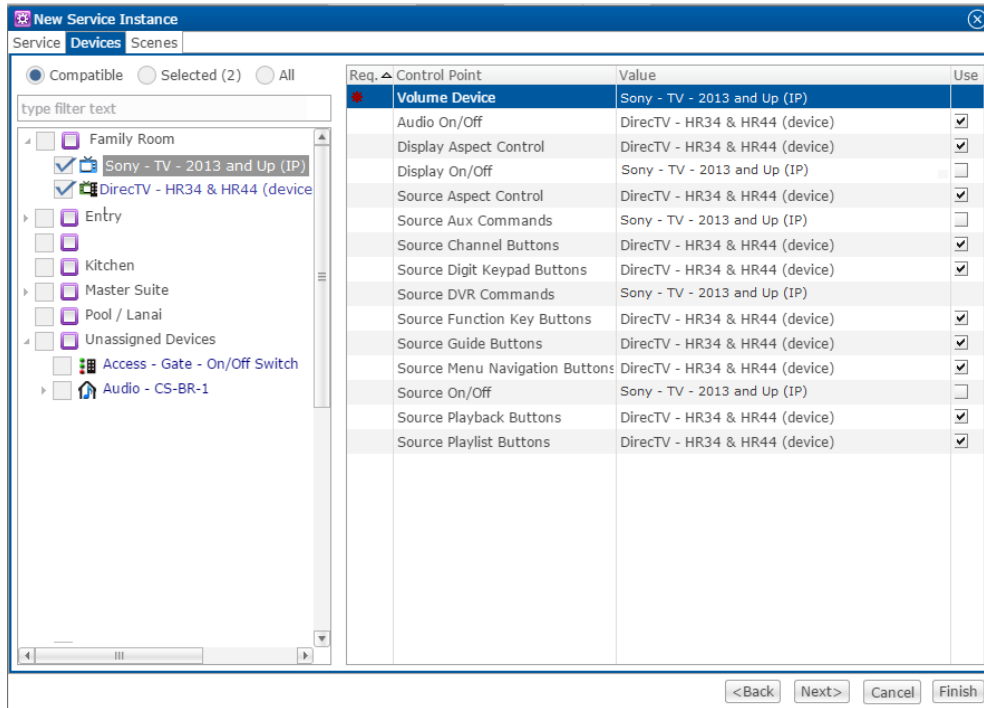
To create a service for the Sony TV IP Driver:

- Click the **Services** tab, and then click the **New Service Instance** button .

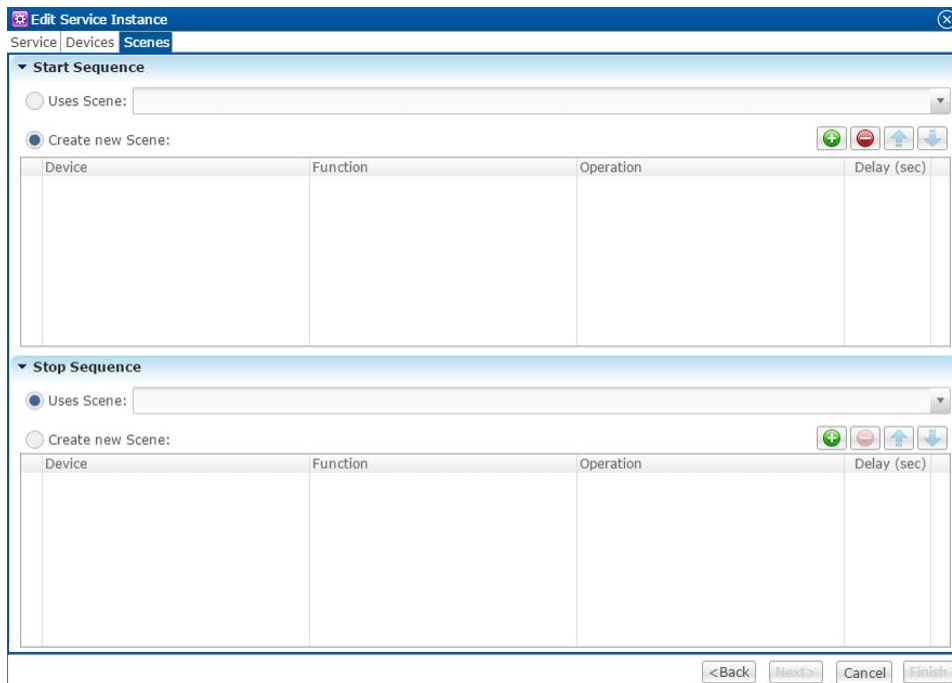
The New Service Instance dialog displays.



2. Enter the name of the service in the **Name** field, select the area, and then click **Entertainment Service**.
3. Click **Next** to display the **Devices** tab.

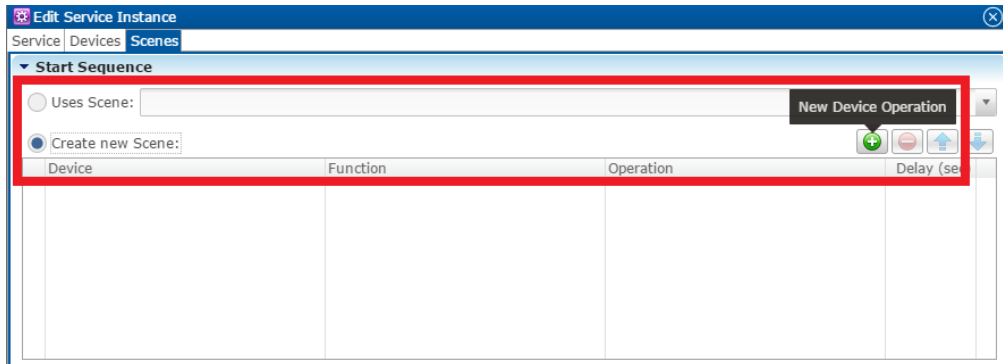


4. In the left panel, select the devices you want to use in the service.
5. In the right panel, set the values for each control point.
Click the **Value** field to view the drop-down menu and select a device.
6. Click **Next** to display the **Scenes** tab.

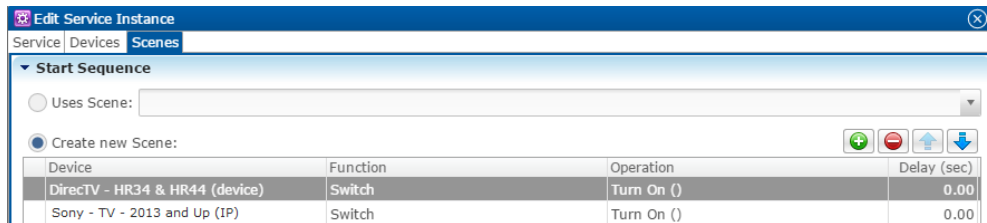



To configure the scene:

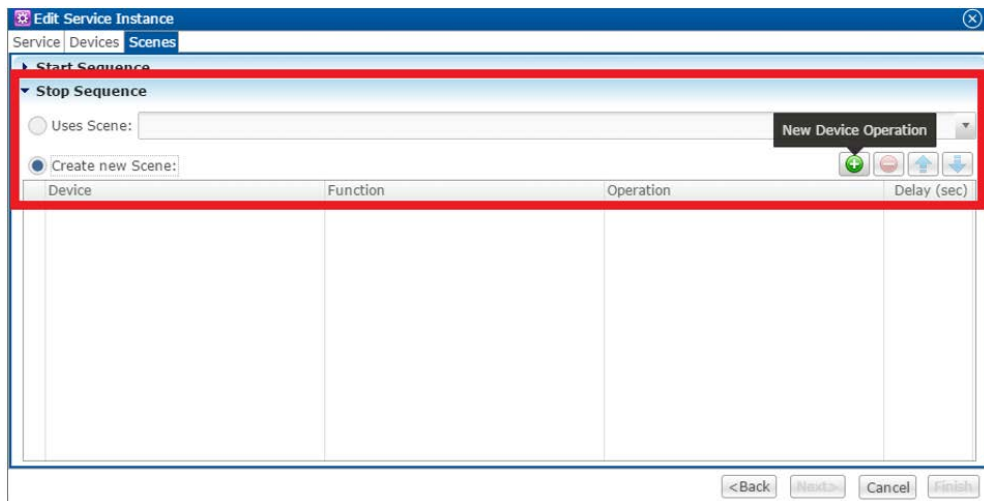
1. In the **Start Sequence** field, select **Create new Scene**, and then click the **New Device Operation** button .



2. Configure the **Device**, **Function**, and **Operation** drop-down menus with the following values.
 - **Device:** Sony - TV - 2013 and Up (IP)
 - **Function:** Switch (or other desired action)
 - **Operation:** Turn On

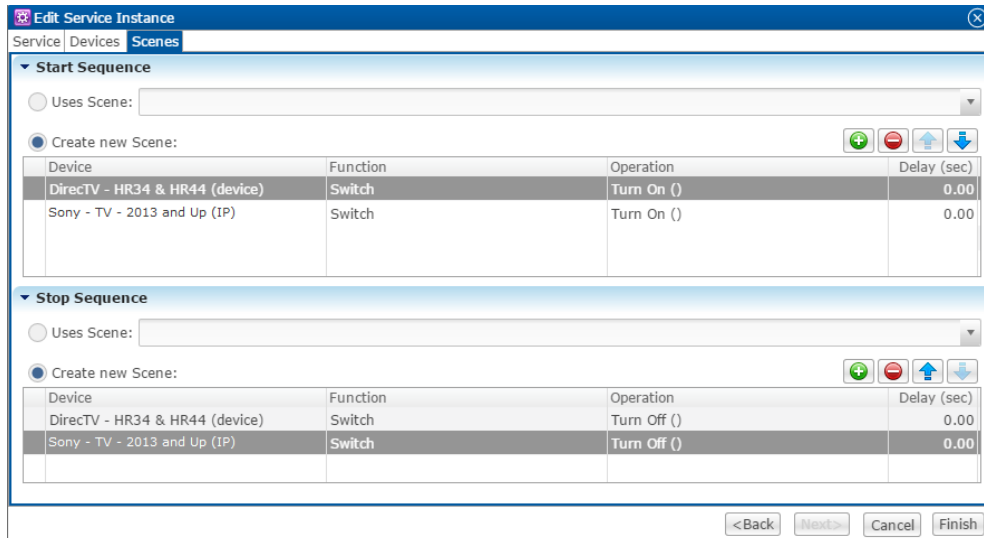


3. Repeat steps 1 and 2 for each device being used in the scene.
4. Go to the **Stop Sequence** field, select **Create new Scene**, and then click the **New Device Operation** button .



5. Configure the **Device**, **Function**, and **Operation** drop-down menus with the following values.

- **Device:** Sony - TV - 2013 and Up (IP)
- **Function:** Switch
- **Operation:** Turn Off



6. Repeat steps 4 and 5 for the other devices that you are using.

7. Click **Finish**.

8. Deploy the project.

Contact information

Clare Controls, Inc.
7519 Pennsylvania Ave, Suite 104
Sarasota, FL 34243
Support: 941.404.1072
Fax: 941.870.9646
claresupport@clarecontrols.com
www.clarecontrols.com