



# Interlogix Concord 4 Integration Release Notes

## Content

Introduction...	1
Installation...	2
Configuring in Fusion...	4
Configuring rules with the Interlogix Concord 4...	8
User interface example...	10
Contact information...	10

**Last modified:** 07/17/18

## Introduction

The Interlogix Concord 4 control panels are residential security and alarm systems that are tested and certified for integration with ClareHome.

The instructions in this document are provided to help you quickly integrate the Interlogix Concord 4 and automation module into the ClareHome system. It is not intended to be a complete installation guide.

**Note:** To incorporate the Interlogix Concord 4 in your Clare Controls system, you must use the GE Interlogix ITI SuperBus 2000 RS-232 Automation Module. The module allows third-party integration with the Concord 4 security panel.

## Concord 4 supported properties in ClareHome

The following Interlogix Concord 4 features are supported in ClareHome.

- **Arm and disarm:** Arm and disarm are options in the user interface. Swipe the screen to arm or disarm the system.
- **Armed stay:** The panel arms in stay mode, turning off the home's internal motion detectors
- **Armed away:** The panel arms in away mode, activating the entire security system (internal and external).
- **Zone status:** The user is able to see the status of all zones in the system.
- **Zone bypass:** Zone bypassing is only available when the panel is armed.

## Installation

A qualified technician should install the Interlogix Concord 4 security panel. Refer to the installation instructions that came with your device. Clare Controls does not assume any responsibility for damages caused by improper installation or connection to the network.

You must connect the SuperBus Automation Module to the Concord 4 before it can be connected or configured in the network. Follow the instructions that came with the automation module for installation.

### Notes

- The Concord 4 must be powered off when then the automation module is connected, power on the Concord after connection is complete.
- The automation module must be connected with a straight through cable. When using the panel with a CLIQ.host, you must use the included cable and a null modem adapter. When using the panel with a CLIQ.mini, you must use a USB to serial cable (part number CLIQ-SEC-USB-01)

### To connect the Concord 4 to the CLIQ.host:

**Note:** The Concord 4 requires a straight through serial connection. The serial cables provided with the CLIQ are Null cables.

1. Connect the RJ12 end of the provided cable into a serial port on your CLIQ.host.

**Note:** Write down or note the port used, this is required for Fusion configuration.

2. Connect the DB-9 end of the serial cable to a DB-9 Null adapter.
3. Connect the DB-9 Null adapter to the Superbus 2000 Automation module.

### To connect the Concord 4 to the CLIQ.mini:

**Note:** You will need the Clare Controls USB to serial cable (part number CLIQ-SEC-USB-01).

1. Attach the USB end of the USB to serial cable to the desired USB port on the CLIQ.mini.
2. Attach the opposite end of the USB to serial cable (DB-9 connector) to the serial connector on the DSC panel.

**To connect the Concord 4 Security System to the ClareHome controller using a third-party serial interface (such as a Global Caché IP to Serial adapter):**

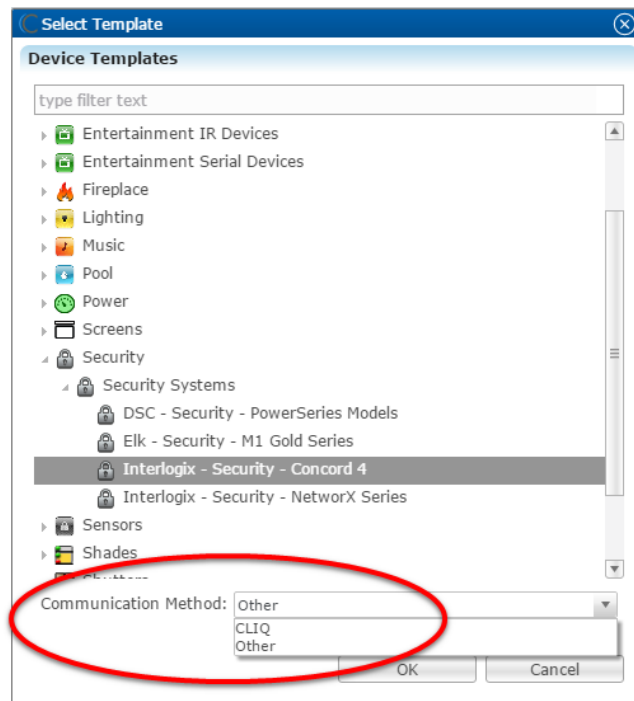
1. Connect the IP to serial device to the local area network (the same network to which the ClareHome controller is connected.)
2. Configure the IP configuration for a static IP address on the local area network.
3. Connect a straight-through serial cable between the Concord 4 and the preferred serial port on the IP to serial adapter.
4. Configure the RS-232 serial connection with the port parameter settings in Table 1, see below.

**Table 1: Serial adapter settings**

Serial Parameter	Setting
Baud Rate	9600
Data Bits	8
Parity	Odd
Stop Bits	1

**Note:** When using a Global Caché and adding the device in Fusion, select Other from the Communication Method drop-down in the Select Template dialog. See Figure 1.

**Figure 1: Communication Method set to Other**




5. After connecting the security system to the ClareHome System, configure the device in Fusion.

## Configuring in Fusion

After installation and connection of the Concord 4, add the device in Fusion. Follow the steps below to configure your security system in Fusion.

**Note:** The Interlogix Concord 4 supports one partition with up to 256 zones.

### To add the Concord 4 panel in Fusion:

1. Click the **Devices** tab, and then click the **New Device** button  to display the Select Template dialog.



2. Browse to **Interlogix Concord 4 (Serial)**.

**Security > Security Systems > Interlogix Concord 4 (Serial)**

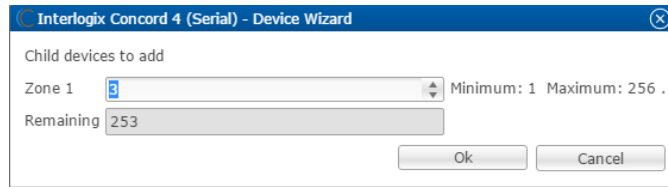
3. Set the **Communication Method** field to CLIQ when using the CLIQ.host or CLIQ.mini.

– or –

Select **Other** if you are using an IP to Serial adapter.

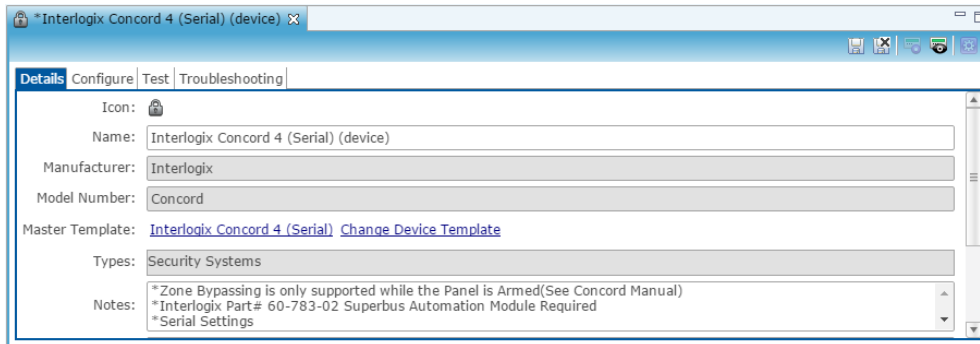
- Click **OK**.

The Interlogix Concord 4 (Serial) – Device Wizard displays.



- Enter the number of desired security zones, and then click **OK**.

The **Details** tab displays.



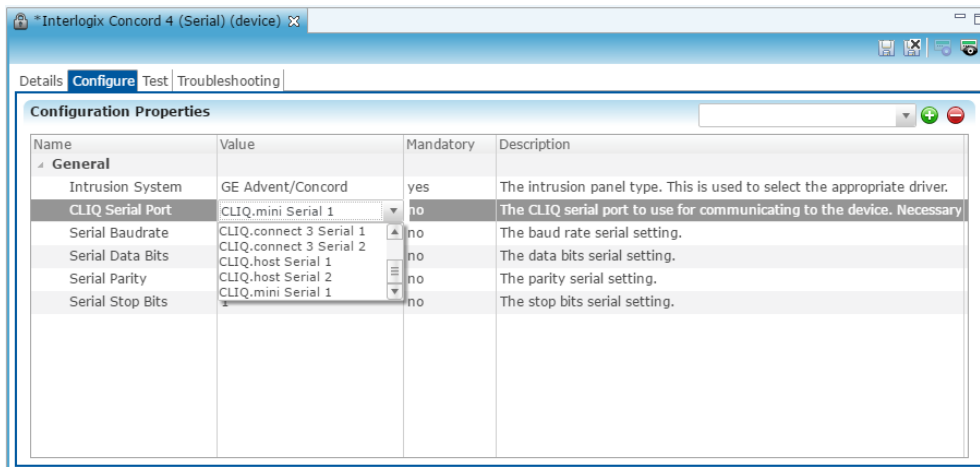
- Enter a name and notes for the device, and then click the **Configure** tab.
- Configure the fields with the proper information, leaving the baudrate, data bits, and serial parity to their default.

**Note:** Ensure that you select the proper value for the CLIQ Serial Port drop-down. CLIQ.host and CLIQ.mini each have port options.

– or –

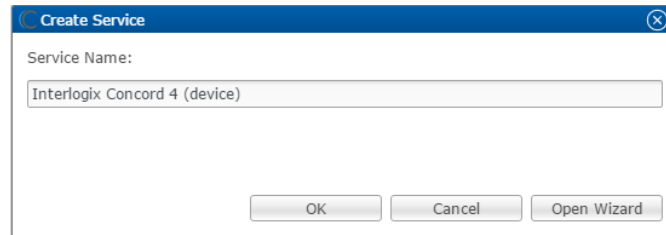
If you chose CLIQ as the communication method in step 3, select the CLIQ Serial Port used with the serial cable in the Value drop-down menu.

Fill in the **Serial Baudrate**, **Serial Data Bits**, **Serial Parity**, and the **Serial Stop Bits** fields to match the serial port settings in Table 1.



- Click the **Save** button .

**Note:** The service is automatically created.



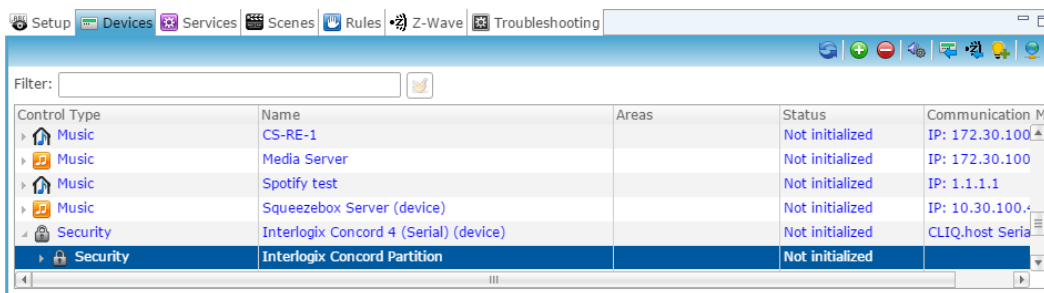
- Click **OK**.

– or –

Click **Open Wizard** to customize the service.

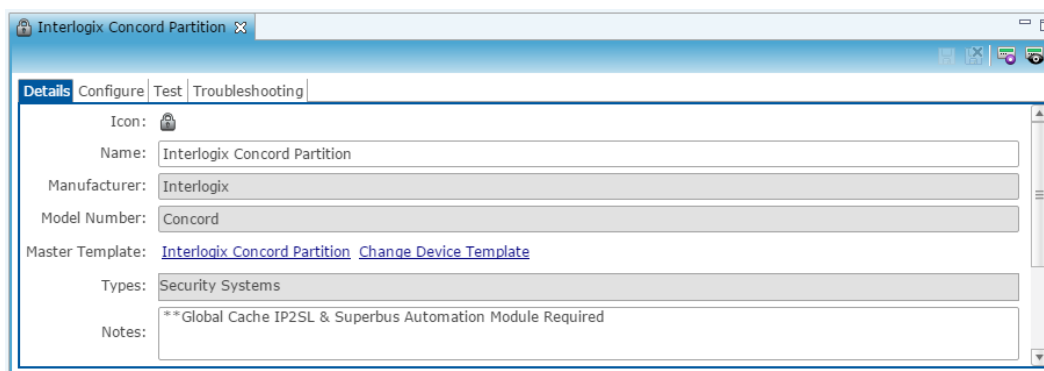
### To configure the security partition:

- Return to the **Devices** tab, and then expand the Concord 4 security device to view the partition.

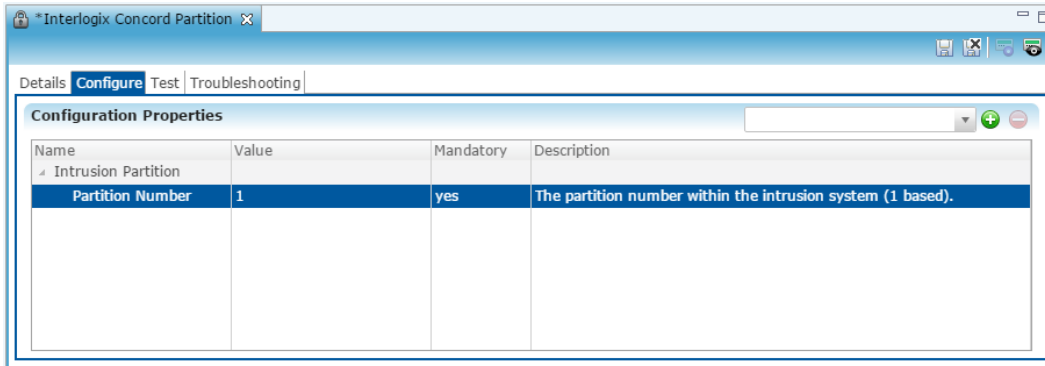



- Double click the partition to configure it.

The **Details** tab displays.



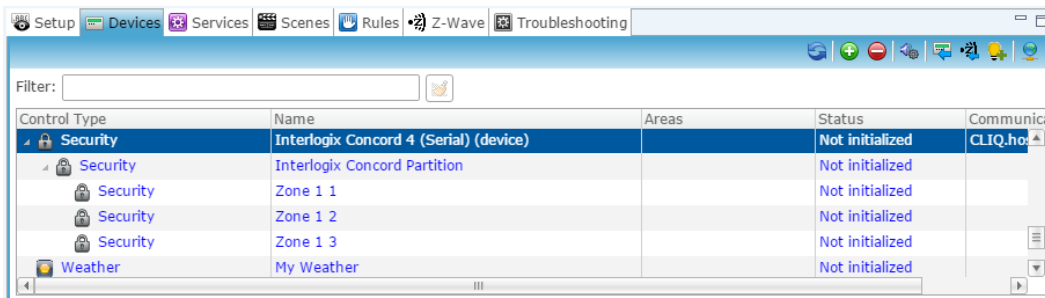
3. Enter a name and notes for the partition, and then click the **Configure** tab.



4. Expand the Intrusion Partition, and then enter the partition number.
5. Click the **Save** button , and return to the **Devices** tab.

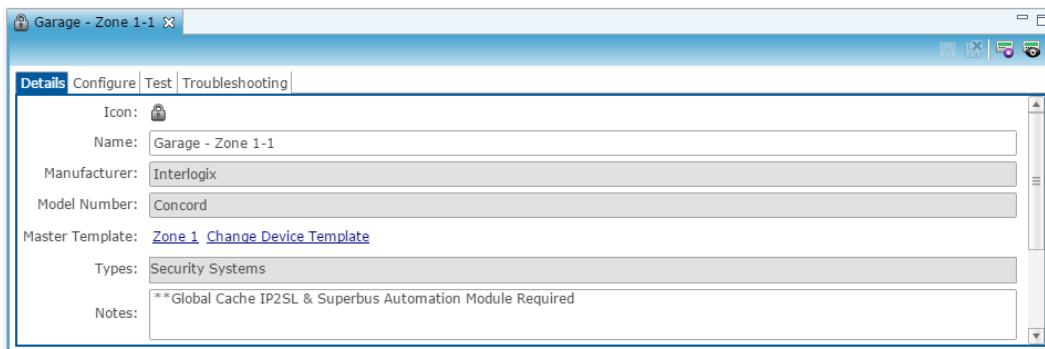
**To configure the security Zones:**

1. Return to the **Devices** tab, and then expand the Concord 4 security device to view the zones.



2. Double click the first zone to configure it.

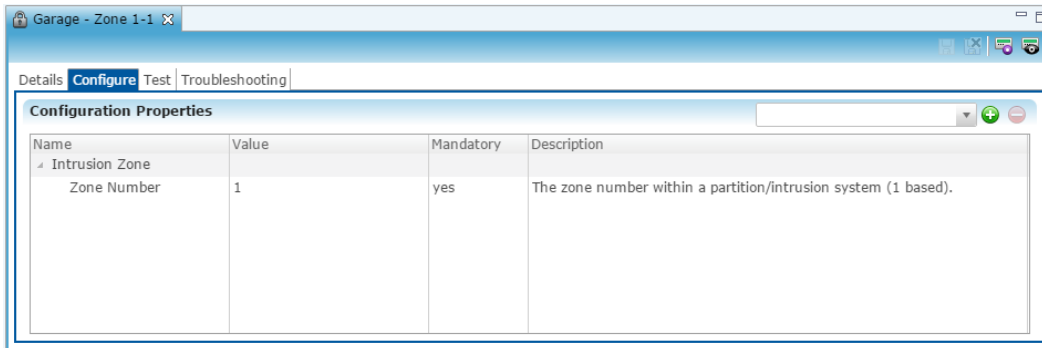
The **Details** tab displays.



3. Enter a name and notes for the zone.  
**Note:** We recommend naming the zone after its' location.
4. Click the **Configure** tab, and then expand the Intrusion Zone.

5. Enter the zone number in the **Zone Number Value** field.

**Note:** The zone defaults to 1, it must be changed to match its corresponding zone.



6. Repeat steps 1 through 5 for each zone.

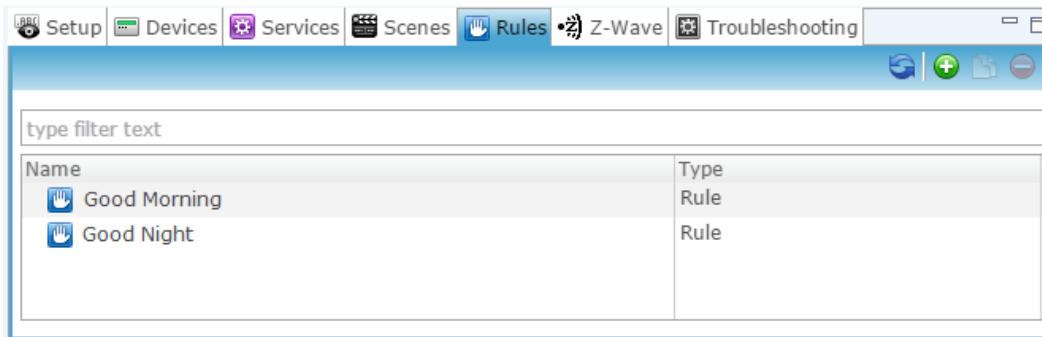
## Configuring rules with the Interlogix Concord 4


Configure a rule for the Interlogix Concord 4.

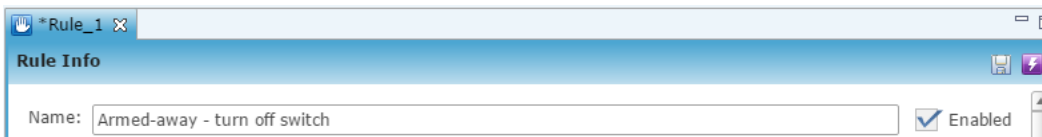
The following example sets an Armed-away rule. When the Concord is set to Arm-Away, the lighting switch turns off.

**To create an Armed-away mode rule in Fusion:**

1. Access your project, and then click the **Rules** tab.



2. Click the **New Rule** button .
3. Enter a name for the rule, and then select the Enable Rule checkbox.





4. Configure the Event Part as below.
  - **Event Type:** Device Property Value Event
  - **Device:** Interlogix Concord 4 device
  - **Function:** Intrusion Partition
  - **Property:** Arm Away
  - **Constraint:** =
  - **Value:** ArmedAway

**Event Part**

Event Type: Device Property Value Event

Device: [- GE Concord Concord Interlogix Concord 4 \(device\)](#)

Function: Intrusion Partition

Property: Arm Away

Constraint: =

Value: ArmedAway

5. Configure the Action part as below.
  - **Action Type:** Invoke Device Operation
  - **Device:** Lighting switch
  - **Function:** Switch
  - **Operation:** Turn Off


**Action Part**

Action Type: Invoke Device Operation

Device: [Living Room - Clare Controls CL-MNS Sys 2 Switch](#)

Function: Switch

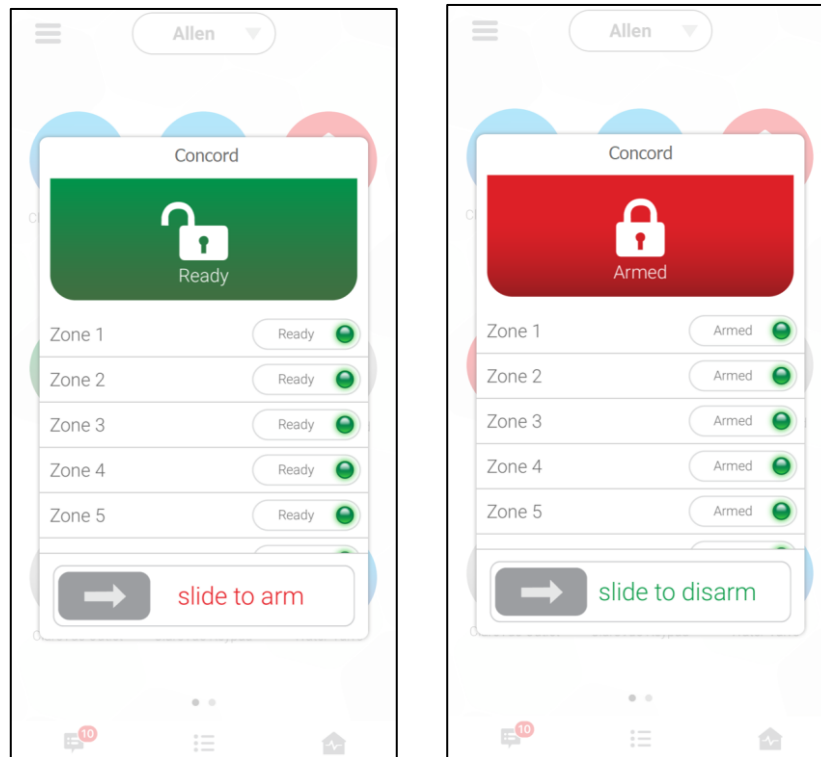
Operation: Turn Off ()

6. Click **Save** , and then deploy the project.

## User interface example

The following figures show the Interlogix Concord 4 in the ClareHome app.

**Figure 2: Interlogix Concord 4 UI in the Ready and Armed state**



## Contact information

Clare Controls, LLC.  
7519 Pennsylvania Ave, Suite 104  
Sarasota, FL 34243

General: 941.328.3991  
Fax: 941.870.9646  
[www.clarecontrols.com](http://www.clarecontrols.com)

Integrator/Dealer Support: 941.404.1072  
[claresupport@clarecontrols.com](mailto:claresupport@clarecontrols.com)

Homeowner Support (ClareCare): 941.315.2273 (CARE)  
[help@clarecontrols.com](mailto:help@clarecontrols.com)