



# Dome Z-Wave Devices Integration Release Notes

## Content

Preface...1
Introduction...1
Installing the device...3
Pairing and configuring Dome devices in the apps...3
Pairing and configuring the Dome device in Fusion...5
Contact information...9

**Last modified:** 10/23/18

## Preface

For information on Z-Wave and ClareHome, see [Installing Z-Wave with ClareHome](#).

### Notes

- When installing Z-Wave devices, ensure that there is nothing inhibiting their signal. Z-Wave relies on radio signals. Metal or thick walls may limit their signal strength.
- We recommend having 2 or more repeating Z-Wave devices.

## Introduction

Dome Z-Wave devices integrate with ClareHome via the Z-Wave network. Installers only need to pair (add) the device to the ClareHome project.

By integrating the Dome devices into the ClareHome project, your customers can control them from their Android or iOS smartphones and tablets.

## Dome supported models:

The following Dome models are supported in ClareHome, additional models may be compatible but have not been tested.

- Leak Sensor - DMWS1
- Motion Detector - DMMS1
- Door & Window Sensor Pro - DMDP1
- On/Off Plug - DMOF1
- Window/Door Sensor - DMWD1

## Dome device properties

Each Dome device has different supported properties. See the table below for supported options.

**Note:** The device functions listed are the only functions of that device supported in ClareHome.

Figure 1: Dome device properties

Device description	Function
<b>Leak Sensor – DMWS</b>	
The leak sensor is a water detection device. This device is compatible with ClareHome notifications and automations.	Water detection
<b>Motion Detector – DMMS1</b>	
The motion detector is compatible with ClareHome notifications and automations and only supports motion detection.	Motion detection
<b>Door &amp; Window Sensor Pro – DMDP1</b>	
The door and window sensor is only supported in ClareHome as a contact closure device. This device is compatible with ClareHome notifications and automations	Contact closure (open/closed)
<b>On/Off Plug – DMOF1</b>	
The plug is a controllable outlet accessory that ClareHome only supports as an on/off control device. This device is compatible with ClareHome notifications and automations	Power control (on/off)
<b>Window/Door Sensor – DMWD1</b>	
The door and window sensor is a contact closure device. This device is compatible with ClareHome notifications and automations	Contact closure (open/closed)

## Installing the device

Only qualified installation technicians should install Dome devices. Follow the installation and programming instructions that came with your Dome devices.

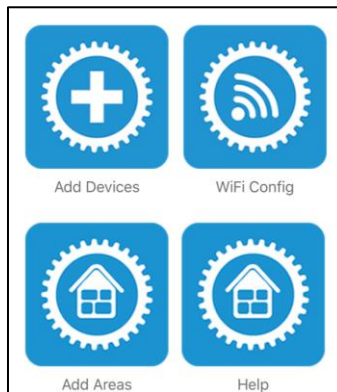
## Pairing and configuring Dome devices in the apps

After installing the device, pair it.

To pair the Dome device using ClareHome or Install Assist:

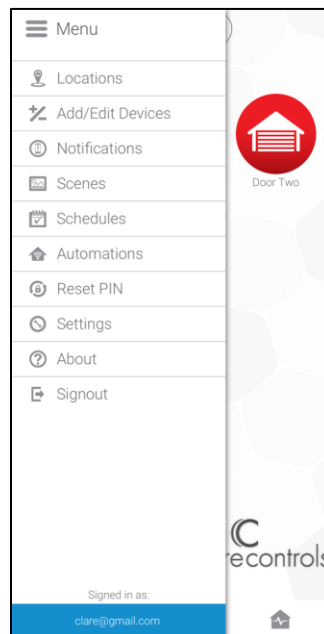
### Notes


- The pairing process is the same for each Dome device.
  - The example below uses a Dome Door & Window Sensor.
1. Access the Clare Controls Install Assist app, and then tap **Add Devices**.

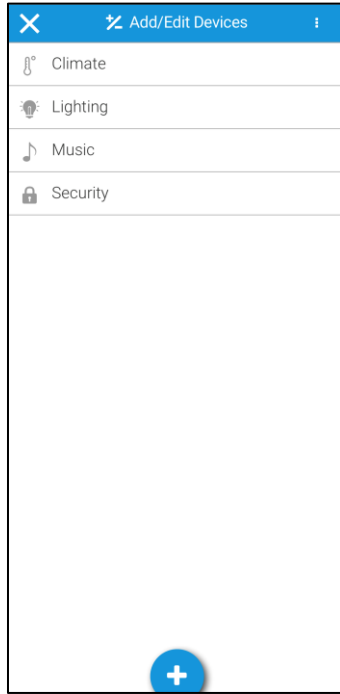


– or –

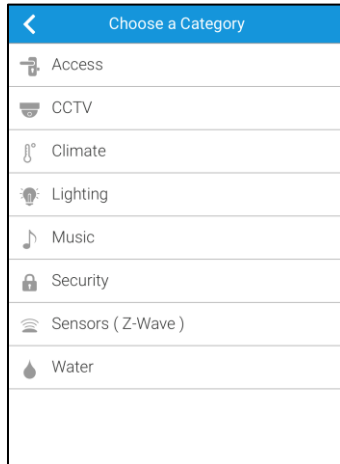
Access the ClareHome Menu ☰, and then tap **Add/Edit Devices**.



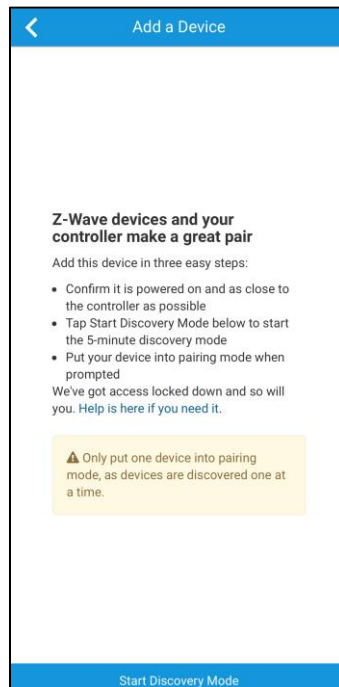
2. At the bottom of the screen, tap the plus icon .



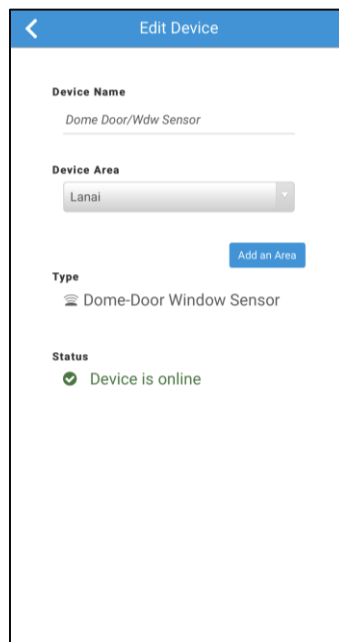
3. Tap **Sensors (Z-Wave)**.



4. Tap **Start Discovery Mode**, and then pair the device as per the manufacturer's instructions.



5. Enter a name for the sensor, and then select an area.




6. Tap outside of the area drop-down and the device automatically saves.

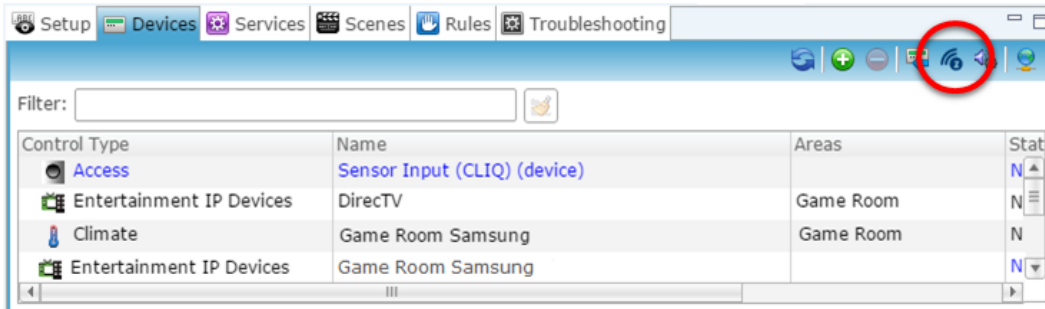
**Note:** Sensors are not controllable and do not appear as devices that can be added to a user's ClareHome space. The sensors are used in notification and automations only. For notification and automation configuration, see [ClareHome App Guide \(DOC ID 1750\)](#).

## Pairing and configuring the Dome device in Fusion

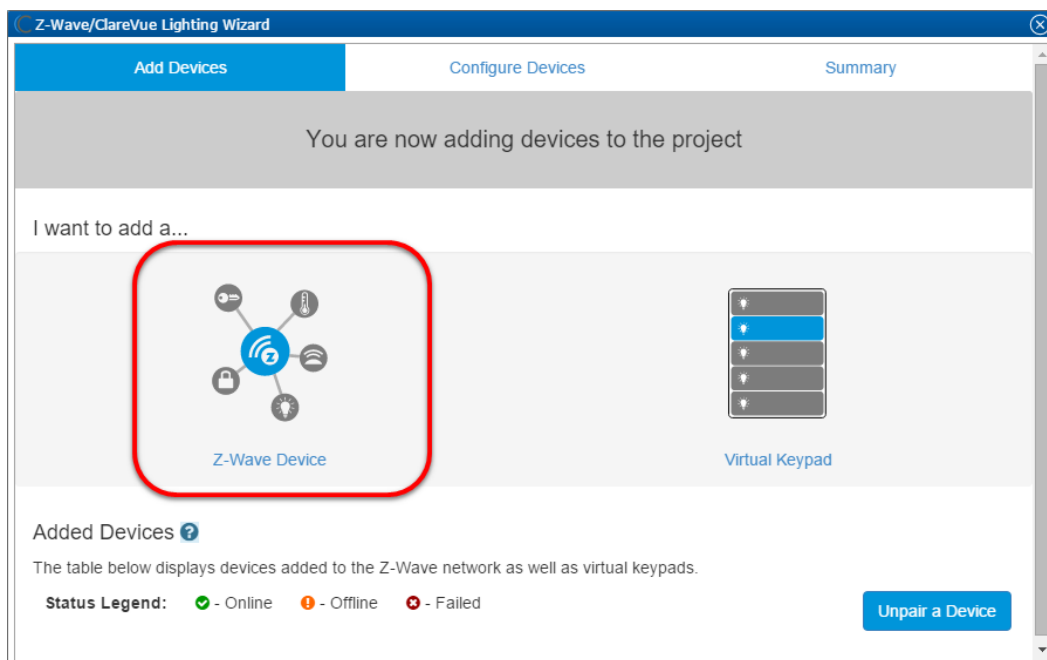
Dome Z-Wave devices do not need any device programming. Pair the device to the ClareHome Z-Wave controller before adding it to your Fusion project.

To pair the device with Fusion:

1. Access your project, and then click the **Z-Wave Wizard** icon .



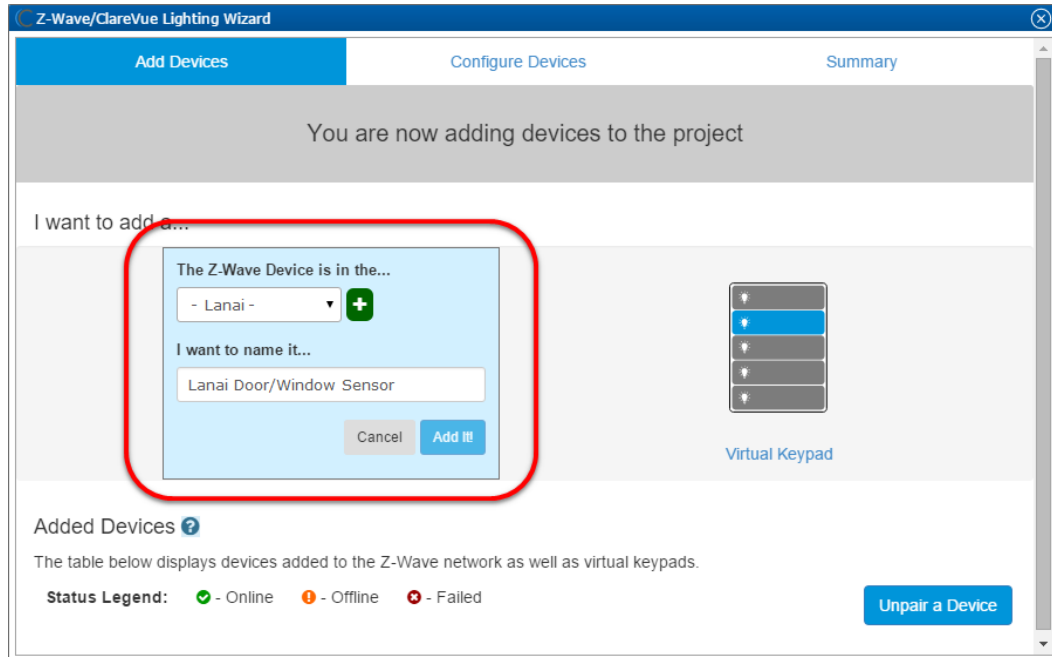
2. Click on **Z-Wave Devices**.



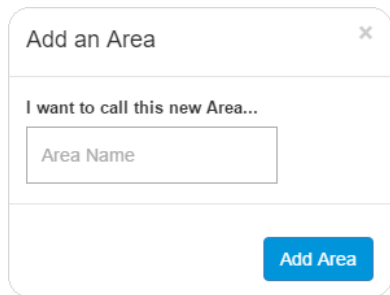
3. Select the device's location, and then enter a name for the device.

### Notes

- We recommend naming the device after its location to avoid confusion. For example, Lanai Door/Window Sensor.

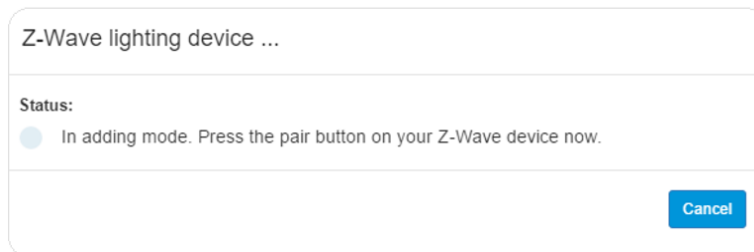


- If you want to add an area, click the green plus icon , enter a name for the area, and then click **Add Area**.



4. Click **Add It!**.

A Z-Wave adding mode dialog displays.



5. Pair the device per the manufacturer's instructions.

### Notes

- Once paired, the on screen pairing indicator stops blinking.
- The Z-Wave lighting device dialog goes away when the device has been paired.

6. The sensor appears in in the added devices list.

**Added Devices** [?](#)

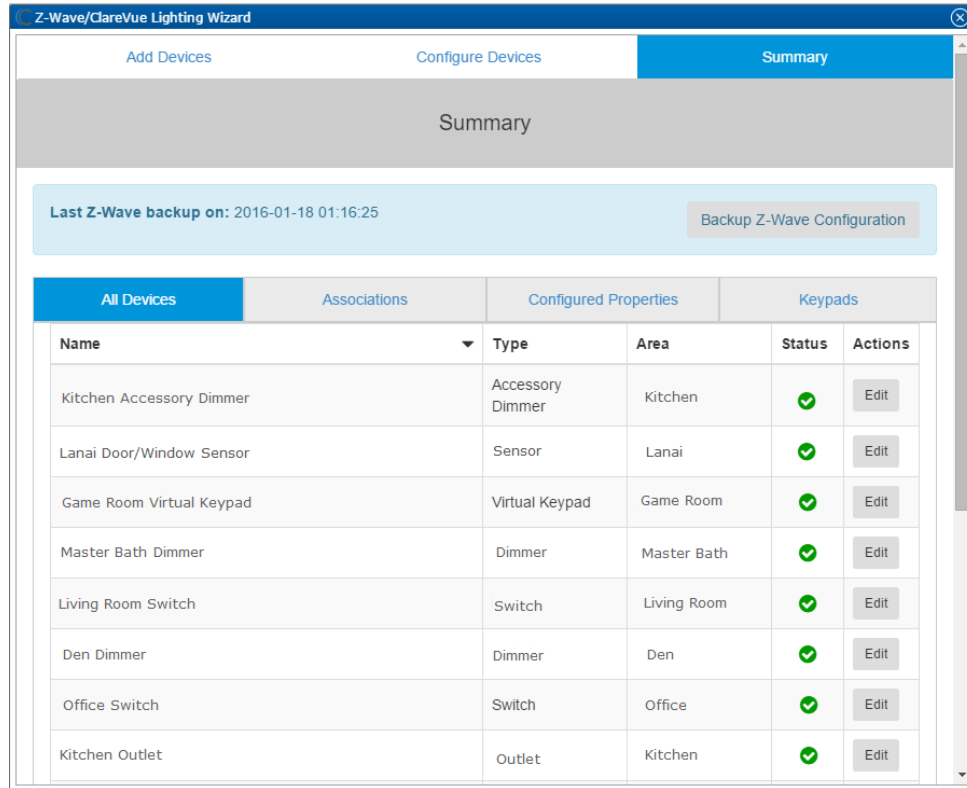
The table below displays devices added to the Z-Wave network as well as virtual keypads.

**Status Legend:** ✔ - Online ! - Offline ✘ - Failed

Name	Type	Area	Node ID	Device Status	Actions
Kitchen Dimmer	Dimmer	- Kitchen -	7	✔	Delete
Lanai Door/Window Sensor	Sensor	- Lanai -	5	✔	Delete



7. Click the **Summary** tab.



8. Click the **Close Window** icon  in the top-right of the wizard to exit and return to the **Devices** tab.

**Note:** The Z-Wave devices added with the Z-Wave Wizard are automatically imported on the **Devices** tab.

## Contact information

Clare Controls, LLC.  
7519 Pennsylvania Ave, Suite 104  
Sarasota, FL 34243

General: 941.328.3991  
Fax: 941.870.9646  
www.clarecontrols.com

Integrator/Dealer Support: 941.404.1072  
claresupport@clarecontrols.com

Homeowner Support (ClareCare): 941.315.2273 (CARE)  
help@clarecontrols.com