



GE Z-Wave Plus Lighting Devices Integration Release Notes

Content

Preface...1
Introduction...1
Installing the lighting device...3
Pairing and configuring the devices in the apps...4
Pairing the lighting device in Fusion...10
Using the switch or dimmer in the ClareHome app...14
Using the fan control in the ClareHome app...15
Contact information...15

Last modified: 01/29/20

Preface

For information on Z-Wave and ClareHome, see [Installing Z-Wave with ClareHome](#).

Notes

- When installing Z-Wave devices, ensure that there is nothing inhibiting their signal. Z-Wave relies on radio signals. Metal or thick walls may limit their signal strength.
- We recommend having 2 or more repeating Z-Wave devices.
- GE lighting devices cannot be associated with ClareVue Lighting devices.

Introduction

The GE Z-Wave Plus lighting devices integrate with ClareHome via the Z-Wave network. Installers only need to pair (add) the switch or dimmer to the ClareHome project.

By integrating the GE switches and dimmers into the ClareHome project, your customers can control the associated lights from their Android or iOS devices.

GE supported models:

The following models are supported, additional models may be compatible but have not been tested.

- 14299 – 1,000W Paddle Dimmer
 - 26931 – In-Wall Smart Motion Switch
 - 26933 – In-Wall Smart Motion Dimmer
 - 14288 – In-Wall Tamper Resistant Outlet
 - 14292 – In-Wall Smart Toggle Switch
 - 14295 – In-Wall Smart Dimmer Toggle Style
 - 14284 – Plug-in Outdoor Smart Switch
 - 14291 – In-Wall Smart Paddle Switch
 - 14294 – In-Wall Smart Paddle Dimmer
 - 28169 – Plug-in Smart Switch with Grounded Outlet
 - 14282 – Plug-in Smart Switch with Dual Outlet
 - 28177 – Plug-in Smart Switch with 2 USB Ports
 - 28167 – Plug-in Smart Dimmer with Polarized Outlet
 - 14280 – Plug-in Smart Dimmer with Dual Outlet
 - 28175 – Plug-in Smart Dimmer with 2 USB Ports
 - 14287 – Z-Wave Smart Fan Control
 - 42203 – Z-Wave Dimmer Paddle
 - 46201 – Z-Wave Switch Paddle
 - 46204 – Z-Wave Dimmer Toggle
 - 46202 – Z-Wave Switch Toggle
 - 46199 – In-Wall Add-On Switch
- Note:** The Add-on Switch is not a Z-Wave device and does not pair into the network.

Note: The device functions listed are the only functions of that lighting device supported in ClareHome. Functions not listed for the device are not supported in ClareHome.

For setting configurations and definitions, see “Pairing and configuring the devices in the apps,” on page 4.

Table 1: GE lighting device properties

Device	Functions
Dimmers	
14299 – 1,000W Paddle Dimmer	Ramp Time Settings
14294 – In-Wall Smart Paddle Dimmer	Button LED Behavior:
28167 – Plug-in Smart Dimmer with Polarized Outlet	
14280 – Plug-in Smart Dimmer with Dual Outlet	
28175 – Plug-in Smart Dimmer with 2 USB Ports	

Switches and outlets	
14291 – In-Wall Smart Paddle Switch	Button LED Behavior
14282 – Plug-in Smart Switch with Dual Outlet	
28177 – Plug-in Smart Switch with 2 USB Ports	
28169 – Plug-in Smart Switch with Grounded Outlet	
14288 – In-Wall Tamper Resistant Outlet	
Motion devices	
26931 – In-Wall Smart Motion Switch	Operation Mode
	Motion Sensing
	Motion Sensitivity
	Light Sensing
	Time Out Duration
	Reset Cycle
26933 – In-Wall Smart Motion Dimmer	Ramp Time Settings
	Motion Sensing
	Motion Sensitivity
	Light Sensing
	Time Out Duration
	Reset Cycle
Toggle, fan, and outdoor devices	
14292 – In-Wall Smart Toggle Switch	No configuration settings.
14284 – Plug-in Outdoor Smart Switch	No configuration settings
14287 – Z-Wave Smart Fan Control	No configuration settings
14295 – In-Wall Smart Dimmer Toggle Dimmer	Ramp Time Settings

Installing the lighting device

Only qualified installation technicians should install GE lighting devices. Follow the installation and programming instructions that came with your GE lighting devices.

Note: The switch and dimmer are only configurable when using the ClareHome and Clare Controls Install Assist apps.

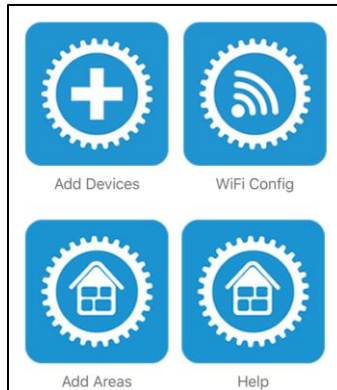
Pairing and configuring the devices in the apps

After installing the lighting device, pair it.

To pair the lighting device using ClareHome or Install Assist:

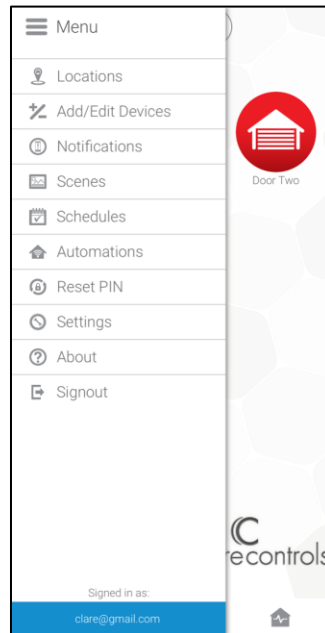
Note: The pairing process is the same for each device.


1. Access the Clare Controls Install Assist app, and then tap **Add Devices**.

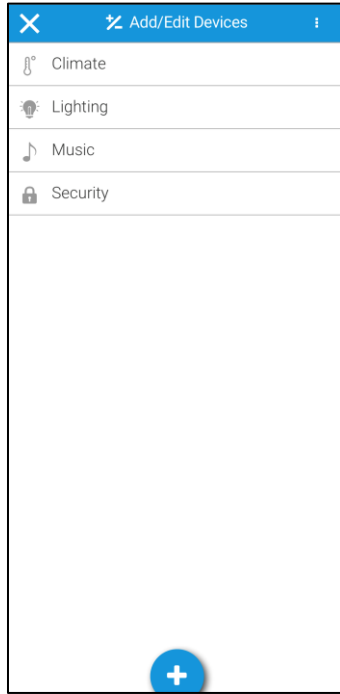


– OR –

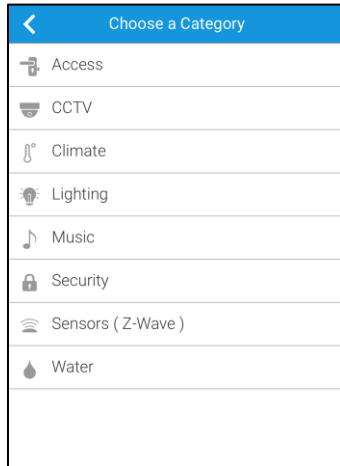
Access the ClareHome Menu ☰, and then tap **Add/Edit Devices**.



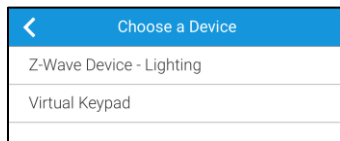
2. At the bottom of the screen, tap the **Plus** icon .



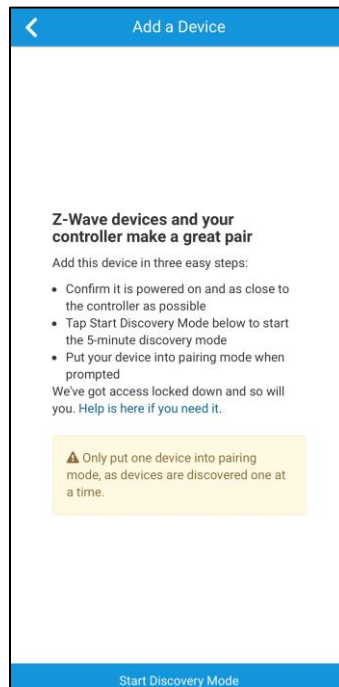
3. Tap **Lighting**.



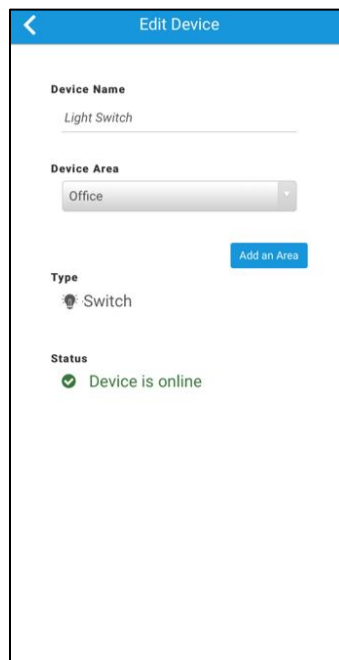
4. Tap **Z-Wave Device - Lighting**.



5. Tap **Start Discovery Mode**, and then pair the device as per the manufacturer's instructions.



6. Enter a name for the device, and then select an area.



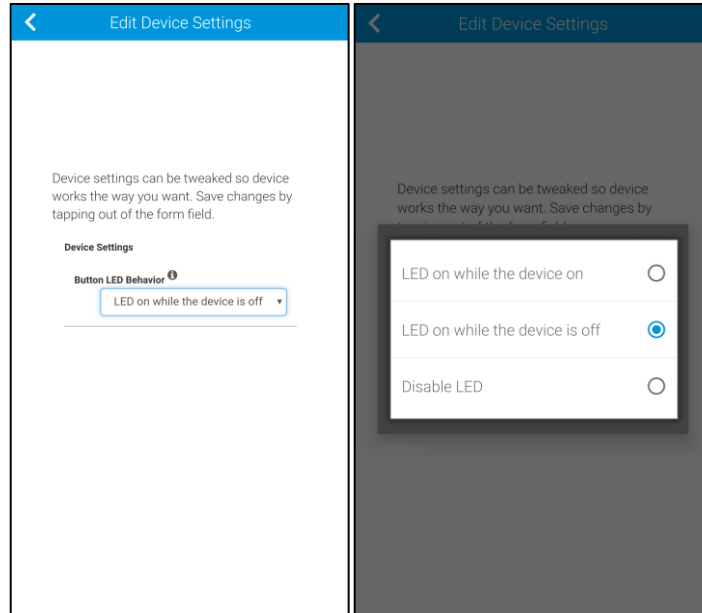
7. Tap outside of the area drop-down and the Z-Wave device is ready to use. Configure the device's settings.

Note: For scene, schedule, notification, and automation configuration, see [ClareHome App Guide \(DOC ID 1750\)](#).

To configure the switch and outlet settings:

1. Tap **Edit Device Settings**.
2. Configure the device settings as desired.

Button LED Behavior: This setting allows the user to adjust the device's physical LED behavior.



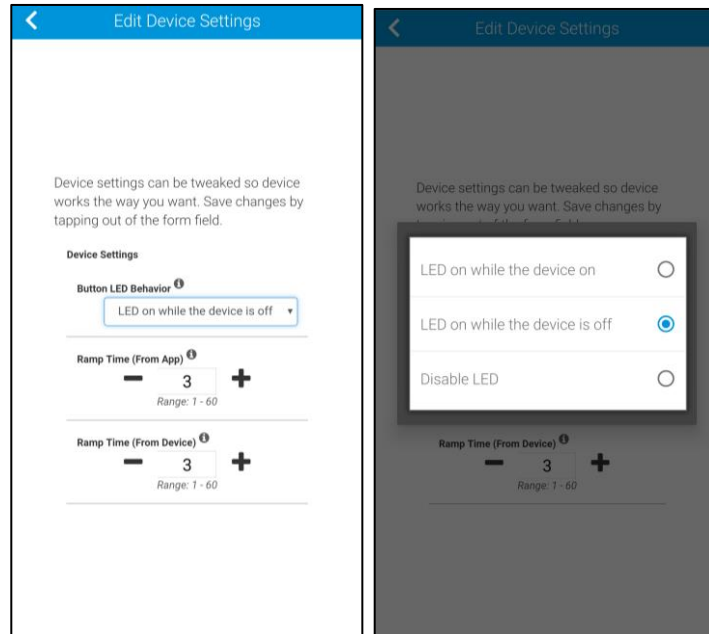
3. Tap outside of the drop-down menu/text field.
The device information automatically saves.

To configure the dimmer settings:

1. Tap **Edit Device Settings**.
2. Configure the device settings as desired.

Button LED Behavior: This setting allows the user to adjust the dimmer's physical LED behavior.

Ramp Time: (Dimmer only) The amount of time, in seconds, that it takes the dimmer to get to the set level. There are 2 ramp time configuration options, from the app and manually from the device.



3. Tap outside of the drop-down menu/text field.
The device information automatically saves.

To configure the motion detection device settings:

1. Tap **Edit Device Settings**.
2. Configure the Device settings as desired

Motion switch only

Operation Mode: The motion mode for the switch.

- **Manual:** Motion detection is disabled; the switch is only manually controlled.
- **Vacancy:** Motion detection is on; the light turns on manually and off automatically when no motion is sensed.
- **Occupancy:** Motion detection is enabled and turns the switch on when motion is detected and off when no motion is detected.

Motion dimmer only

Ramp Time: (Dimmer only) The amount of time, in seconds, that it takes the dimmer to get to the set level.

Both the motion detection switch and dimmer

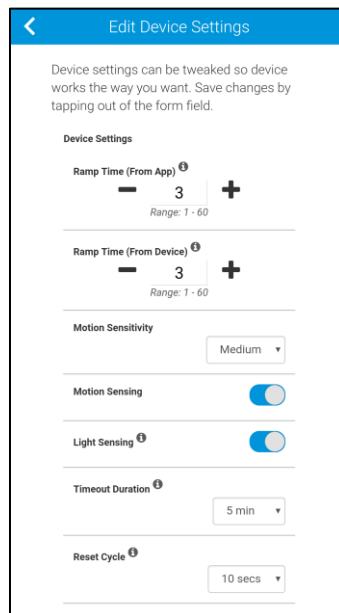
Motion Sensing: The ability to sense motion. This feature can be turned on or off.

Motion Sensitivity: Motion detection sensitivity options (the amount of motion required to turn the light on); low, medium, or high.

Light Sensing: The ability to sense light. When enabled, this feature turns the light on only when the room is dark/unlit. If this feature is disabled, the light is turned on regardless of the light level of the room.

Time Out Duration: This function sets the amount of time that the light remains on after motion stops.

Reset Cycle: This function sets the amount of time in seconds after manually turning off the light and when motion detection is started. For example, when you physically turn off the light, if this is set to 0, any movement immediately turns the light back on.




3. Tap outside of the drop-down menu/text field.

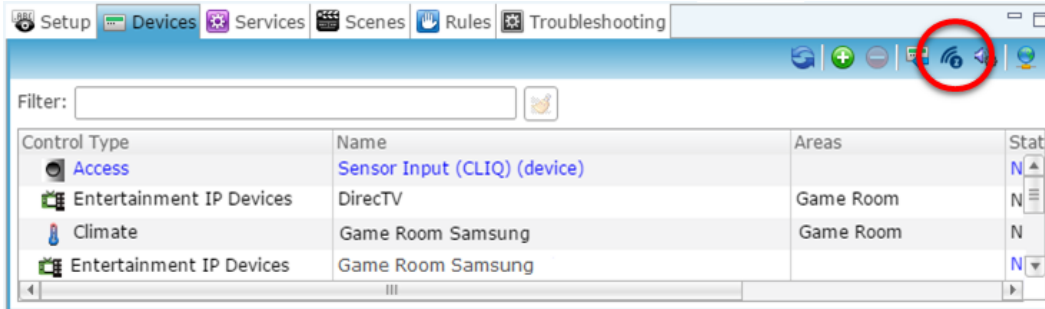
The device information automatically saves.

Pairing the lighting device in Fusion

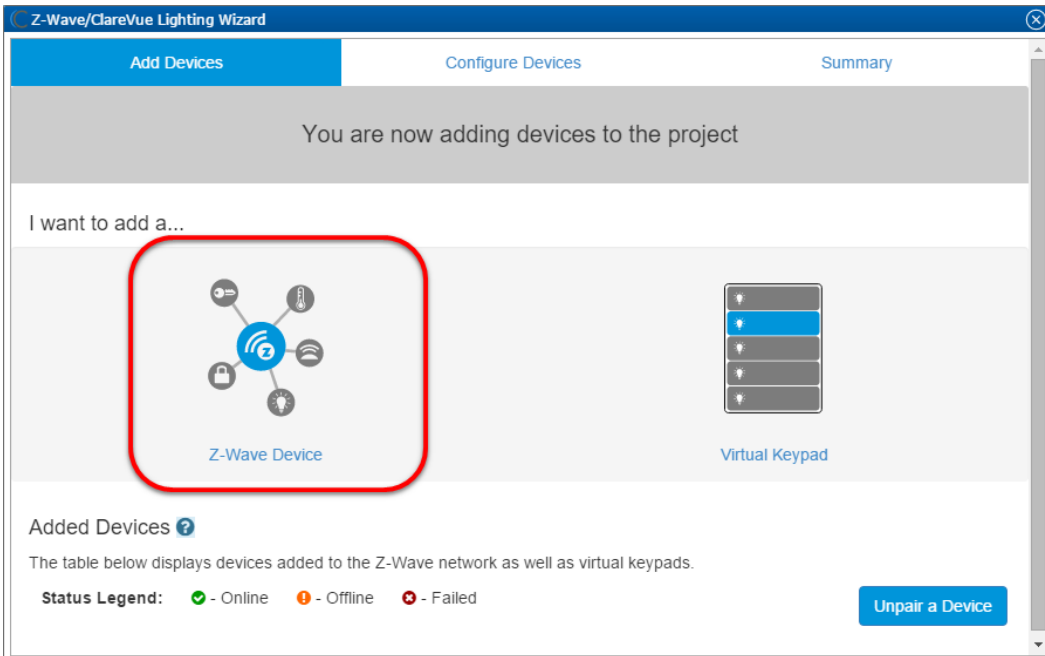
After installing the device, pair it.

To pair the device with Fusion:

1. Access your project, and then click the **Z-Wave Wizard** icon .



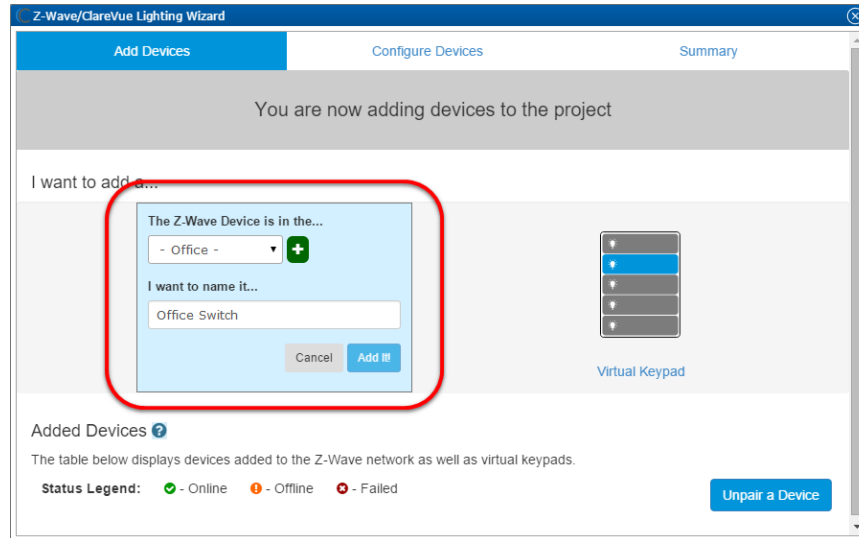
2. Click on **Z-Wave Devices**.



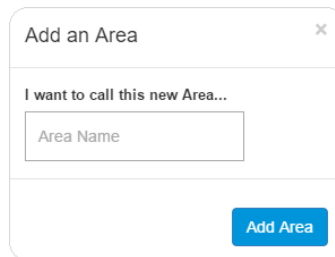
3. Select the device's location, and then enter a name for the device.

Notes

- We recommend naming the device after its location to avoid confusion. For example, Office Switch.

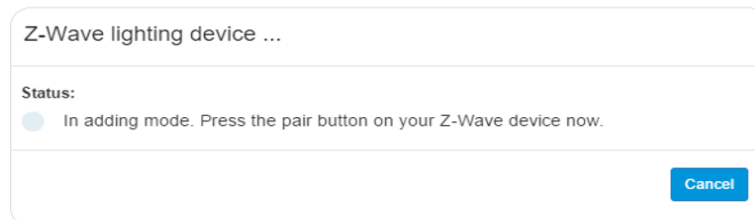


- If you want to add an area, click the green plus icon , enter a name for the area, and then click **Add Area**.



4. Click **Add It!**.

A Z-Wave adding mode dialog displays.



5. Pair the devices per the manufacturer's instructions.

Note: The Z-Wave lighting device dialog goes away when the device has been paired.

6. The switch or dimmer appear in in the added devices list.

Z-Wave/ClareVue Lighting Wizard

Add Devices | Configure Devices | Summary

You are now adding devices to the project

I want to add a...

Z-Wave Device | Virtual Keypad

Added Devices ?

The table below displays devices added to the Z-Wave network as well as virtual keypads.

Status Legend: ✔ - Online ! - Offline ✘ - Failed

Unpair a Device

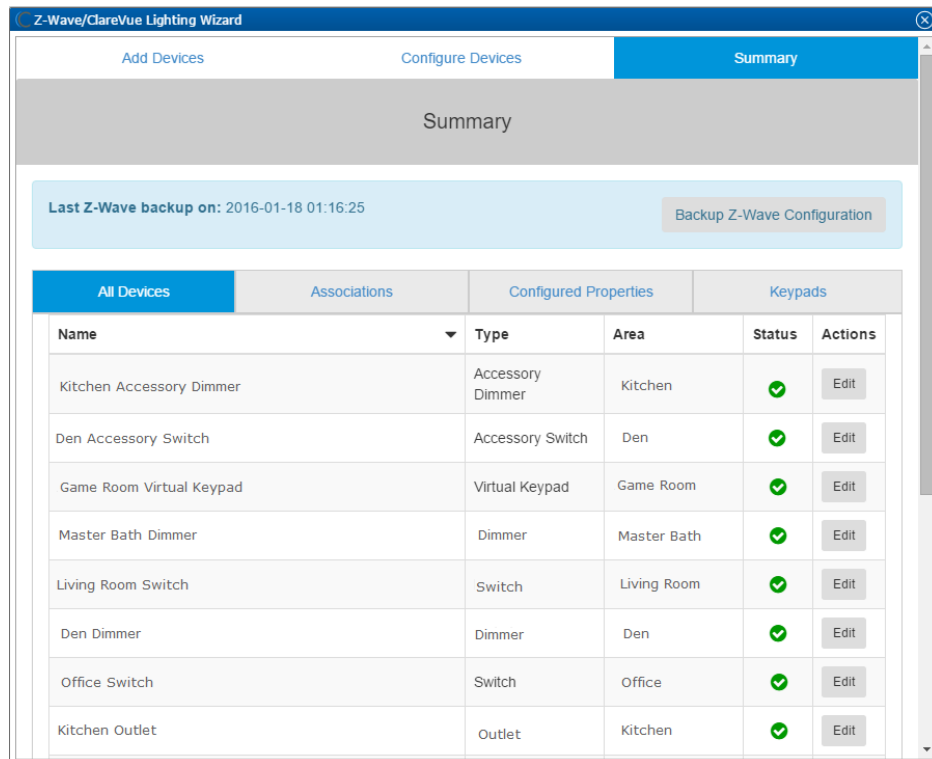
Name	Type	Area	Node ID	Device Status	Actions
Kitchen Dimmer	Dimmer	- Kitchen -	7	✔	Delete
Office Switch	Switch	- Office -	5	✔	Delete

Next

7. Click the **Summary** tab.

Notes

- All device configurations are done using the ClareHome or Install Assist apps.
- The GE lighting devices cannot be associated with ClareVue Lighting products.



8. Click the **Close Window** icon  in the top-right of the wizard to exit and return to the **Devices** tab.

Note: The Z-Wave devices added with the Z-Wave Wizard are automatically imported on the **Devices** tab.

Using the switch or dimmer in the ClareHome app

Once deployed, the user can add the device to their space, and then tap the lighting icon in the ClareHome app to display and operate the devices associated with the switch or dimmer, as shown below.

Figure 1: Switch on and off

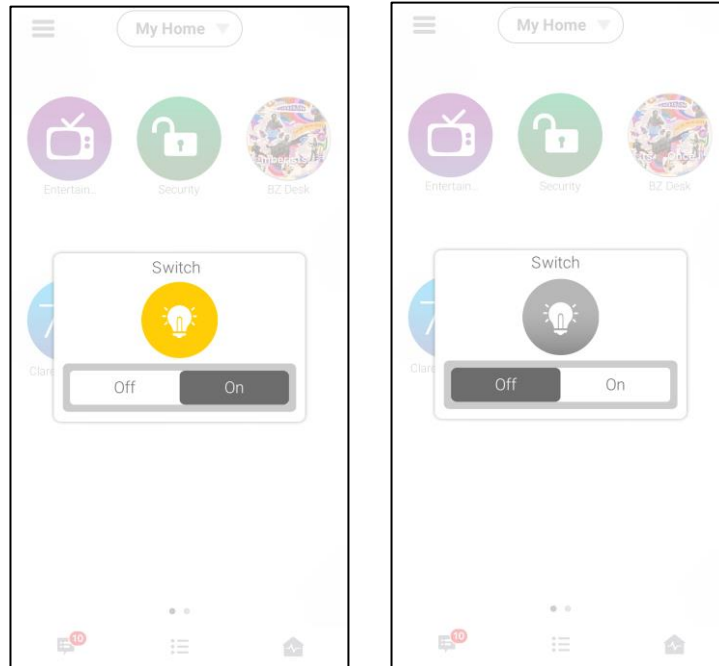


Figure 2: Dimmer at 60% and off

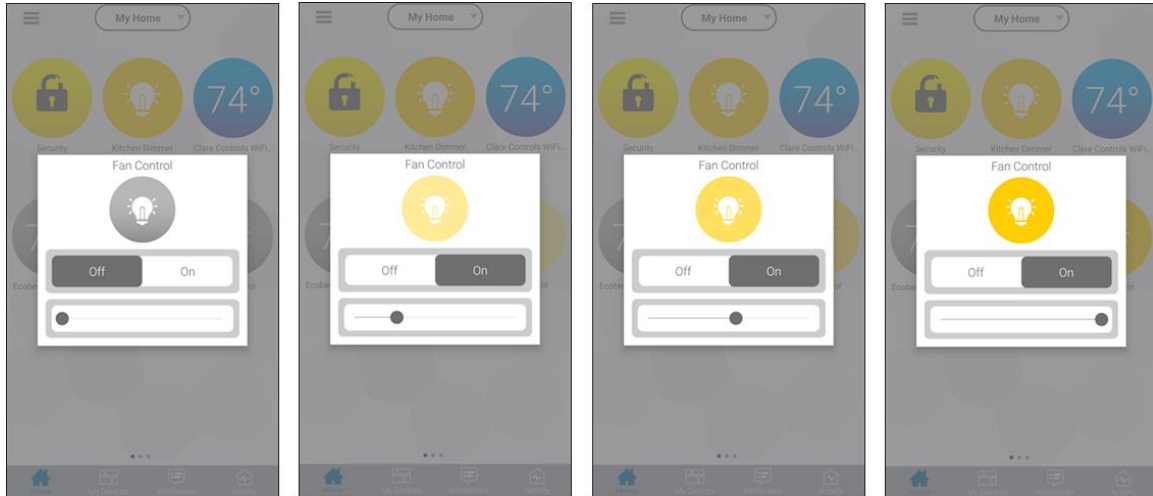


Using the fan control in the ClareHome app

Once deployed, the user can add the device to their space, and then tap the fan icon in the ClareHome app to display and control the associated fan.

The Jasco Z-Wave Plus In-Wall Smart Fan uses the same controls as a lighting dimmer device. The fan control has 4 states; off (0%), low (≈ 1 to 33%), medium (≈ 34 to 66%), and high (≈ 67 to 99%).

Figure 3: Fan control off, at low (≈ 1 to 33%), Medium (≈ 34 to 66%), and High (≈ 67 to 99%)



Contact information

Clare Controls, LLC.
7519 Pennsylvania Ave, Suite 104
Sarasota, FL 34243

General: 941.328.3991
Fax: 941.870.9646
www.clarecontrols.com

Integrator/Dealer Support: 941.404.1072
claresupport@clarecontrols.com

Homeowner Support (ClareCare): 941.315.2273 (CARE)
help@clarecontrols.com