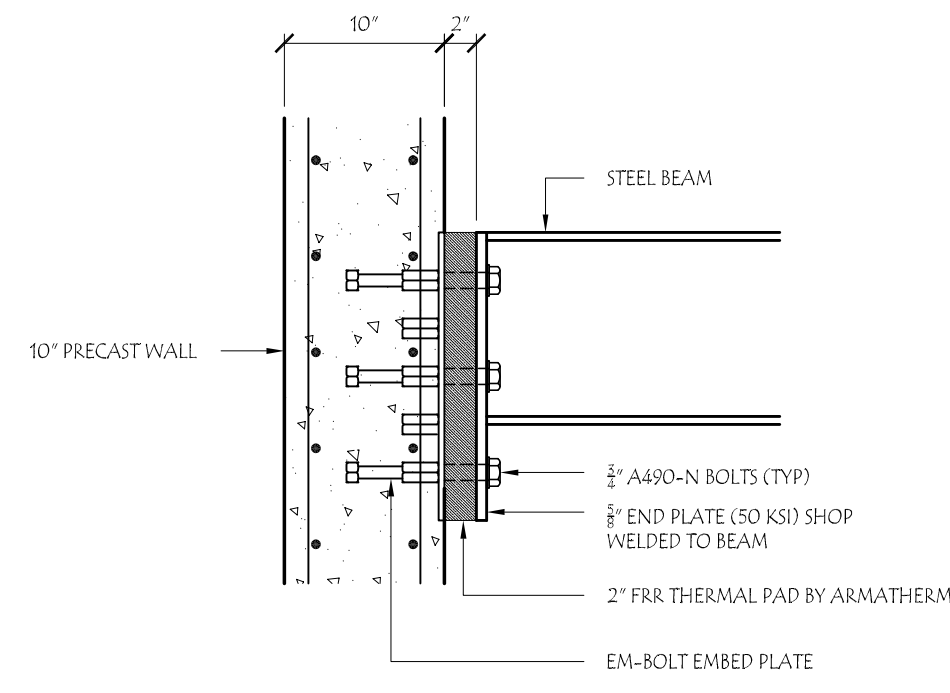
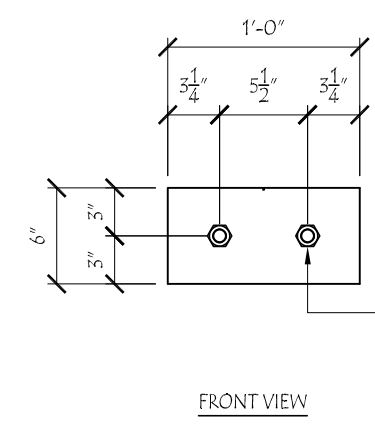
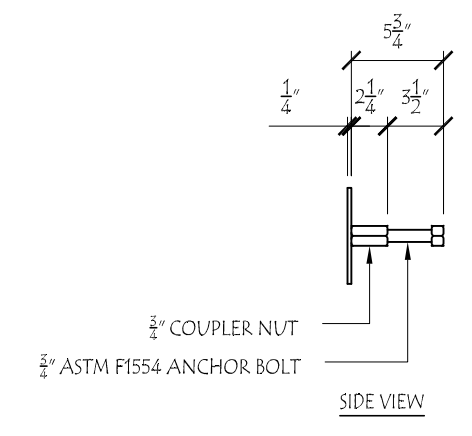


PLAN VIEW OF SKEWED MEZZANINE BEAM CONNECTION
SCALE: 1/4\"/>

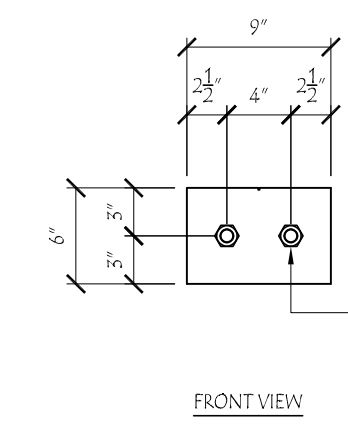
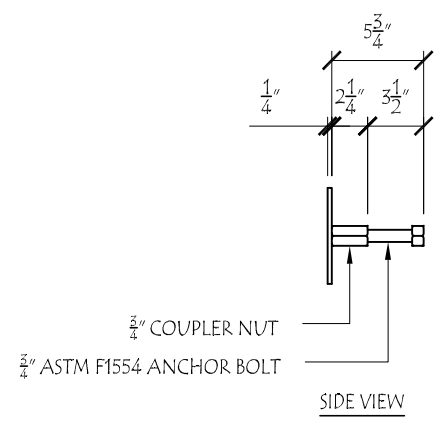


TYPICAL THERMALLY BROKEN BEAM CONNECTION TO EM-BOLT
SCALE: 1/4\"/>

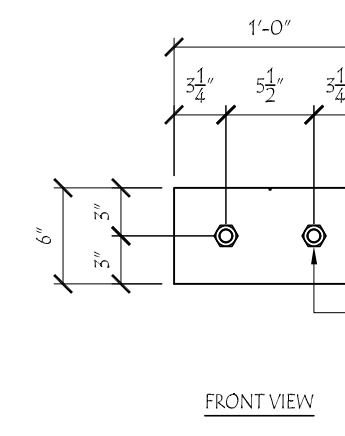
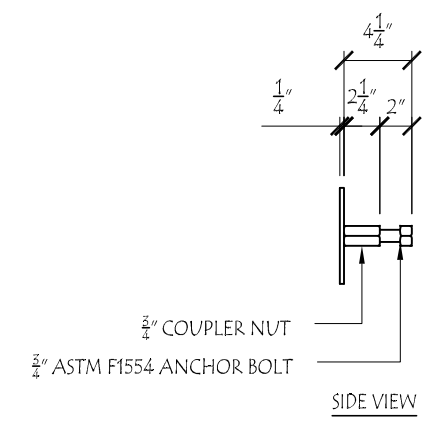
- GENERAL NOTES:
1. ALL BEAMS SHALL HAVE 3/8\"/>
 - 2. ALL END PLATES SHALL BE ASTM A572 (50 KSI).
 - 3. ALL EM-BOLT PLATES ARE 5/8\"/>
 - 4. FOR DETERMINING THE REQUIRED BOLT LENGTH OF THE A490 CONNECTION BOLTS, THE MAXIMUM AVAILABLE ENGAGEMENT OF THE BOLTS INTO THE EM-BOLT PLATE IS 5/8\"/>



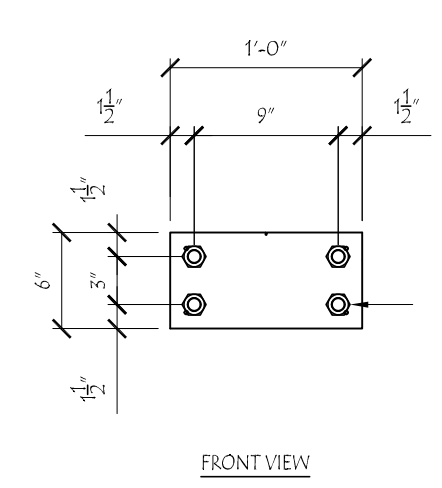
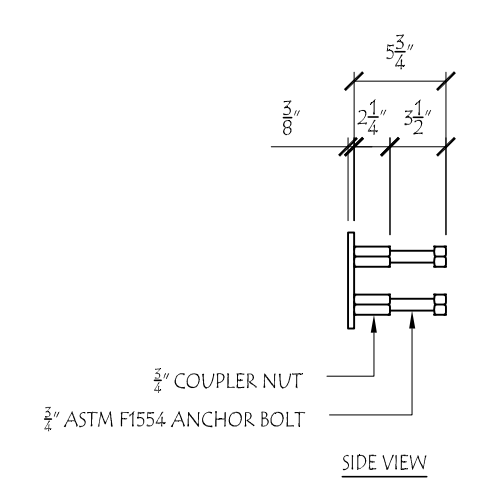
EM-BOLT "BEP-1" DETAILS (QTY = 45)
SCALE: 1/4\"/>



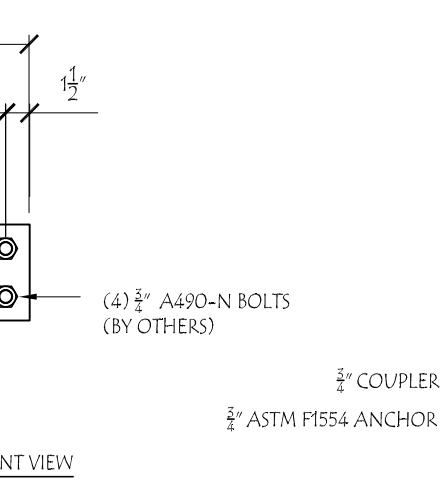
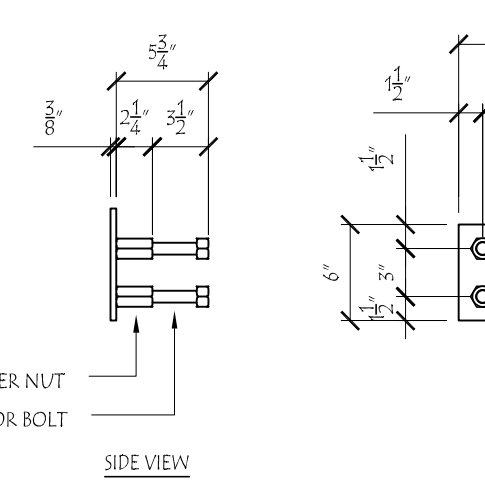
EM-BOLT "BEP-1.1" DETAILS (QTY = 3)
SCALE: 1/4\"/>



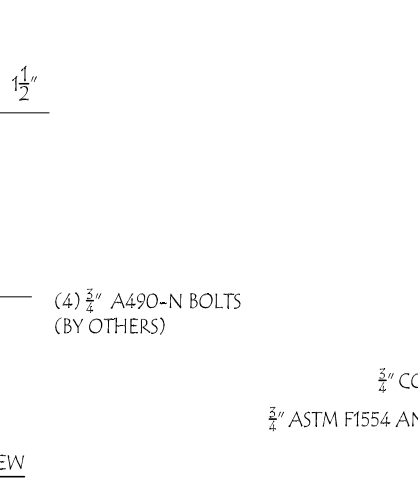
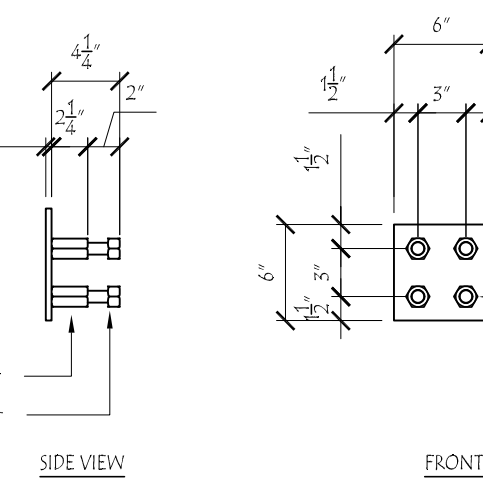
EM-BOLT "BEP-1.2" DETAILS (QTY = 1)
SCALE: 1/4\"/>



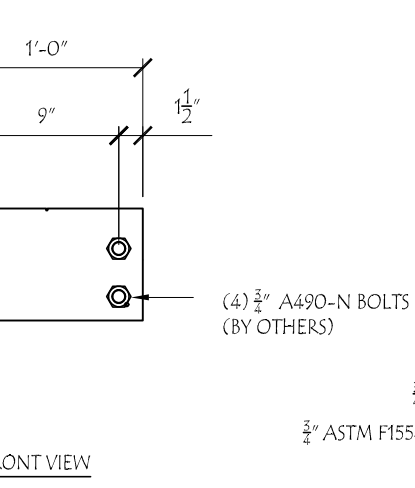
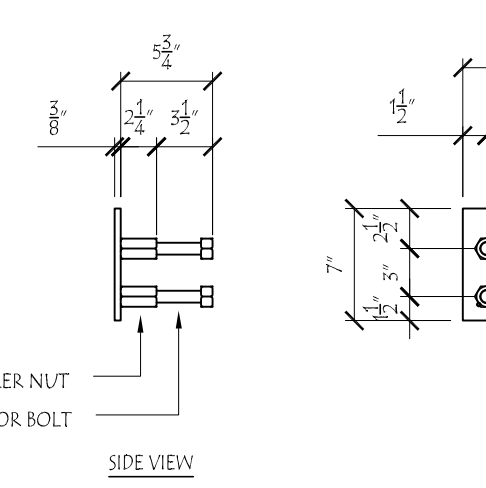
EM-BOLT "BEP-2A" DETAILS (QTY = 1)
SCALE: 1/4\"/>



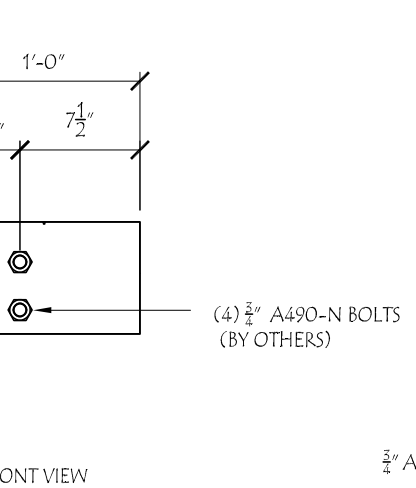
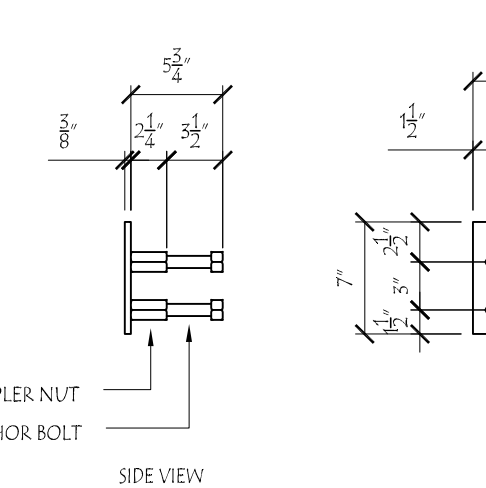
EM-BOLT "BEP-2B" DETAILS (QTY = 2)
SCALE: 1/4\"/>



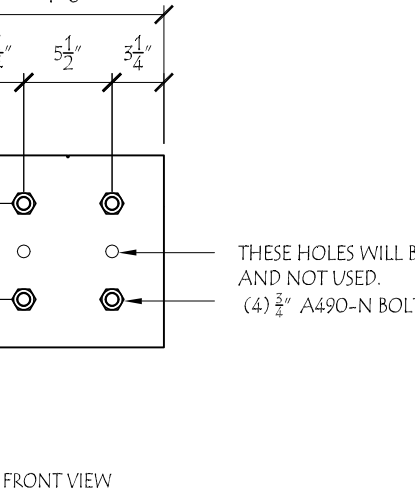
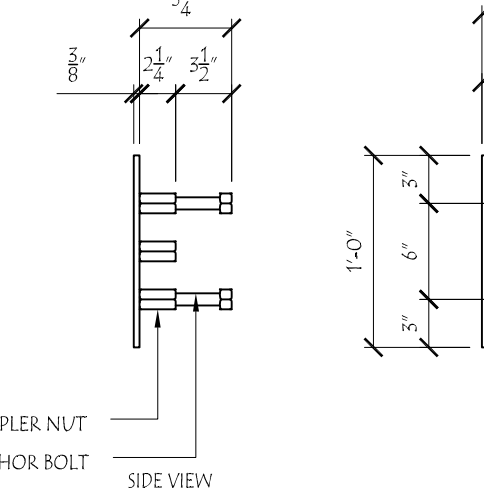
EM-BOLT "BEP-2B.2" DETAILS (QTY = 1)
SCALE: 1/4\"/>



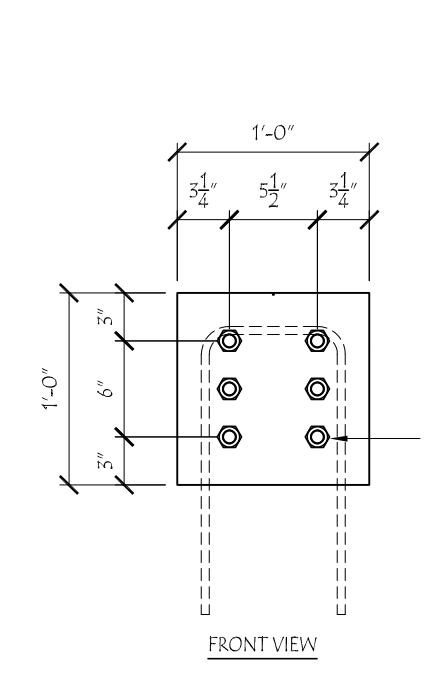
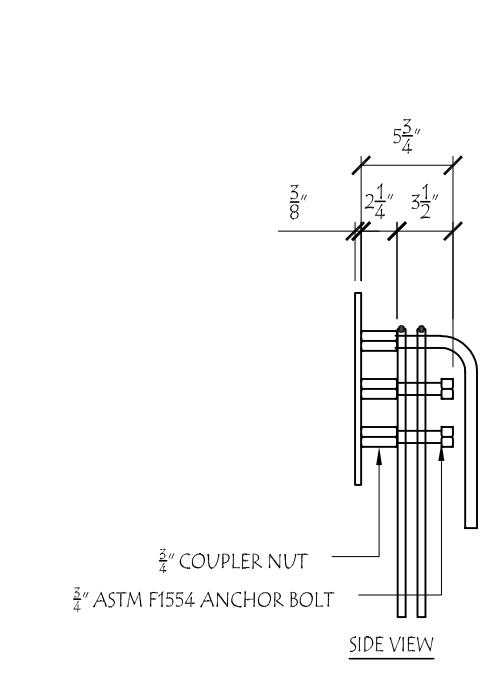
EM-BOLT "BEP-2C" DETAILS (QTY = 2)
SCALE: 1/4\"/>



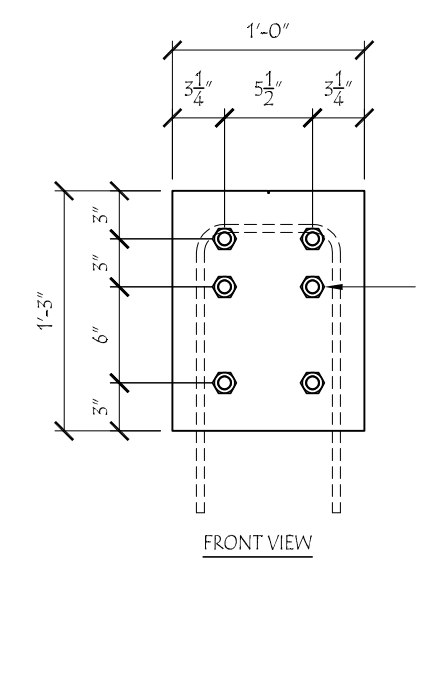
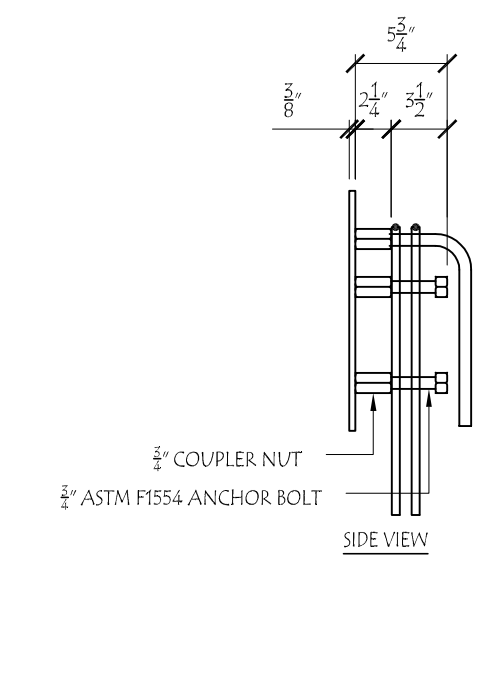
EM-BOLT "BEP-2D" DETAILS (QTY = 1)
SCALE: 1/4\"/>



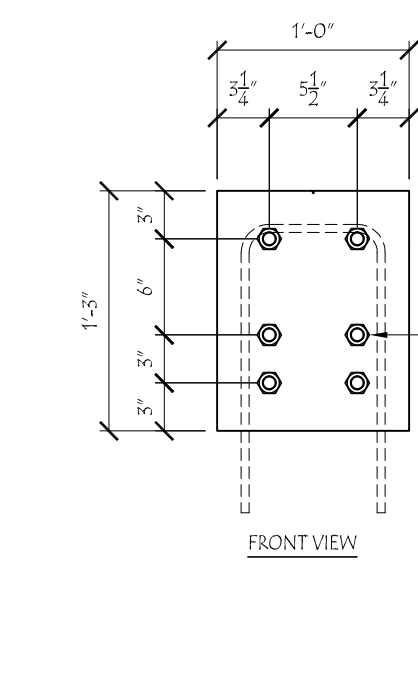
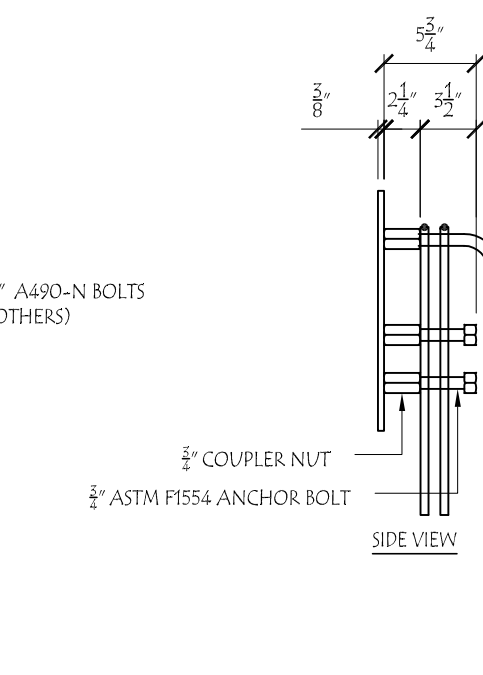
EM-BOLT "BEP-3" DETAILS (QTY = 1)
SCALE: 1/4\"/>



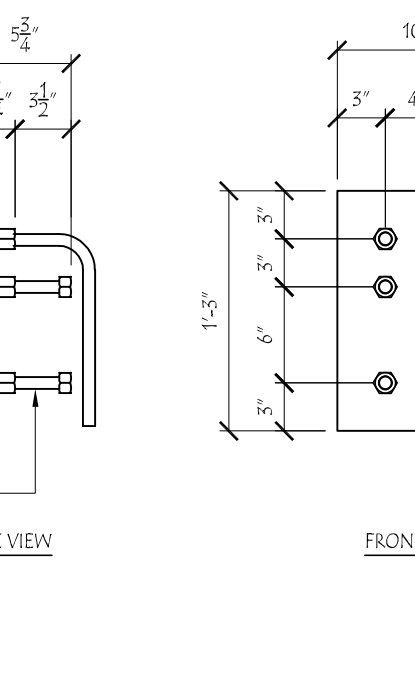
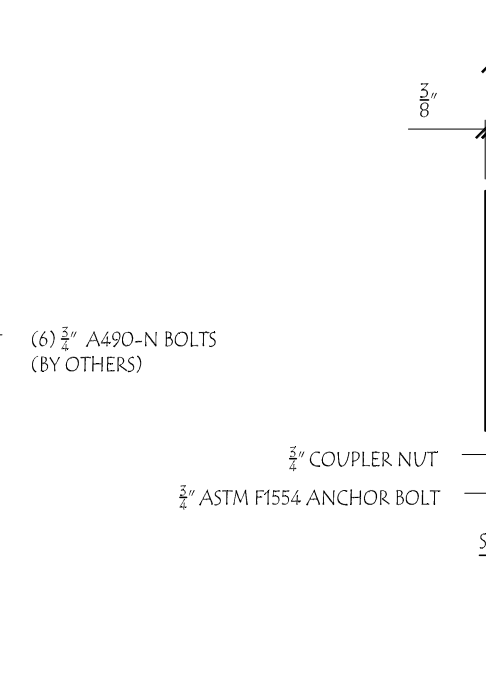
EM-BOLT "BEP-3.1" DETAILS (QTY = 3)
SCALE: 1/4\"/>



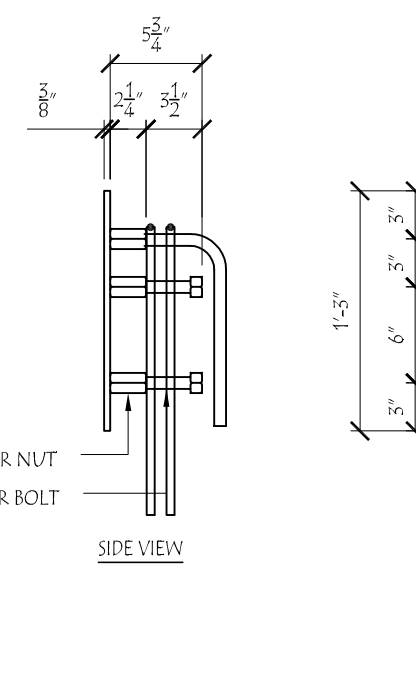
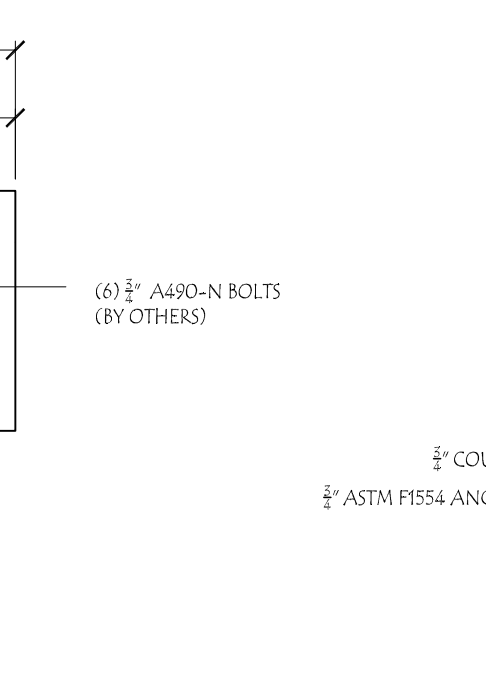
EM-BOLT "BEP-4" DETAILS (QTY = 4)
SCALE: 1/4\"/>



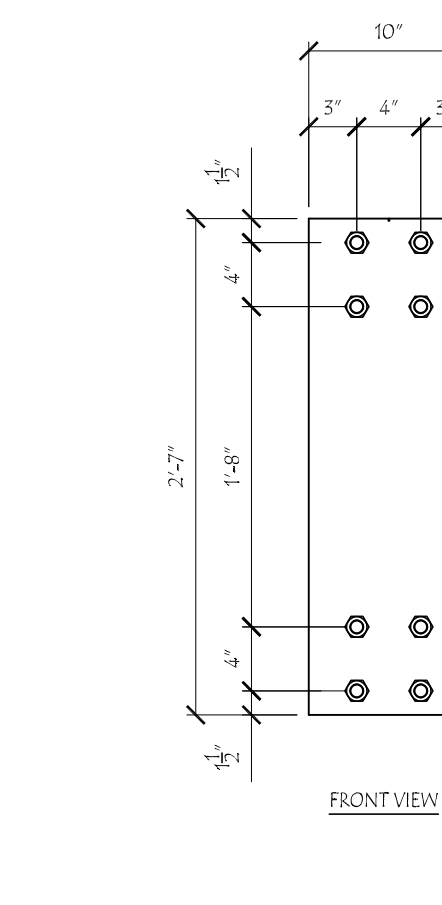
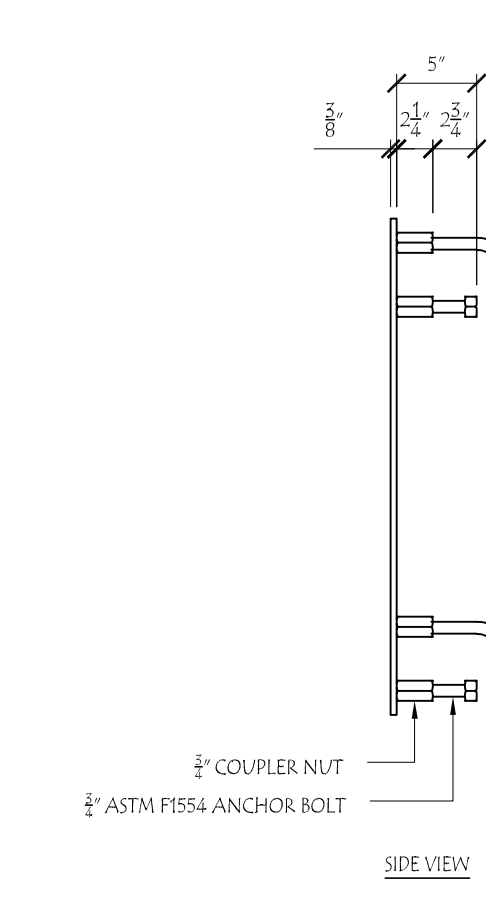
EM-BOLT "BEP-4.1" DETAILS (QTY = 6)
SCALE: 1/4\"/>



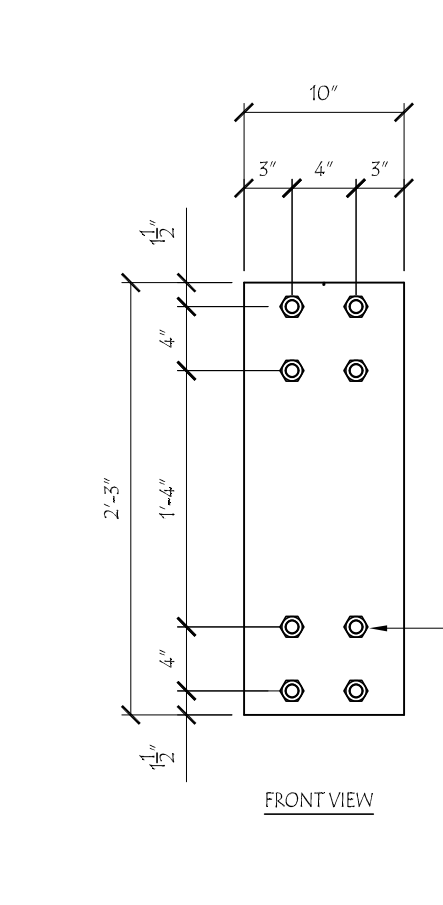
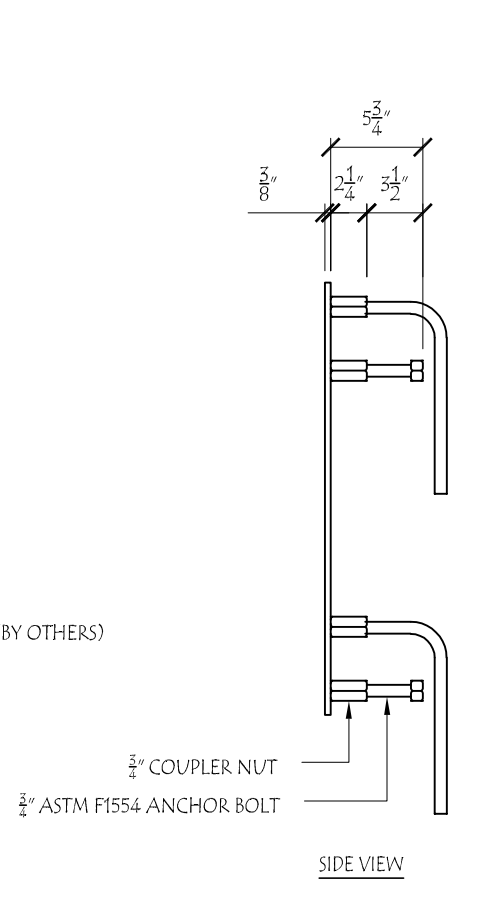
EM-BOLT "BEP-4A" DETAILS (QTY = 1)
SCALE: 1/4\"/>



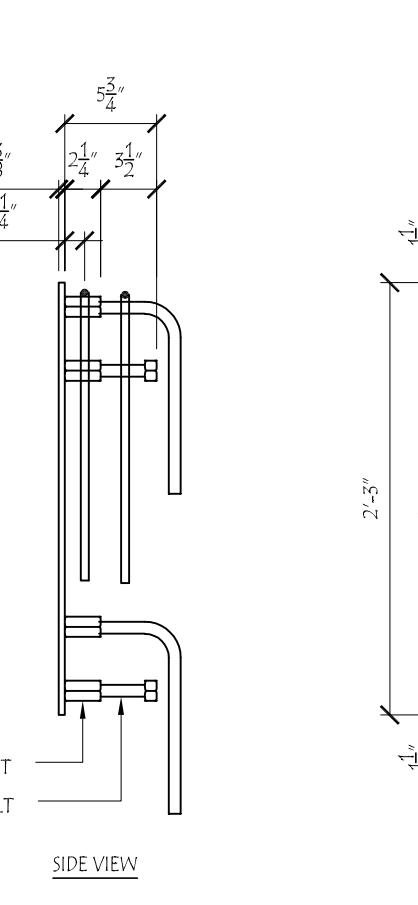
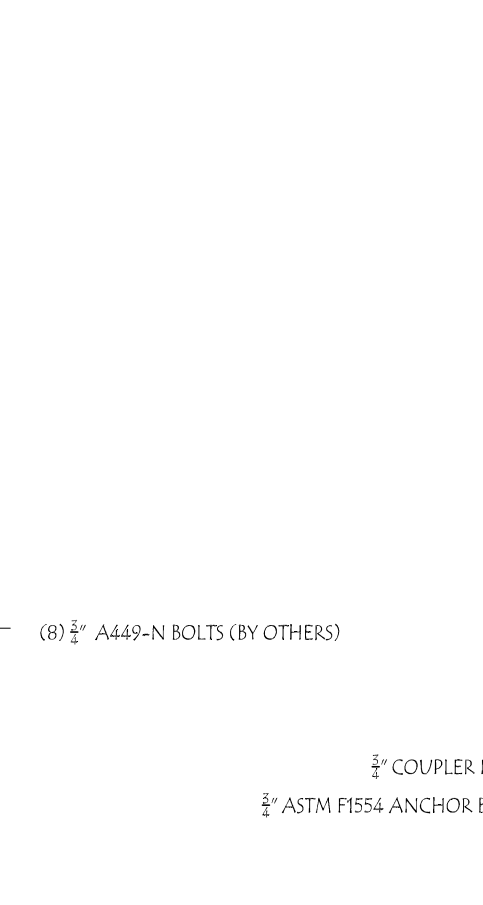
EM-BOLT "BEP-4AR" DETAILS (QTY = 2)
SCALE: 1/4\"/>



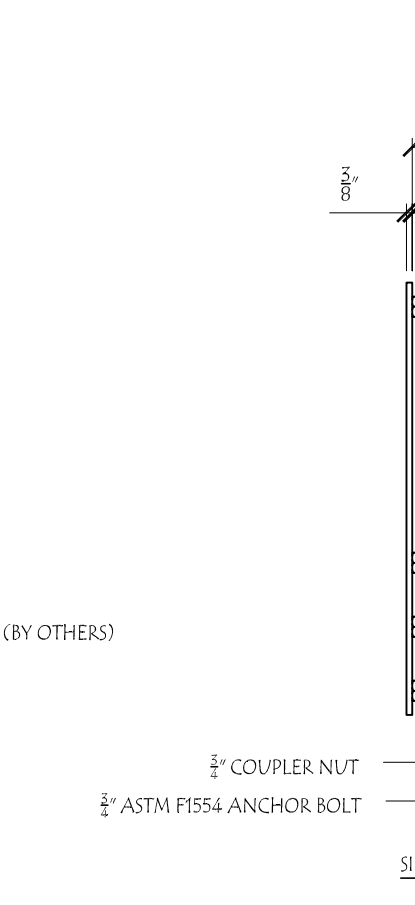
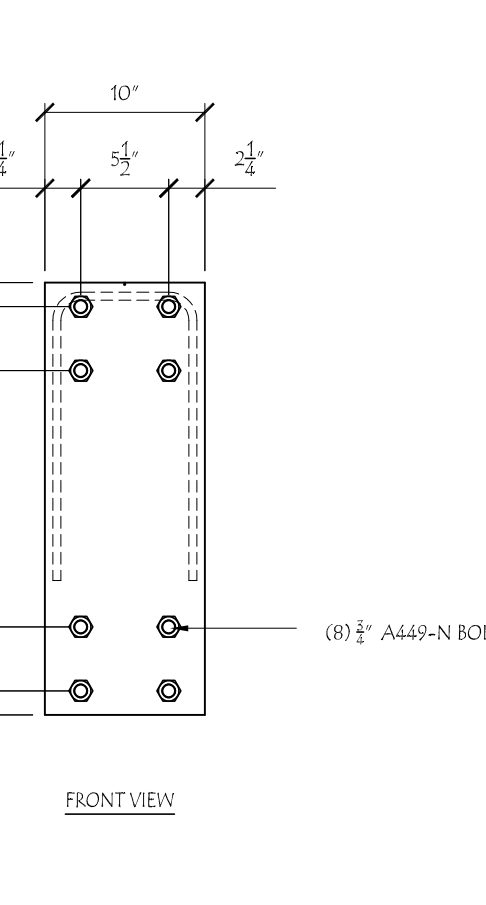
EM-BOLT "BEP-4D" DETAILS (QTY = 1)
SCALE: 1/4\"/>



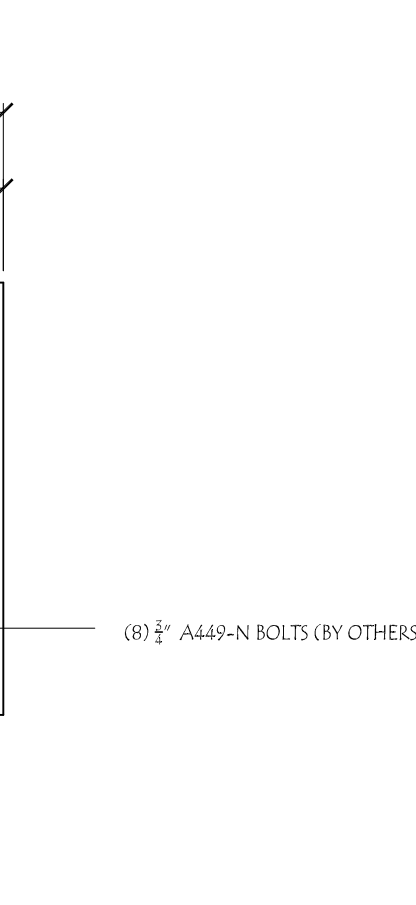
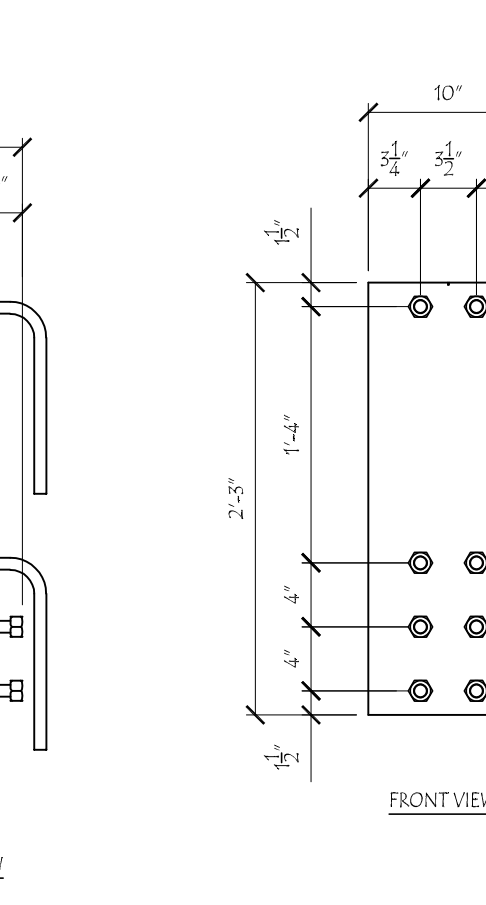
EM-BOLT "BEP-4C" DETAILS (QTY = 3)
SCALE: 1/4\"/>



EM-BOLT "BEP-4CR" DETAILS (QTY = 1)
SCALE: 1/4\"/>



EM-BOLT "BEP-4F" DETAILS (QTY = 1)
SCALE: 1/4\"/>



EM-BOLT "BEP-4F" DETAILS (QTY = 1)
SCALE: 1/4\"/>

SUBMISSION LOG		
DATE	DESCRIPTION	NO.
2/5/19	ISSUED FOR FINAL APPROVAL	4
10/23/18	REVISED PER S.E.R. COMMENTS	5
10/11/18	REVISED AS NOTED	2
10/9/18	ISSUED FOR APPROVAL	1

ENGINEER STAMP

HARDY
STRUCTURAL ENGINEERING
815 Roosevelt Hwy. Suite 130, Colchester, VT 05446
Phone: (802) 655-0755 Fax: (802) 655-2898
www.hardyspe.com

PROJECT
IAS RUBENSEIN COMMONS
PRINCETON, NJ

DRAWING TITLE
EM-BOLT PLATE DETAILS

PROJECT ENGINEER	ENGINEER OF RECORD
TIM HARDY	TIM HARDY
PROJECT CAD	PROJECT NUMBER
TIM HARDY	18-060.00
SCALE	DATE
AS NOTED	OCTOBER 9, 2018
DRAWING NUMBER	SUBMISSION
S1.1	4