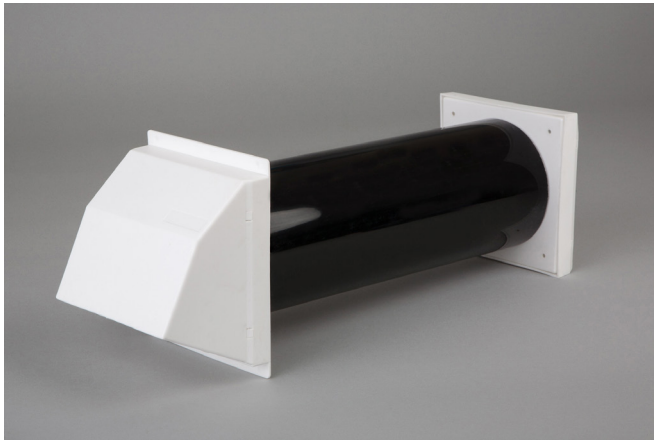


KORE

KORE Drill Proprietary Vent- Data Sheet



Key Features & Benefits

- Provides safe and effective ventilation of combustion appliances
- Available in a variety of colours
- Includes anti-draught baffle to reduce effective free area
- Input max 21kW (71,500 Btu/h) with baffle, & 27kW (92,000 Btu/h) without
- Meets all current Building Regulations, including Part F - Ventilation (2009) and requirements for all Better Energy Homes Schemes

Applications

The KORE Drill Proprietary Vent is designed to provide ventilation for combustion appliances. The KORE Drill allows air to be pulled through by appliance while in operation. Can be used with or without included baffle.

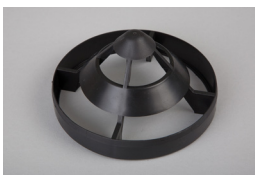
Technical Details

Free Area: 10,000mm² / 7,000mm² with baffle

Sizes: 127mm (5") diameter / 350mm length (14")

Colors: Brown cowl/white internal grille; white cowl/white internal grille; terracotta cowl, white internal grille

Accessories: Included anti-draught baffle, as shown below



Installation Guidelines

- Cut a 127mm hole (5") through entire thickness of wall using a 127mm core drill and power drill
- Insert the pipe duct into the hole and ensure the end sits flush with the wall's surface. If necessary, cut the pipe to sit flush with other side of wall and seal the ends with a suitable mastic
- Insert the baffle into the pipe duct about half-way with the point facing the inside of the building. Ensure the baffle is vertical within the pipe. You may skip this step if you do not intend on using the baffle.
- Remove both grilles from backplates by releasing clips on both sides. Using 4mm screws and wall plugs, secure the coloured backplate to outside of wall. Ensure the spigot is fully within the duct. Repeat this step with the white grille inside the building.
- Fit the cowl vent onto the backplate and secure using attached clips
- Repeat on the inside of property using white louvre grille.

The Green, Kilnaleck, Co. Cavan

T +353 49 4336998 F +353 49 4336823 E info@kore-icf.com

W www.kore-system.com

FB www.facebook.com/KOREIreland Twitter @KORESystem



A product of **AIRPACKS**