



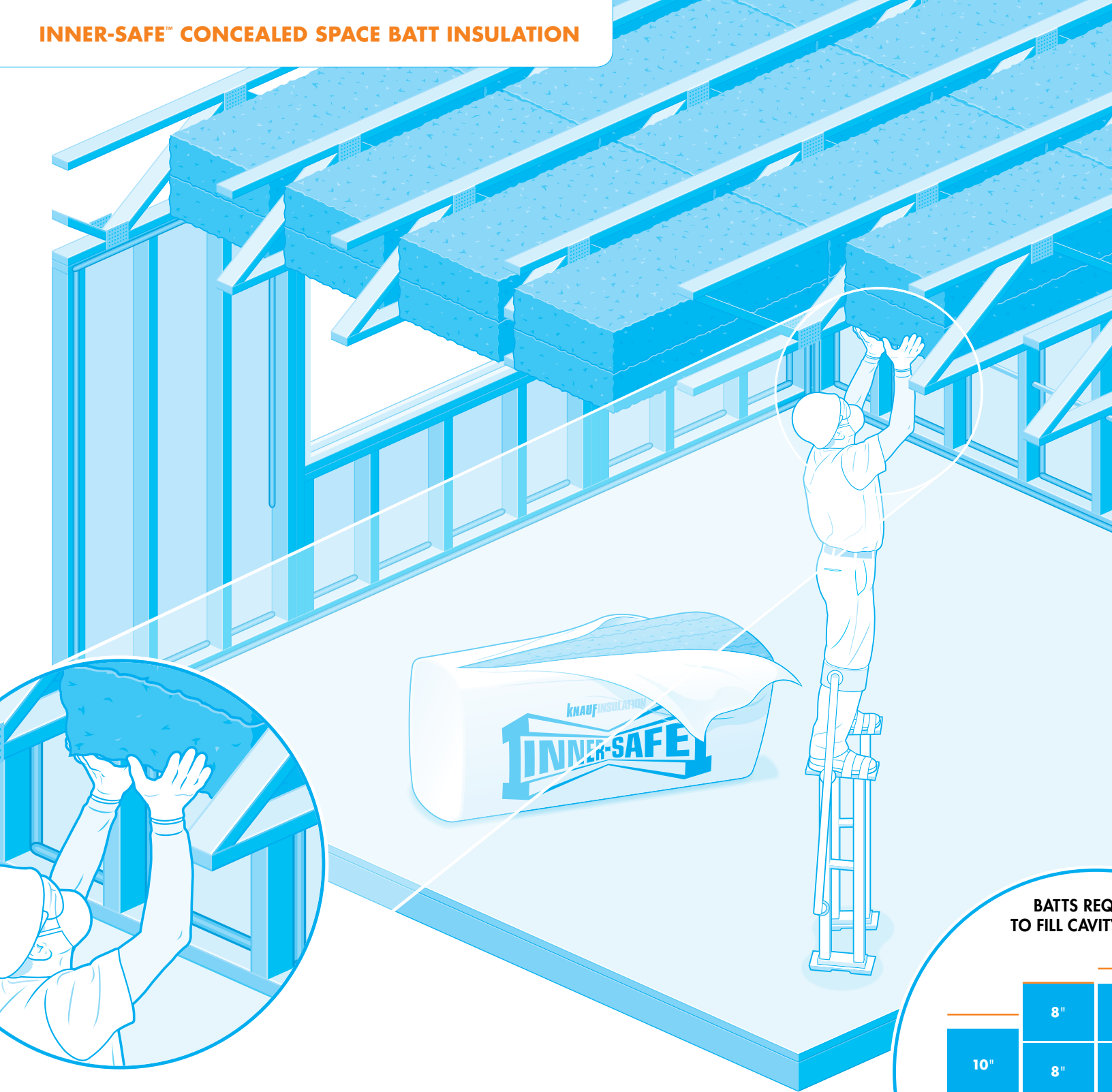
Inner-Safe™ Concealed Space Batt Insulation

A new non-combustible, NFPA 13-compliant
insulation for interstitial space.



KNAUF INSULATION

INNER-SAFE™ CONCEALED SPACE BATT INSULATION



Presenting a faster, easier and more affordable way to meet NFPA 13 Standard.

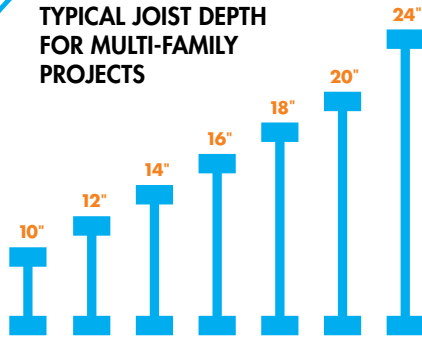
Once, NFPA 13 Standard only mandated the use of sprinklers in the interstitial spaces of multi-family construction projects. Now, code changes allow the substitution of insulation—and Inner-Safe™ Non-Combustible Concealed Space Batt Insulation is the cost-effective way to fill interstitial space. It's an innovative new alternative to sprinklers or blown-in insulation that meets and exceeds code, while installing quickly, easily and affordably.

BATTS REQUIRED TO FILL CAVITY

	8"	
10"	8"	
12" JOIST	16" JOIST	

The chart above shows a number of different configurations of double-batt configurations that meet the NFPA 13 Standard.

TYPICAL JOIST DEPTH FOR MULTI-FAMILY PROJECTS



Inner-Safe Concealed Space Batt Insulation works with all common joist types used in multi-family construction.

What Inner-Safe brings to your project:

Simplicity

- Satisfies a range of joist thicknesses from 8\" to 24\"
- Easier to estimate and allocate labor
- Friction-fit into cavities—no fasteners or support needed
- Same batt crews for walls and floor
- Provides easier inspection, via a depth indicator on its packaging

Advantages over sprinklers

- Inner-Safe requires no specialized labor or equipment to install
- Eliminates long-term maintenance and inspection costs
- Inner-Safe enhances thermal separation and noise reduction

Advantages over loose-fill and traditional batt insulation

- Inner-Safe Concealed Space Batt Insulation requires no additional, specialized equipment—such as a blowing wool truck—on the jobsite
- Eliminates additional labor and netting material needed with loose-fill installs
- Inner-Safe installation costs are roughly half of a loose-fill application

REQUIRED JOIST DEPTHS

8"	10"
8"	10"
18" JOIST	20" JOIST

representative sample
joists, in single- or
multiple joist
applications, that meet
requirements.

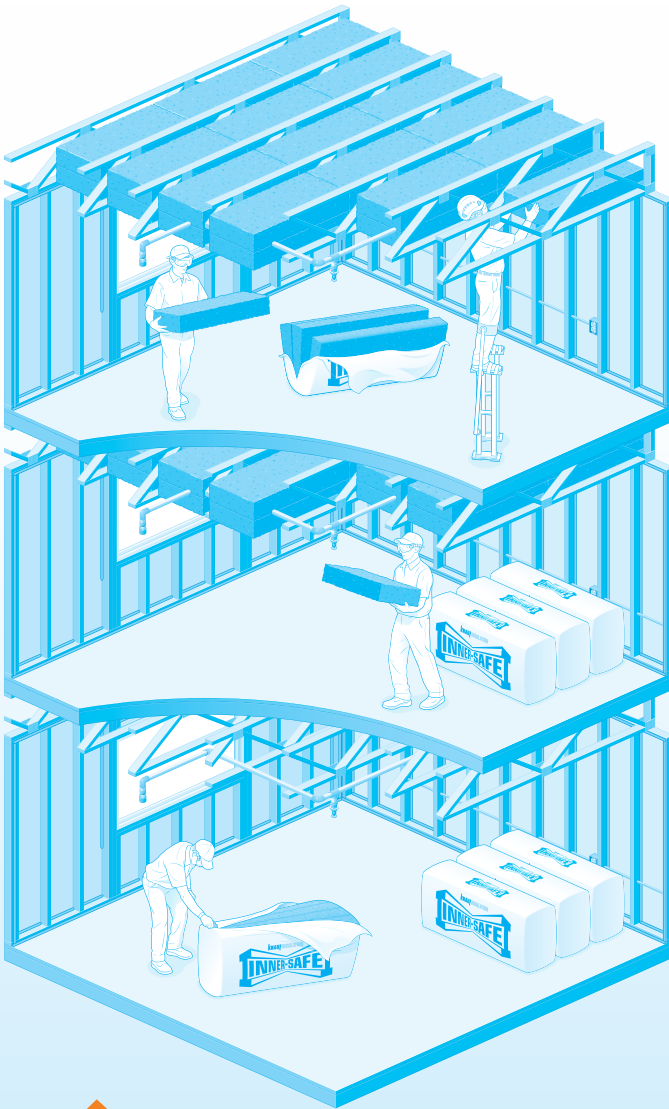
DEFINING NFPA 13 STANDARD

NFPA 13, SECTION 8.15.1.2.7:

Concealed spaces filled with non-combustible insulation shall not require sprinkler protection.

NFPA 13, SECTION 8.15.1.2.7.1:

A maximum 2 in. air gap at the top of the space shall be permitted.



USE KNAUF INSULATION THROUGHOUT YOUR PROJECT

In multi-family and other construction projects, our products work together to seal the building envelope—offering enhanced comfort, energy-efficiency and sustainability.

Learn more about our full product line now, by visiting knaufinsulation.us/en/products



TYPICAL HIGH-RISE INFRASTRUCTURE WITH FIRE SPRINKLER RETROFIT

In the past, interstitial space—the area between regular-use floors—has required sprinklers to lessen the threat of fire spreading. But as multi-story buildings rise higher, so does the cost and hours required to install sprinklers. Today, Inner-Safe™ Concealed Space Batt Insulation lets you cost-effectively meet code while filling the interstitial space.



Knauf Insulation, Inc.
One Knauf Drive
Shelbyville, IN 46176

Sales (800) 825-4434, ext. 8485

Technical Support..... (800) 825-4434, ext. 8727

www.knaufinsulation.us

This product is covered by one or more U.S. and/or other patents.
 See www.knaufinsulation.us/patents

© 2016 Knauf Insulation, Inc. BI-BTIS-BR 12-16

KNAUF INSULATION