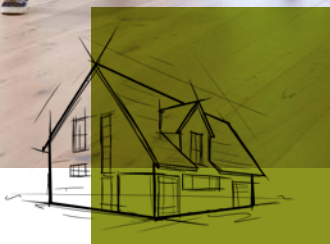
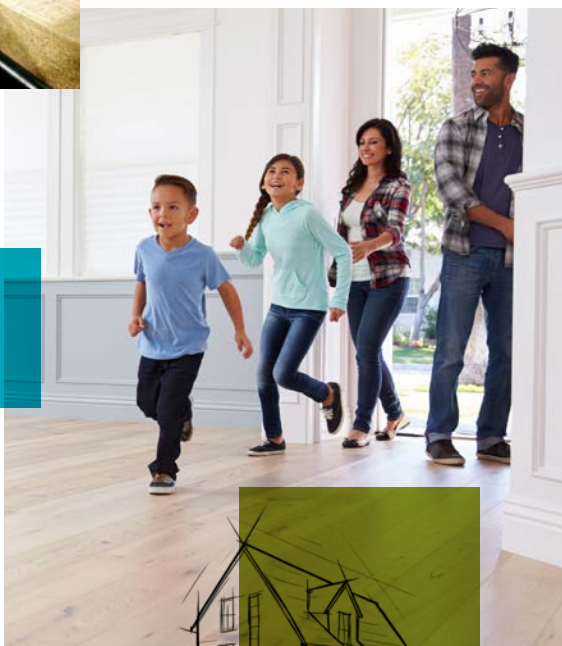
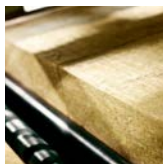


BUILDING INSULATION

Residential Product Guide



ROCKWOOL™

A global leader

ROCKWOOL is part of ROCKWOOL International, the world's largest producer of stone wool insulation – a material that improves the quality of life for millions of people.

ROCKWOOL operates 28 factories on 3 continents. In North America, ROCKWOOL is the leading manufacturer of stone wool insulation products.

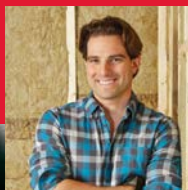
ROCKWOOL's unique thermal insulation products provide indoor comfort in summer and winter, and help reduce heating and cooling costs. Those energy savings also translate into reduced CO₂ emissions.

Dependability the experts trust

As a trusted contractor, real estate investor and host of TV's *Income Property*, Scott McGillivray is passionate about educating and assisting homeowners in making smart remodel decisions. That's why he uses and installs ROCKWOOL insulation products for all of his building and design projects.

"Insulation is critical to the comfort and safety of any home, but not all insulation products are created equal. I always turn to ROCKWOOL stone wool insulation. ROCKWOOL not only saves energy, it's fire resistant, water repellent and sound absorbent. It's proven to stand the test of time."

- Scott McGillivray



What it's made of makes all the difference

More Than A Rock. ROCKWOOL insulation is made from natural stone and recycled material. Its unique non-directional fibre structure and higher density give it better dimensional stability and make it an effective barrier against noise.

ROCKWOOL COMFORTBATT®, SAFE'n'SOUND® and COMFORTBOARD™ 80 offer far more than conventional insulations. Don't settle for anything less when you build or renovate.



Fire Resistant

In the event of a fire, every second counts. ROCKWOOL insulation helps protect you and your family by delaying the spread of fire. ROCKWOOL products can withstand temperatures up to 1177°C.



Water Repellent

ROCKWOOL insulation repels water, so R-value is not affected. It is also completely resistant to rot, mildew, mould, and bacterial growth – contributing to a safer indoor environment in your home.



Easy Fit

The higher density of ROCKWOOL insulation provides superior sag resistance and fit. Once installed, the insulation holds its shape without sagging or slumping in the wall cavity to provide continuous fire protection and thermal performance over time.



Made from Stone

ROCKWOOL insulation is made from natural stone and recycled material. Its non-directional fibre structure and higher density give it better dimensional stability and make it an effective barrier against noise.

Insulate to save energy

An energy-efficient house is a better home. With ROCKWOOL COMFORTBATT® insulation, it's also a more comfortable living environment for you and your family. COMFORTBATT® helps keep the outside outside, to keep your home warm in the winter, and cool in the summer. That also translates into reduced heating and air conditioning costs – and a house that is easier on the environment.

R-value is the measurement of an insulation's ability to prevent heat flow. The higher the R-value, the more insulating power it provides. Additionally, while moisture significantly reduces the R-value of many other popular insulation materials, COMFORTBATT® does not store or transfer moisture so the R-value you install will remain the same year after year.

Insulate for a quiet home

Nothing beats the tranquility of a quiet home – and that's exactly what ROCKWOOL SAFE'n'SOUND® provides. It's an innovative, high-density insulation that's specifically designed to absorb sound and reduce noise from travelling from one room to another. Unlike thermal insulation, SAFE'n'SOUND® is used for soundproofing interior walls and for ceilings between rooms. Made from stone, SAFE'n'SOUND® reduces sound transmission by trapping sound waves and vibrations in the thousands of tiny interconnected spaces created by its unique fibre structure.

Insulation that's planet friendly



ROCKWOOL is a member of the Canada Green Building Council (CaGBC) representing environmental responsibility & sustainability



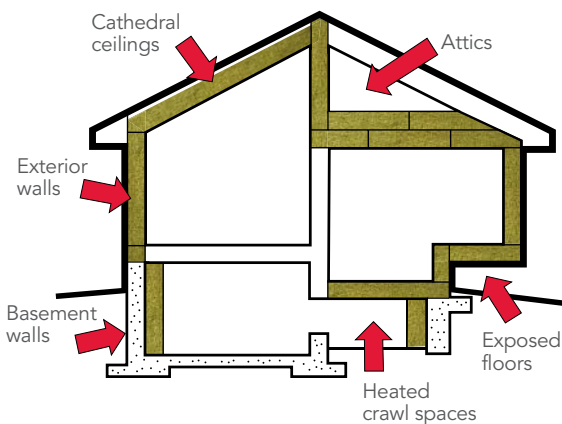
ROCKWOOL insulation has received GreenGuard's most stringent certification for indoor air quality.



CFC and HCFC free, so they don't deplete the earth's protective ozone layer. ROCKWOOL insulation products are made from natural stone and up to 40% recycled materials.

Maximize the comfort

ROCKWOOL COMFORTBATT® installed in exterior walls is a great way to save energy, but there are other applications that can make a big difference in your home's comfort. Insulating the exposed concrete walls in basements and heated crawl spaces, as well as increasing the insulation in your attic, are all effective ways to improve your home's energy efficiency.



The importance of vapour barriers

A vapour barrier/retarder may be required to control vapour transmission and minimize condensation in walls and ceilings. While many professional contractors feel that polyethylene is the best choice, you should always consult your local building code when you're doing the work yourself.

For technical support contact us at **rockwool.com** or by phone at **1-800-265-6878**.



COMFORTBATT®

Thermal Home Insulation



How much
you'll need

R14-16" on centre

Covers: 59.7 ft.² (5.55 m²)
Length: 47 in. (1194 mm)
Width: 15¼ in. (387 mm)
Thickness: 3½ in. (89 mm)
12 BATTS



R14-24" on centre

Covers: 61.1 ft.² (5.58 m²)
Length: 47 in. (1194 mm)
Width: 23 in. (584 mm)
Thickness: 3½ in. (89 mm)
8 BATTS



R22-16" on centre

Covers: 39.8 ft.² (3.70 m²)
Length: 47 in. (1194 mm)
Width: 15¼ in. (387 mm)
Thickness: 5½ in. (140 mm)
8 BATTS



R22-24" on centre

Covers: 37.5 ft.² (3.48 m²)
Length: 47 in. (1194 mm)
Width: 23 in. (584 mm)
Thickness: 5½ in. (140 mm)
5 BATTS



R24-16" on centre

Covers: 29.4 ft.² (2.73 m²)
Length: 47 in. (1194 mm)
Width: 15 in. (381 mm)
Thickness: 5½ in. (140 mm)
6 BATTS



R24-24" on centre

Covers: 29.7 ft.² (2.76 m²)
Length: 47 in. (1194 mm)
Width: 22¾ in. (578 mm)
Thickness: 5½ in. (140 mm)
4 BATTS



COMFORTBATT®

Thermal Home Insulation



How much
you'll need

R28-16" on centre

Covers: 29.9 ft.² (2.78 m²)
Length: 47 in. (1194 mm)
Width: 15¼ in. (387 mm)
Thickness: 7¼ in. (184 mm)

6 BATTS



R28-24" on centre

Covers: 30.7 ft.² (2.85 m²)
Length: 47 in. (1194 mm)
Width: 23 in. (584 mm)
Thickness: 7¼ in. (184 mm)

4 BATTS



R32-16" on centre

Covers: 29.9 ft.² (2.78 m²)
Length: 47 in. (1194 mm)
Width: 15¼ in. (387 mm)
Thickness: 8 in. (203 mm)

6 BATTS



R32-24" on centre

Covers: 30.0 ft.² (2.78 m²)
Length: 47 in. (1194 mm)
Width: 15¼ in. (387 mm)
Thickness: 8 in. (203 mm)

4 BATTS



Steel
Stud

COMFORTBATT®

Thermal Home Insulation



How much
you'll need

R10-16" on centre

Covers: 86.7 ft.² (8.05 m²)
Length: 48 in. (1219 mm)
Width: 16¼ in. (413 mm)
Thickness: 2½ in. (63.5 mm)
16 BATTS



R14-16" on centre

Covers: 65 ft.² (6.08 m²)
Length: 48 in. (1219 mm)
Width: 15¼ in. (387 mm)
Thickness: 3½ in. (89 mm)
12 BATTS



R14-24" on centre

Covers: 64.7 ft.² (6.01 m²)
Length: 48 in. (1219 mm)
Width: 24¼ in. (616 mm)
Thickness: 3½ in. (89 mm)
8 BATTS



Steel
Stud

COMFORTBATT®

Thermal Home Insulation



How much
you'll need

R22.5-16" on centre

Covers: 43.3 ft.² (4 m²)
Length: 48 in. (1219 mm)
Width: 16¼ in. (413 mm)
Thickness: 6 in. (152.4 mm)
8 BATTS



R22.5-24" on centre

Covers: 40.4 ft.² (3.75 m²)
Length: 48 in. (1219 mm)
Width: 24¼ in. (616 mm)
Thickness: 6 in. (152.4 mm)
5 BATTS



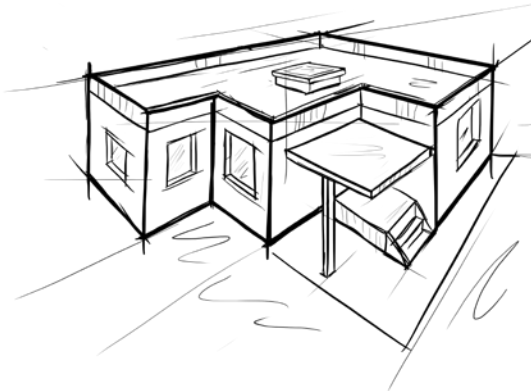
R24-16" on centre

Covers: 43.3 ft.² (13.2 m²)
Length: 48 in. (1219 mm)
Width: 16¼ in. (413 mm)
Thickness: 6 in. (152.4 mm)
8 BATTS



R24-24" on centre

Covers: 40.4 ft.² (3.75 m²)
Length: 48 in. (1219 mm)
Width: 24¼ in. (616 mm)
Thickness: 6 in. (152.4 mm)
5 BATTS

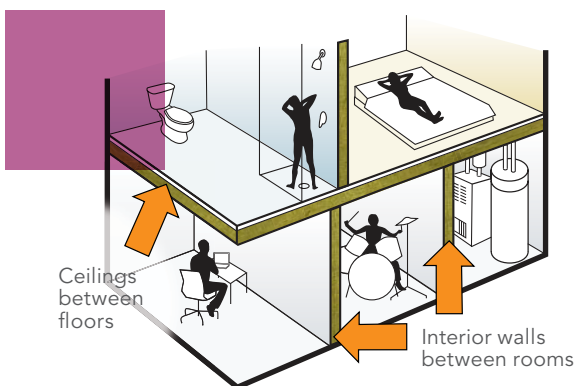


Maximize the peace & quiet

Installing ROCKWOOL SAFE'n'SOUND® inside interior walls and in ceilings between floors is a great way to reduce sound transmission and improve fire resistance. Higher-density batts more effectively reduce airflow, thereby decreasing sound transmission.

Typical applications include:

- Bedrooms
- Bathrooms
- Home Offices
- Home Theatre Rooms
- Basements
- Furnace/Laundry Rooms



Interior Walls

(Wood Studs – 16" On Centre) Using SAFE'n'SOUND®, 5/8" drywall (type x) and resilient channels at 16" provides:

Fire Rating: 1 hour

Sound Transmission Class (STC): 45

Ask your building supply retailer about the benefits of using resilient channels for your project.

Interior Walls

(Steel Studs – 24" On Centre)
Using SAFE'n'SOUND®, 5/8" drywall (type x)
(type x):

Fire Rating: 1 hour

Sound Transmission Class (STC): 52

Interior Ceilings/Floors

(2 x 10 Joists – 16" On Centre) Using SAFE'n'SOUND®, 5/8" drywall (type x) and resilient channels at 24" provides:

Fire Rating: 30 minutes

Sound Transmission Class (STC): 50



Wood
Stud

SAFE'n'SOUND®

Fire & Soundproofing Insulation



How much
you'll need

16"–Wood on centre

Covers: 59.7 ft.² (5.55 m²)
Length: 47 in. (1194 mm)
Width: 15¼ in. (387 mm)
Thickness: 3 in. (76 mm)

12 BATTS



24"–Wood on centre

Covers: 60.1 ft.² (5.58 m²)
Length: 47 in. (1194 mm)
Width: 23 in. (584 mm)
Thickness: 3 in. (76 mm)

8 BATTS



Steel
Stud

16"–Steel on centre

Covers: 64 ft.² (5.95 m²)
Length: 48 in. (1219 mm)
Width: 16¼ in. (413 mm)
Thickness: 3 in. (76 mm)

12 BATTS



24"–Steel on centre

Covers: 64 ft.² (5.95 m²)
Length: 48 in. (1219 mm)
Width: 24¼ in. (616 mm)
Thickness: 3 in. (76 mm)

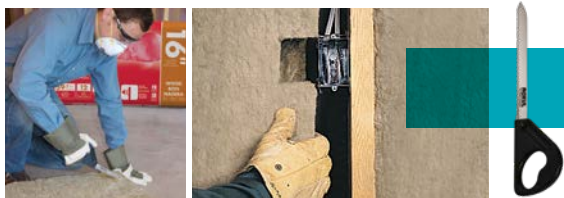
8 BATTS



ROCKWOOL fire-resistant and water-repellent insulation is recommended by the Council of Canadian Fire Marshals and Fire Commissioners.

Easy to install

Working with ROCKWOOL insulation is a breeze.



It cuts quickly and accurately with a serrated knife, such as a bread knife, so you can easily achieve optimal fit around pipes, electrical boxes, wiring, ductwork, and between studs and joists that are less than a standard width.



Insert. Compress. Release.

Those three simple steps are all it takes to get a snug fit. That great fit is one of the reasons ROCKWOOL COMFORTBATT® delivers maximum R-value and energy savings, and why ROCKWOOL SAFE'n'SOUND® is so effective at bringing peace and quiet to your home.



Insist on ROCKWOOL for your next renovation project. It's available at quality building supply retailers near you.

For additional information, visit rockwool.com

Maximize the energy savings

To reduce your overall heating and cooling costs, it pays to insulate your interior foundation walls. That means paying attention to the higher required R-values for most basement wall assemblies. Increase R-values by installing a combination of two ROCKWOOL insulation products: COMFORTBOARD™ 80 and COMFORTBATT® thermal insulation.



- 1** Concrete Foundation
- 2** COMFORTBOARD™ 80 Insulated Sheathing
- 3** 2 x 4 Stud Wall
- 4** COMFORTBATT® Insulation
- 5** Vapour Control Layer (where required)*
- 6** Gypsum Wall Board

Installation recommendations



- 1** Mechanically fasten COMFORTBOARD™ 80 to the concrete wall.
(Eg. Use 4 to 6 concrete nails and washers per board as needed.)



- 2** Install wall studs directly against COMFORTBOARD™ 80, leaving no gaps or air space.



- 3a** Install 3.5" COMFORTBATT® wood stud insulation between studs.
- 3b** Install vapour barrier where required.*



- 4** Apply drywall panels horizontally or vertically to framing.

* Consult local area building codes.

COMFORTBOARD™ 80

Continuous Exterior Insulation



Reduce Thermal Bridging

COMFORTBOARD™ 80 helps reduce thermal bridging through wood framing, leading to a higher-performing building envelope.

ROCKWOOL COMFORTBOARD™ 80 is a rigid stone wool continuous insulation board used as a non-structural sheathing product in residential construction.

It is designed to provide increased thermal performance to the building envelope. Installing COMFORTBOARD™ 80 as continuous insulation with our ROCKWOOL COMFORTBATT® as the wall cavity insulation contributes to a higher effective R-value wall system.

COMFORTBOARD™ 80 is non-combustible, vapor permeable, water repellent and sound absorbent.

It has also received ICC-ES validated product acceptance in accordance to IRC and IBC for the following uses:

- Non-structural thermal insulation in non-fire-resistive rated dwellings
- Exterior perimeter insulation around foundation and under flat concrete slab
- A component of residential wood-framed cathedral ceilings
- In areas where probability of termite infestation is 'very heavy.'



3773

COMFORTBOARD™ 80

Insulated Sheathing



How much
you'll need

R5

Covers: 56 ft.² (5.2 m²)
Length: 48 in. (1219 mm)
Width: 24 in. (610 mm)
Thickness: 1¼ in. (32 mm)

7 BOARDS

R5

Covers: 1024 ft.² (95.13 m²)
Length: 48 in. (1219 mm)
Width: 96 in. (2438 mm)
Thickness: 1 ¼ in. (32 mm)

FULL PALLET

R6

Covers: 48 ft.² (4.45 m²)
Length: 48 in. (1219 mm)
Width: 24 in. (610 mm)
Thickness: 1½ in. (38 mm)

6 BOARDS

R6

Covers: 672 ft.² (62.4 m²)
Length: 48 in. (1219 mm)
Width: 72 in. (1829 mm)
Thickness: 1 ½ in. (38 mm)

FULL PALLET

R6

Covers: 896 ft.² (273.1 m²)
Length: 48 in. (1219 mm)
Width: 96 in. (2438 mm)
Thickness: 1 ½ in. (38 mm)

FULL PALLET

R8

Covers: 40 ft.² (3.71 m²)
Length: 48 in. (1219 mm)
Width: 24 in. (610 mm)
Thickness: 2 in. (51 mm)

5 BOARDS

R8

Covers: 36 ft.² (3.34 m²)
Length: 48 in. (1219 mm)
Width: 36 in. (914 mm)
Thickness: 2 in. (51 mm)

3 BOARDS

COMFORTBOARD™ 80

Insulated Sheathing



How much
you'll need

R8

Covers: 640 ft.² (59.46 m²)
Length: 48 in. (1219 mm)
Width: 96 in. (2438 mm)
Thickness: 2 in. (51 mm)

FULL PALLET

R10

Covers: 384 ft.² (117 m²)
Length: 48 in. (1219 mm)
Width: 72 in. (1829 mm)
Thickness: 2.5 in. (63.5 mm)

FULL PALLET

R12

Covers: 24 ft.² (2.22 m²)
Length: 48 in. (1219 mm)
Width: 36 in. (914 mm)
Thickness: 3 in. (76 mm)

2 BOARDS

R12

Covers: 24 ft.² (2.22 m²)
Length: 48 in. (1219 mm)
Width: 24 in. (610 mm)
Thickness: 3 in. (76 mm)

3 BOARDS

R12

Covers: 480 ft.² (146.3 m²)
Length: 48 in. (1219 mm)
Width: 96 in. (2438 mm)
Thickness: 3 in. (76 mm)

FULL PALLET



ROCKWOOL

8024 Esquesing Line,
Milton, ON L9T 6W3

T: 1-800-265-6878 or 1-905-878-8474

rockwool.com

AFB®, CAVITYROCK®, COMFORTBATT®, CONROCK®, CURTAINROCK®, ROCKBOARD®, TOPROCK®, MONOBOARD®, ROXUL® are registered trademarks of the ROCKWOOL Group in USA and ROXUL Inc. in Canada. ROCKWOOL™, COMFORTBOARD™, FABROCK™, ROXUL SAFE™, ROCKWOOL PLUS™, and AFB evo™ are trademarks of the ROCKWOOL Group in USA and ROXUL Inc. in Canada. SAFE'n'SOUND® is a registered trademark used under license by Masonite Inc.



ROCKWOOL™