

**Levelwall provides what Professional Installers require and Homeowners demand!**

**HIGHER R-VALUE**

Levelwall Housewrap's R-value is 1600% higher than fabric roll housewraps. Levelwall reduces air infiltration and insulates wood studs, eliminating energy transfer points that diminish the comfort in the home. Levelwall also reduces noise transmission into the home.

**LAYS FLAT, BETTER FIT**

Once installed, Levelwall creates a level working surface providing a virtually perfect vinyl siding installation. A straight, flat surface maximizes the appearance and performance of vinyl siding.

**ADVANCED WALL SYSTEM**

Levelwall blocks the wood-to-wood thermal transfer of outside temperatures. By "sealing the envelope" with Levelwall, homes become more comfortable and energy efficient.

- **All weather workability**
- **Helpful Grid System speeds application**
- **Premium quality polystyrene foam core insulation plus a reflective aluminum facer provides a long lasting high R-value**

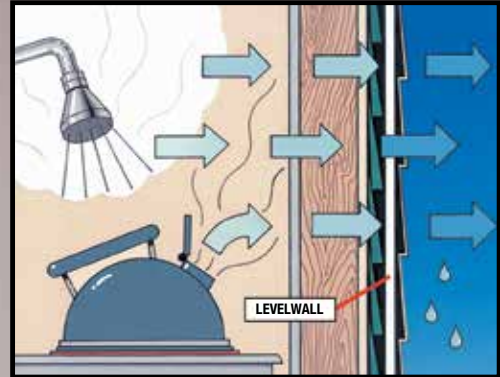


TABLE OF R-VALUES		
	R-Value	System*
<b>Thickness</b>	75°	75°
1/4"	0.96	2.95
3/8"	1.46	3.44
1/2"	2.00	3.98
3/4"	2.92	4.90
1"	3.85	5.83

\*To achieve system R-Value listed, an average 3/8" dead air space must be adjacent to the reflective surface.

# Levelwall . . . The Best Choice!

- Levelwall is the only housewrap product with the helpful Grid System making cutting around doors, windows and roof lines a breeze.
- Levelwall combines two crucial products necessary for an energy efficient home: additional insulation and an air infiltration barrier.
- There are over 1,000 breather holes in every square foot of Levelwall. These tiny holes enhance water vapor permeability without affecting rigidity. Many manufacturers skip this important step resulting in a product that traps moisture leading to mold or dry rot.
- Levelwall contains no harmful chemicals or toxic additives.

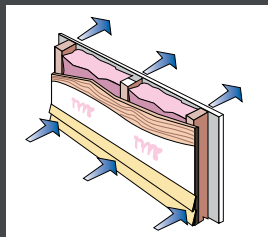


**MOLD  
RESISTANT**



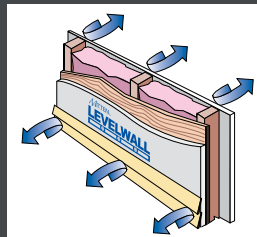
## Inferior Fabric Wall Wrap

Energy transfers through uninsulated studs.



## Levelwall Advanced Wall System

Levelwall Insulation over studs stops energy transfer.



**MITTEN**<sup>®</sup>  
par/by PLY GEM

