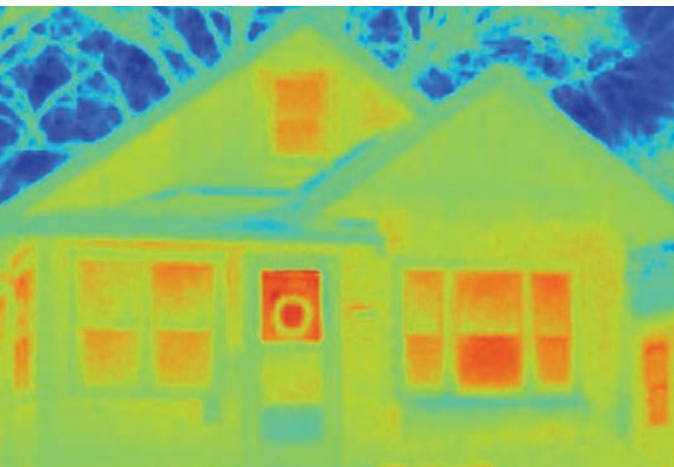




**Insulating Storm Windows  
SecurePRO™ Windows**

**make your  
windows  
better**





## Energy Efficiency

Adding insulating storm windows over existing windows greatly improves energy efficiency, keeping your home warmer in the winter and cooler in the summer. In the picture above, the red thermal imaging captures the heat lost through the window and door openings of many homes. Storm windows dramatically improve the efficiency of these openings.

## The Insulating Factor

Improved energy efficiency is just the beginning. Insulating storm windows seal out drafts and significantly reduce outside noise, providing an extra layer of protection.

## The Impact











Insulating storm windows mount over your existing window, either inside or outside your home, creating a thermal break between the existing window and storm window.



# Get a Faster Return on Your Investment

## More Savings with Low-E

- Cuts energy loss by up to 60%\* year round, saving up to \$35 per window annually
- Warmer in the winter, cooler in the summer
- UV protection for furniture and floors
- Department of Energy recognizes Low-E insulating storm windows as providing similar performance to that of total window replacement

	Standard Glass	Low-E Glass
<b>INSULATION</b>	 STANDARD CLEAR	 HIGH-PERFORMANCE
<b>GLASS STRENGTH</b>	 SINGLE STRENGTH	 DOUBLE STRENGTH
<b>UV PROTECTION</b>	 NO PROTECTION	 BLOCKS 60%
<b>ENERGY SAVINGS</b>	 UP TO 30%	 UP TO 60%
<b>PAY-BACK</b>	 5 TO 7 YEARS	 3 TO 5 YEARS

\* Results based on independent lab testing of Low-E window when applied over wood double-hung single glazed window. Actual energy savings may vary.



# Premium Series

EXTERIOR Energy Solutions

Formerly Gold Series



## PROTECTION

Double weather stripping provides superior seal and maximum air infiltration protection



## OUR STRONGEST FRAME

provides long term durability and performance



## EASY INSTALLATION

Remarkably easy to apply to the outside of your window

## TECHNICAL FEATURES

### Wind Resistance

- Built to withstand winds up to 90 mph
- Double wall frame creates an exceptionally tight fit
- Operating sash and finger pulls lock in place

### Air Infiltration Reduction

- Reduces air infiltration 4x the rate of our Performance window
- Interlocking sash adds stability and prevents bowing
- Bottom expander creates a tight fit (not available on slider window)
- Marine glazing for optimum seal

### Weather Seal

- Double weatherstrip on both sides of sash

### Warranty and Certification

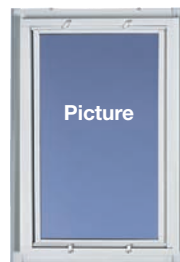
- Limited Lifetime Warranty for your peace of mind
- AAMA Certified\*

\* American Architectural Manufacturers Association – certified Double Hung 1/2 screen, up to 42" x 73", non flush mount applications

## Step 1 Choose your style



**L203, L203E**  
For use with single or double hung windows



**L503, L503E**  
For use with fixed windows



**L603, L603E**  
For use with slider and basement windows



**L623, L623E**  
For use with slider windows

### Optional Flush Mount

Expander surrounds the storm window, bringing the outside surface flush with the prime window casing for a smooth appearance

## Step 2 Measure your opening

Measure your opening and determine how you will mount the storm window. Learn how to measure on page 10.

## Step 3 Choose your color

White

Almond

Brown

Sandstone

## Step 4 Choose your glass – Clear or Low-E



### The Low-E Advantage



Keep rooms warmer in the winter by minimizing heat loss.



Keep rooms cooler in the summer by reflecting the sun's heat.



U.S. Department of Energy recommends Low-E storm windows to improve energy efficiency.





# Performance Series

EXTERIOR Energy Solutions

Formerly Bronze Series



## PROTECTION

Marine glazing for optimum seal and weatherstripping for reduced air infiltration



## EASY INSTALLATION

Remarkably easy to apply to the outside of your window

## TECHNICAL FEATURES

### Air Infiltration Reduction

- Bottom expander creates a tight fit
- Marine glazing for optimum seal

### Weather Seal

- Woolpile weatherstrip adds thermal barrier

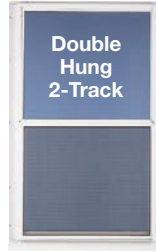
### Frame Strength

- Maintenance-free heavy duty aluminum

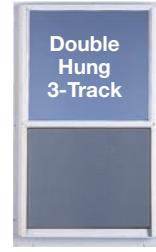
### Warranty

- 10-Year Limited Warranty

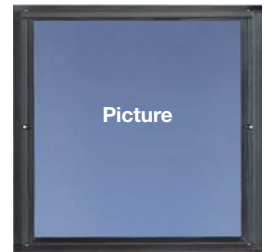
## Step 1 Choose your style



**L201, L201E**  
For use with single or double hung windows



**L301, L301E**  
For use with double hung windows providing top or bottom ventilation



**L501, L501E**  
For use with fixed windows

## Step 2 Measure your opening

Measure your opening and determine how you will mount the storm window. Learn how to measure on page 10.

## Step 3 Choose your color

White

Brown

Mill

## Step 4 Choose your glass – Clear or Low-E



### The Low-E Advantage



Keep rooms warmer in the winter by minimizing heat loss.



Keep rooms cooler in the summer by reflecting the sun's heat.



U.S. Department of Energy recommends Low-E storm windows to improve energy efficiency.





### SECURITY

Tough stainless steel wire mesh  
Tamper-proof one-way screws



### INSULATION

Energy performance glass panels (optional)



### VENTILATION

Lets in fresh air



### SAFETY

Emergency release system



### EASY INSTALLATION

Remarkably easy to apply to the outside  
of your window

## TECHNICAL FEATURES

### Security

- Stainless steel wire mesh screen provides break-in protection. Tested to surpass 1,000 pounds of force
- Screen is compressed and secured with 15,000 pounds of force in heavy-duty aluminum frame
- Powder coated .028" diameter wire with 12 weaves per square inch
- Meets highest level of SMA impact force standards



### Protection

- Safe, easy-to-use emergency escape release system
- Screen mesh helps filter out harmful sun rays to keep your home cool and protect against fading

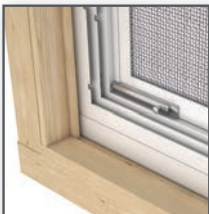


### Insulation

- Self Storing glass panels for added energy efficiency

### Installation

- Easily installs over existing window
- Overlap mount for the best protection
- 4 tamper-proof, 1-way installation screws provided



SecurePro™ products enhance architectural appeal without compromising home design. Unlike traditional security bars and grills, our innovative security screen allows for unobstructed views.

## Step 1. Choose your style

Available in White



## Step 2. Measure your opening

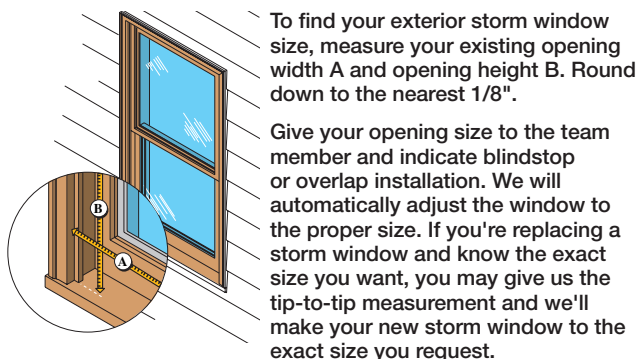
Measure your opening and determine how you will mount the SecurePro panel. (Outside mount is recommended). Learn how to measure on page 10.

**SecurePRO™**  
Protection on all fronts.

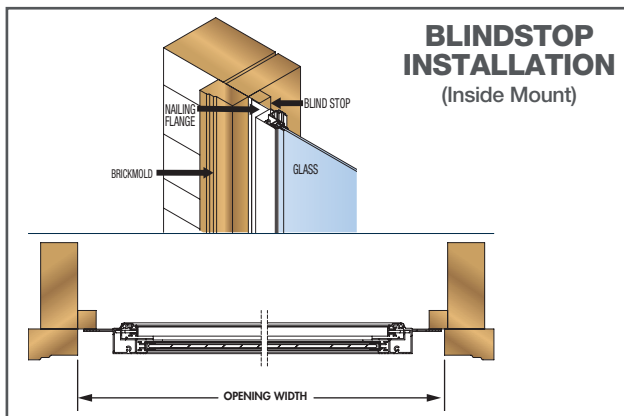


# Storm Windows

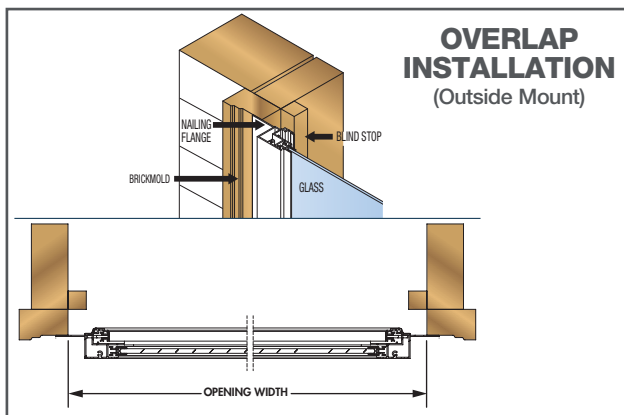
One way to measure  
Two ways to mount



### BLINDSTOP INSTALLATION (Inside Mount)



### OVERLAP INSTALLATION (Outside Mount)



**insider** TM STORM WINDOWS

Mounts inside your home to block drafts, outside noise and increase energy efficiency.



#### CONVENIENCE

easy to remove and clean



#### EASY INSTALLATION

remarkably easy to install and remove any time of year

#### The insider Advantage

- Reduces drafts by up to 48%
- Significantly reduces outside noise
- Improves U-factor of your existing window by up to 50%
- Easily installs in bedrooms, living spaces, second story rooms, historical homes
- Slim mounting frame for a clear view outside

### 1900, 1900E Fits multiple styles



For use with single or double hung windows



For use with slider and basement windows



For use with fixed windows

### Step 1 Measure your opening

Measure your opening width at the top, center, and bottom, and use the smallest measurement. Measure your opening height and use the smallest measurement. The insider window will be automatically sized to fit the opening.



1-inch depth is recommended for installation. Actual window depth equals 5/8". Maximum tolerance for out of square openings is 1/8".

### Step 2 Choose your color



### Step 3 Choose your glass – Clear or Low-E



#### The Low-E Advantage



Keep rooms warmer in the winter by minimizing heat loss.



Keep rooms cooler in the summer by reflecting the sun's heat.



U.S. Department of Energy recommends Low-E storm windows to improve energy efficiency.

# More energy saving solutions



## Patio Storm Door

- Installs easily over your existing patio door
- Reduces heat loss in the winter
- Minimizes air infiltration
- Provides insulation and energy savings
- Low-E glass or clear glass
- Available in standard and custom sizes
- White and brown

## Sidelite Storm Panel

- Elegant protection for sidelites or transoms
- Available in two styles
- Overlap and inside mount options
- Low-E glass or clear glass
- Available in standard and custom sizes
- Colors to match your storm door

## Specialty Storm Window

- Unique shapes including circular and octagon
- Custom made to your specifications

## Commercial insider™ Storm Window

- Fits large commercial, historical, residential or municipal windows
- Select styles up to 24-feet in width or height



**Homeowner Helpline: 1-888-483-3768**  
**[www.LARSONstormwindows.com](http://www.LARSONstormwindows.com)**  
**[StormWindowsSaveMoney.com](http://StormWindowsSaveMoney.com)**

\* Results based on independent lab testing of Low-E window when applied over wood double-hung single glazed window. Actual energy savings may vary.

Larson Manufacturing Company, Brookings, South Dakota, USA. LARSON® reserves the right to alter or discontinue any model specification or price without notice. Window colors shown are approximate; actual color may vary. Is your window near a door? a tub? the floor? Check your local building codes for tempered glass requirements. 0951280 11.16