


orb|60TH

MOBILITY PLANNING MASTERCLASS





**ARRB IS PLEASED TO HOST A
SERIES OF ONE-DAY
MASTERCLASSES
ON SUSTAINABLE URBAN
MOBILITY PLANNING (SUMP),
IN COLLABORATION WITH
ROAD SOLUTIONS AND
DTV CAPACITY BUILDING.**

SUSTAINABLE URBAN MOBILITY PLANNING MASTERCLASS

DATE TBC

Sydney TBC
Melbourne TBC
Brisbane TBC
Perth TBC

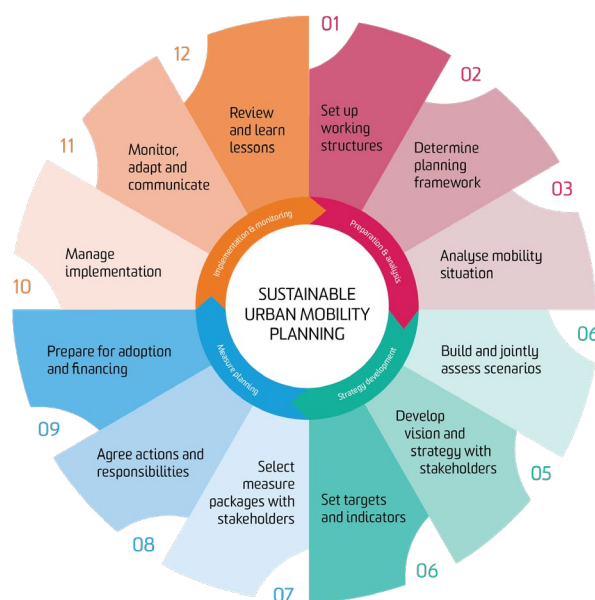
Each masterclass will introduce the key elements of SUMP and how that will translate into value for your city and projects.

Outline

- Sustainable mobility planning in Australia
- Introduction to the SUMP method and key mechanisms
- City examples and cases
- SUMP opportunities for road safety, climate change and accessibility
- Concluding discussion and take-home messages

The method fosters a balanced development of all relevant transport modes, while encouraging a shift towards more sustainable modes. The plan puts forward an integrated set of technical, infrastructure, policy-based, and soft measures to improve performance and cost-effectiveness.

Many cities in Europe and beyond have successfully adopted the method in creating better and attractive cities to live, work and visit.



The 12 Steps of Sustainable Urban Mobility Planning (SUMP 2.0)

Why SUMP?

Australia's strong population growth coupled with the increasing sprawl of our cities is impacting community health, liveability, as well as transport systems and increasing congestion. With over 85% of Australia's population living in urban areas, finding relevant solutions is needed in order to unlock the full economic potential of current policies and trends.

The Sustainable Urban Mobility Planning (SUMP) approach is well established in Europe, is seen as best practice and has been highly successful in delivering solutions to tackle current urban challenges: severe congestion, traffic deaths and injuries, poor air quality, noise emissions and high levels of CO2 emissions.

Benefits

The SUMP method provides benefits for all actors from policy making to project delivery:

- Expand project budgets through cross sectoral cooperation
- Better return on investments on city projects through a holistic approach
- Increase road safety through planning and design
- Raise the success of city plans and projects, through a coherent approach covering all modes
- Reduce delays in planning and project delivery caused by uninformed stakeholder groups
- Create better, more attractive and happier cities.

Key Elements of SUMP

The development and implementation of a SUMP follows an integrated approach with a high level of co-operation and consultation between the different authorities and stakeholders, e.g. citizens, as well as representatives of civil society and economic actors. This is to ensure acceptance and support for both the plan as the measures that will be developed and implemented. Key elements are

- Plan for sustainable mobility in the entire 'functional city'
- Cooperate across institutional boundaries
- Involve citizens and stakeholders
- Assess current and future performance
- Define a long-term and clear implementation plan
- Develop all transport modes in an integrated manner
- Arrange for monitoring and evaluation
- Quality assurance
- SUMP would typically address the following themes and treatments: (a) Public transport, (b) Walking and cycling, (c) Intermodality, (d) Urban road safety, (e) Road transport (flowing and stationary), (f) Urban logistics, (g) Mobility management, (h) Intelligent Transport Systems.

Who Should Attend?

The SUMP approach provides benefits for all actors in the policy cycle. This masterclass is relevant for:

- Policy and decision makers
- City councillors
- Traffic engineers and road safety experts
- Urban planners and designers
- Those involved in developing/implementing Local Area Traffic Management Plans, Bicycle Strategy, Pedestrian Strategy, Road Safety Strategy

FEES
PRICE PP: TBC

Registration fee includes morning and afternoon refreshments and lunch. All prices are quoted in Australian Dollars.

PRESENTERS



Teije Gorris
DTV Capacity Building (Netherlands)

Teije has extensive experience in Sustainable Urban Mobility Planning. He chaired the European Commission's SUMP platform, guided and trained European cities in adopting the method and developed practical implementation strategies. Teije also has extensive experience in national and international consultancy and research projects on the topics of EU policy development, cycling infrastructure planning – including work in Victoria - and transport innovation. He is now applying his vast experience in delivering hands-on training programmes for mobility and transport professionals to enable them to achieving their sustainable mobility objectives more effectively.

DTV Capacity Building is a label of Netherlands based DTV Consultants. DTV Capacity Building has over 30 years of experience in providing training courses for transport planning and traffic engineering professionals. DTV Capacity Building has a proven track record in teaching professionals in such way that they can apply to their own local situation. Learn today, apply tomorrow!

ARRB PRESENTERS



Daniel Mustata
Principal Road Safety Engineer, Road Solutions

Daniel Mustata is Principal Road Safety Engineer at Road Solutions in Melbourne. Road Solutions delivers road safety services such as strategic advice, design, audits, safe system assessments, risk management, capacity building and innovative road solutions. Daniel's 20 years of experience in the engineering industry.



Dr Clarissa Han
Victoria, Sustainability and Resilience
National Leader



Natalie Lockwood
Western Australia, State Technical Leader



Matthew Bereni
Queensland, State Technical Leader



David McTiernan
New South Wales, State Technical Leader



Hafez Alavi
Director Transport Safety, Road Solutions

Hafez Alavi (BSc, MEng, PhD) has over 18 years of experience in the fields of traffic engineering, transport planning, road safety and injury prevention in the public and private sectors and the academia. Previously TAC's Director Safe System Road Infrastructure Program, he is well-respected transport safety experts, and a regular guest speaker at national and international road and transport conferences and workshops.



orb|60TH

CONTACT

80A TURNER ST.
PORT MELBOURNE, VIC 3207
P: +61 3 9881 1555
E: SUSTAINABILITY@ARRB.COM.AU

