

DIMENSIONS FOR OVERALL HEIGHT AND LENGTH ARE APPROXIMATE
 OVERALL HEIGHT = 106.5"
 OVERALL WIDTH WITH RUB
 RAILS & FENDERETTES = 98"

(7) WHELEN 900 SUPER LED WARNING LIGHTS
 RED/RED/RED/WHITE/RED/RED/RED
 WITH CLEAR LENSES

(5) TECNIQ S330 AMBER
 MINI-LED MARKER LIGHTS

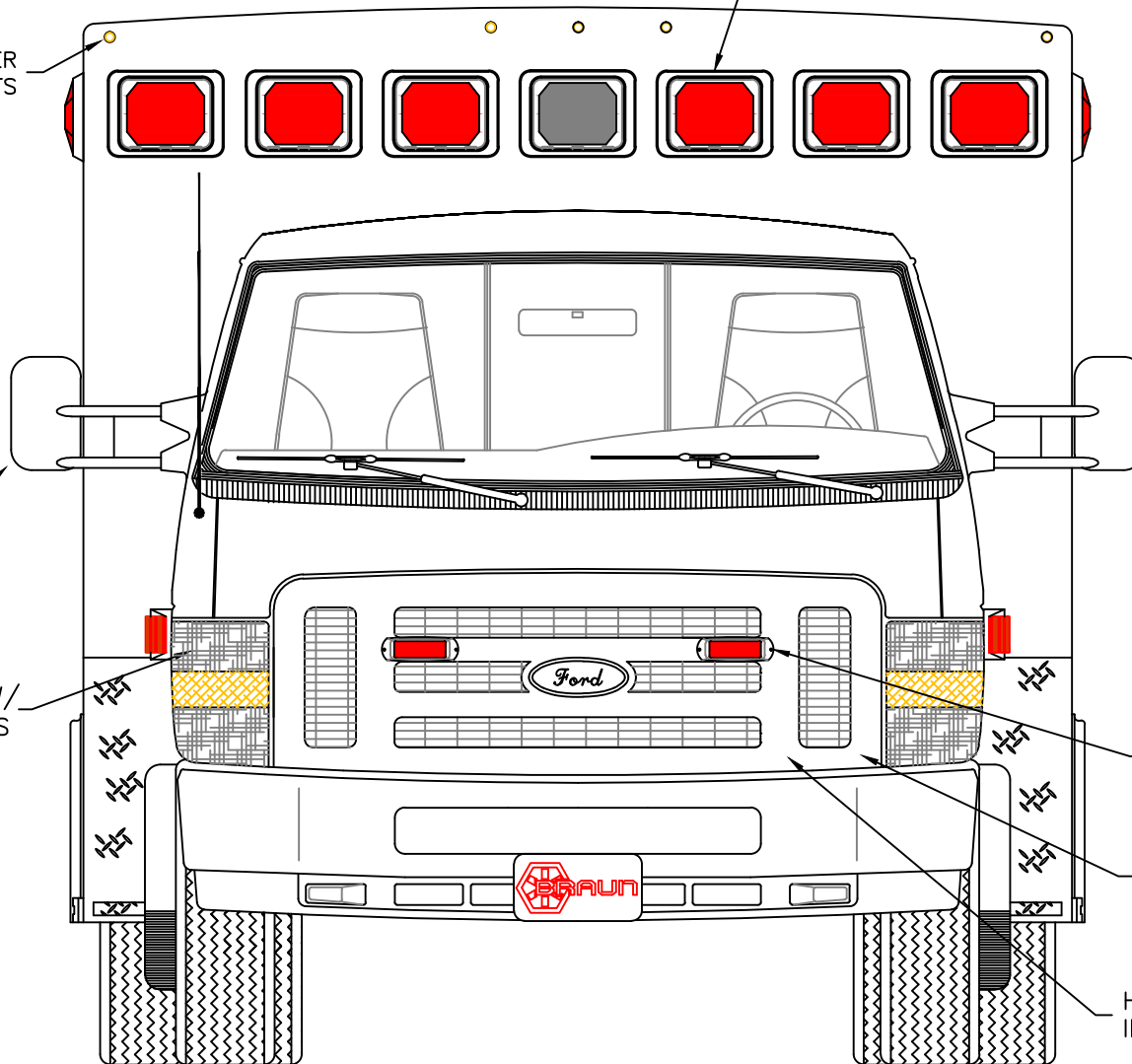
OEM POWER
 ADJUSTABLE
 MIRRORS

FLASHING HEADLIGHTS W/
 DAYTIME RUNNING LIGHTS

(2) WHELEN 500 SERIES
 RED SUPER LED GRILLE
 LIGHTS IN CPI HOUSINGS
 WITH CLEAR LENSES

(2) WHELEN SA315 SERIES
 SIREN SPEAKERS BEHIND
 GRILLE AREA

HIDDEN UNLOCK SWITCH
 IN GRILLE AREA



THIS DRAWING IS FOR REPRESENTATIONAL PURPOSES ONLY. DETAILS ARE CONCEPTUAL AND ARE SUBJECT TO CHANGE DURING DESIGN AND CONSTRUCTION
 DIMENSIONS ARE APPROXIMATE UNLESS NOTED OTHERWISE TO MEET A SPECIFIC CUSTOMER NEED.

BRAUN
 CHIEF XL



2019 FRONT EXTERIOR VIEW
 CHIEF XL-III/FORD E-450 CHASSIS-GAS ENGINE

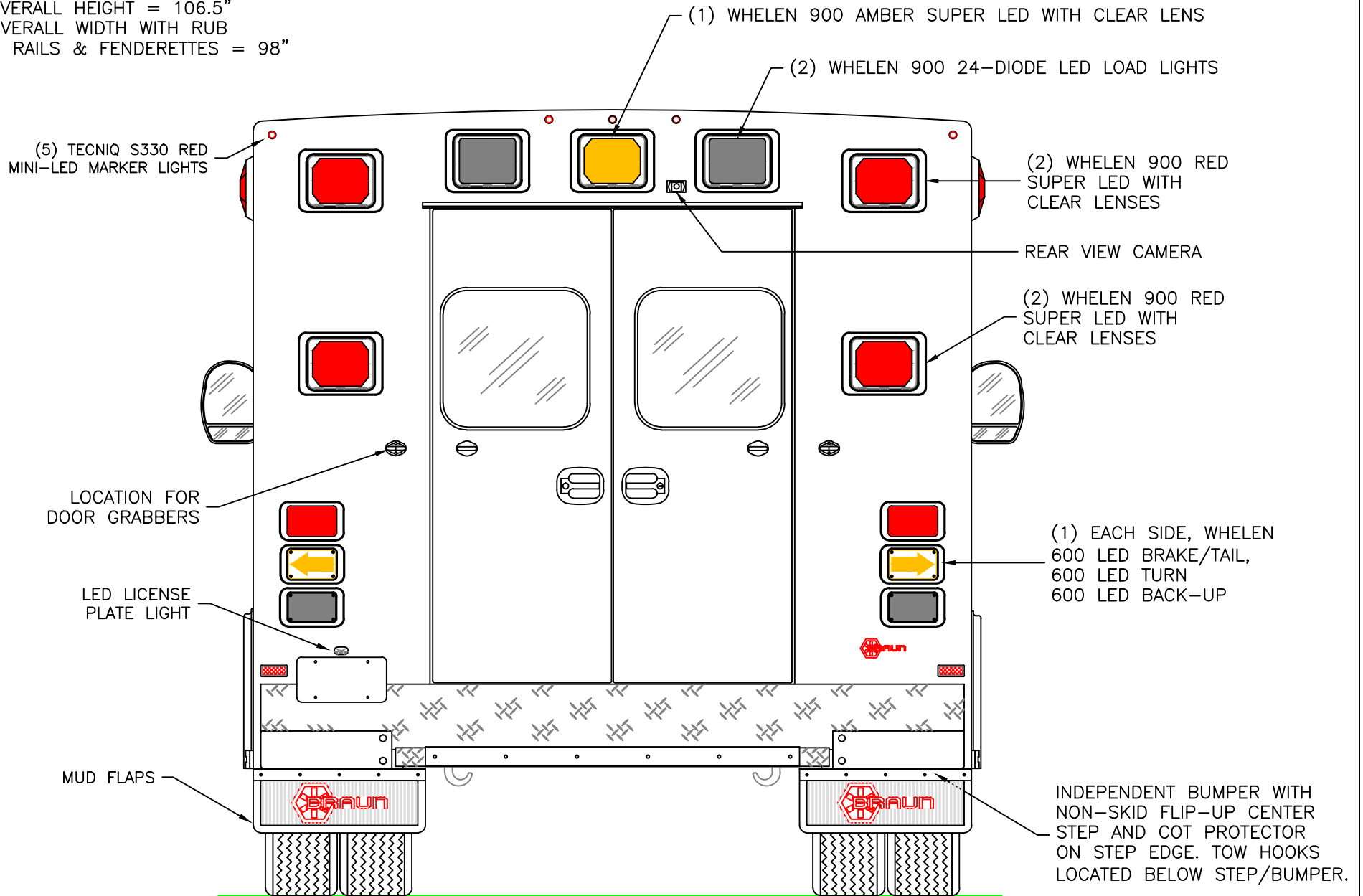
DATE:
 8-3-18
 DWG.
 AAB

DRAWING NO.
 REV.
 NR
 CHIEFXL-1

APPROVAL SIGNATURE:

DATE:

DIMENSIONS FOR OVERALL HEIGHT AND LENGTH ARE APPROXIMATE
 OVERALL HEIGHT = 106.5"
 OVERALL WIDTH WITH RUB
 RAILS & FENDERETTES = 98"



THIS DRAWING IS FOR REPRESENTATIONAL PURPOSES ONLY. DETAILS ARE CONCEPTUAL AND ARE SUBJECT TO CHANGE DURING DESIGN AND CONSTRUCTION
 DIMENSIONS ARE APPROXIMATE UNLESS NOTED OTHERWISE TO MEET A SPECIFIC CUSTOMER NEED.

BRAUN
 CHIEF XL



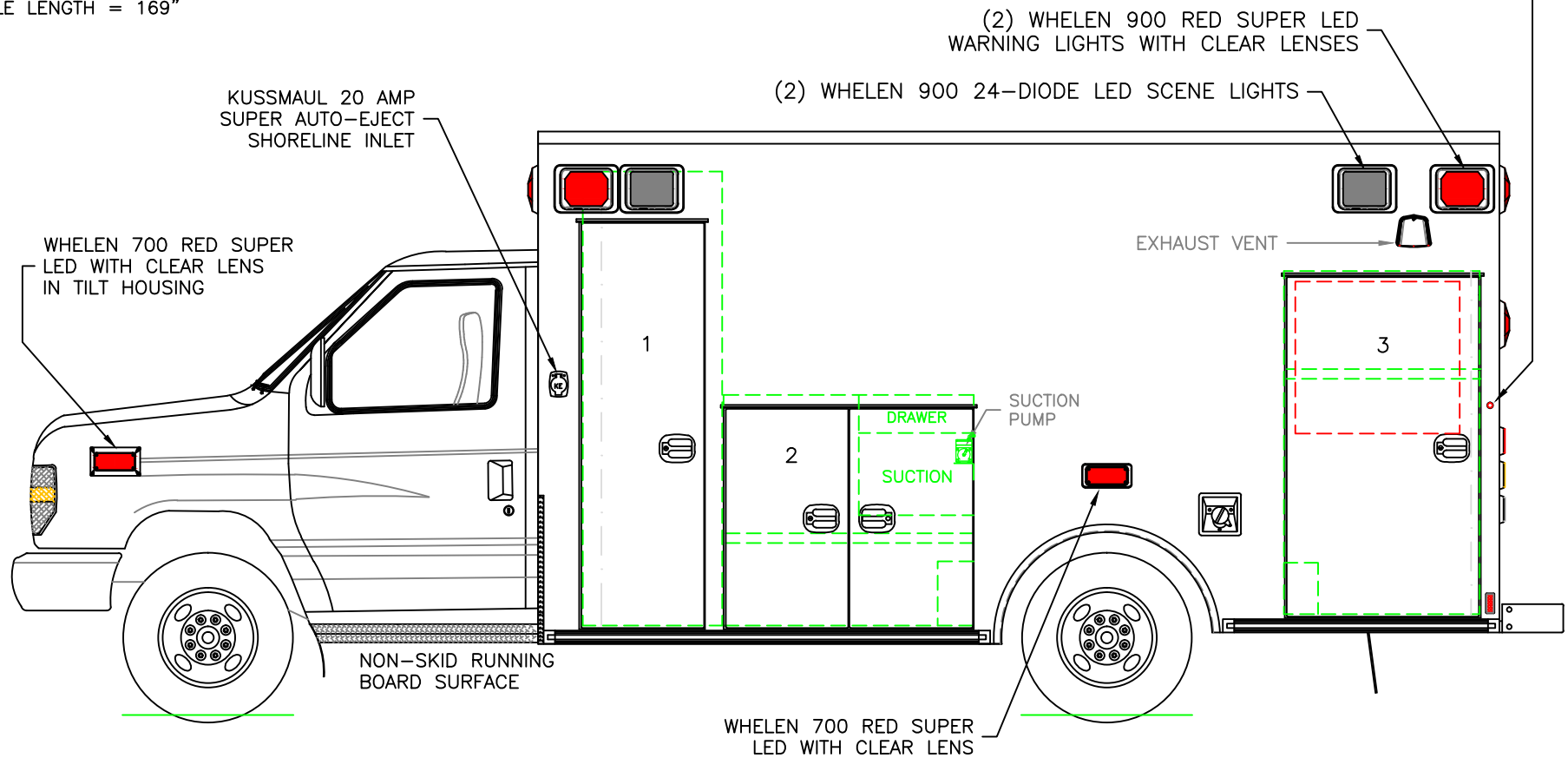
2019 REAR EXTERIOR VIEW
 CHIEF XL-III/FORD E-450 CHASSIS

DATE:
 8-3-18
 DWG.
 AAB

DRAWING NO.
 CHIEFXL-2
 REV.
 NR

DIMENSIONS FOR OVERALL HEIGHT AND LENGTH ARE APPROXIMATE
 OVERALL HEIGHT = 106.5"
 OVERALL LENGTH = 272.75"
 MODULE LENGTH = 169"

TECNIQ S330 RED MINI-LED MARKER LIGHT TO ALSO FLASH WITH TURN SIGNAL



COMPARTMENT
O.S.S #1

CLEAR OPENING: 70.00h x 18.25w
 INSIDE DIM'S.: 79.75h x 24.50w x 20.75d
 BACKBOARD/SCOOP STORAGE

O.S.S #2

CLEAR OPENING: 37.50h x 38.50w
 INSIDE DIM'S.: 40.50h x 44.00w x 20.75d
 (1) ADJUSTABLE SHELF

O.S.S #3

CLEAR OPENING: 58.50h x 30.75w
 INSIDE DIM'S.: 60.25h x 34.50w x 20.75d
 INSIDE/OUTSIDE ACCESS
 (1) ADJUSTABLE SHELF

THIS DRAWING IS FOR REPRESENTATIONAL PURPOSES ONLY. DETAILS ARE CONCEPTUAL AND ARE SUBJECT TO CHANGE DURING DESIGN AND CONSTRUCTION
 DIMENSIONS ARE APPROXIMATE UNLESS NOTED OTHERWISE TO MEET A SPECIFIC CUSTOMER NEED.

BRAUN
CHIEF XL



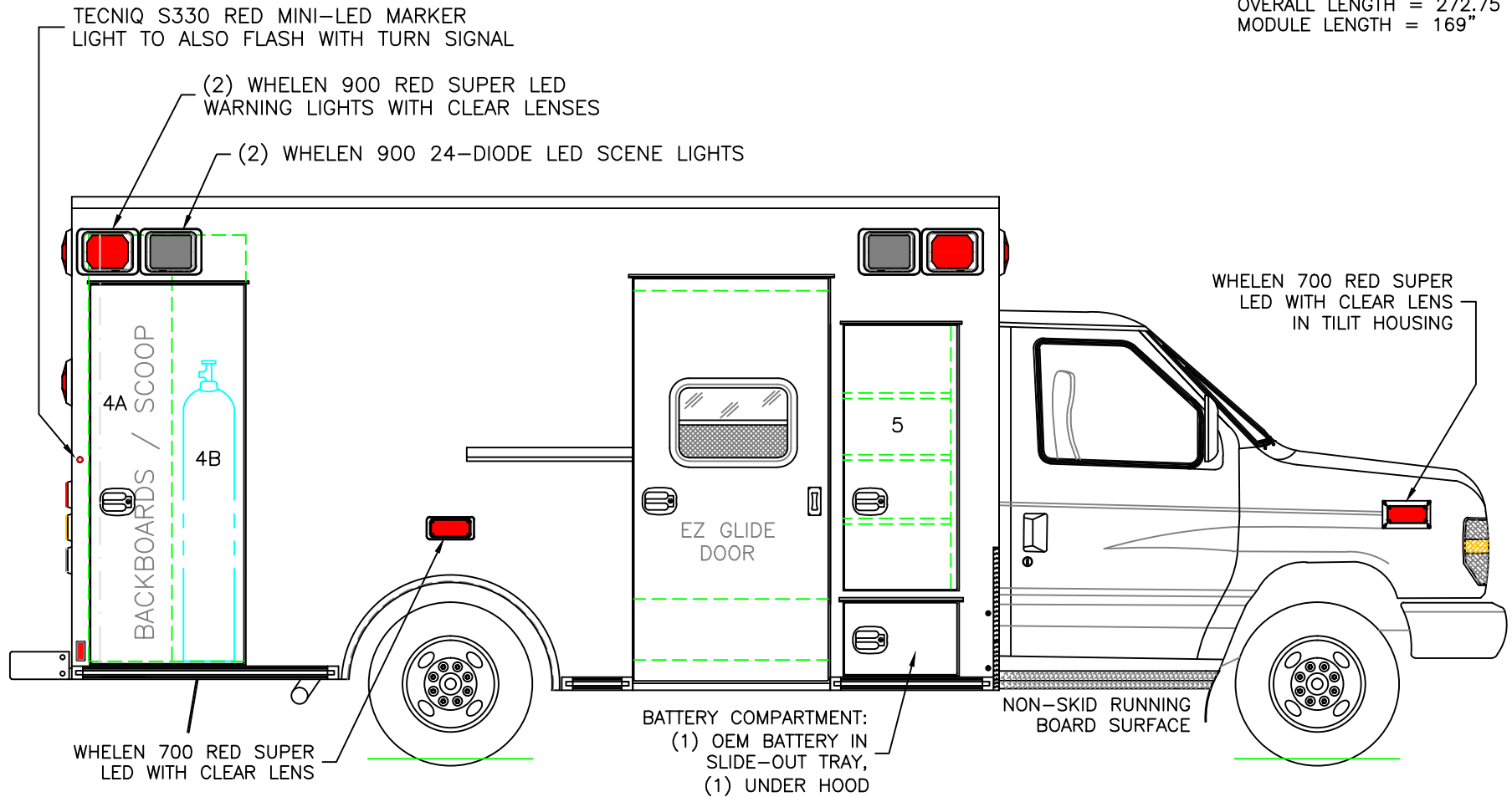
2019 STREETSIDE EXTERIOR VIEW
 CHIEF XL-III/FORD E-450 CHASSIS

DATE:
8-3-18

DWG. AAB REV. NR

DRAWING NO.
CHIEFXL-3

DIMENSIONS FOR OVERALL HEIGHT AND LENGTH ARE APPROXIMATE
 OVERALL HEIGHT = 106.5"
 OVERALL LENGTH = 272.75"
 MODULE LENGTH = 169"



COMPARTMENT

O.S.S #4

CLEAR OPENING: 68.00h x 24.75w
 INSIDE DIM'S. 4A: 77.75h x 15.00w x 20.75d
 BACKBOARD/SCOOP STORAGE

INSIDE DIM'S. 4B: 77.75h x 13.50w x 12.00d
 MAIN OXYGEN STORAGE

O.S.S #5

CLEAR OPENING: 46.75h x 17.25w
 INSIDE DIM'S. 5: SEE PARTITION INTERIOR VIEW
 INSIDE/OUTSIDE ACCESS WITH (3) ADJUSTABLE SHELVES

THIS DRAWING IS FOR REPRESENTATIONAL PURPOSES ONLY. DETAILS ARE CONCEPTUAL AND ARE SUBJECT TO CHANGE DURING DESIGN AND CONSTRUCTION
 DIMENSIONS ARE APPROXIMATE UNLESS NOTED OTHERWISE TO MEET A SPECIFIC CUSTOMER NEED.

BRAUN
 CHIEF XL

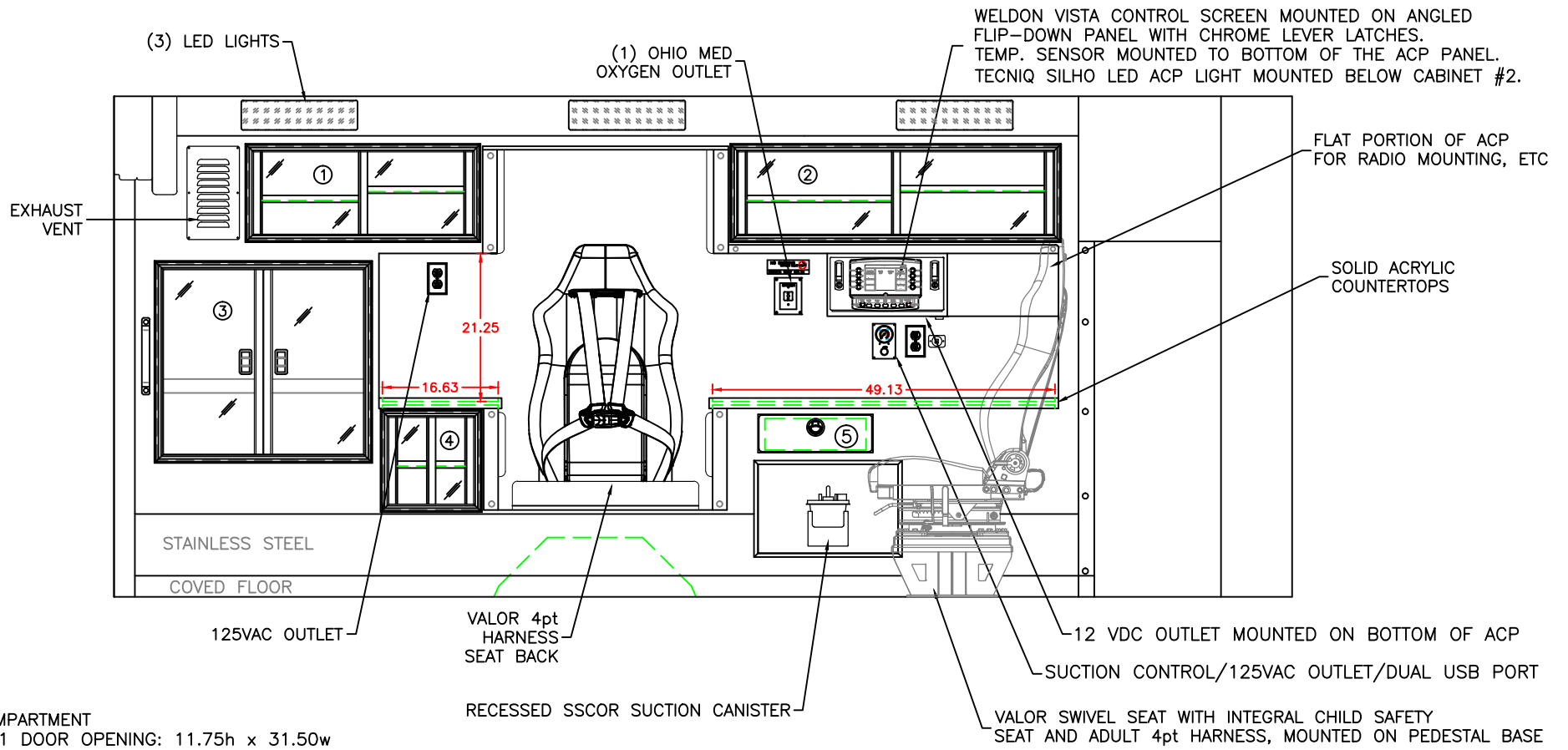


2019 CURBSIDE EXTERIOR VIEW
 CHIEF XL-III/FORD E-450 CHASSIS

DATE:
 8-3-18

DWG. AAB REV. NR

DRAWING NO.
 CHIEFXL-4



COMPARTMENT

#1 DOOR OPENING: 11.75h x 31.50w
 INSIDE DIMS: 13.25h x 33.00w x 17.25d
 (1) ADJ SHELF EACH SIDE OF CENTER DIVIDER
 SLIDING POLYCARBONATE DOORS
 TOTAL CABINET WEIGHT RATING = 25 lbs.

#2 DOOR OPENING: 11.75h x 45.00w
 INSIDE DIMS: 13.25h x 46.50w x 17.25d
 (1) ADJ SHELF EACH SIDE OF CENTER DIVIDER
 SLIDING POLYCARBONATE DOORS
 TOTAL CABINET WEIGHT RATING = 25 lbs.

#3 DOOR OPENING: 26.50h x 28.75w
 INSIDE DIMS: O.S.S. #3
 HINGED POLYCARBONATE DOORS WITH FULL LENGTH HANDLES
 CENTER SQUEEZE LATCHES
 TOTAL CABINET WEIGHT RATING = 40 lbs.

#4 DOOR OPENING: 12.50h x 12.25w
 INSIDE DIMS: 14.00h x 13.75w x 17.25d
 (1) ADJUSTABLE SHELF
 SLIDING POLYCARBONATE DOORS
 TOTAL CABINET WEIGHT RATING = 15 lbs.

#5 PULL-OUT DRAWER WITH HINGED ACRYLIC WRITING SURFACE
 INSIDE DIMS: 4.50h x 14.50w x 13.25d
 LOCKING STAINLESS STEEL FLUSH PULL LATCH
 TOTAL DRAWER WEIGHT RATING = 10 lbs.

CABINETS TO BE ALUMINUM

THIS DRAWING IS FOR REPRESENTATIONAL PURPOSES ONLY. DETAILS ARE CONCEPTUAL AND ARE SUBJECT TO CHANGE DURING DESIGN AND CONSTRUCTION
 DIMENSIONS ARE APPROXIMATE UNLESS NOTED OTHERWISE TO MEET A SPECIFIC CUSTOMER NEED.

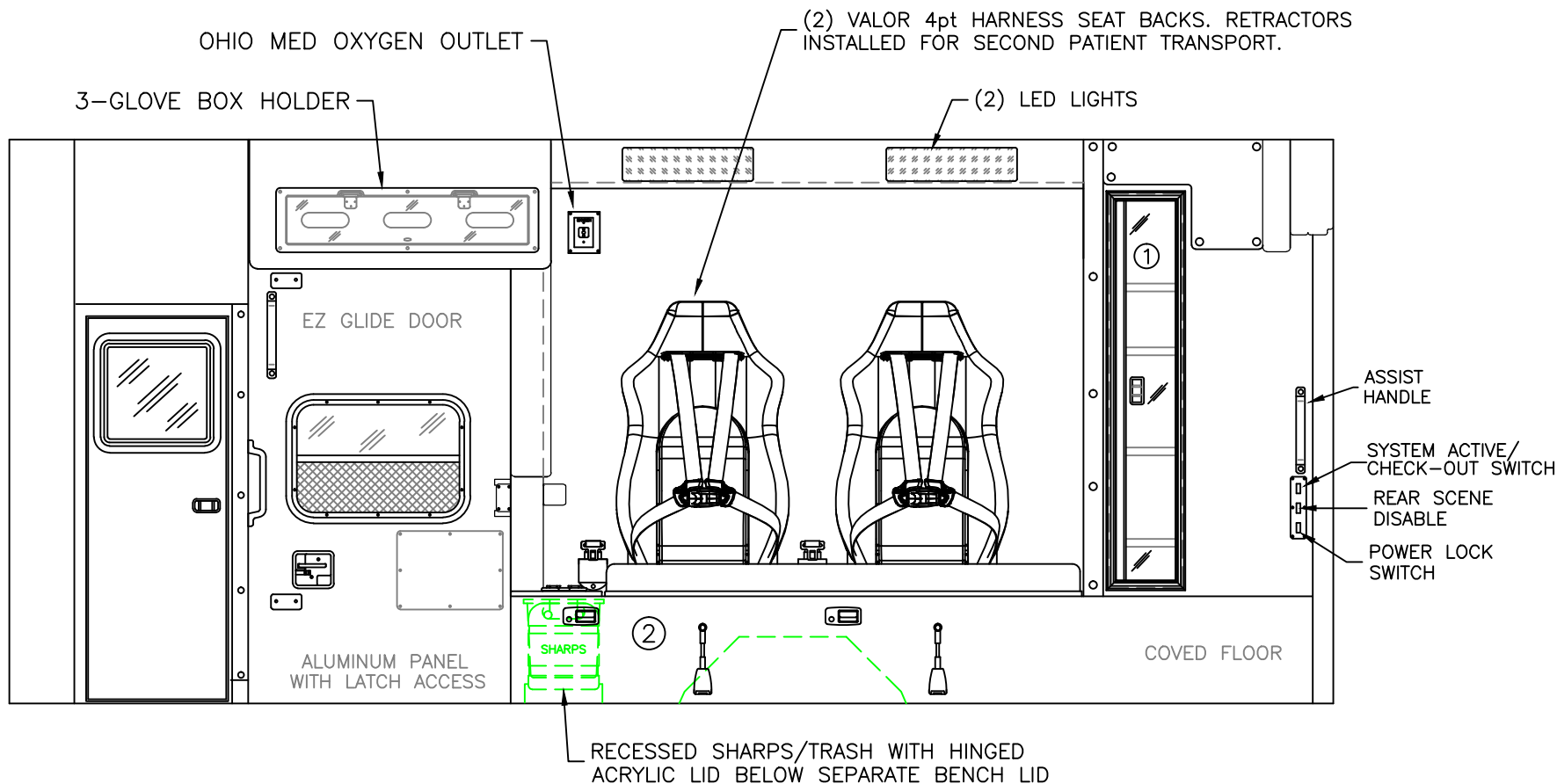
BRAUN
 CHIEF XL



2019 STREETSIDE INTERIOR VIEW
 CHIEF XL-III

DATE:
 8-3-18
 DWG. AAB REV. NR

DRAWING NO.
 CHIEFXL-5



COMPARTMENT

#1 DOOR OPENING: 48.00h x 7.25w
 INSIDE DIMS: 50.00h x 11.50w x 7.50d
 HINGED POLYCARBONATE DOOR WITH FULL LENGTH HANDLE
 CENTER SQUEEZE LATCH
 (4) ADJUSTABLE SHELVES
 TOTAL CABINET WEIGHT RATING = 25 lbs.

#2 INSIDE DIM'S: 14.25h x 72.00w x 21.00d

CABINETS TO BE ALUMINUM

THIS DRAWING IS FOR REPRESENTATIONAL PURPOSES ONLY. DETAILS ARE CONCEPTUAL AND ARE SUBJECT TO CHANGE DURING DESIGN AND CONSTRUCTION
 DIMENSIONS ARE APPROXIMATE UNLESS NOTED OTHERWISE TO MEET A SPECIFIC CUSTOMER NEED.

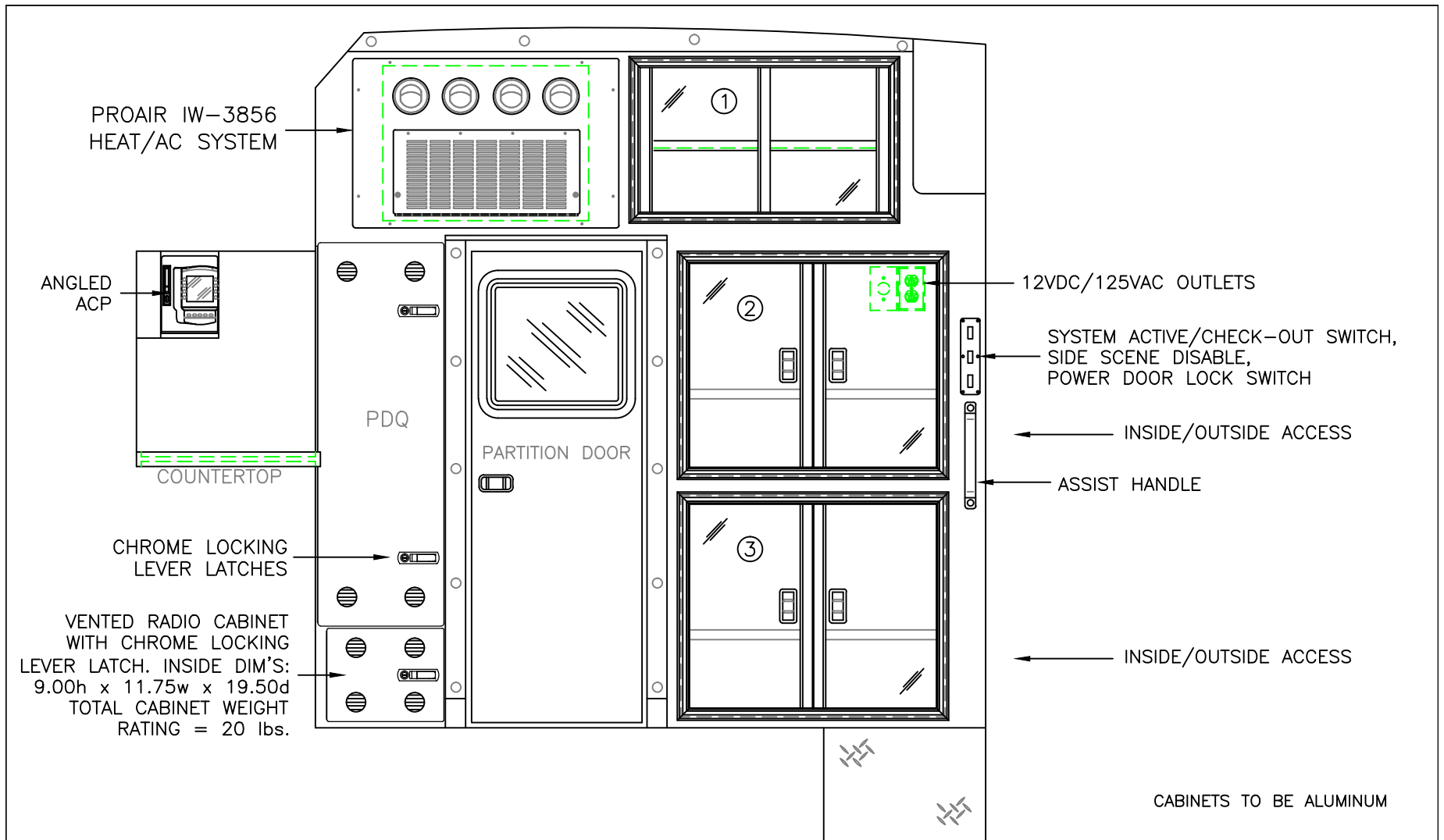
BRAUN
 CHIEF XL



2019 CURBSIDE INTERIOR VIEW
 CHIEF XL-III

DATE:
 8-3-18
 DWG. AAB

REV. NR
 DRAWING NO.
 CHIEFXL-6



COMPARTMENT

#1 DOOR OPENING: 15.00h x 25.75w
 INSIDE DIMS: 16.50h x 27.25w x 17.00d
 (1) ADJUSTABLE SHELF
 SLIDING POLYCARBONATE DOORS
 TOTAL CABINET WEIGHT RATING = 25 lbs.

#2 & #3 DOOR OPENINGS: 21.25h x 25.75w
 INSIDE DIMS: 24.75h x 31.50w x 20.75d
 HINGED POLYCARBONATE DOORS WITH FULL LENGTH HANDLES
 CENTER SQUEEZE LATCHES
 (1) ADJUSTABLE SHELF PER COMPARTMENT
 TOTAL CABINET WEIGHT RATING = 60 lbs. EACH

THIS DRAWING IS FOR REPRESENTATIONAL PURPOSES ONLY. DETAILS ARE CONCEPTUAL AND ARE SUBJECT TO CHANGE DURING DESIGN AND CONSTRUCTION DIMENSIONS ARE APPROXIMATE UNLESS NOTED OTHERWISE TO MEET A SPECIFIC CUSTOMER NEED.

BRAUN
CHIEF XL



2019 PARTITION INTERIOR VIEW
CHIEF XL-III

DATE:
8-3-18
DWG.
AAB

REV.
NR

DRAWING NO.
CHIEFXL-7

OXYGEN BYPASS

OXYGEN ACCESS

ALUMINUM PANEL
WITH LATCH ACCESS

ALUMINUM PANEL
WITH LATCH ACCESS

RED/WHITE REFLECTIVE STRIP
ON INSIDE OF EACH DOOR

THIS DRAWING IS FOR REPRESENTATIONAL PURPOSES ONLY. DETAILS ARE CONCEPTUAL AND ARE SUBJECT TO CHANGE DURING DESIGN AND CONSTRUCTION DIMENSIONS ARE APPROXIMATE UNLESS NOTED OTHERWISE TO MEET A SPECIFIC CUSTOMER NEED.

BRAUN
CHIEF XL



2019 REAR INTERIOR VIEW
CHIEF XL-III

1:12

DATE:	8-3-18
DWG.	AAB NR
REV.	

DRAWING NO.	CHIEFXL-8
-------------	-----------

RECESSED SHARPS/TRASH WITH HINGED
ACRYLIC LID BELOW SEPARATE BENCH LID

(8) LED
DOME LIGHTS

OXYGEN STORAGE

BACKBOARDS
SCOOP

96" GRAB RAIL

PDQ
CAB'T

BACKBOARDS
SCOOP

ACP PROFILE

 = (2) RECESSED CEILING IV HANGER LOCATIONS

 = (1) CEILING OXYGEN OUTLET

* (2) ANTENNA BASES LOCATED OUTBOARD OF
DOME LIGHTS WITH COAX SERVICE LOOP

96" FERNO STAT-TRAC CENTER MOUNT COT HARDWARE

MODULE WIDTH = 96"
MODULE LENGTH = 169"
MODULE HEAD ROOM = 72"

THIS DRAWING IS FOR REPRESENTATIONAL PURPOSES ONLY. DETAILS ARE CONCEPTUAL AND ARE SUBJECT TO CHANGE DURING DESIGN AND CONSTRUCTION DIMENSIONS ARE APPROXIMATE UNLESS NOTED OTHERWISE TO MEET A SPECIFIC CUSTOMER NEED.

BRAUN
CHIEF XL



2019 FLOOR INTERIOR VIEW
CHIEF XL-III

DATE: 8-3-18	DRAWING NO.
DWG. AAB	REV. NR

DRAWING NO.
CHIEFXL-9