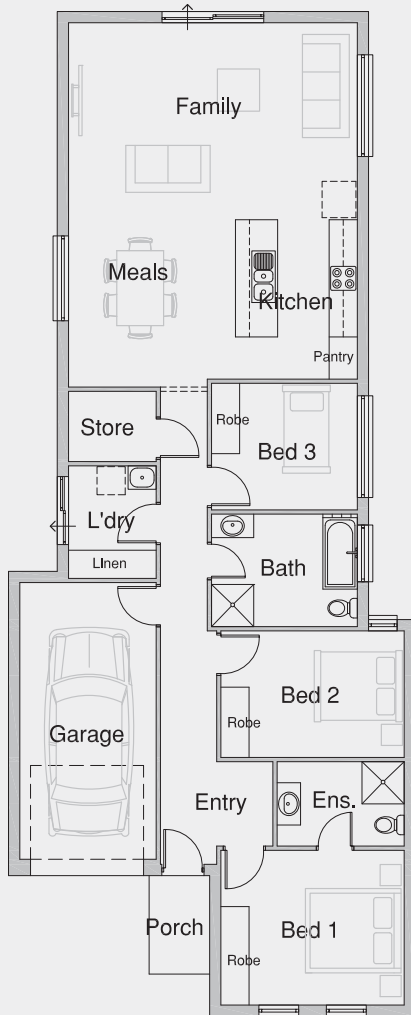


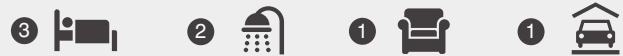


# LF 150: HOUSE & LAND PACKAGE



Lot 106 Langman Grove,  
Felixstow SA

Land Agent: Ouwens Casserly  
Land Area: 258m<sup>2</sup>



## INCLUDES

- Fixed Site Costs - 700mm Deep Footings
- Developer Encumbrances
- Classic Inclusions
- Split System R/C Air Conditioning
- Free standing breakfast bar
- Garage automatic door with remote control
- Stainless steel appliances
- Bedroom 1, 2 & 3 sliding robes
- Allowance for completions\*
- Floor Coverings\*

**HOUSE & LAND**  
**\$443,639**

**TURN KEY**  
**\$463,489\***

The floorplan and facade image shown above are for illustration purposes only - please refer to the inclusions column and our website for the exact details of this package. The nominated design may need some modifications to suit council requirements. These packages are also still subject to regulatory approval. The Rendition Group may alter specifications, plans, prices or special offers without notice. Builders License - BLD54020. The value of the land in this package is \$290,000. RENTP 378 SA



**Steve Knaggs: Sales Consultant**  
0466 789 366 [stevek@renditiongroup.com.au](mailto:stevek@renditiongroup.com.au)

