

Home & Land

FOR SALE
FROM JUST:

\$629,000*



WEEKS
BUILDING GROUP

ARTIST IMPRESSION. TO BE USED AS A GUIDE ONLY.

LOT 110 LANGMAN GROVE, FELIXSTOW

HOME AND LAND INCLUSIONS:

- Supaloc Steel, termite proof, commercial quality
- Chrome flick mixer to kitchen & laundry
- R2.0 Soundscreen external wall insulation
- Stainless steel appliances
- Colorbond roof, gutters, fascias & downpipes
- Instantaneous gas hot water service
- NBN provision

COMPLETE HOME & LAND PACKAGE:

FROM JUST:

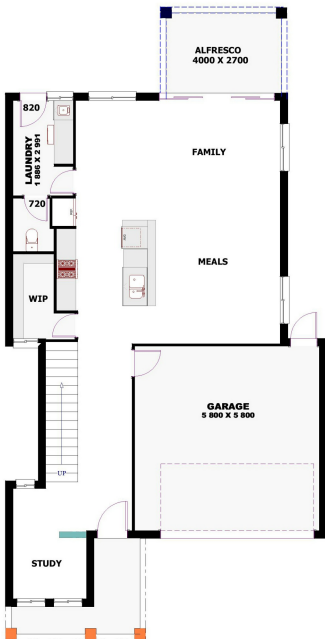
\$654,000*

WITH THE FOLLOWING ADDITIONAL INCLUSIONS:

- Concrete paths & driveway
- Carpets to bedrooms
- Timber laminate flooring
- Air-conditioning
- Robes to bedrooms
- Alfresco
- 2.7m High ceilings

For further information, contact **Mario Iadarola**

Tel: 0401 220 688 Email: mario.iadarola@weeks.com



LOT 110 LANGMAN - land size - 260M2

| | |
|-------------------|-----------------------------|
| GROUND LIVING | 96.84 m ² |
| UPPER LIVING | 90.81 m ² |
| VERANDAH | 8.34 m ² |
| ALFRESCO | 12.15 m ² |
| GARAGE | 36.77 m ² |
| TOTAL AREA | 244.91 m² |

TERMS & CONDITIONS *©2016, Weeks Building Group ACN 008 087 278. The land referred to in this promotion is not owned by us. We make no representations about the suitability of the land to build on or otherwise. You must satisfy yourself of that by inspection or by taking professional advice or otherwise. To the extent permissible by law, all liability (whether in negligence or otherwise) for the information contained in this material or any representations regarding the land is disclaimed by Weeks Building Group ACN 008 087 278 and its related entities and businesses. Price may vary depending on selections, engineering, council requirements & adjustments to allowances. The building site must be free of contaminants and not have a cross fall in any direction greater than 600mm and the finished floor level shall not exceed 300mm above the natural ground level to be determined by the engineers contour levels. The price is subject to the terms and conditions included in the HIA Building Contract for New Homes at the time a contract is made and any alteration to the design may require an adjustment to the price. For full details of T&C's please visit weeks.com.au/terms-and-conditions